



STANDARDS OF LEARNING GRADE 3-8 GROWTH COVER LETTER

Dear Parent/Guardian:

This letter outlines how to access information about your student's spring Standards of Learning (SOL) results and introduces you to the content of the attached SOL Growth "Parent Letter" from the Virginia Department of Education (VDOE).

How Are SOL Grade 3-8 Student Results Reported to Families

The following reports give families information about spring SOL tests.

- *Official SOL Score Report* - For all spring SOL reading, mathematics, and science tests, this report is posted in SIS ParentVUE and provides the overall test score, overall performance level, and results for each test reporting category.
- *"Parent Report" for SOL Growth* - For grade 3-8 reading and mathematics tests, this report shows how the vertical scaled score from your student's spring SOL test compares to the vertical scaled scores from any VGA tests they took this school year, graphing the change over time.
- *Integrated Reading and Writing (IRW) Component Details* - For grade 5 and 8 students who took the IRW component, a 1-page report with detailed results is delivered to families from your student's school.

How You Can Help Your Student's Learning

Fairfax County Public Schools (FCPS) seeks to partner with families to foster every student's learning potential. The following steps offer questions and resources for families to consider.

STEP NUMBER 1 -- Talk to your student's teachers to learn more about ways you can give support from home.

Here are some questions you may want to ask:

- Is my student on grade level in all classes?
- With what skills does my student need more support?
- How can I support these skills from home?
- Are there other classroom assessments of which I should be aware that will help me understand my student's progress?

STEP NUMBER 2 -- Access free resources available for you and your student to use at home.

Here are some suggestions:

- *Digital Resources to Support Student Learning at Home* (<https://www.fcps.edu/node/47089>)
- *SOL Grade 3-8 Results* webpage resources (<http://www.fcps.edu/node/49808>)
 - *Understanding SOL Test Results* guidance
 - *Family Resources to Support Student Learning*
 - *Questions to Ask Your Student's Teachers*
 - *Content Learning Resources*

For a translation of this document, please visit the webpage at <https://www.fcps.edu/node/49808> or contact your student's school.

لغرض الاطلاع على ترجمة هذه الوثيقة، يرجى زيارة الموقع الإلكتروني <https://www.fcps.edu/node/49808> أو الاتصال بمدرسة الطالب.

如果您需要本文件的翻译文本，请访问网页 <https://www.fcps.edu/node/49808> 或联系您的学生所在学校。

이 문서의 번역은 웹페이지, <https://www.fcps.edu/node/49808> 를 방문하거나 자녀의 학교에 문의하시기 바랍니다.

Para obtener la traducción de este documento, sírvanse ir a la página web <https://www.fcps.edu/node/49808> o contactar a la escuela de su hijo(a).

اس دستاویز کے ترجمے کے لیے، براہ مہربانی <https://www.fcps.edu/node/49808> کے ویب پیج پر تشریف لے جائیں یا اپنے بچے کے اسکول سے رابطہ کریں۔

Để có bản dịch của tài liệu này, xin vui lòng truy cập trang mạng tại <https://www.fcps.edu/node/49808> hoặc liên lạc với trường của con em quý vị.

FIRST LAST

State Testing Identifier: XXXXXXXXXX

Grade: X

School: XXXX – SCHOOL NAME

Division: XXX – DIVISION NAME

SAMPLE Parent Report



(subject icon)

TEST NAME

WINDOW

Test Date: XX/XX/XXXX



What is this report?

This report shows your child's performance on the Virginia Standards of Learning test. This report, combined with teacher input, classroom work, report cards, and the Student Detail by Question reports, gives families and teachers a more complete picture of student progress. You can use these results to help identify where your child is doing well and where additional support may be needed.

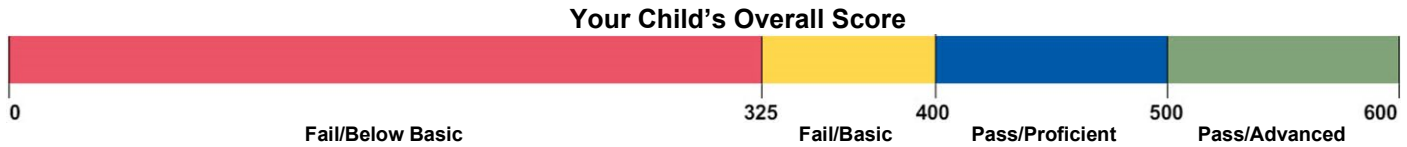
How Did Your Child Perform Overall?



What is a performance level and an overall score?

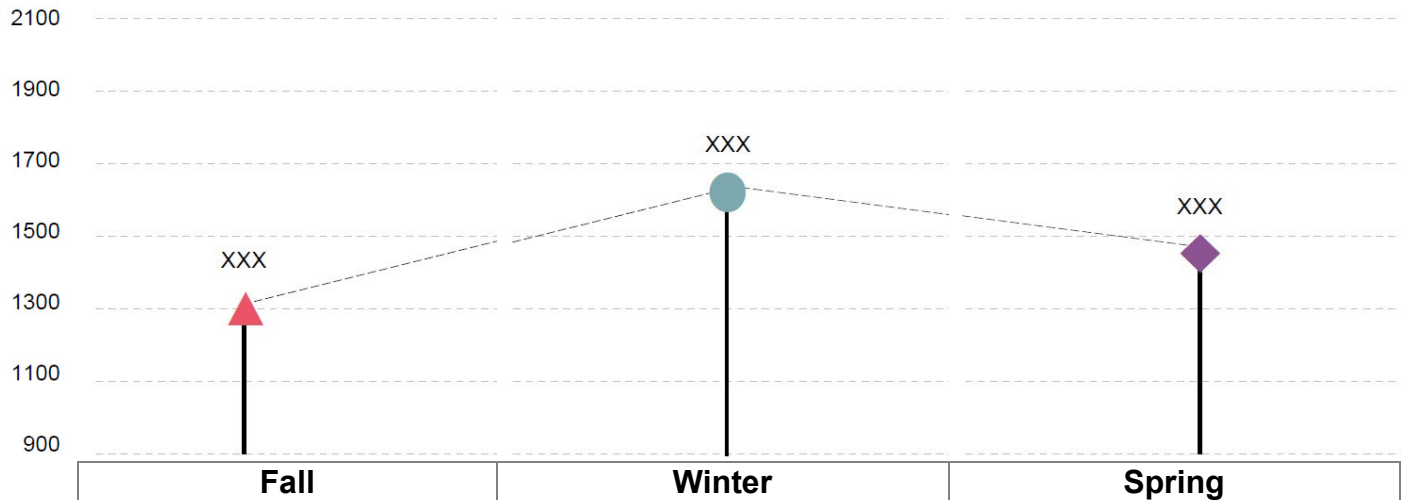
This test has performance levels to show how your child performed according to grade level expectations. The overall score shows the specific numeric score your child earned within the performance level.

Performance Level: PERFORMANCE LEVEL	What does this mean? GENERAL DESCRIPTION FOR THE PERFORMANCE LEVEL
--	--



Your child's academic progress in this school year

The chart below shows your child's score on each of the growth assessments your child took over the course of this school year. These scores can be used to understand if your child is learning the content and skills expected in the Virginia Standards of Learning. If the growth assessment score is staying the same or decreasing, it may be helpful to ask the teacher if your child needs more support in this subject area.



Based on your child's score on each Growth Assessment shown above, your child:		
needs additional support. 	is at risk. 	is generally well prepared.
(range low) - (range high)	(range low) - (range high)	(range low) and above