

PTSA MEETING | JUNE 4, 2019

FALLS CHURCH HIGH SCHOOL

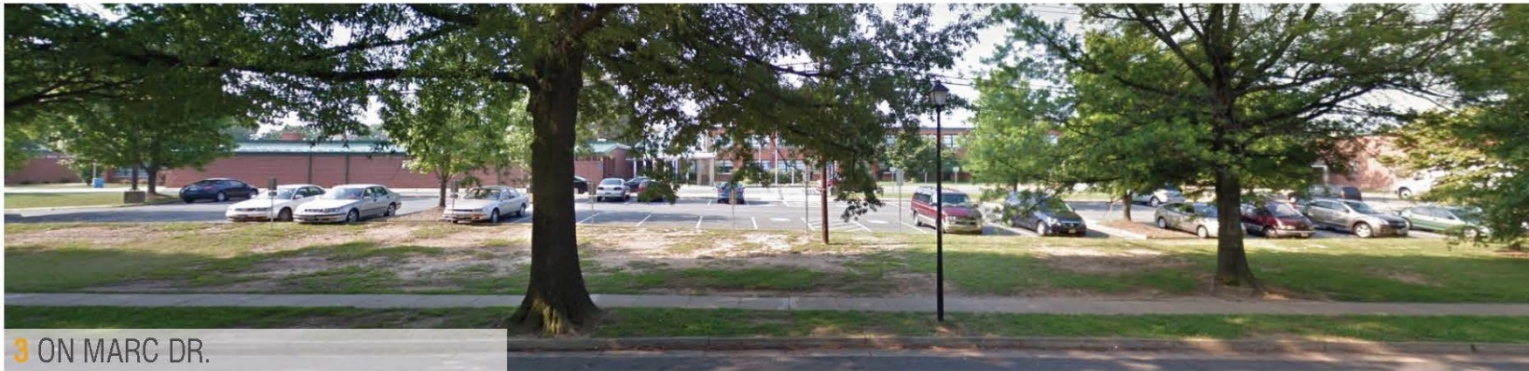


SITE CONTEXT

EXISTING NEIGHBORHOOD

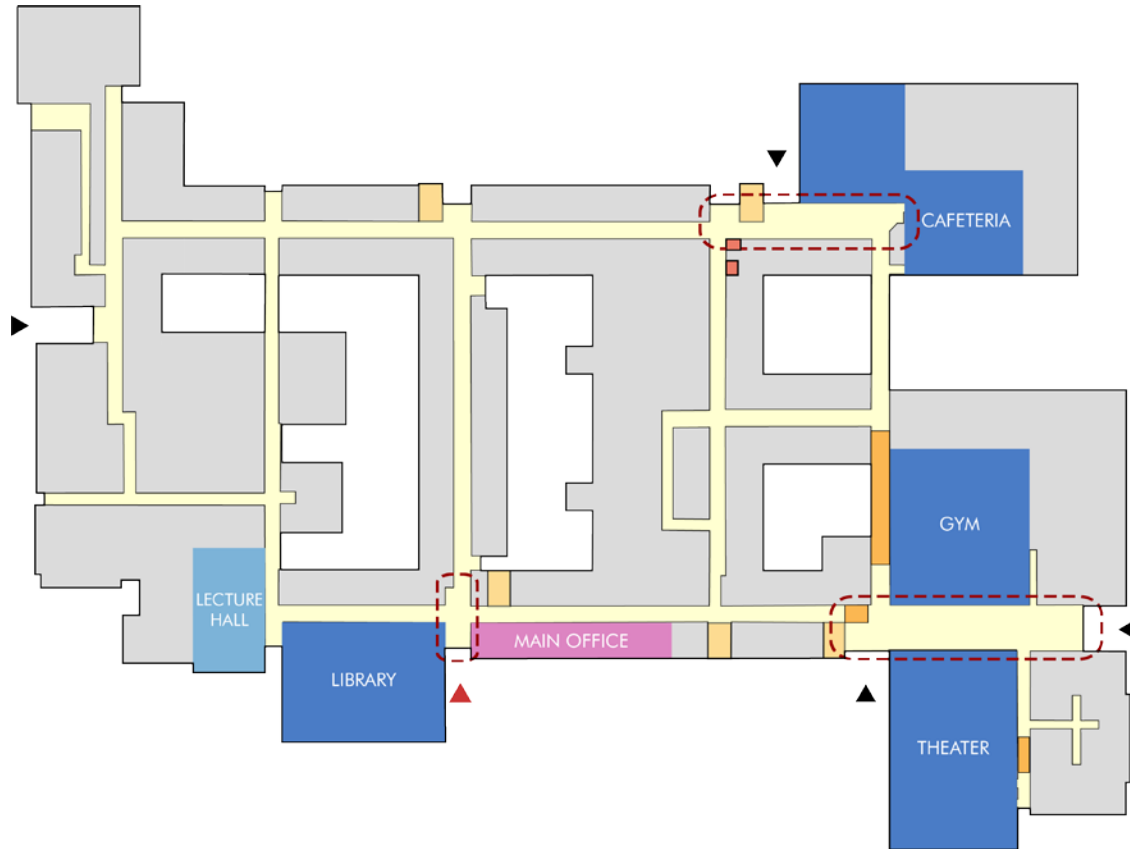


EXISTING APPROACH VIEWS

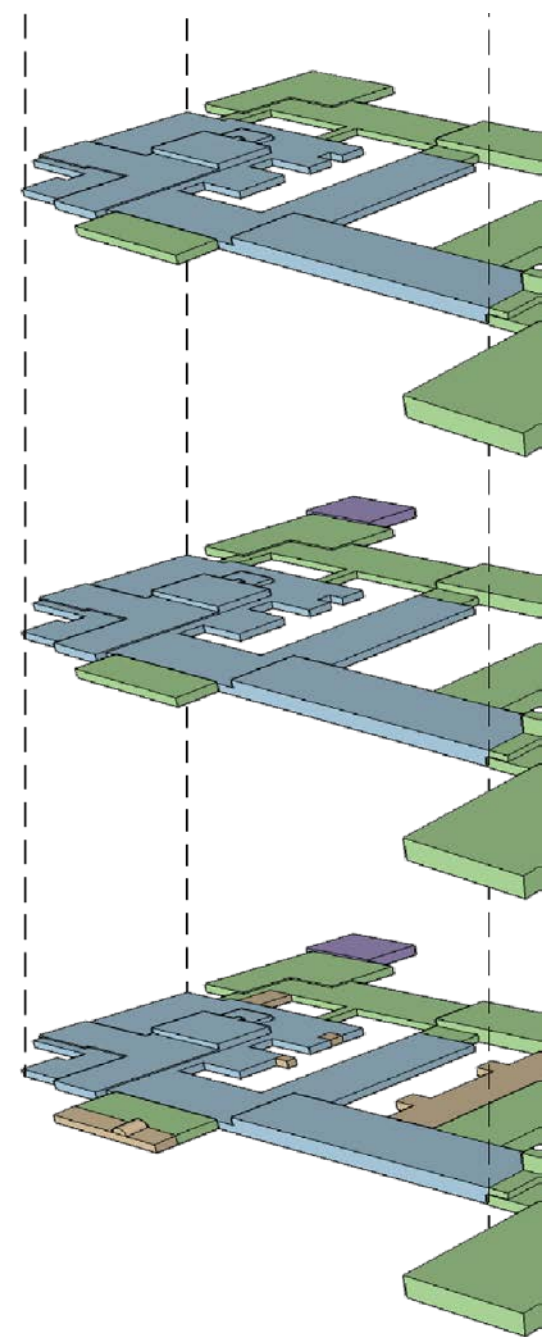


BUILDING ANALYSIS

HISTORY & ORGANIZATION



FIRST FLOOR DIAGRAM



BUILDING HISTORY

SCHOOL HISTORY

1873 - 2019



The first Falls Church (wooden structure) was built in 1733. The current brick church building dates to 1768.

The Virginia Constitution of 1869 established a statewide system of free public schools. Education was decentralized and unsystematic.



Fairfax County Public Schools was established and operated as one school system with two sets of schools defined by race. The constitution instituted a system of free education for all children in Virginia for first time.



Jefferson Institute was the first public school in Falls Church. Its location is now Donald Frady Park, 1873 -1945



In 1907 the Thomas Jefferson Institute, located in what was then the town of Falls Church, began offering free public high school courses.



The old school journal from Jefferson School was called the Jaguar Journal now called the Jagwire.



Falls Church High School in Falls Church (intersection of Cherry & Hillwood)

Jefferson School was retired and its students and faculty became Falls Church HS in a new building (original FCHS location). 1945 - 1968
The Jaguar mascot dates back to the original Jefferson School with the FCHS students electing to maintain that nickname in 1945 with the new school.



The new high school found itself located within the incorporated city of Falls Church in 1948. Fairfax County retained ownership.

John Greenleaf Whittier Middle School



FCHS 1965 Addition



FCHS exchanged buildings with John Greenleaf Whittier Intermediate school (1967 - Present)

Whittier Intermediate school (original FCHS building) was torn down

1733 1869 1870

The school year usually lasted five months and started after the harvest was finished. There were 28 schools for white students and 13 schools for African-American students, employing 44 teachers total.

1873

1907 1914 1928

High school at that time in Fairfax County was only a two-year program of studies consisting of grades 8 and 9.
It became a fully-accredited 4-year High School.
School system records began identifying Jefferson Institute by Falls Church High School and Jefferson High School.

1942 1945 1948

Fairfax County growing and more school facilities needed.
The new high school was constructed from 1942-1945.

1952

George Mason HS was built for local residents.

1960



1965 1967



1974

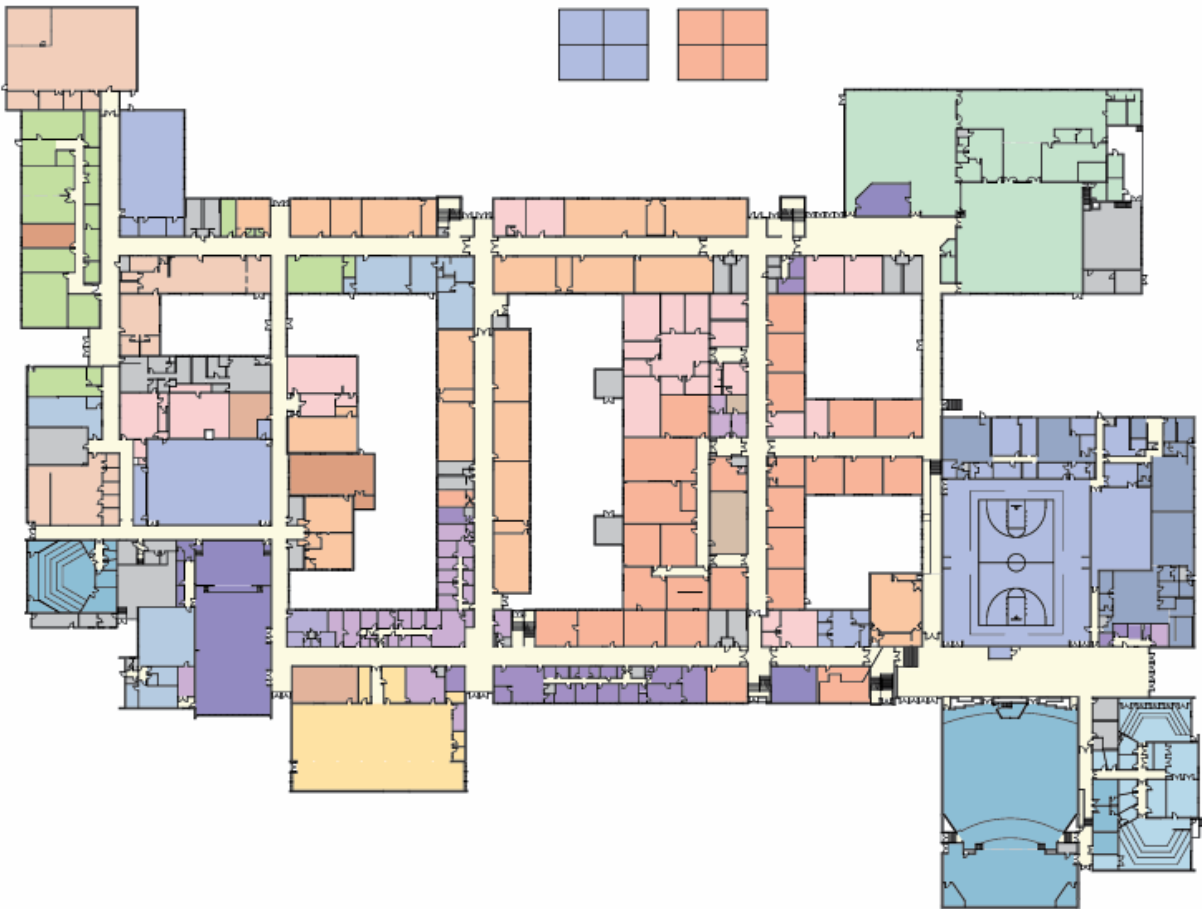


1980s

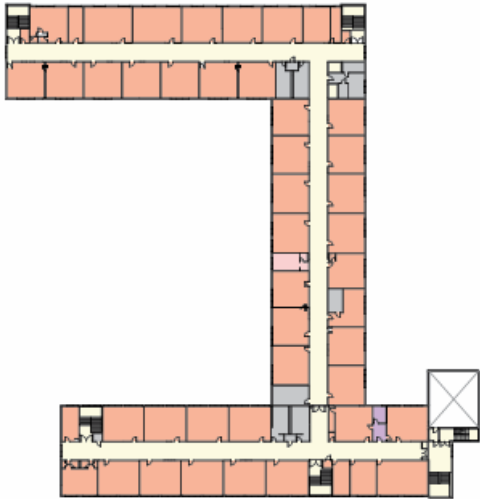
1988



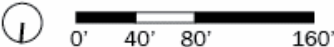
EXISTING PROGRAM ORGANIZATION



FIRST FLOOR



SECOND FLOOR



EXISTING FRONT



DESIGN PRINCIPLES

COMMUNITY AND CAMPUS



01 ASPIRATIONAL SYMBOL FOR THE COMMUNITY
Establish a **positive public presence** that demonstrates the value of education and **inspires achievement** and civic engagement.

02 MONDIALITÉ
Infuse the architecture with the diversity of **cultural heritage** that enriches this school community, but remains authentic to this place and its history.

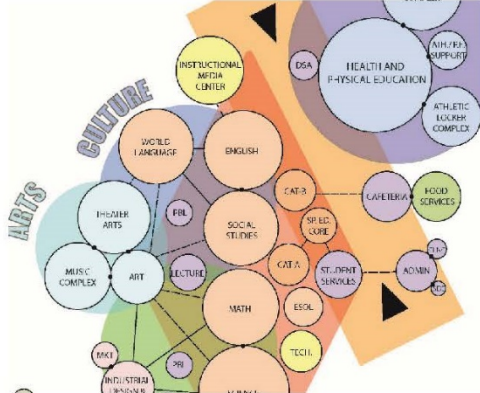
03 WELCOMING ARRIVAL EXPERIENCE
Develop a clear and welcoming arrival experience and building entry, and **provide security** through subtle, inconspicuous means.

04 SAFE SITE CIRCULATION
Organize safe and manageable circulation through the site for all modes of transportation, and **prioritize safe pedestrian connections.**

05 CONNECTION TO OUTDOOR EVENTS
Improve visitors' arrival, ticketing, and concessions for athletic events, and provide **universal accessibility** for spectators.

DESIGN PRINCIPLES

PLANNING AND PROGRAMS



06 HEART OF THE SCHOOL

Improve the legibility of the spatial relationships, hierarchy of spaces, and scale of the parts so **occupants feel connected**, not lost or disoriented.

07 PROGRAM ORGANIZATION

Identify inter-disciplinary affinities and arrange the program to **foster those relationships**.

08 ADDITIONS THAT CLARIFY

Avoid additions that sprawl, meander or create dead-ends in favor of smart, well-integrated additions the **make the building a seamless whole**.

09 USEFUL OUTDOOR SPACE

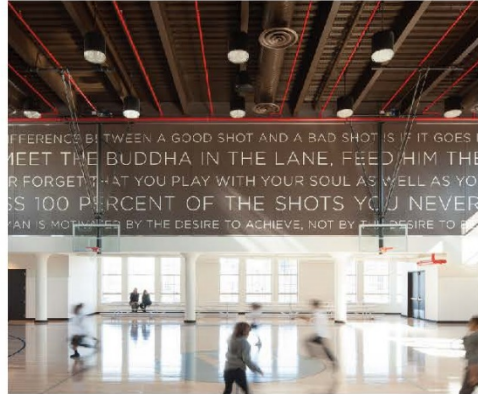
Engage courtyards and other distinct outdoor spaces as accessible, available, and **programmable campus amenities**.

10 EXTENDED LEARNING

Activate common areas outside of the classroom for **small group learning activities** and socializing.

DESIGN PRINCIPLES

PEOPLE AND PLACES



11 STUDENT OUTCOMES

Prioritize environmental conditions that support **personal wellness and cognitive health** for students of all abilities.

12 PROFESSIONAL WORKPLACE

Provide the technology, spaces and character that create a **high-quality professional workplace** and support flexible teaching philosophies.

13 ACTIVATE COMMUNITY PARTICIPATION

Expand the possibilities for **community use and engagement**, without disruption to the academic program.

14 QUALITY OF THE WHOLE ENVIRONMENT

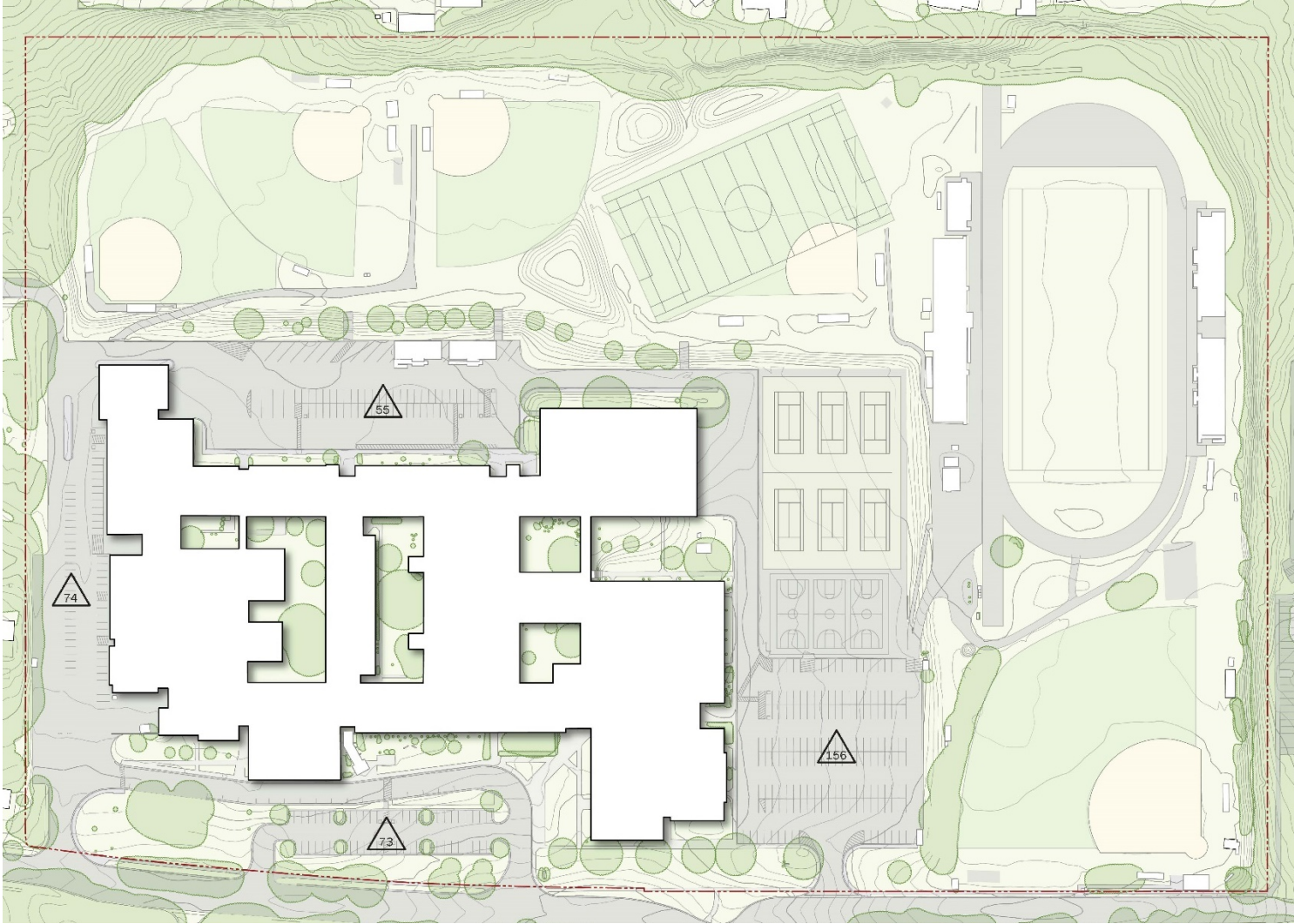
Integrate efficient and effective **environmental systems**, control acoustics, and maximize natural light to the interior and views to nature.

15 SOCIAL WELLNESS

We know the impact of social isolation on young people and should be careful to provide **places for positive interaction** at a variety of scales, and a sense of belonging.

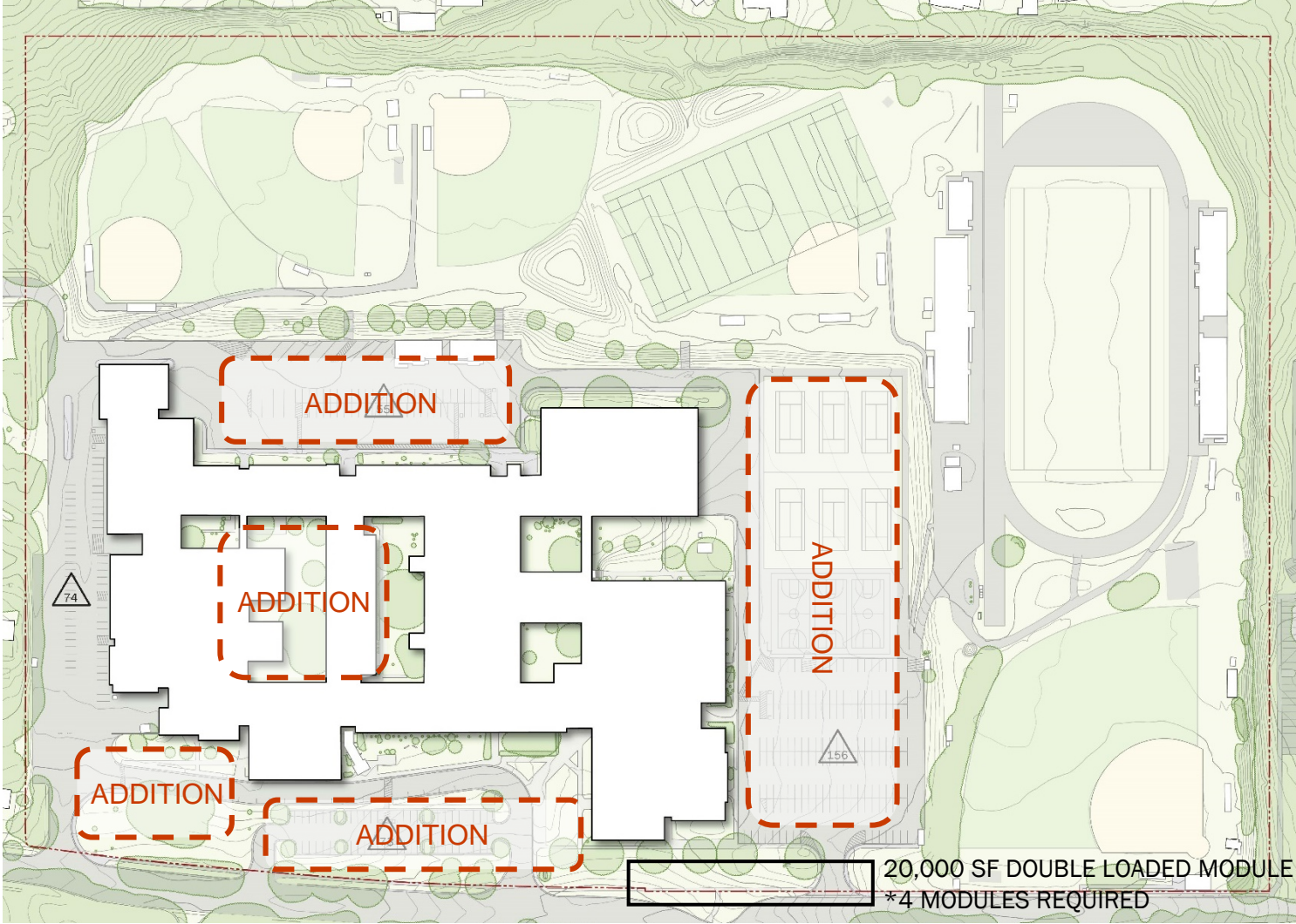
SITE PLAN

EXISTING



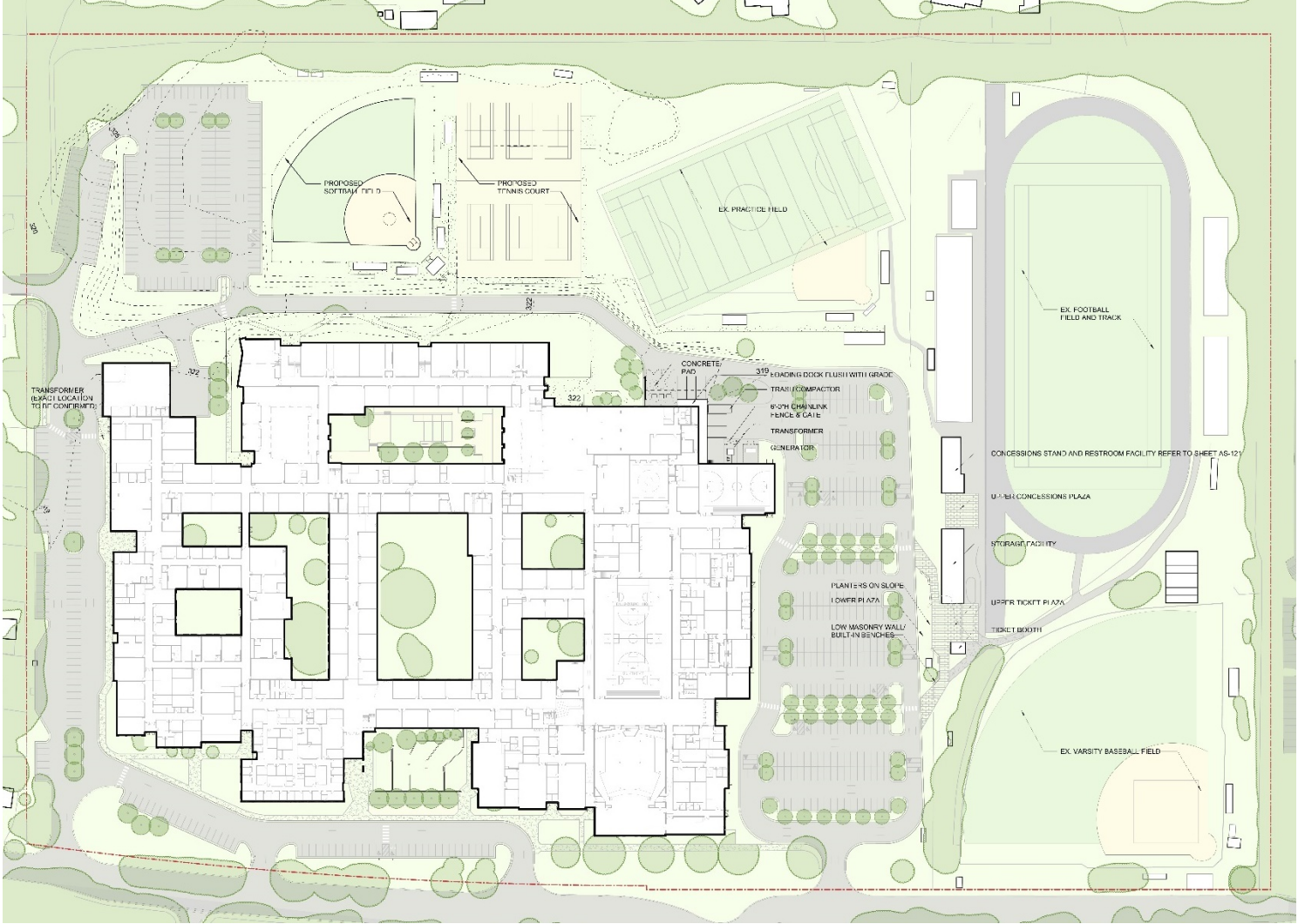
SITE PLAN

POTENTIAL LOCATIONS FOR ADDITIONS



SITE PLAN

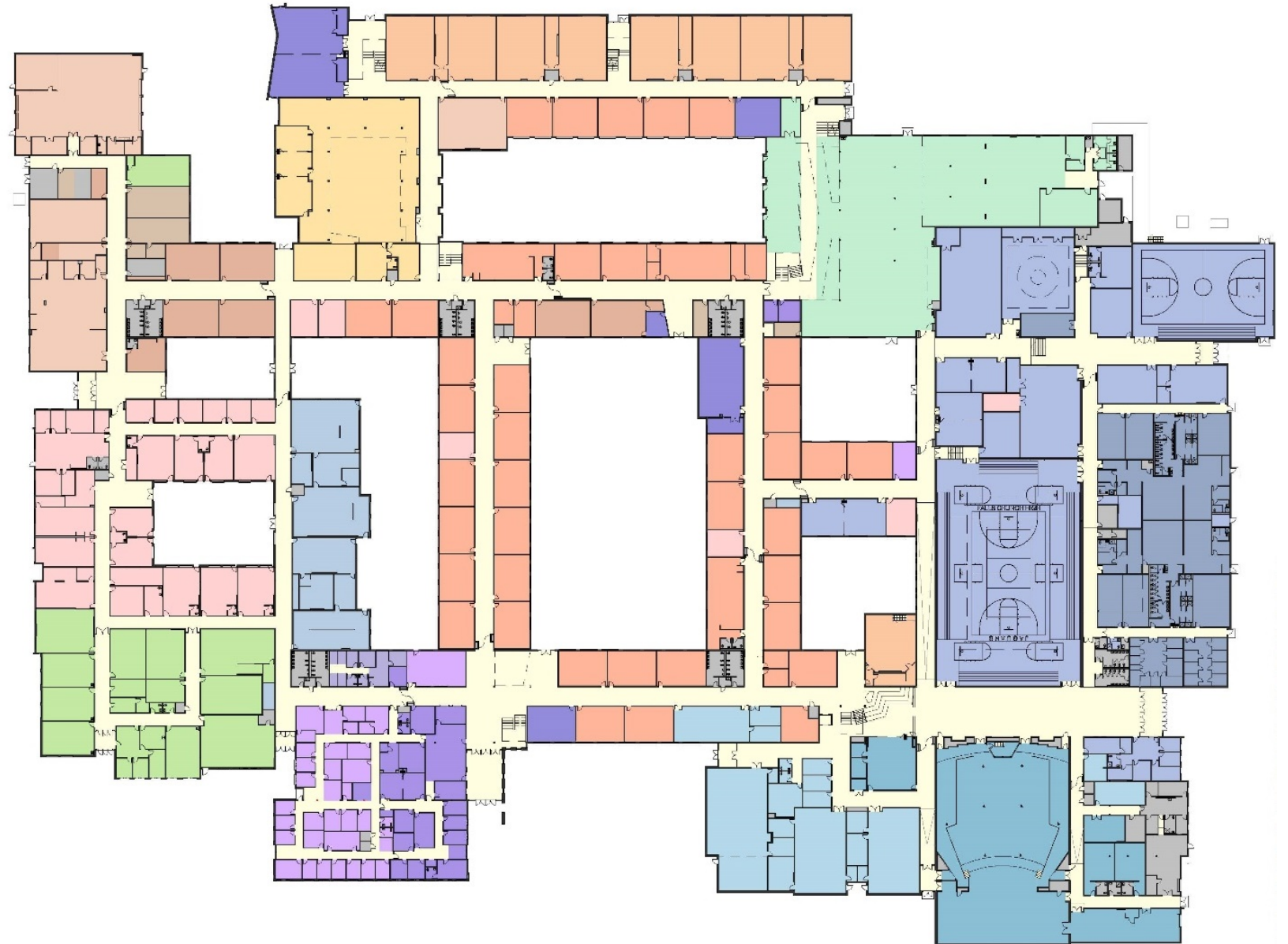
PROPOSED



FLOOR PLANS

PROPOSED – FIRST FLOOR

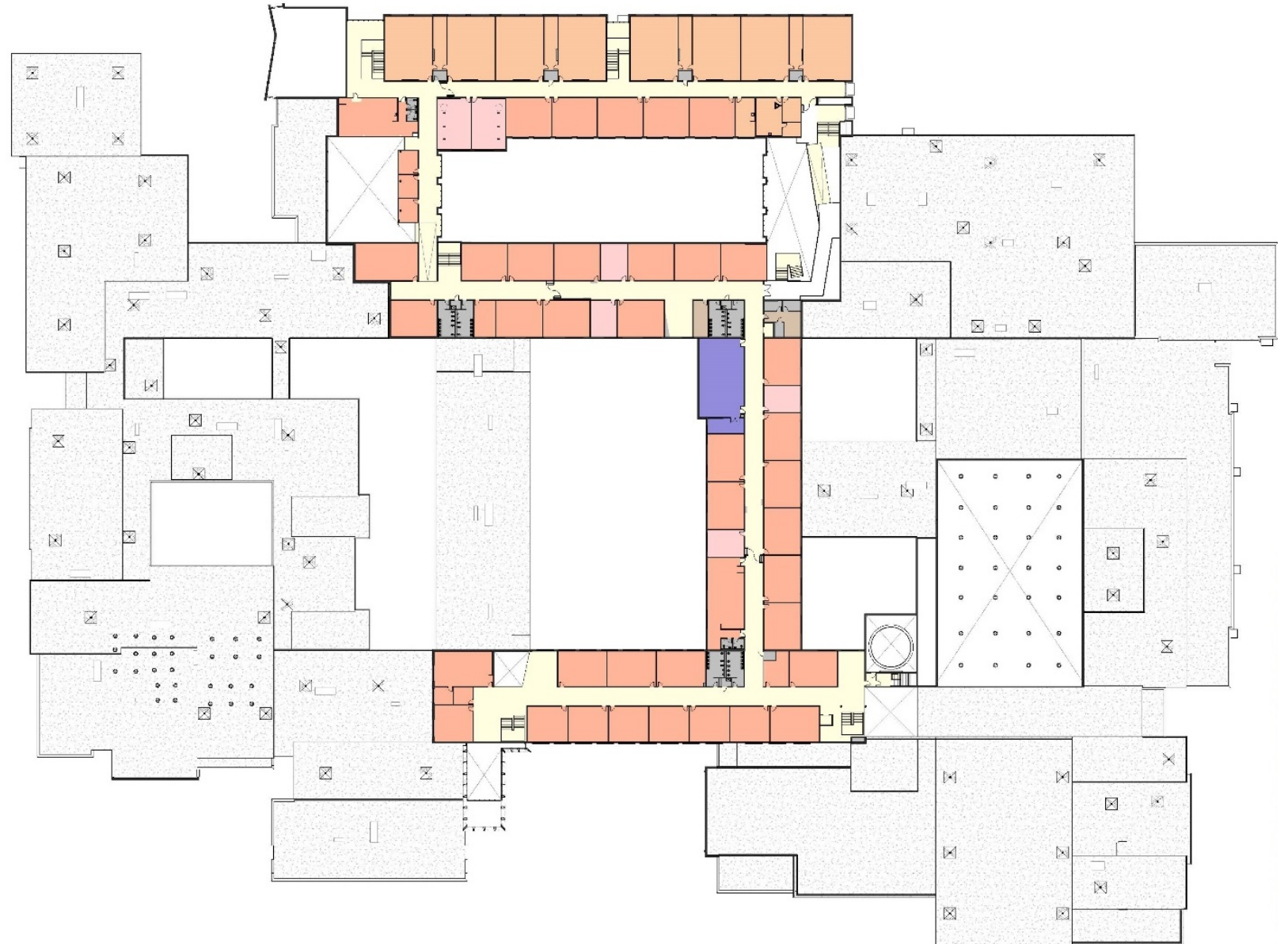
- ADMINISTRATION
- STUDENT SERVICES
- HEALTH CLINIC
- STUDENT ACTIVITIES
- FOOD SERVICES
- LIBRARY
- SCIENCE
- CORE CURRICULA
- HEALTH & PE
- PE LOCKERS
- ARTS
- MUSIC
- THEATER ARTS
- BUSINESS & MARKETING
- TECHNOLOGY & SUPPORT
- CTE
- ELECTIVES
- SPECIAL EDUCATION
- ACADEMY PROGRAMS
- BUILDING SUPPORT
- CIRCULATION



FLOOR PLANS

PROPOSED – SECOND FLOOR

- ADMINISTRATION
- STUDENT SERVICES
- HEALTH CLINIC
- STUDENT ACTIVITIES
- FOOD SERVICES
- LIBRARY
- SCIENCE
- CORE CURRICULA
- HEALTH & PE
- PE LOCKERS
- ARTS
- MUSIC
- THEATER ARTS
- BUSINESS & MARKETING
- TECHNOLOGY & SUPPORT
- CTE
- ELECTIVES
- SPECIAL EDUCATION
- ACADEMY PROGRAMS
- BUILDING SUPPORT
- CIRCULATION



FRONT ENTRY

FORECOURT



FRONT ENTRY

APPROACH



ENTRY FORECOURT ANIMATION



PTSA MEETING | JUNE 4, 2019

FALLS CHURCH HIGH SCHOOL

