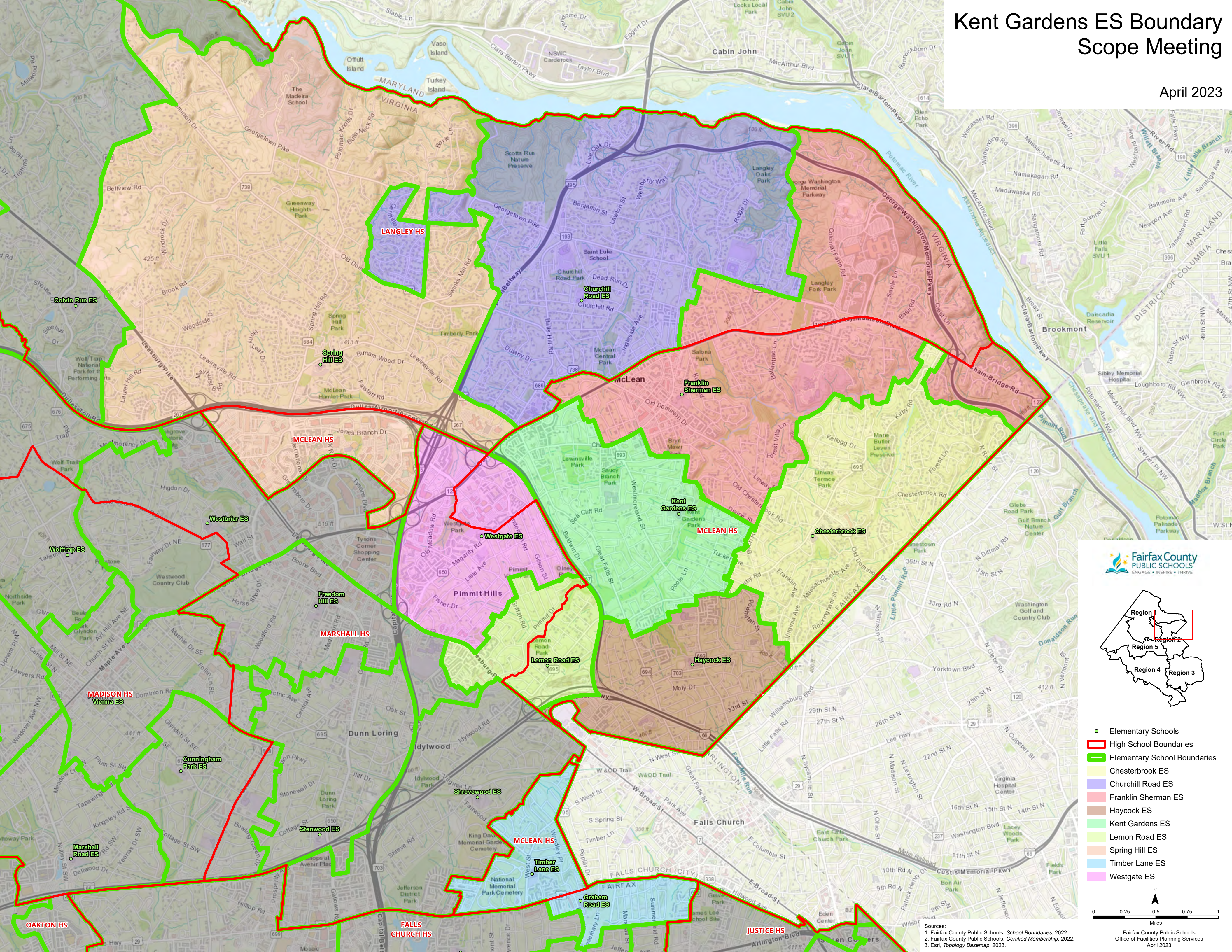


# Kent Gardens ES Boundary Scope Meeting

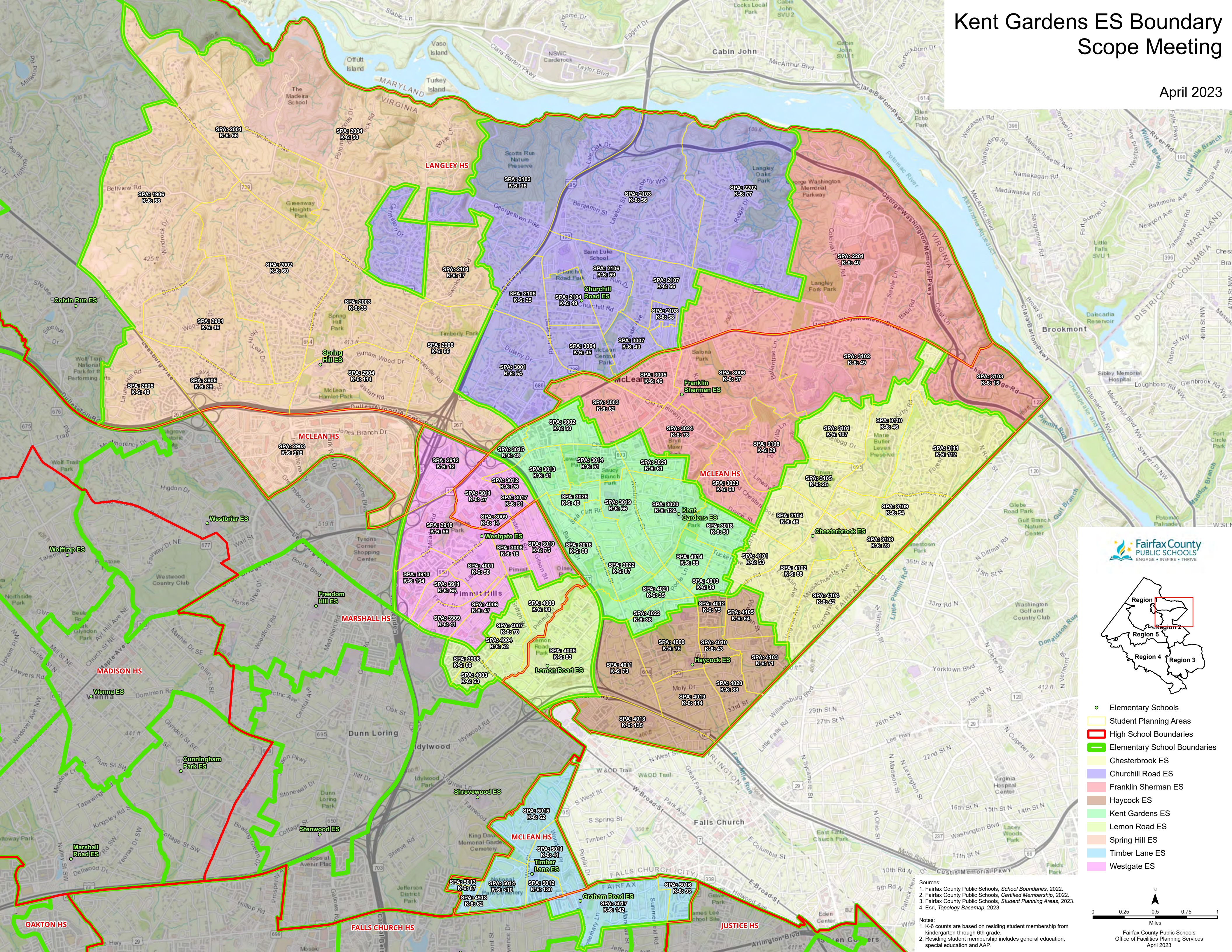
April 2023





# Kent Gardens ES Boundary Scope Meeting

April 2023



Sources:

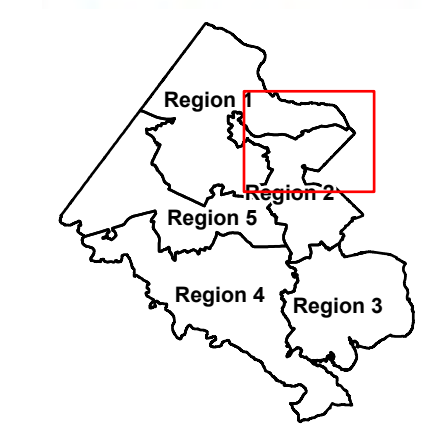
1. Fairfax County Public Schools, *School Boundaries*, 2022.
2. Fairfax County Public Schools, *Certified Membership*, 2022.
3. Fairfax County Public Schools, *Student Planning Areas*, 2023.
4. Esri, *Topology Basemap*, 2023.







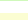






Notes:

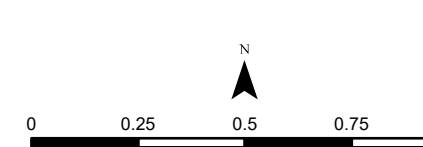
1. K-6 counts are based on residing student membership from kindergarten through 6th grade.
2. Residing student membership includes general education, special education and AAP.



Fairfax County  
PUBLIC SCHOOLS  
ENGAGE • INSPIRE • THRIVE



-  Elementary Schools
-  Student Planning Areas
-  High School Boundaries
-  Elementary School Boundaries
-  Chesterbrook ES
-  Churchill Road ES
-  Franklin Sherman ES
-  Haycock ES
-  Kent Gardens ES
-  Lemon Road ES
-  Spring Hill ES
-  Timber Lane ES
-  Westgate ES



Miles  
Fairfax County Public Schools  
Office of Facilities Planning Services  
April 2023