

# Justice High School

## Building Additions

---

Community Meeting

December 8, 2020

# Project Introduction

---

## ❖ Consultant Team

- Hughes Group Architects
- LandDesign, Inc.
- Hunton Andrews Kurth LLP

## ❖ CIP

- Planning and Design Funded in the 2017 Bond
- Construction Funded in the 2019 Bond

# Project Timeline

---

- ❖ Bid Advertisement
- ❖ Permitting Early 2021
- ❖ Construction (2 years) Fall 2021
- ❖ Completion Fall 2023

# Aerial View



# Concept Site Plan

## JUSTICE HIGH SCHOOL & PARK CONCEPT SITE EXHIBIT

September 22, 2020

- 1 EXISTING PARKING
- 2 NEW PARKING
- 3 3-STORY CLASSROOM ADDITION
- 4 1-STORY CAFETERIA EXPANSION
- 5 EXISTING BUILDING
- 6 EXISTING TENNIS COURTS
- 7 RELOCATED BASKETBALL COURT



25 0 50 100  
1" = 50'

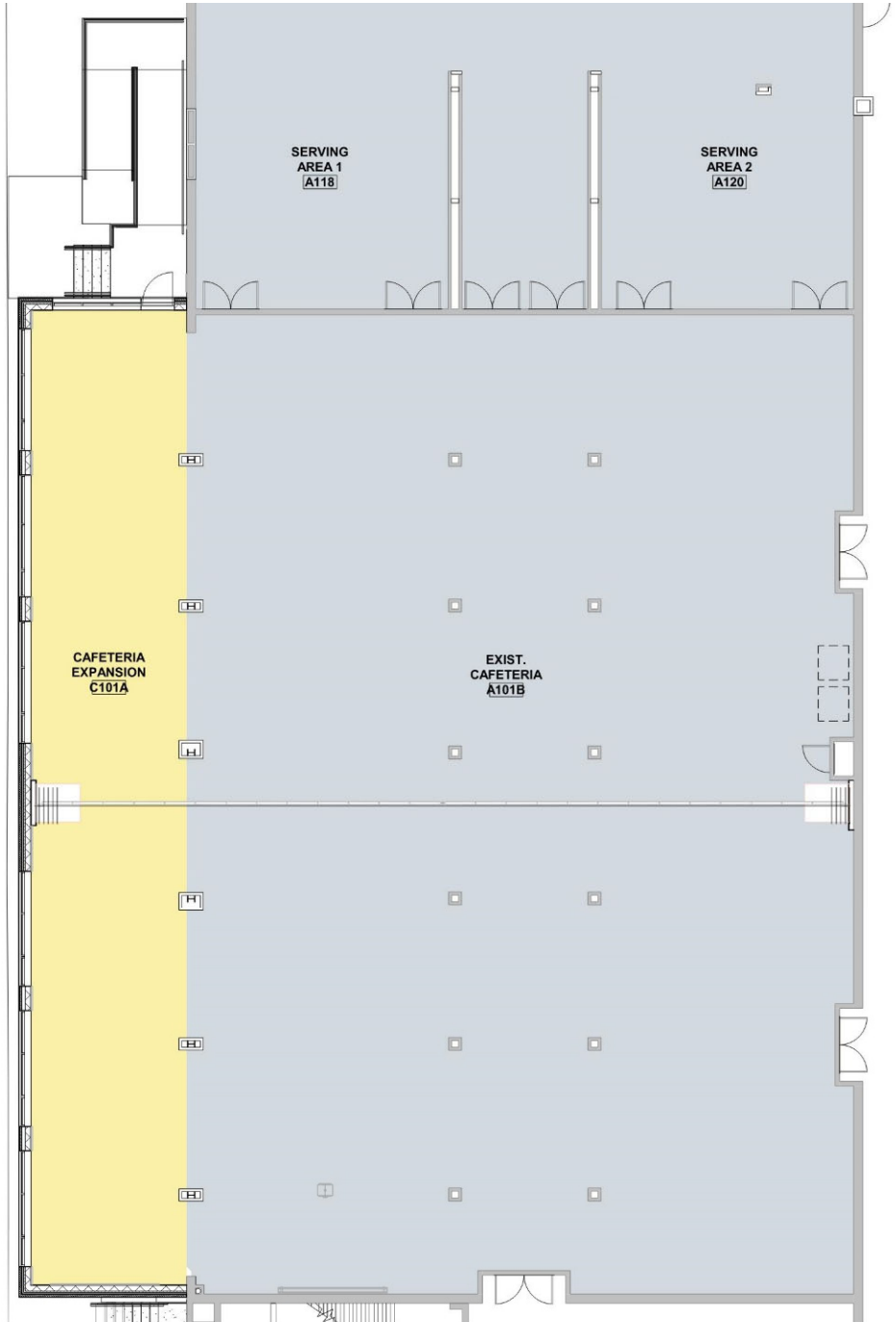
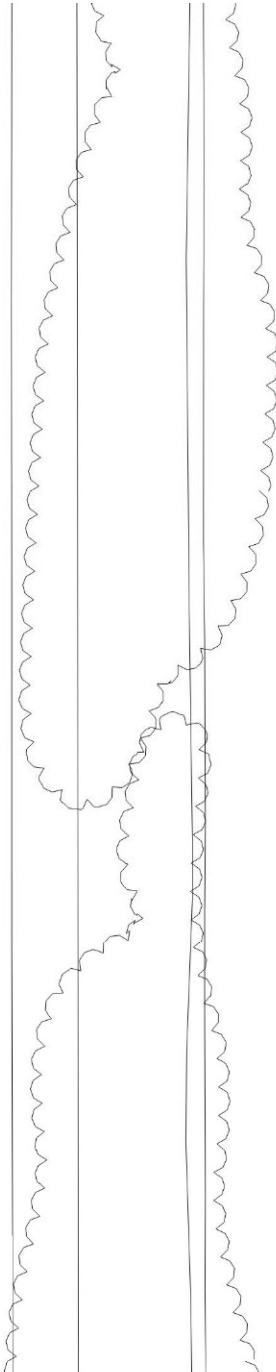


# Building Elevations – Cafeteria Expansion



West Elevation

# Cafeteria Expansion Floorplan



# Building Elevations – Classroom Addition



East Elevation



North Elevation



# Classroom Addition Floorplans



FIRST FLOOR

Department Legend

- BUILDING SUPPORT
- MATH
- BUSINESS
- PE
- CIRCULATION
- SPEC ED
- ENGLISH
- TECH & ENGINEERING
- ESOL

# Classroom Addition Floorplans



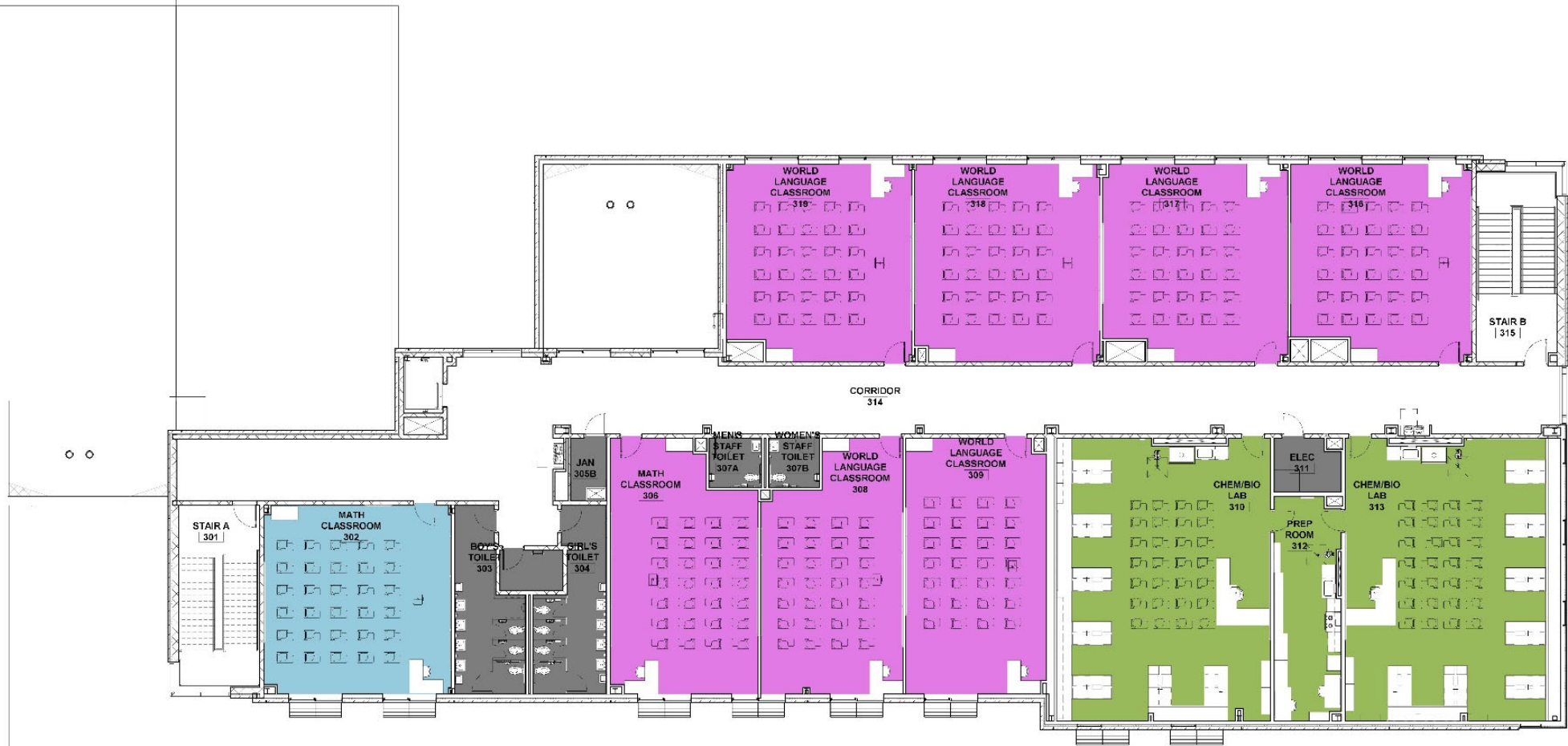
**Department Legend**

- BUILDING SUPPORT
- SOCIAL STUDIES
- CIRCULATION
- SPEC ED
- ENGLISH
- WORLD LANGUAGE
- SCIENCE



**SECOND FLOOR**

# Classroom Addition Floorplans



Department Legend

- BUILDING SUPPORT
- MATH
- SCIENCE
- WORLD LANGUAGE



THIRD FLOOR

# Rendering



An architectural rendering of a modern, multi-story building. The building features a combination of brick and white panels. The upper floors have large, multi-paned windows. The ground floor has a brick base with a few windows and a glass entrance. In front of the building, there is a paved area with a white car parked and a group of four white human figures walking. The sky is blue with scattered white clouds. The overall style is clean and professional.

**Thank You**