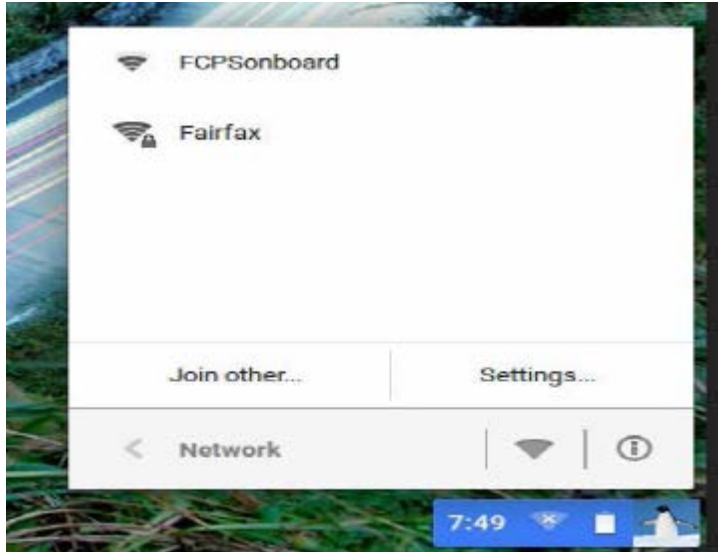


Chromebook Configuration Fairfax County Public Schools Secure Wireless

Chromebook must be logged in as user and not guest account to configure the wireless.



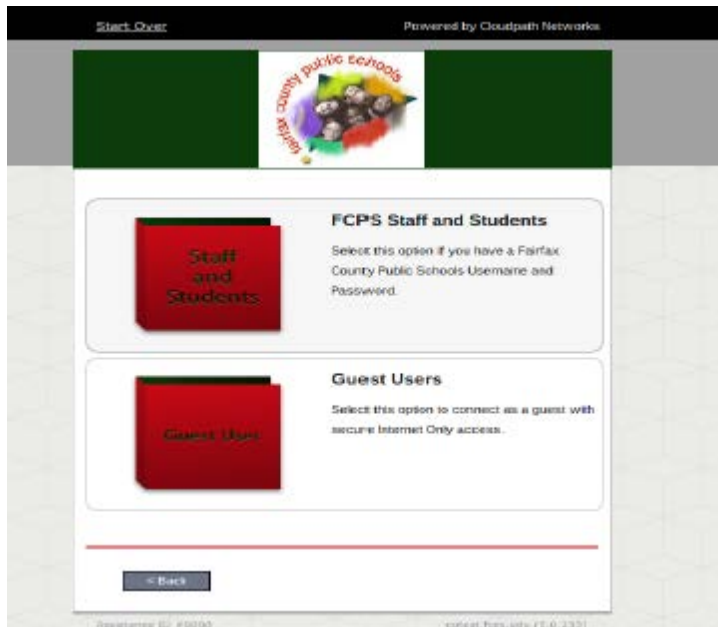
Chromebook must be logged in as user and not guest account to configure the wireless.

Once Chrome has opened, browse to a website. (Example: www.msn.com or www.cnn.com)



When you try to go to a website the system will redirect you to the onboarding configuration webpage. Check the box to agree to the Terms and Conditions and then click Start.

Select FCPS Staff and Students to use your Fairfax County Public Schools username and password for secure access on the wireless network.



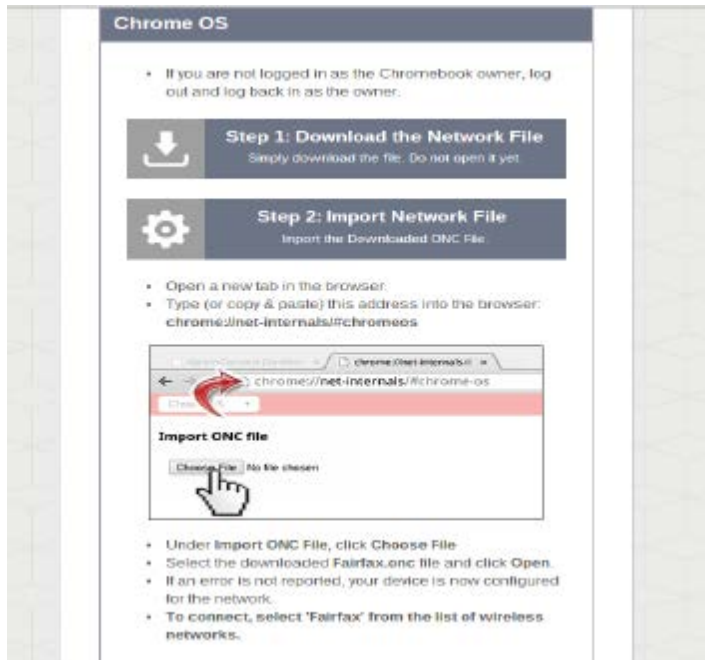
If you do not have a FCPS username, you can select Guest User and you will be configured for Internet only access to the network.

Type in your username (Note: Put your username only, system will populate the domain).



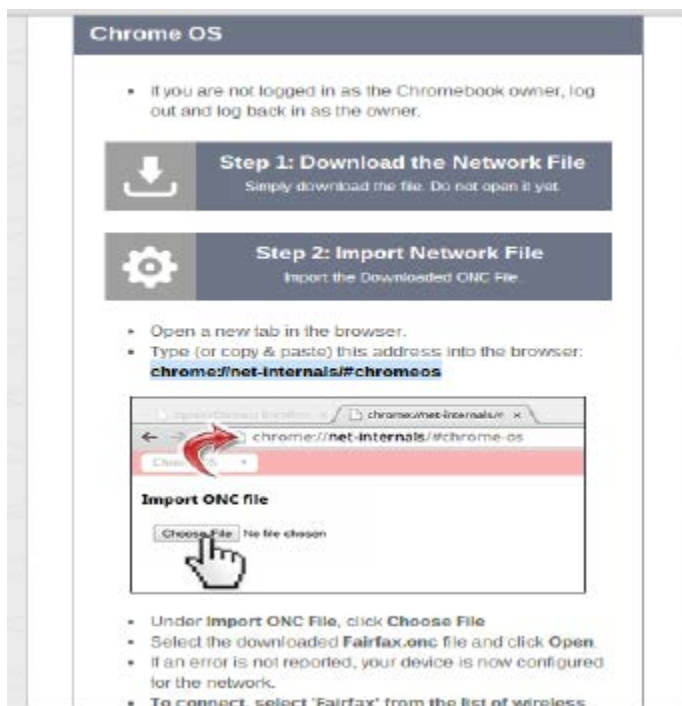
Type in your password and click Continue.

Note: Device must be logged in as user and not guest account to configure the wireless

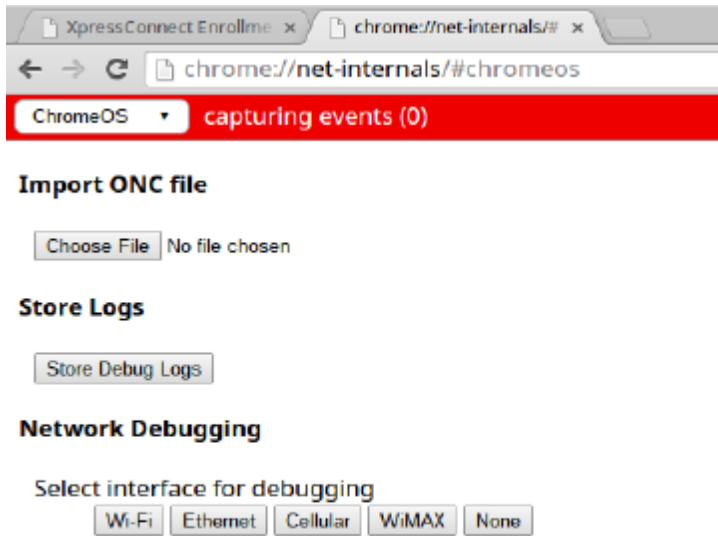


The system will display instructions to configure your device. Step 1 is to download the Network file for your device. Click on the download icon next to Step 1.

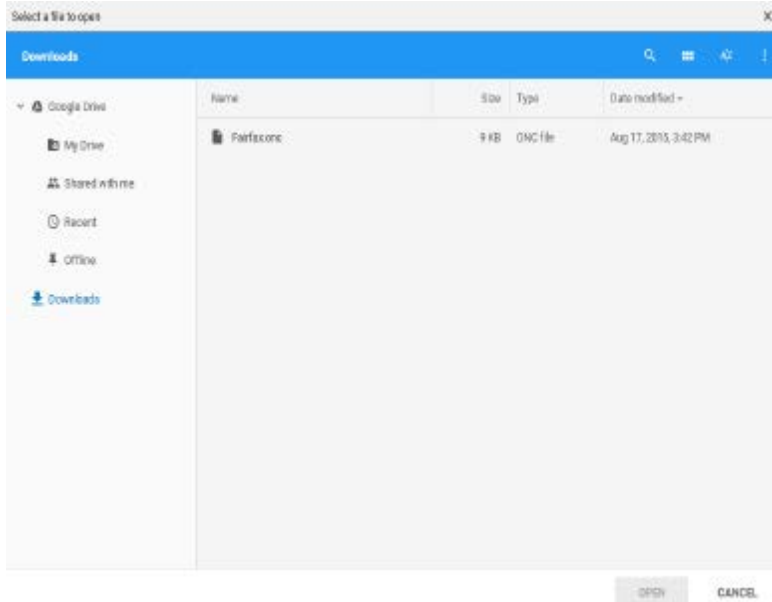
Step 2 in configuration is to open a new tab in the chrome browser and Type (or copy and paste using Ctrl-C, Ctrl-V) the address highlighted in screenshot to the left.



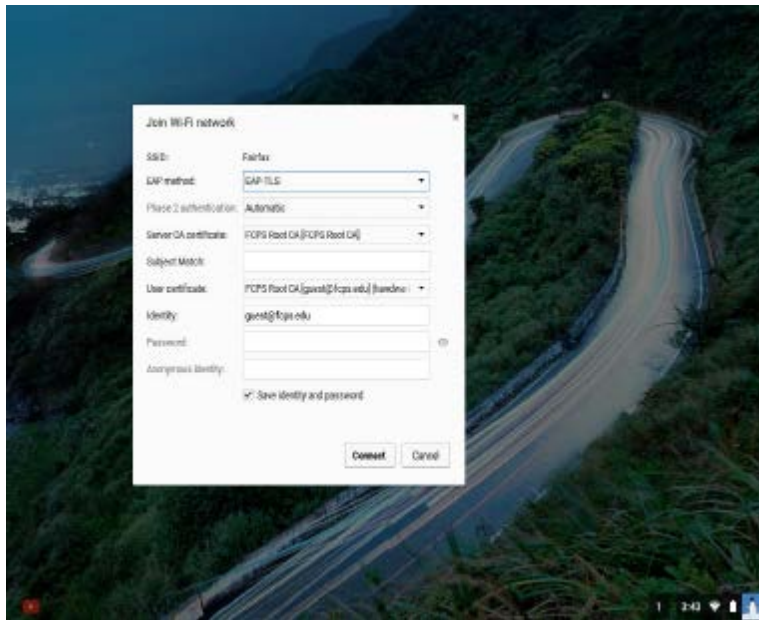
When address opens the screen on left will appear. Under Import ONC file click Choose File.



A Window will open to select a file to open. Click on file that was downloaded named Fairfax.onc and open. If no error is reported the device has been configured.



Go to the wireless icon in lower right corner and select network “Fairfax”. A box similar to display on the left will appear showing the certificates and identity for the configuration. (Guest enrollment in this case)



Click Connect at the bottom of window and network should connect to “Fairfax” network after 10-15 seconds.