

Types of Masks

There are many types of masks you can use to protect yourself and others from getting and spreading COVID-19. When choosing a mask, choose one that fits snugly. Learn more about how to choose a mask that fits well and offers the best protection.

Cloth Masks

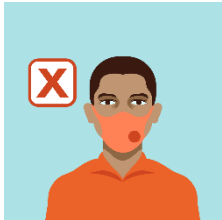
Cloth Masks can be made from a variety of fabrics, and many types of cloth masks are available.



Do wear

Multiple layers of tightly woven, breathable fabric

Cloth masks that fit properly (snugly around the nose and chin with no large gaps around the sides of the face)



Do NOT wear

Masks with exhalation valves or vents

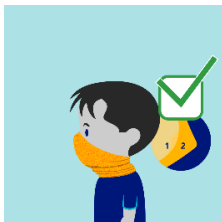


Ways to have better fit and extra protection

Wear two masks (disposable mask underneath AND cloth mask on top)

Combine a cloth mask with a fitter or brace

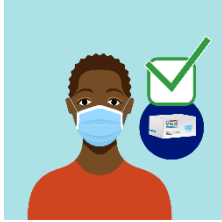
Nose wire



Wear a gaiter with two layers or fold it to make two layers.

Disposable Masks

Disposable face masks are widely available.



Do wear

A description indicating multiple layers of non-woven material

Disposable masks that fit properly (snugly around the nose and chin with no large gaps around the sides of the face)



Do NOT wear

Masks with gaps around the sides of the face or nose

If wet or dirty



3 Ways to have better fit and extra protection

Wear two masks (disposable mask underneath AND cloth mask on top)

Combine a cloth mask with a fitter or brace

Nose wire

KN95 Masks

KN95 masks are a type of filtering facepiece respirator that are commonly made in China and similar to N95 masks commonly used in the United States.



Do wear

KN95 masks that meet requirements similar to those set by CDC's National Institute for Occupational Safety and Health (NIOSH) for respirators



Do NOT wear

If you have certain types of facial hair

Counterfeit (fake) KN95 masks

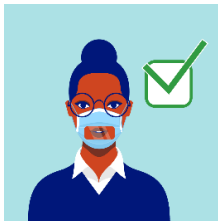
If hard to breathe

With other masks; wear KN95 alone only

BE AWARE: About 60% KN95 masks in the United States are counterfeit (fake) and DO NOT meet NIOSH requirements.

Clear Masks or Cloth Masks with a Clear Plastic Panel

Clear masks or cloth masks with a clear plastic panel are an alternative type of mask.



Do wear

Cloth masks that fit properly (snugly around the nose and chin with no large gaps around the sides of the face)