

JUSTICE HIGH SCHOOL & JUSTICE PARK PUBLIC PRESENTATION - PTA



MARCH 1, 2021

Team Introduction

- FCPS Design and Construction
 - Godson Nwosu – Coordinator III, Capital Projects
 - Holli McKinley – Architectural Engineer II
 - Andrew Peterson – Civil Engineer II
- Consultant Team
 - Hughes Group Architects – Architect of Record
 - LandDesign – Civil Engineer
 - Ehlert Bryan – Structural Engineer
 - Strickler Associates – Mechanical, Electrical, Plumbing Engineer

Project Scope

- Cafeteria expansion
- 3-story addition to an existing school
 - The spaces of the addition includes core classrooms, science labs, modeling and tech lab spaces, and special education spaces.
- Justice Park

Project Timeline

- ❖ Bid Opening Fall 2021
- ❖ Construction Start Fall 2021
- ❖ Completion of Project Summer 2023

Site Plan

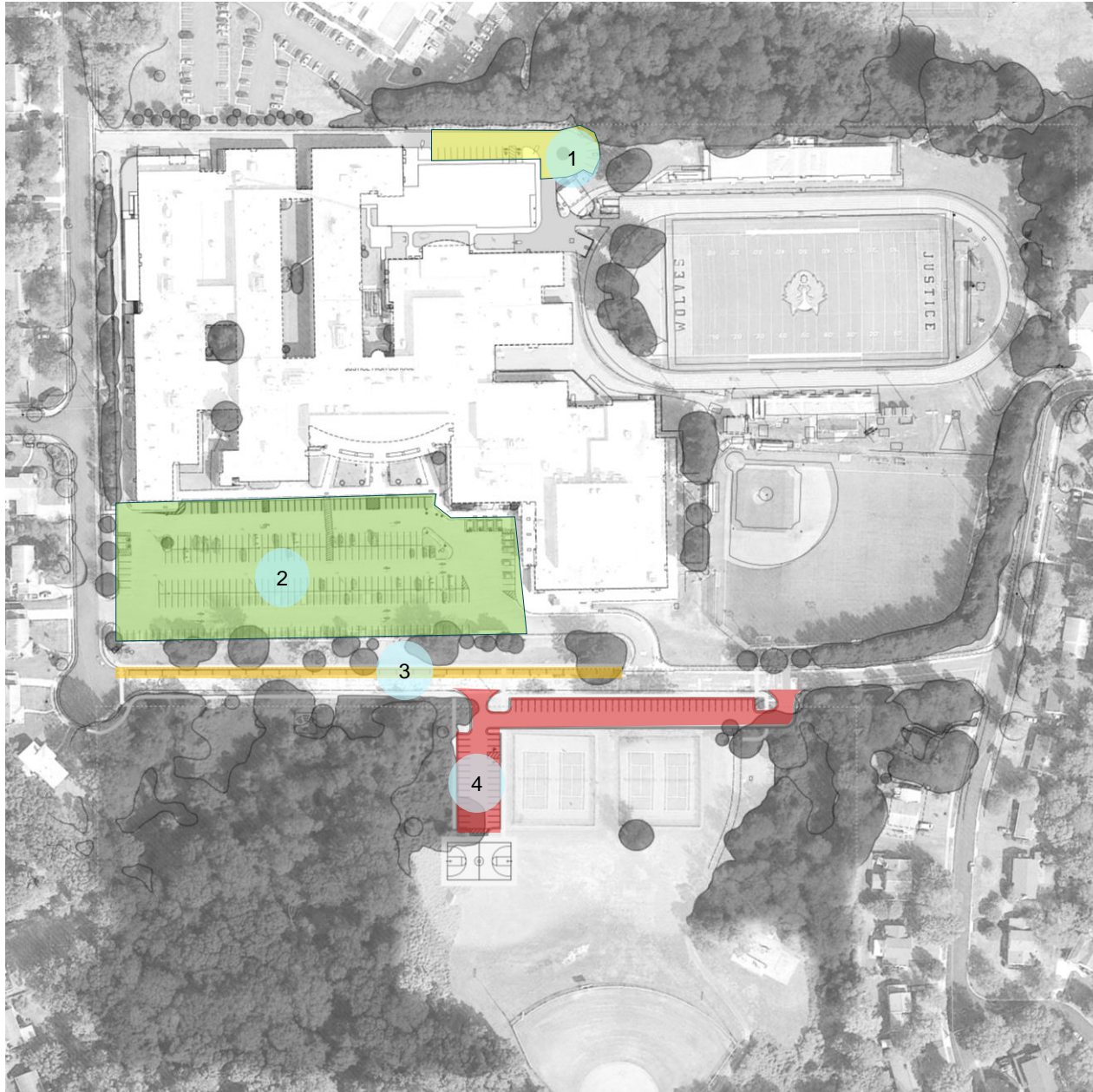


1. EXISTING PARKING
2. NEW PARKING
3. 1-STORY CAFETERIA EXPANSION (1,818 GSF)
4. 3-STORY CLASSROOM ADDITION (43,431 GSF)
5. EXISTING BUILDING (293,401 GSF)
6. EXISTING TENNIS COURTS
7. RELOCATION OF EXISTING BASKETBALL COURT (NEW)



25 0 50 100
1" = 50'

Parking Layout



PARKING ANALYSIS

TOTAL **EXISTING** PARKING SPACES: 329

SPACES LOST DUE TO ADDITION: 81

TOTAL PARKING TO REMAIN: 248

- 1 CLASSROOM ADDITION PARKING: 18
- 2 SCHOOL'S MAIN PARKING: 281
- 3 PARKING ALONG PEACE VALLEY LN: 28
- 4 JUSTICE PARK PARKING: 67

TOTAL **PROPOSED** PARKING SPACES: 394

NET GAIN: 65 ADDITIONAL SPACES



25 0 50 100
1" = 50'

Justice Park Plan



JUSTICE PARK INFORMATION

- 1 TOTAL ACREAGE JUSTICE PARK:
+/- 17 ACRES
- 2 LAND DISTURBANCE AT NEW PARKING
+/- 2.1 ACRES
- 3 IMPACT ON EXISTING RPA: **NONE**



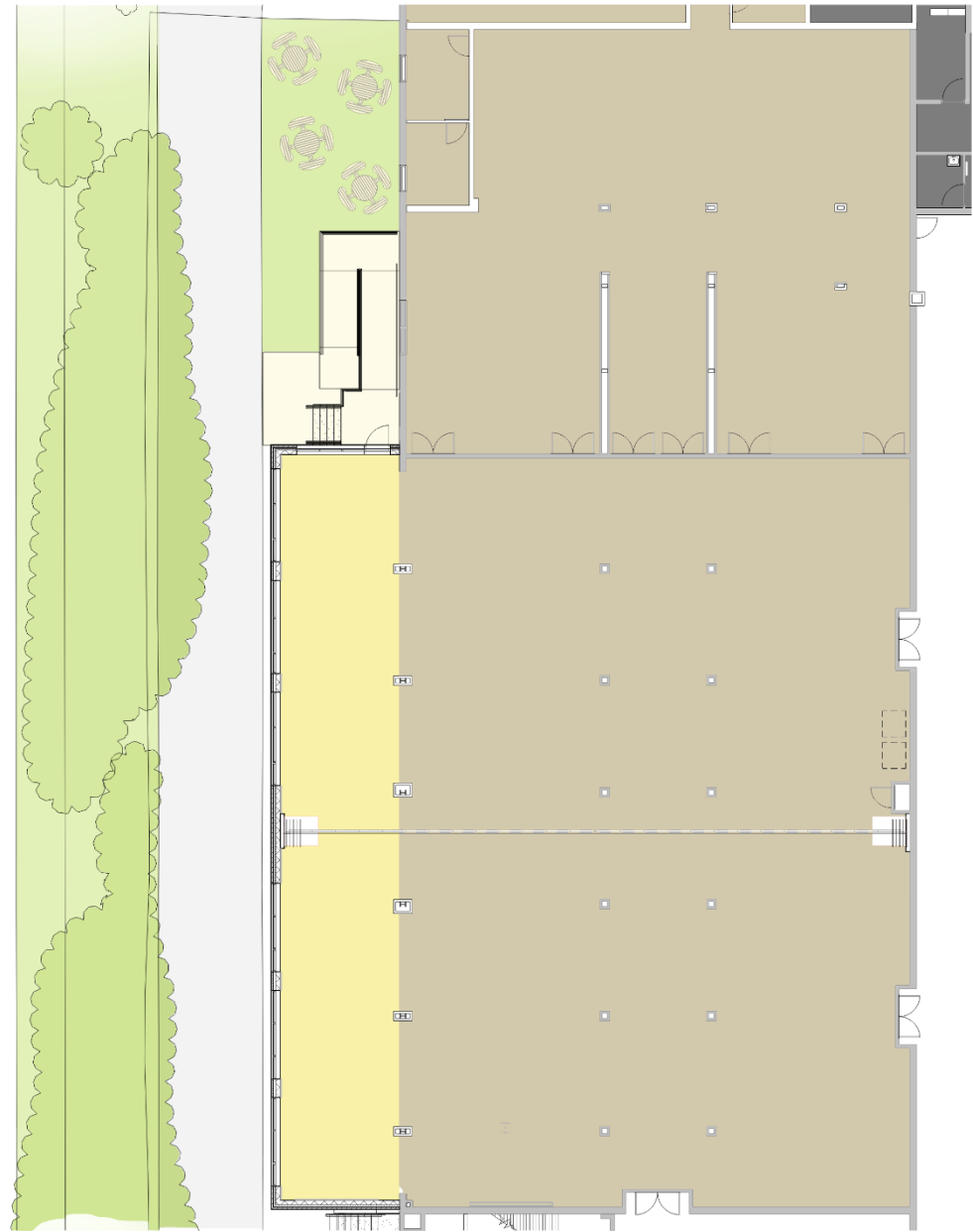
25 0 50 100
1" = 50'

Cafeteria Plan

EXISTING CAFETERIA 7,703 GSF

CAFETERIA EXPANSION 1,818 GSF

TOTAL CAFETERIA 9,521 GSF



Cafeteria Elevation



West Elevation

First Floor Plan



Second Floor Plan



Third Floor Plan



Department Legend

- BUILDING SUPPORT
- MATH
- SCIENCE
- WORLD LANGUAGE



Elevations

Materials

- Brick
- Metal Panels
- Glass



East Elevation



North Elevation

Rendering



QUESTIONS?



Fairfax County
PUBLIC SCHOOLS
ENGAGE • INSPIRE • THRIVE

www.fcps.edu

Thank you!