

# LEES CORNER ELEMENTARY SCHOOL

## FAIRFAX COUNTY PLANNING COMMISSION



**OCTOBER 4, 2023**

## Project Timeline

---

- ❖ CIP – Planning and Design Funded
  - ❖ 2021 School Bond – Planning/Design
  - ❖ Unfunded - Construction
  
- ❖ Permitting 2023 – 2024
  
- ❖ Construction (2 years) Spring 2024
  
- ❖ Final Completion Summer 2026



# Existing Aerial View



LEES CORNER RD

Lees Corner  
Elementary School

Fox Valley  
Park

HOLLINGER AVE



# Existing Site Plan

PARKING SPACES: 90

BUSES: 10

SITE AREA: 13.902 AC

ZONING: PDH-3

EXISTING BUILDING  
AREA: 84,664 SF



# Proposed Site Plan

PARKING SPACES: 102

BUSES: 10

SITE AREA: 13.902 AC

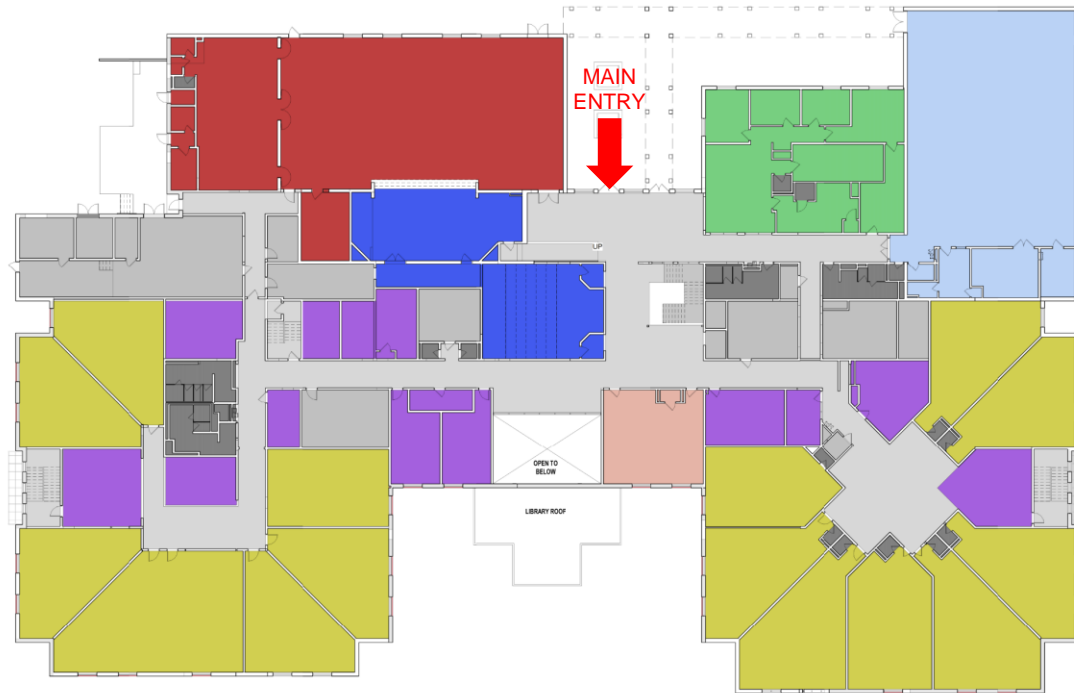
ZONING: PDH-3

PROPOSED ADDITION  
AREA: 29,399 SF

PROPOSED OVERALL  
BUILDING AREA:  
114,063 SF

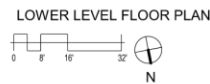


# Existing Floor Plan Upper Floor



## LEGEND

- Administration
- Athletics
- Circulation
- Fine Arts
- Food Services
- General Learning Areas
- Health Services
- Media Center
- Music
- School Aged Child Care
- Special Education
- Support / MEP / Storage
- Toilets

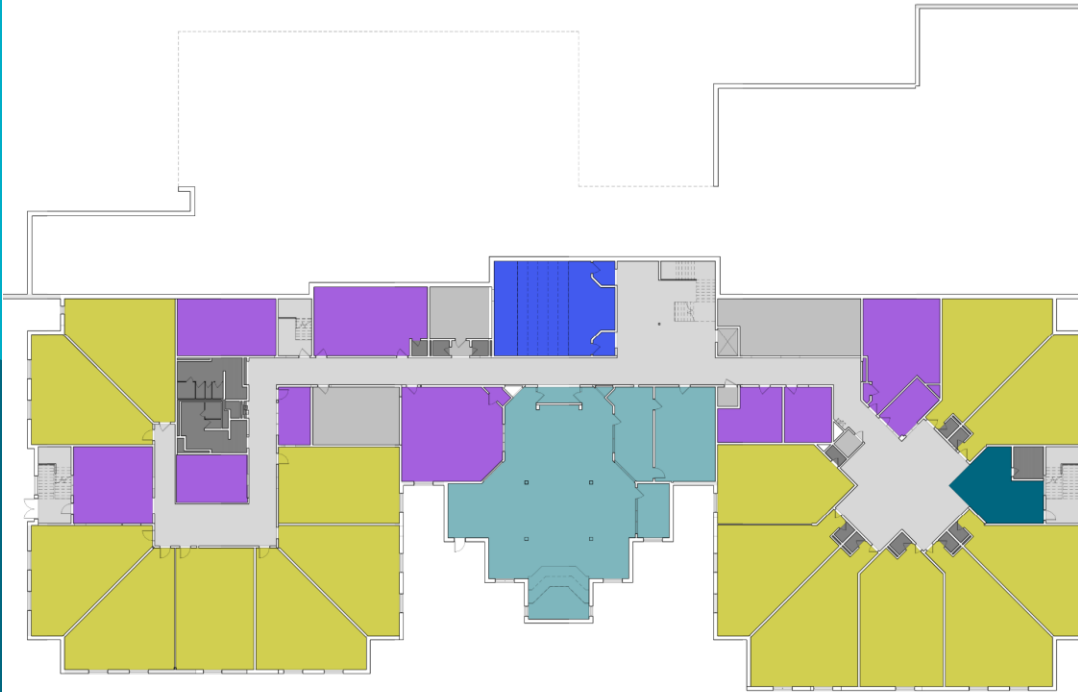




# Existing Floor Plan Lower Floor

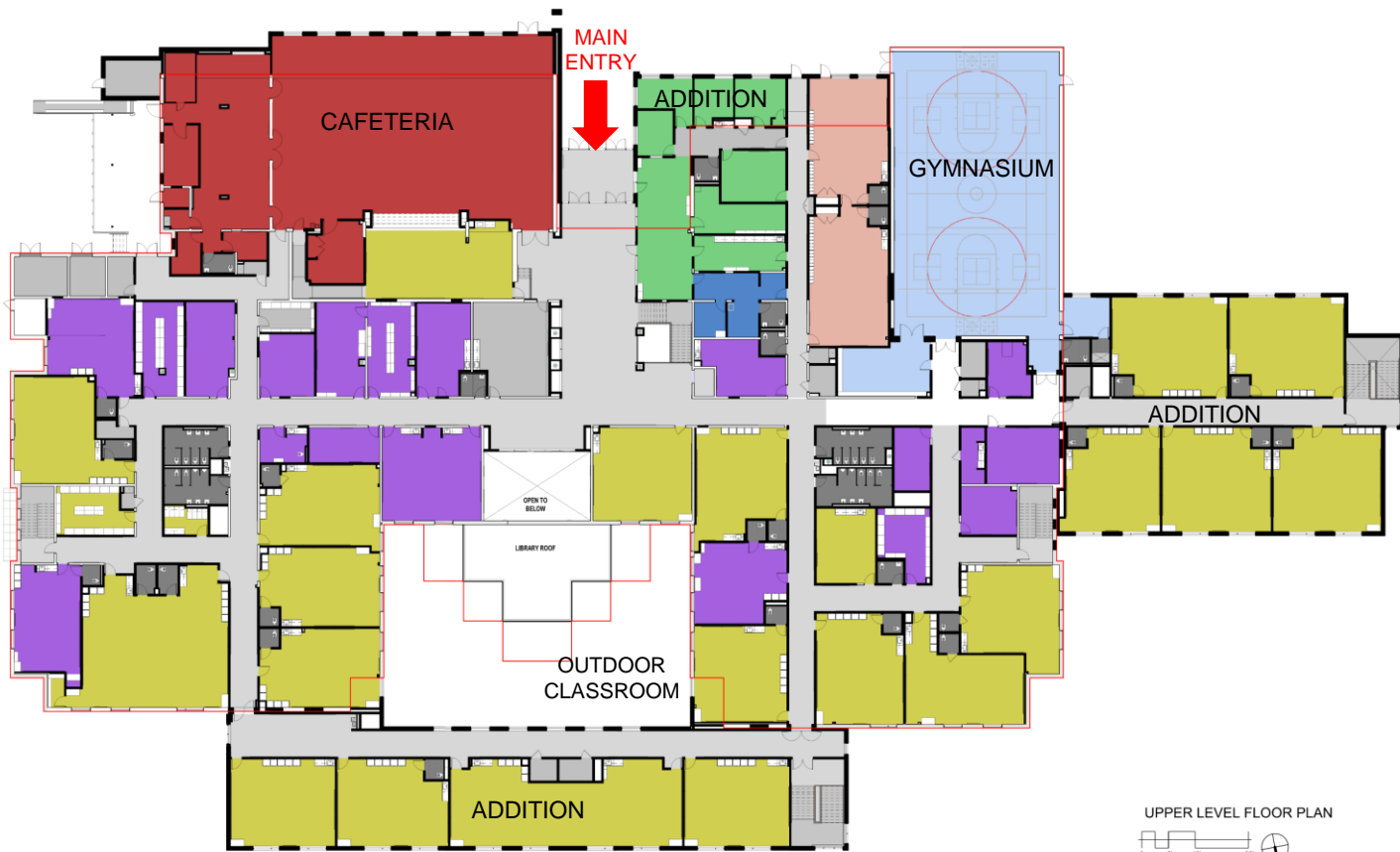
## LEGEND

- Administration
- Athletics
- Circulation
- Fine Arts
- Food Services
- General Learning Areas
- Health Services
- Media Center
- Music
- School Aged Child Care
- Special Education
- Support / MEP / Storage
- Toilets



LOWER LEVEL FLOOR PLAN  
0 8 16 32' N

# Proposed Floor Plan Upper Floor



## LEGEND

- Administration
- Athletics
- Circulation
- Fine Arts
- Food Services
- General Learning Areas
- Health Services
- Media Center
- Music
- School Aged Child Care
- Special Education
- Support / MEP / Storage
- Toilets

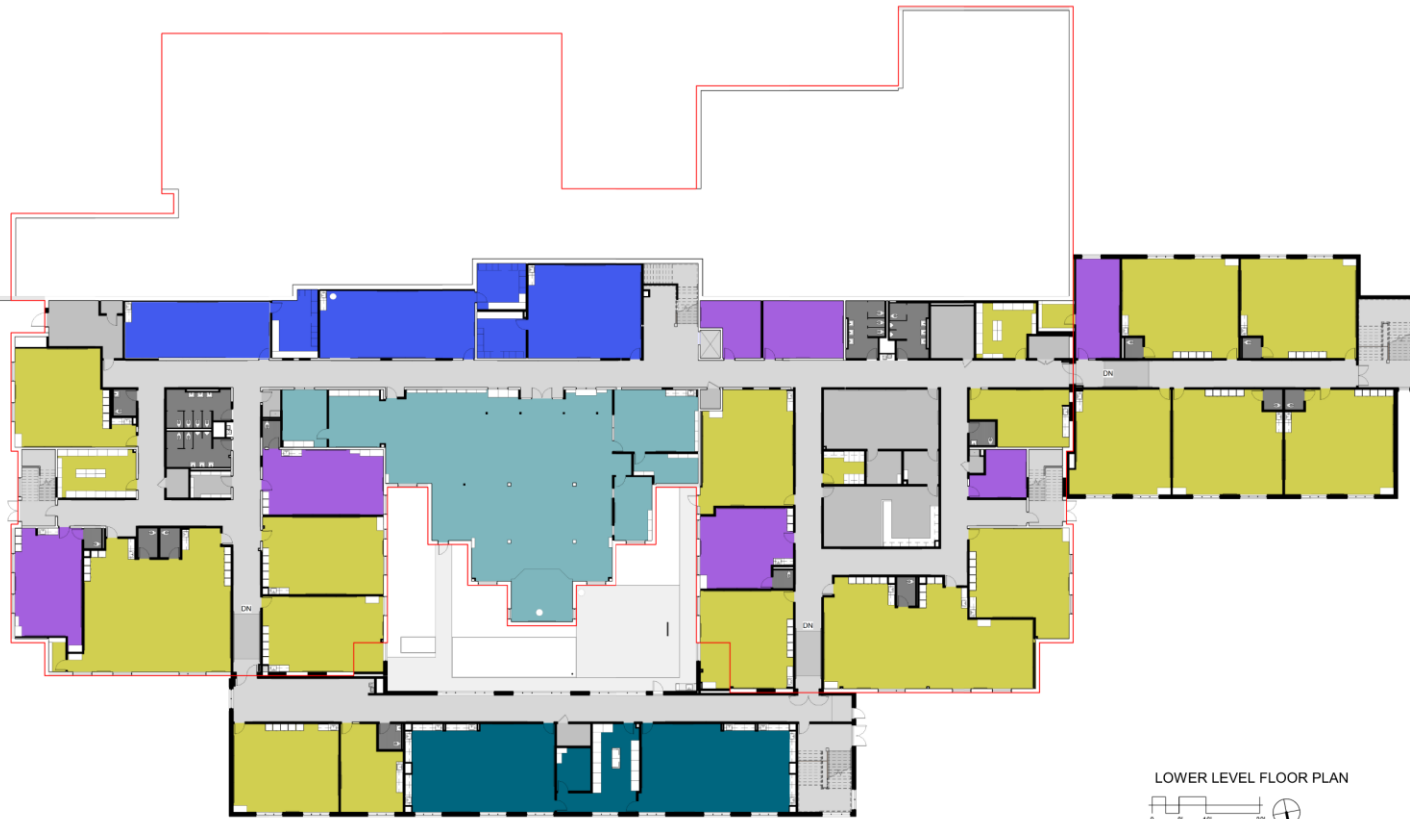
UPPER LEVEL FLOOR PLAN  
0 8 16 32  
N



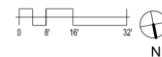
# Proposed Floor Plan Lower Floor

## LEGEND

- Administration
- Athletics
- Circulation
- Fine Arts
- Food Services
- General Learning Areas
- Health Services
- Media Center
- Music
- School Aged Child Care
- Special Education
- Support / MEP / Storage
- Toilets



LOWER LEVEL FLOOR PLAN



# Proposed Main Entry



Main Entry View



# Proposed Classroom Addition



View of Classroom Addition



# THANK YOU!

FOR MORE INFORMATION, GO TO [WWW.FCPS.EDU](http://WWW.FCPS.EDU) AND SEARCH FOR  
LEES CORNER ELEMENTARY SCHOOL

OR

<https://www.fcps.edu/lees-corner-elementary-capital-project>

