



LEES CORNER ELEMENTARY

Renovation and Additions
Sully District Land Use Committee

July 17, 2023

Project Introduction

Consultant Team

- Grimm + Parker–Architect
- Rinker Design Associates–Civil Engineer
- Ehlert Bryan–Structural Engineer
- Strickler Associates–MEP Engineer

Project Timeline

- Permitting 2023-2024
- Construction Spring of 2024
- Completion Summer of 2026

Existing Aerial View



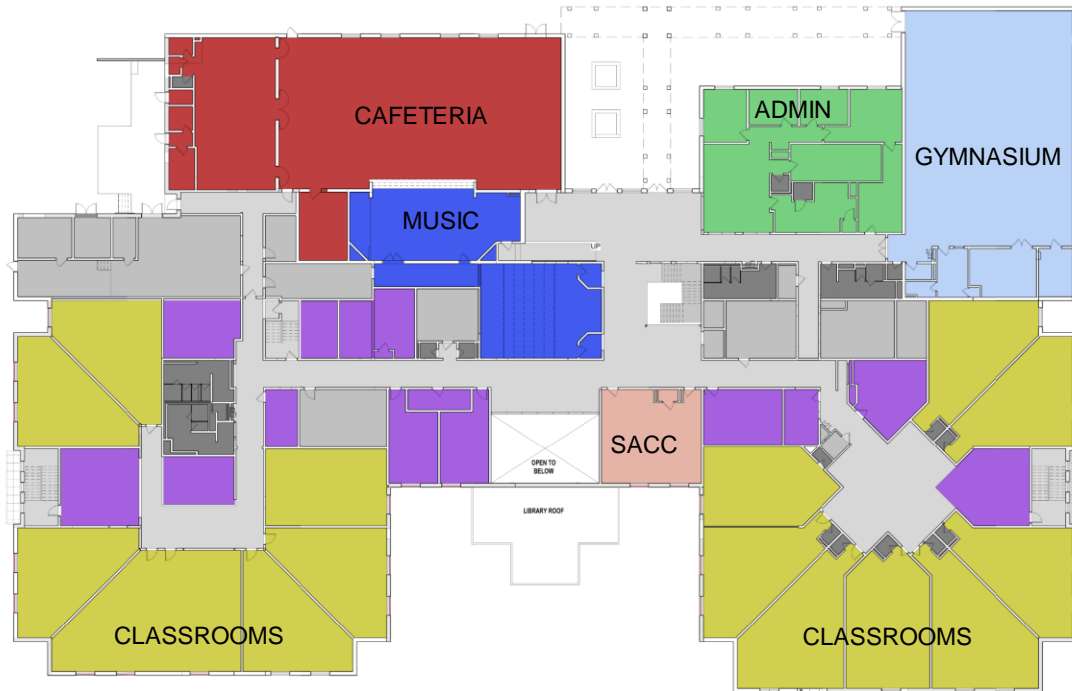
Existing Site Plan



PARKING SPACES: 90
BUSES: 10
SITE AREA : 605,606 SF
ZONING: PDH-3
EXISTING BUILDING AREA : 84,664 SF

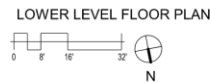
Existing Floor Plan

Upper Floor



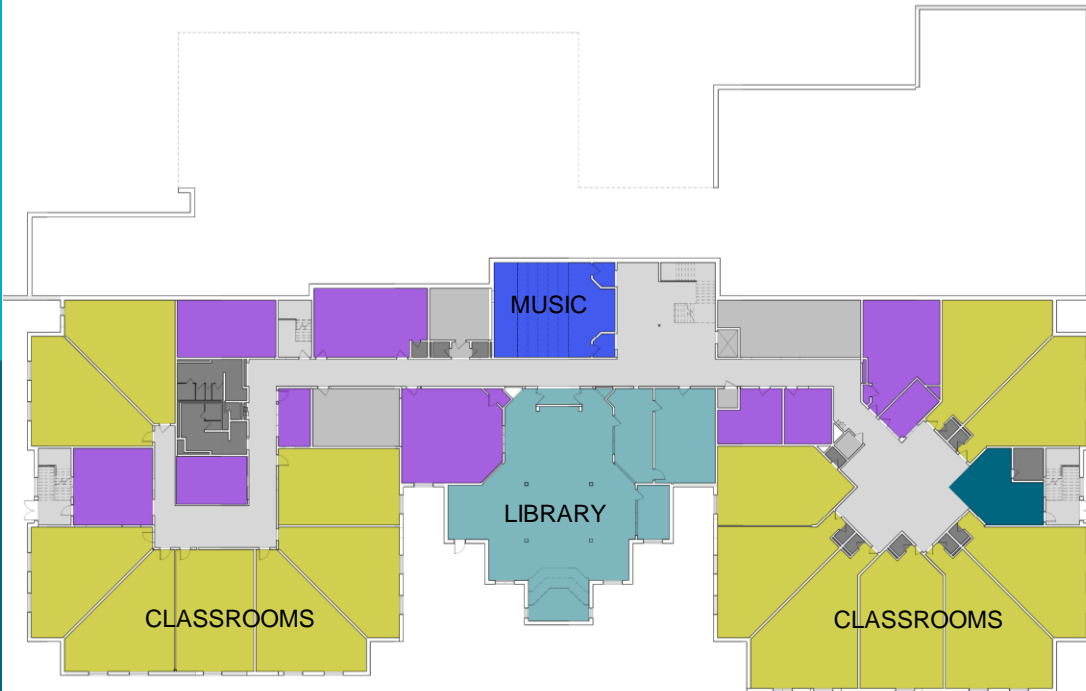
LEGEND

- Administration
- Athletics
- Circulation
- Fine Arts
- Food Services
- General Learning Areas
- Health Services
- Media Center
- Music
- School Aged Child Care
- Special Education
- Support / MEP / Storage
- Toilets



Existing Floor Plan

Lower Floor



LEGEND

- Administration
- Athletics
- Circulation
- Fine Arts
- Food Services
- General Learning Areas
- Health Services
- Media Center
- Music
- School Aged Child Care
- Special Education
- Support / MEP / Storage
- Toilets



Proposed Site Plan

PARKING SPACES: 102
BUSES: 10
SITE AREA : 605,606 SF
ZONING: PDH-3
PROPOSED ADDITION AREA : 29,399 SF
PROPOSED OVERALL BUILDING AREA : 114,063 SF



Proposed Floor Plan

Upper Floor



LEGEND

- Administration
- Athletics
- Circulation
- Fine Arts
- Food Services
- General Learning Areas
- Health Services
- Media Center
- Music
- School Aged Child Care
- Special Education
- Support / MEP / Storage
- Toilets

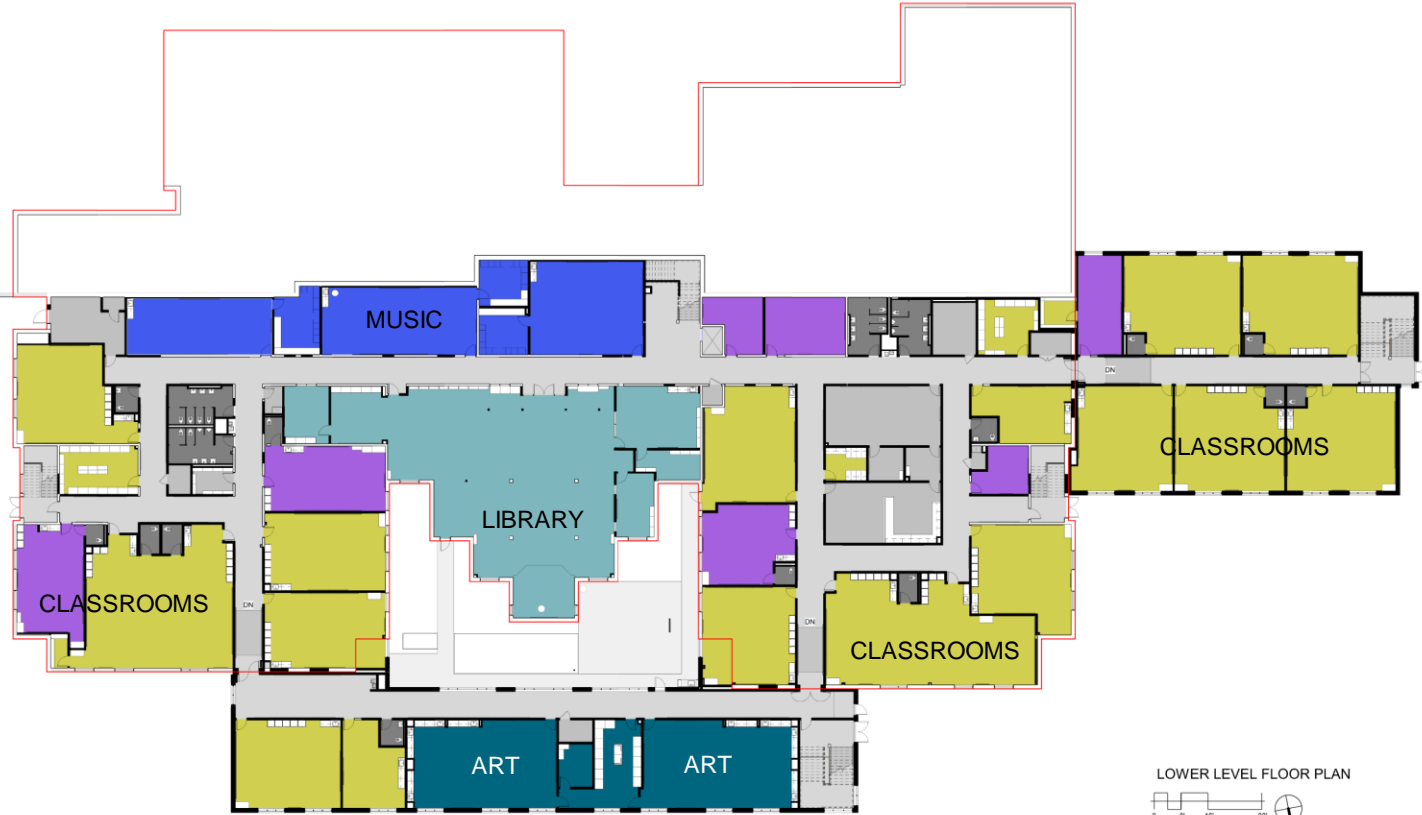
UPPER LEVEL FLOOR PLAN
 0 8 16 32
 N

Proposed Floor Plan

Lower Floor

LEGEND

- Administration
- Athletics
- Circulation
- Fine Arts
- Food Services
- General Learning Areas
- Health Services
- Media Center
- Music
- School Aged Child Care
- Special Education
- Support / MEP / Storage
- Toilets



LOWER LEVEL FLOOR PLAN
 0 8 16 32
 N

Proposed Exterior View



Proposed Aerial View



Proposed Bus Loop



Proposed Main Entry



Proposed Classroom Addition



Proposed Outdoor Classroom



Thank you!

FOR MORE INFORMATION, GO TO WWW.FCPS.EDU AND SEARCH FOR LEES CORNER ELEMENTARY

OR

<https://www.fcps.edu/lees-corner-elementary-capital-project>



www.fcps.edu