

LEES CORNER ELEMENTARY SCHOOL DESIGN COMMITTEE MEETING



MAY 26, 2022

Team Introduction

- FCPS Design and Construction
 - Bradley James – Coordinator
 - Subhash Gambhir – Architectural Engineer
- Consultant Design Team
 - Grimm + Parker– Architect
 - Rinker Design Associates – Civil Engineer
 - Ehlert Bryan – Structural Engineer
 - Strickler Associates – MEP Engineer
 - Nyikos Garcia – Food Service Consultant



Design Committee Role

- Presentation and Review of Preliminary Design
 - Existing Condition
 - Areas of Addition
 - Areas of Renovation
 - Parking Configurations
 - Site Access and Traffic Flow
- Questions
- Suggestions
- Concerns
- Liaison with the Community

Project Timeline

- ❖ Schematic Design Phase 4/2022-6/2022
- ❖ Design Committee Meeting #1 5/26/2022
- ❖ Design Development Phase 6/2022-8/2022
- ❖ Design Committee Meeting #2 TBD
- ❖ Intermediate Design Phase 8/2022 – 11/2022
- ❖ Final Design Phase 12/2022-3/2023
- ❖ Permit Phase 3/2023-3/2024
- ❖ Construction Start Spring 2024
- ❖ Final Completion Fall 2026

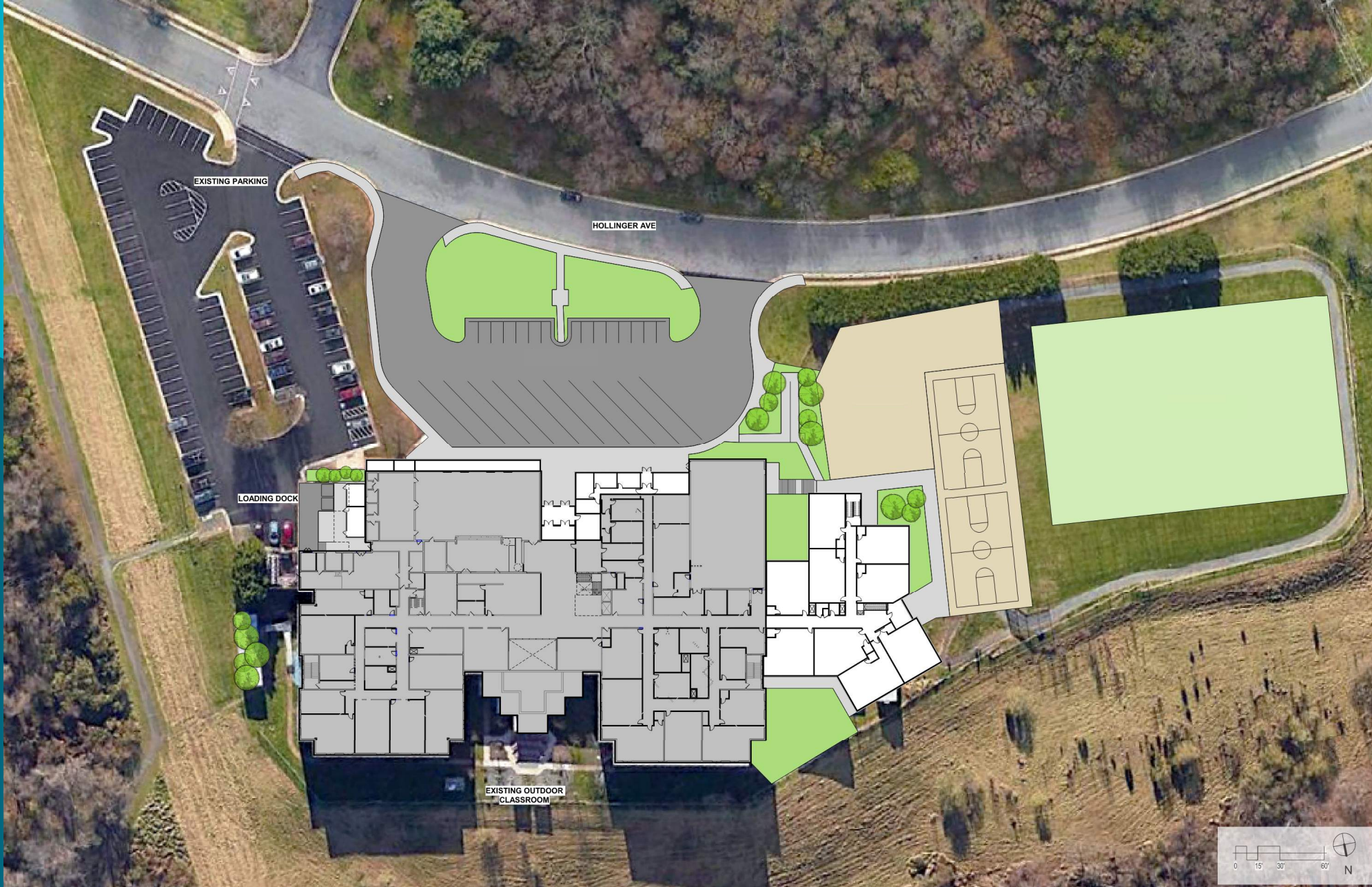
Project Scope

- FCPS Educational Specifications – Modified Criteria
- Additions
 - New Classrooms
 - Cafeteria and Kitchen Expansion
 - Admin and Gymnasium Expansion
- Renovations
 - Reconfigured and Renewed Spaces
 - New Mechanical and Plumbing Systems
 - Reconfigured Front Parking
 - Reconfigured Outdoor Play Areas
- Occupied Phased Construction

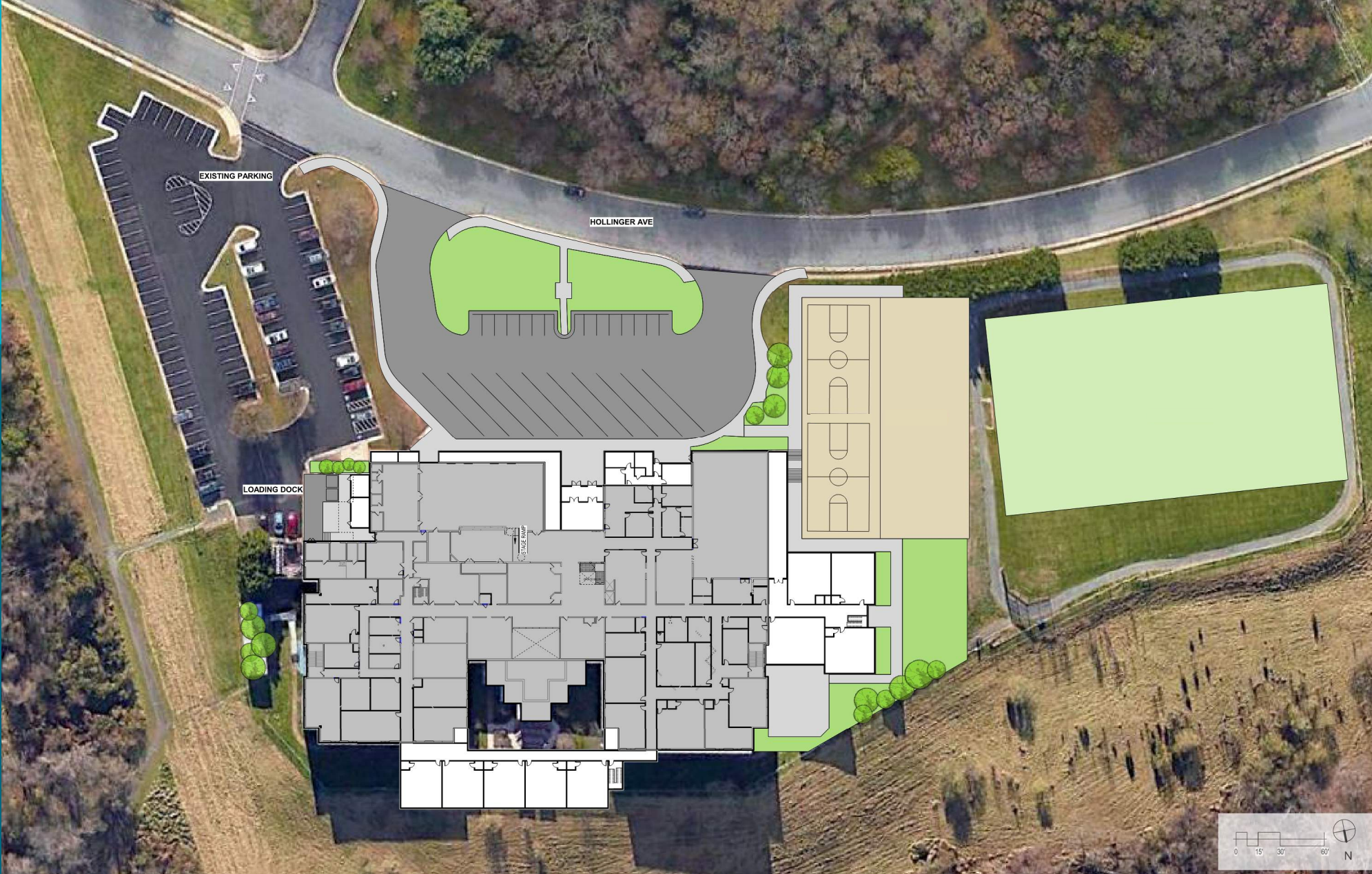
Site Plan - Existing



Site Plan – Scheme A



Site Plan – Scheme B



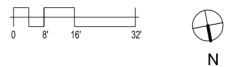
Site Plan – Scheme C



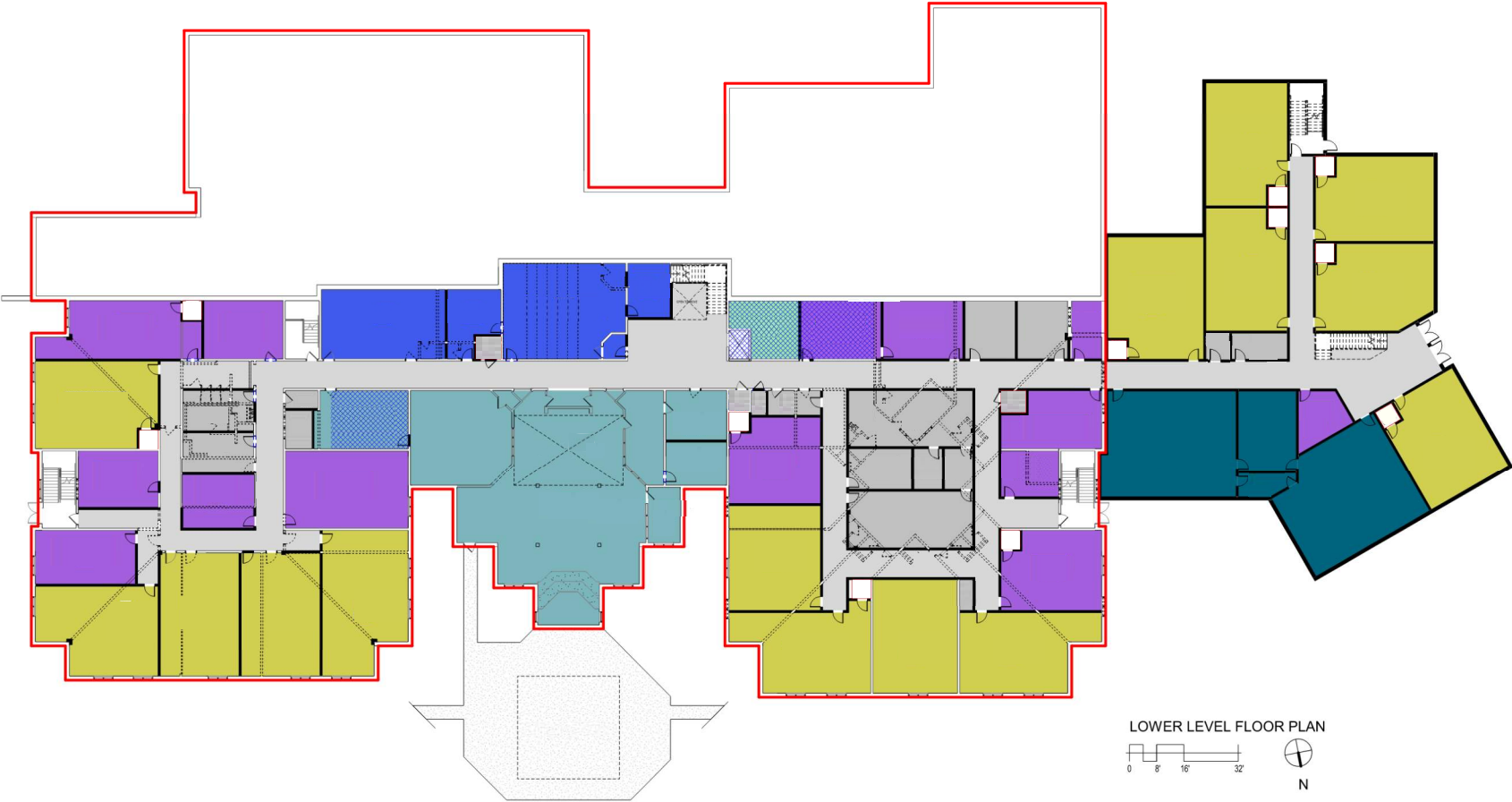
Upper Floor Plan – Scheme A



UPPER LEVEL FLOOR PLAN



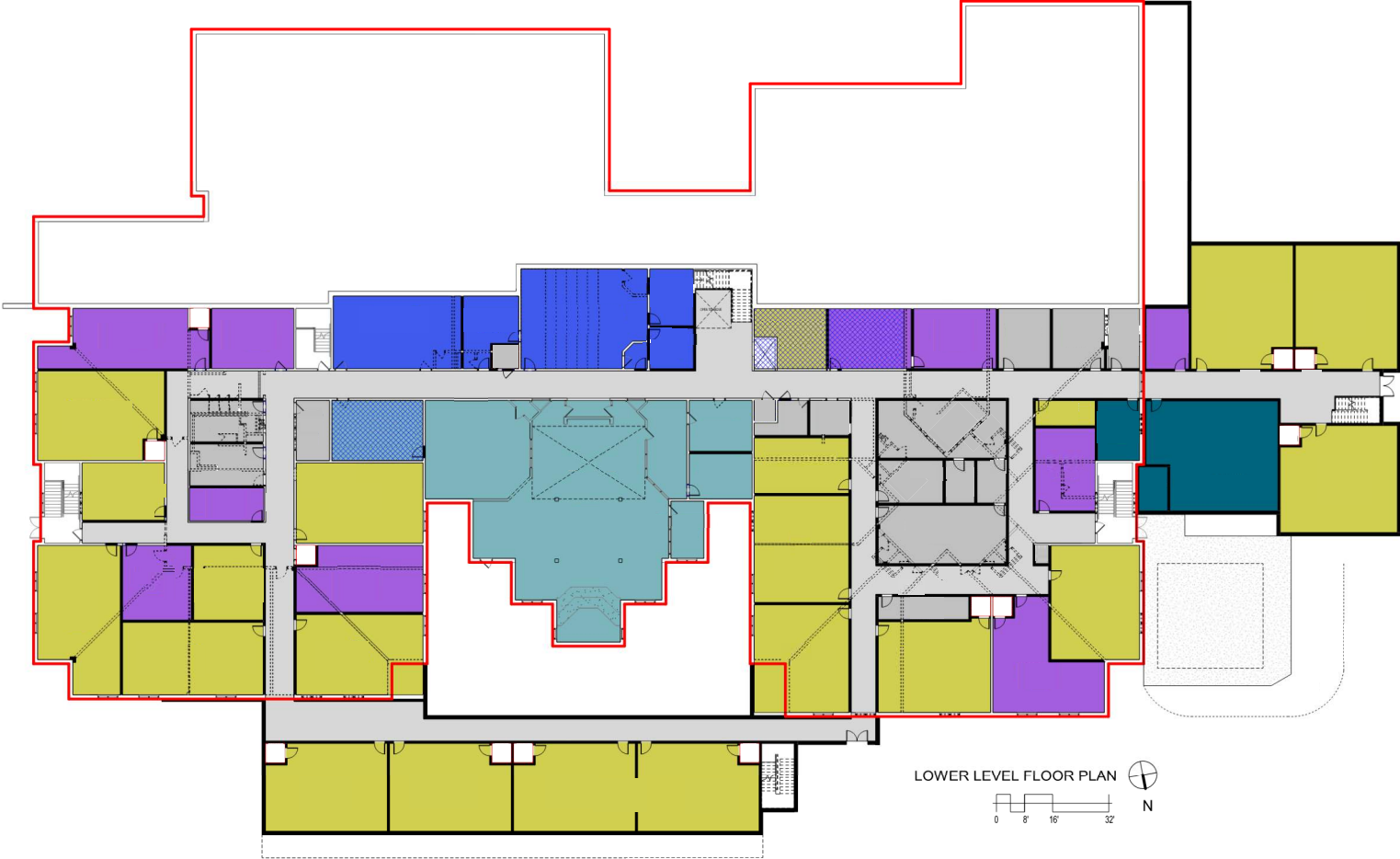
Lower Floor Plan – Scheme A



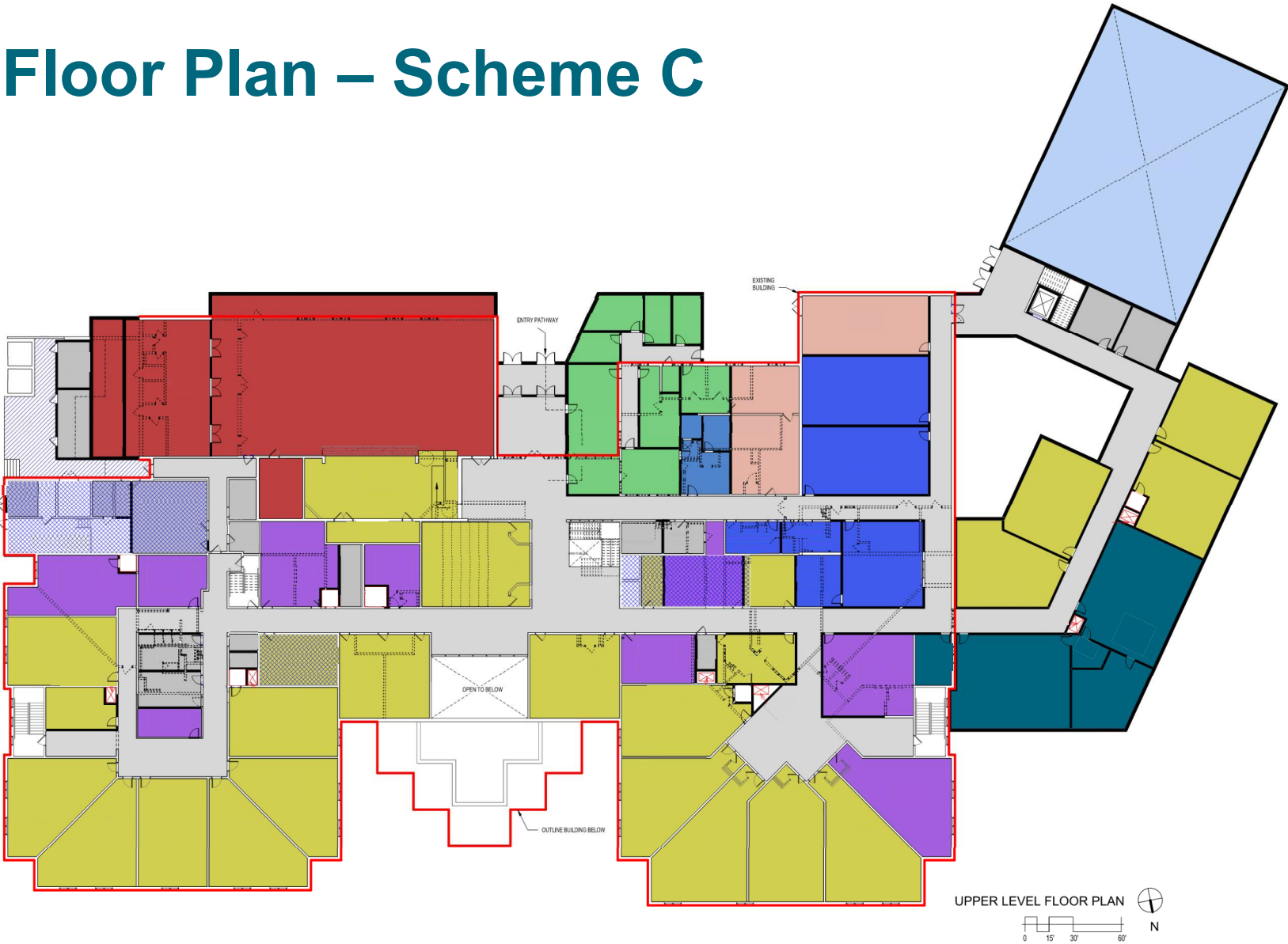
Upper Floor Plan – Scheme B



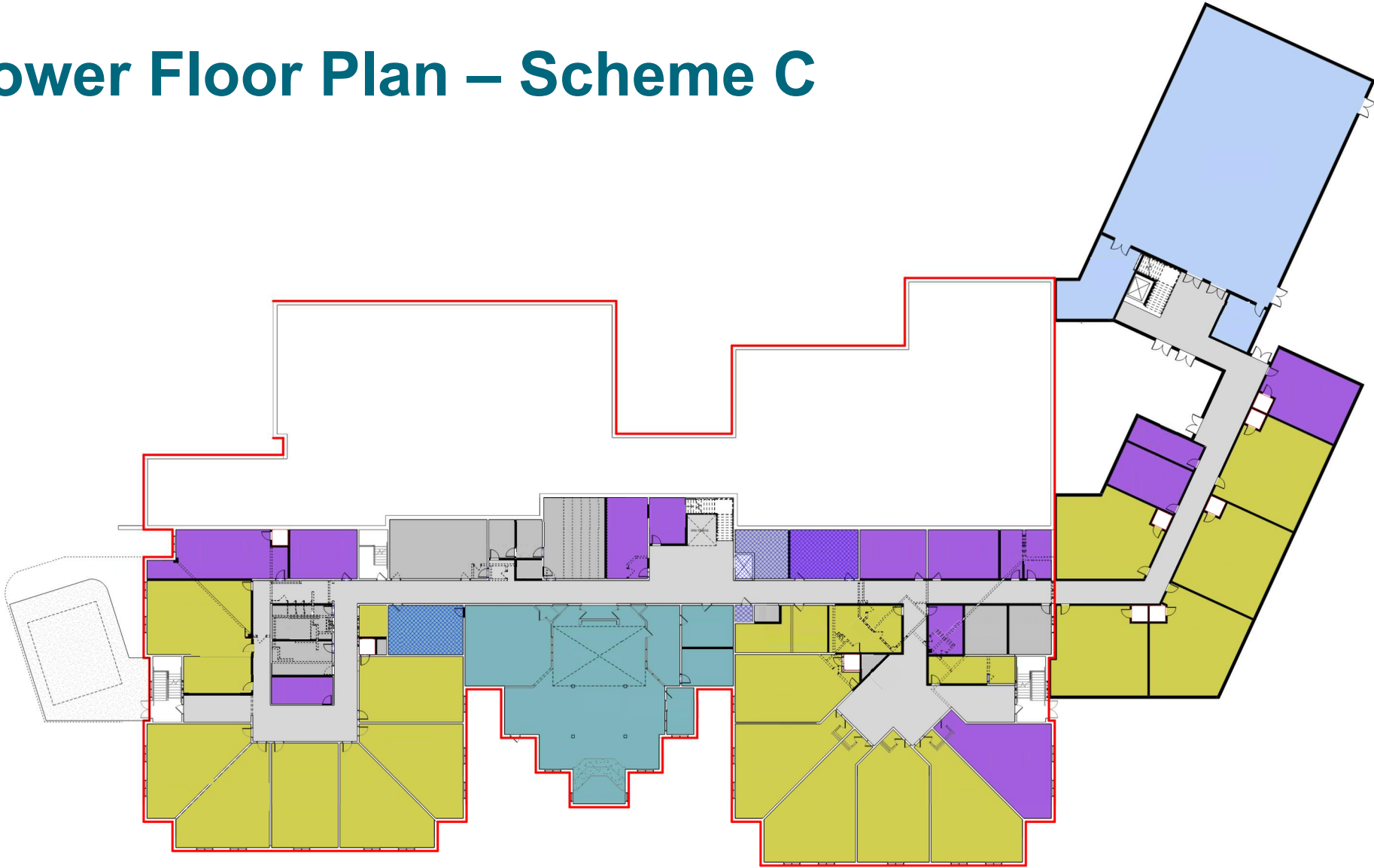
Lower Floor Plan – Scheme B



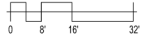
Upper Floor Plan – Scheme C



Lower Floor Plan – Scheme C

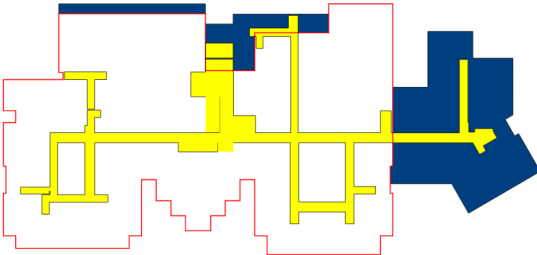


LOWER LEVEL FLOOR PLAN

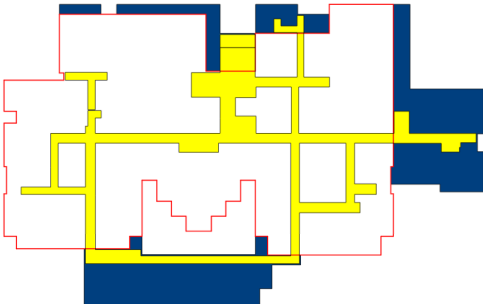


Schemes Comparison

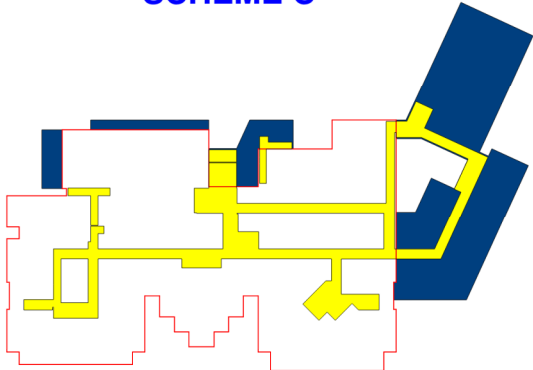
SCHEME A



SCHEME B



SCHEME C



COMPARISON

	A	B	C
GROSS SF (ADDITION)	26, 051	28,377 SF	29, 840 SF
GROSS SF (TOTAL) EXT 81,843 SF	107,894 SF	110,220 SF	111,683 SF
FULL SIZE GYM (5,452 SF)	NO 4,239 SF	YES	YES
FULL SIZE CAFETERIA (5,000 SF)	NO 4,489 SF	YES	YES
VESTIBULE	272 SF	304 SF	225 SF
CIRCULATION	16,362 SF (15.16%)	18, 680 SF (16.95 %)	18, 213 SF (16.30 %)

Scheme A - Exterior View



Scheme B - Exterior View



Scheme C - Exterior View



Thank you!

QUESTIONS?



Fairfax County
PUBLIC SCHOOLS
ENGAGE • INSPIRE • THRIVE

www.fcps.edu