



**Kent Gardens ES
Boundary/Capacity Study
Community Meeting**

September 19 & 27, 2023

Agenda

Welcome and Introductions

Goal for the Meeting

Presentation

Timeline

Small Group Discussion

Next Steps

Fairfax County School Board

Elaine Tholen, Chair

Karl Frisch, Vice Chair

Rachna Sizemore Heizer

Karen Keys-Gamarra

Abrar Omeish

Megan McLaughlin

Tamara Derenak Kaufax

Melanie K. Meren

Ricardy Anderson

Karen Corbett Sanders

Laura Jane Cohen

Stella Pekarsky

Rida Karim

Dranesville District

Providence District

Member-At-Large

Member-At-Large

Member-At-Large

Braddock District

Franconia District

Hunter Mill District

Mason District

Mount Vernon District

Springfield District

Sully District

School Board Student Representative

Welcome and Introductions

Megan Vroman, *Interim Assistant Superintendent, Region 2*

Douglas Tyson, *Assistant Superintendent, Region 1*

Janice Szymanski, *Chief, Facilities Services and Capital Programs*

Jessica Gillis, *Executive Director, Capital Improvements and Planning*

Brian Schoester, *Acting Director, Facilities Planning Services*

Christina Andros, *Coordinator, World Languages, Instructional Services*

Holly McGuigan, *Principal, Kent Gardens ES*

Stacy Kirkpatrick, *Principal, Chesterbrook ES*

Cherith Pierson, *Principal, Churchill Road ES*

Kathleen Quigley, *Principal, Franklin Sherman ES*

Liz Beaty, *Principal, Haycock ES*

Amy Briggs, *Principal, Spring Hill ES*

Christie Scott, *Director, Community Relations*

Kathy Ryan, *Community Relations*

Immersion

- During this process, there have been questions about the impact of the French Immersion Program.
- Multiple scenarios (i.e., splitting immersion program by lower and upper level, a second immersion site, moving program to a new site, and eliminating the program) were explored.
- It was found that all scenarios compromised the access to a high quality program and/or could not be implemented in a timely manner.
- It has been decided that the program, which is predominantly attended by Kent Gardens base students, should remain.

Tonight's Goal

GOAL:

To present boundary change scenarios for capacity relief at Kent Gardens Elementary School (ES) and to collect feedback on those scenarios.

Boundary Adjustment Process (Regulation 8130)

1. Community Meeting

- **Boundary Scoping:** The community is asked to suggest which schools and areas should be considered; may be done in advance of a Scope of Boundary Study presentation to the School Board.

2. Scope of Boundary Study Presentation: A scope of study for schools to be considered is presented to the School Board for approval.

3. Community Meeting(s)

- **Boundary Study:** Possible boundary change options are prepared by staff for consideration with the community and to collect feedback on the options.

4. School Board Meeting/New Business: Staff present a recommendation for a boundary adjustment to the School Board.

5. School Board Public Hearing: The School Board holds a Public Hearing on the boundary adjustment being considered.

6. School Board Meeting/Action: The School Board votes on a decision for the boundary adjustment.

Tonight's
Meeting

Boundary Scope - Spring 2023

- Collected input on what schools should be included in the boundary study.
- Feedback and Questions/Answers posted to “Kent Gardens Capacity Challenges” on www.fcps.edu.
- Feedback was used to recommend scope to School Board.
 - School Board approved scope on July 13, 2023.
- Scope and feedback were used to develop scenarios for consideration.

School Capacity and Membership

School	Design Capacity	SY 22-23 Program Capacity	SY 22-23 Membership	SY 22-23 Program Capacity Utilization %	Temporary Class-rooms	Modular Class-rooms	SY 27-28 Projection	SY 27-28 Capacity Utilization %
Kent Gardens ES	896	848	1,023	121%	13	-	1,016	120%
Chesterbrook ES	700	682	527	77%	4	-	435	64%
Churchill Road ES	924	701	605	86%	2	10	582	83%
Franklin Sherman ES	504	435	337	77%	-	-	358	82%
Haycock ES	932	916	869	95%	4	-	842	92%
Spring Hill ES	1,260	1,037	866	84%	-	-	919	89%

Source: FCPS, FY 2024-28 Capital Improvement Program, February 2023.

Note: Schools based on scope approved by School Board on July 13, 2023.

Boundary Study Meeting

- Share scenarios for a boundary adjustment.
- No “vote” on scenarios today.
- Collect community feedback to assist in staff recommendation to the School Board.
- School Board votes to approve any boundary adjustment and phasing at a later date.

Phasing

- Policy 8130.7 addresses phasing in Section XI:

“XI. PHASING OF ADJUSTMENTS

When possible, adjustments under this policy shall be implemented through attrition and phasing. The School Board may approve a grade-by-grade phase-in of adjustments for students beginning with the incoming class at the middle or high school levels, when feasible. The School Board may adopt other phasing plans as appropriate to the individual boundary study.

Parents of rising sixth (or fifth) graders, eighth graders, and twelfth graders affected by a boundary change may, at the discretion of the School Board, be provided the option of having their students remain in the school they attended prior to the change.”

- The School Board will decide any other phasing plan when considering action to change any school boundary.
- Please provide feedback and ideas on phasing.

Scenarios for Consideration

- The following scenarios are for consideration.
- Projected student estimates do not show phasing.
 - Policy 8130.7 addresses phasing in Section XI.
 - Shows estimated impacts on capacity.
- Student adjustments are estimates using SY 2022-23 numbers and will vary based on the following:
 - Phasing.
 - Transfers for other program offerings of FCPS.

Scenario A

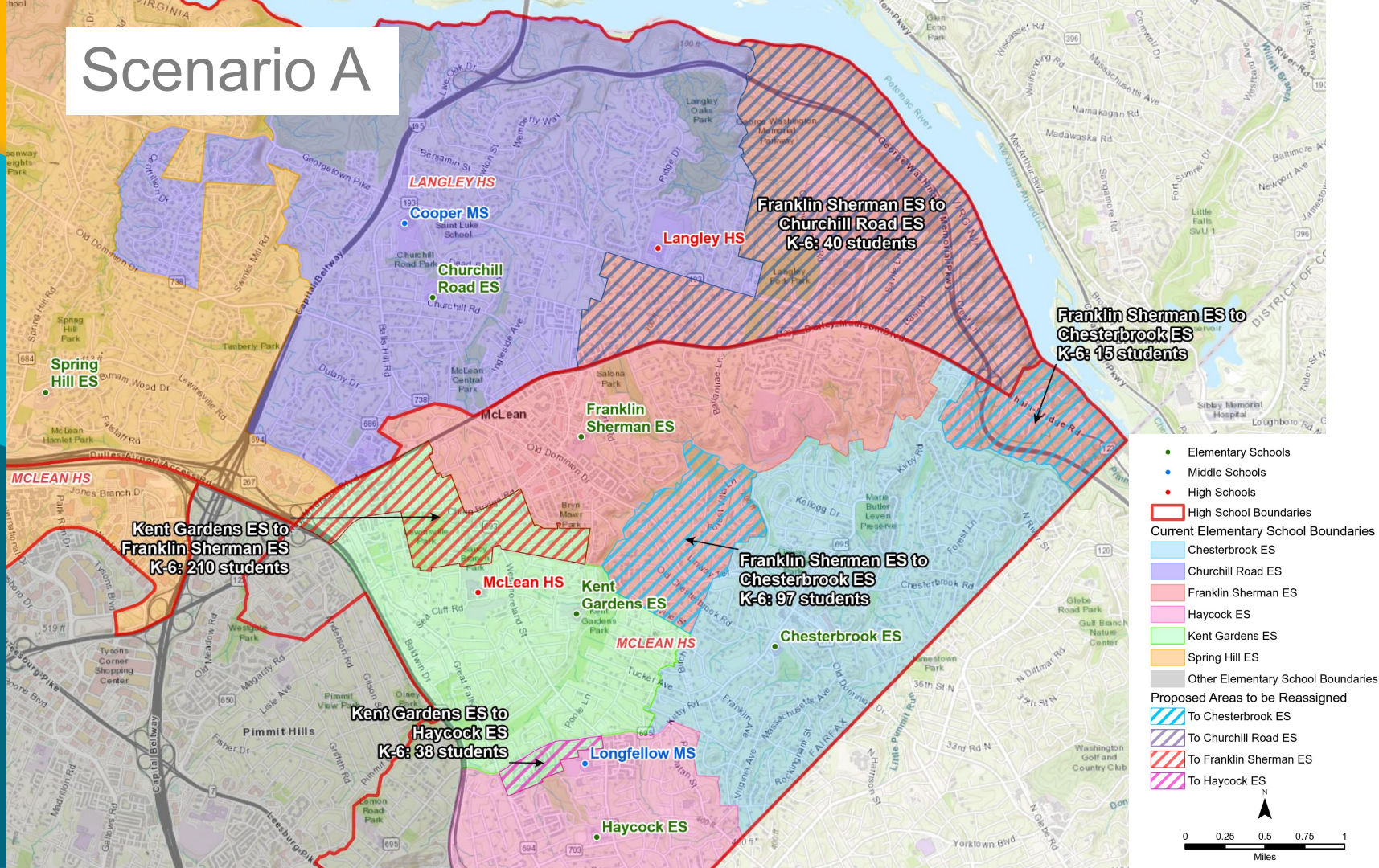
- Projected student estimates do not show phasing
- Considers an adjustment of boundaries for 5 schools
- Middle and high school boundaries do not change

- French Immersion remains at Kent Gardens ES

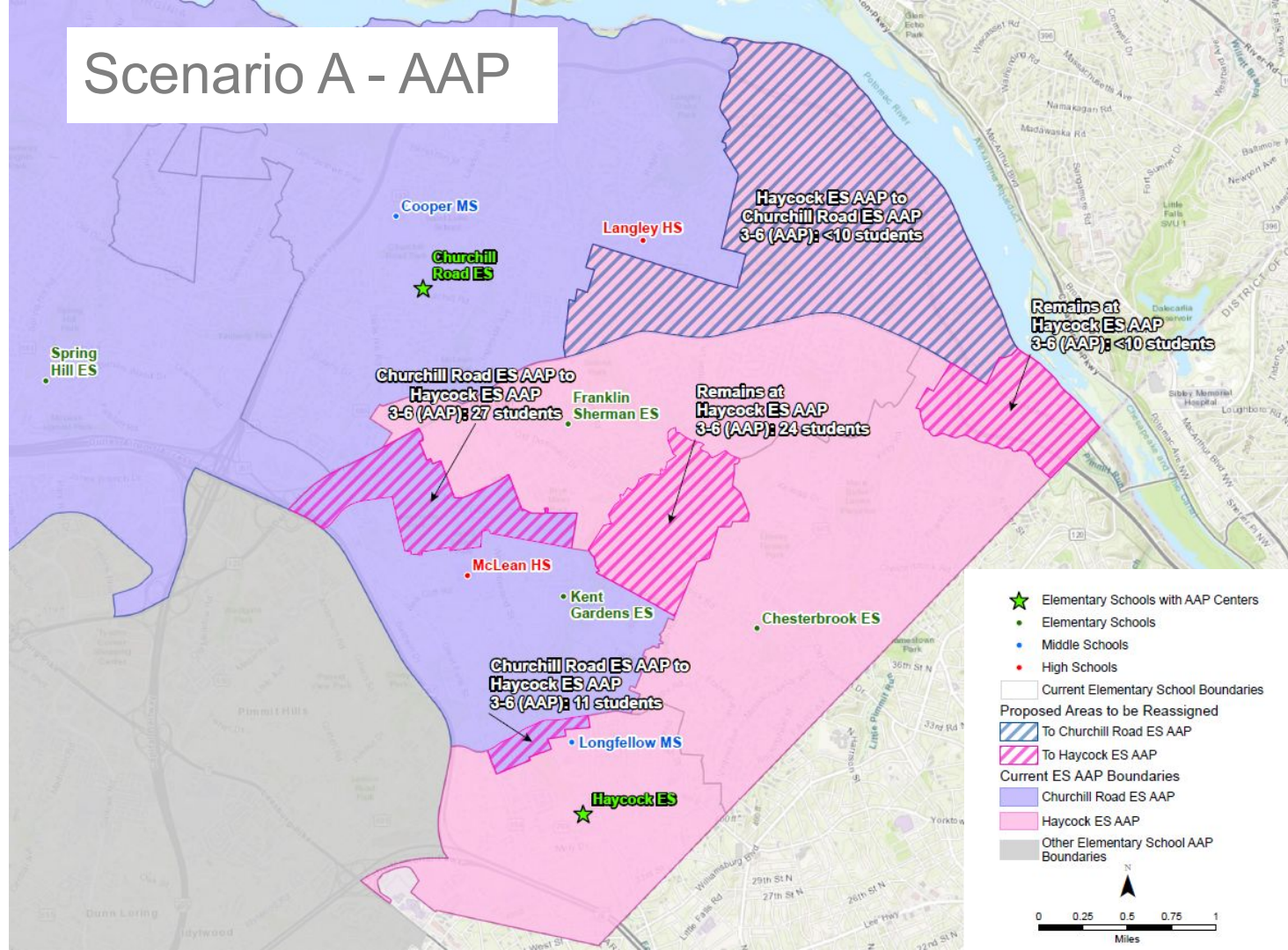
School	Design Capacity	SY 22-23 Program Capacity	SY 22-23 Member-ship	Estimated Net Change	SY 22-23 Program Capacity Utilization %	SY 27-28 Projection	SY 27-28 Capacity Utilization %
Kent Gardens	896	848	1,023	-	121%	1,016	120%
Chesterbrook	700	682	527	-	77%	435	64%
Churchill Road ¹	924	701	605	-	86%	582	83%
Franklin Sherman	504	435	337	-	77%	358	82%
Spring Hill	1,260	1,037	866	-	84%	919	89%
Haycock ¹	932	916	869	-	95%	842	92%
Kent Gardens	896	848	775	-248	91%	768	91%
Chesterbrook	700	682	639	+112	94%	547	80%
Churchill Road ¹	924	701	645	+40	92%	622	89%
Franklin Sherman	504	435	395	+58	91%	416	96%
Spring Hill	1,260	1,037	866	0	84%	919	89%
Haycock ¹	932	916	907	+38	99%	880	96%

¹School is a general education school and an AAP Center

Scenario A



Scenario A - AAP



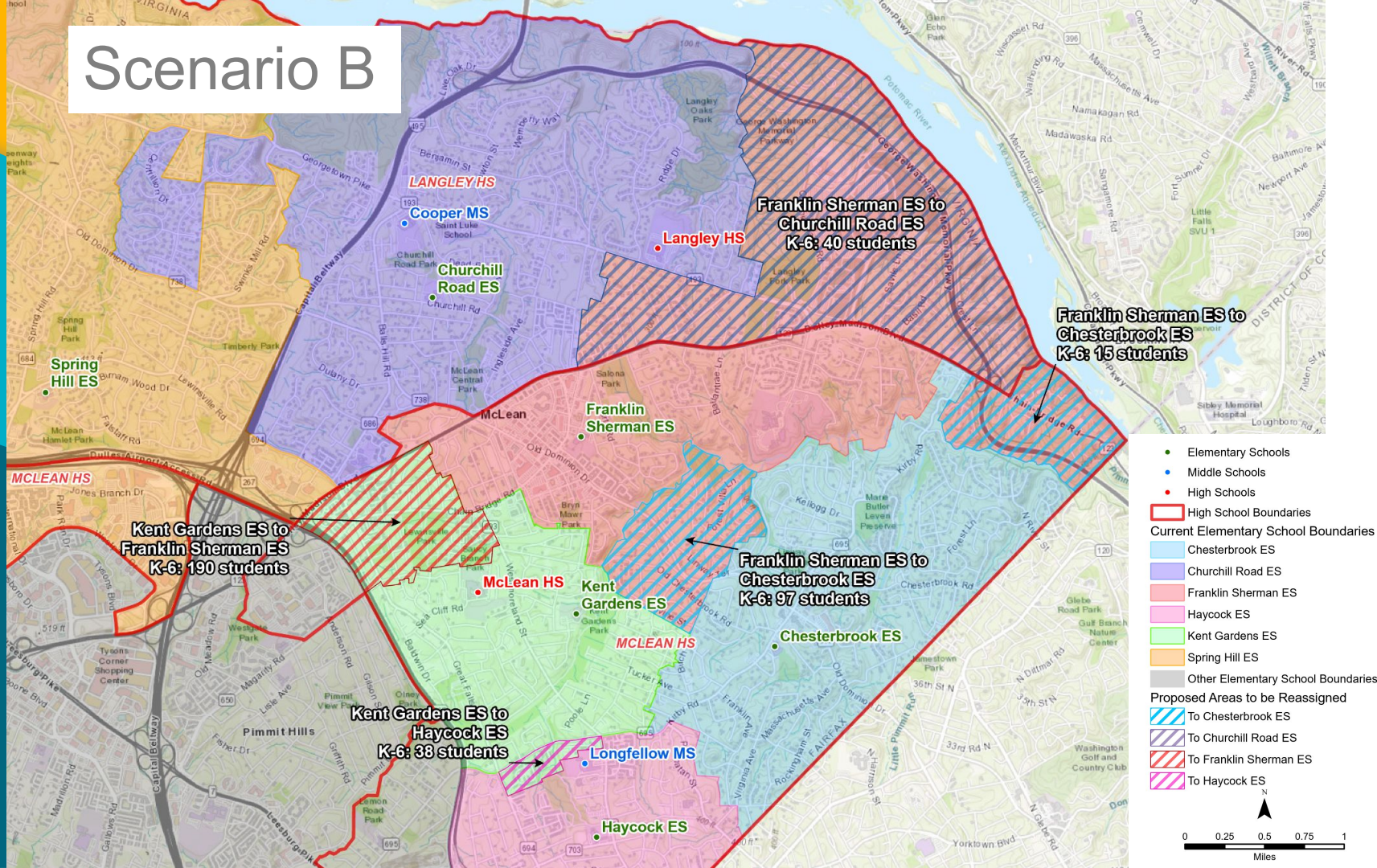
Scenario B

- Projected student estimates do not show phasing
- Considers an adjustment of boundaries for 5 schools
- Middle and high school boundaries do not change
- French Immersion remains at Kent Gardens ES

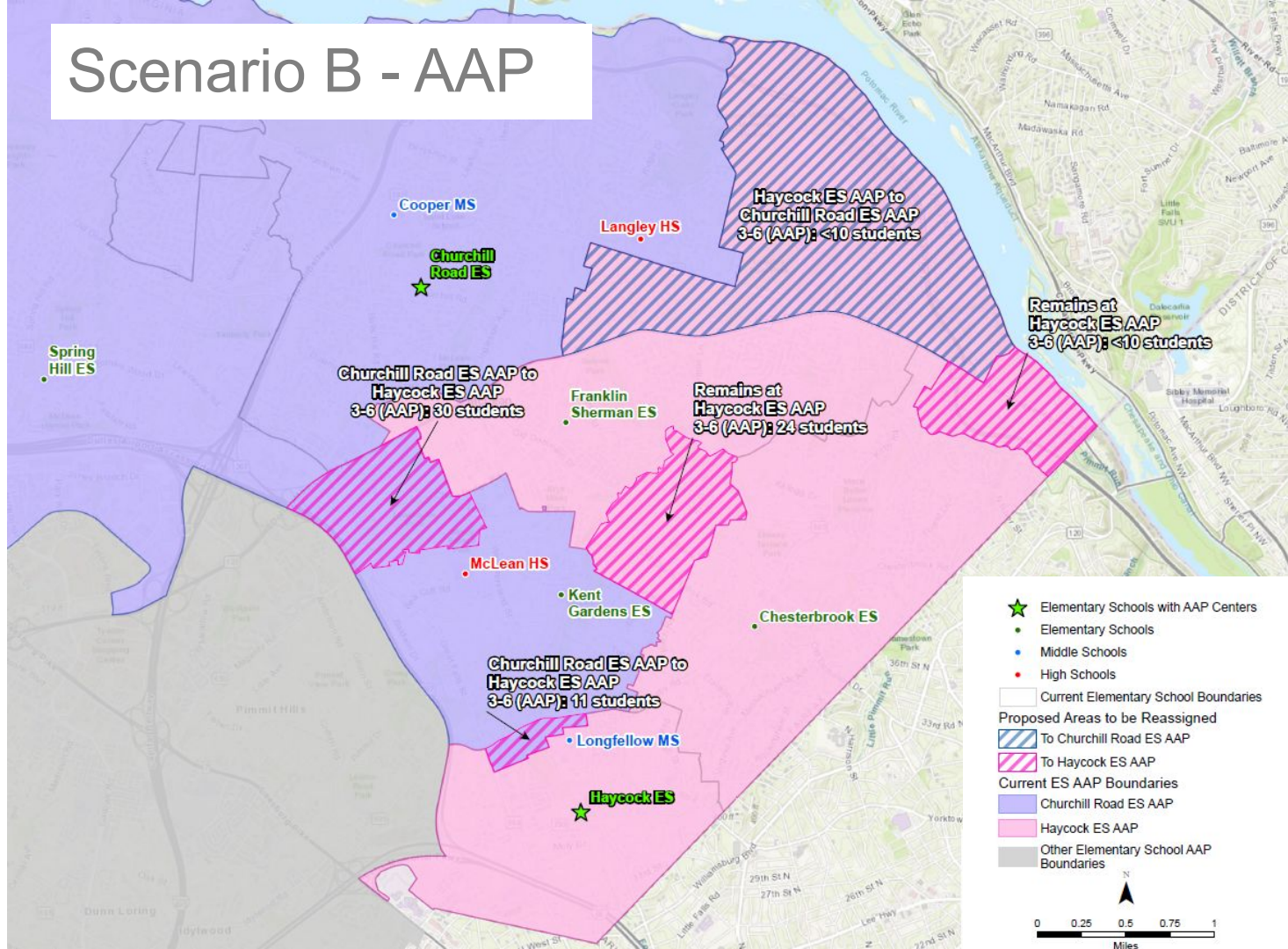
School	Design Capacity	SY 22-23 Program Capacity	SY 22-23 Member-ship	Estimated Net Change	SY 22-23 Program Capacity Utilization %	SY 27-28 Projection	SY 27-28 Capacity Utilization %
Kent Gardens	896	848	1,023	-	121%	1,016	120%
Chesterbrook	700	682	527	-	77%	435	64%
Churchill Road ¹	924	701	605	-	86%	582	83%
Franklin Sherman	504	435	337	-	77%	358	82%
Spring Hill	1,260	1,037	866	-	84%	919	89%
Haycock ¹	932	916	869	-	95%	842	92%
Adjusted Kent Gardens	896	848	795	-228	94%	788	93%
Adjusted Chesterbrook	700	682	639	+112	94%	547	80%
Adjusted Churchill Road ¹	924	701	645	+40	92%	622	89%
Adjusted Franklin Sherman	504	435	375	+38	86%	396	91%
Adjusted Spring Hill	1,260	1,037	866	0	84%	919	89%
Adjusted Haycock ¹	932	916	907	+38	99%	880	96%

¹ School is a general education school and an AAP Center

Scenario B



Scenario B - AAP



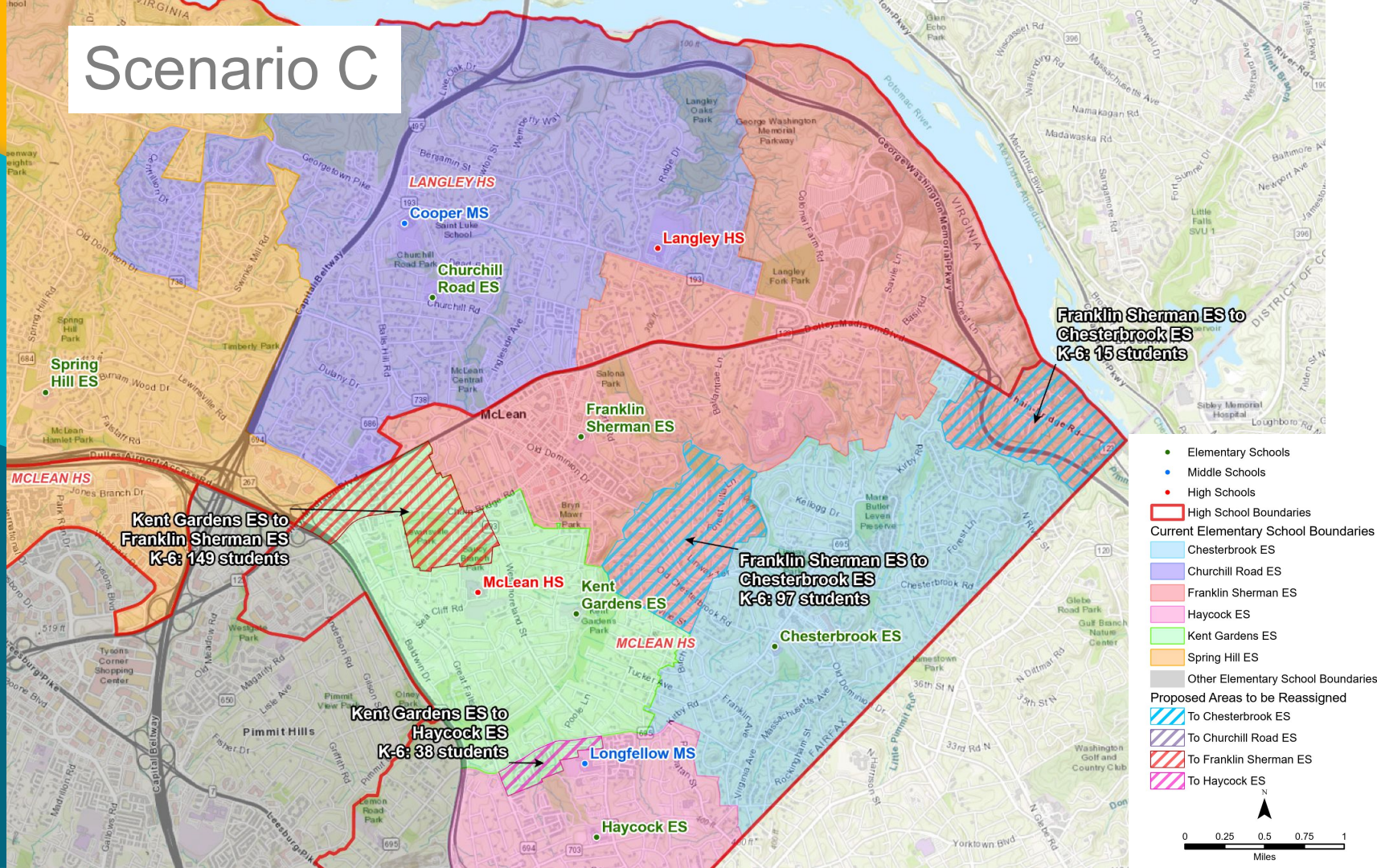
Scenario C

- Projected student estimates do not show phasing
- Considers an adjustment of boundaries for 4 schools
- Middle and high school boundaries do not change
- French Immersion remains at Kent Gardens ES

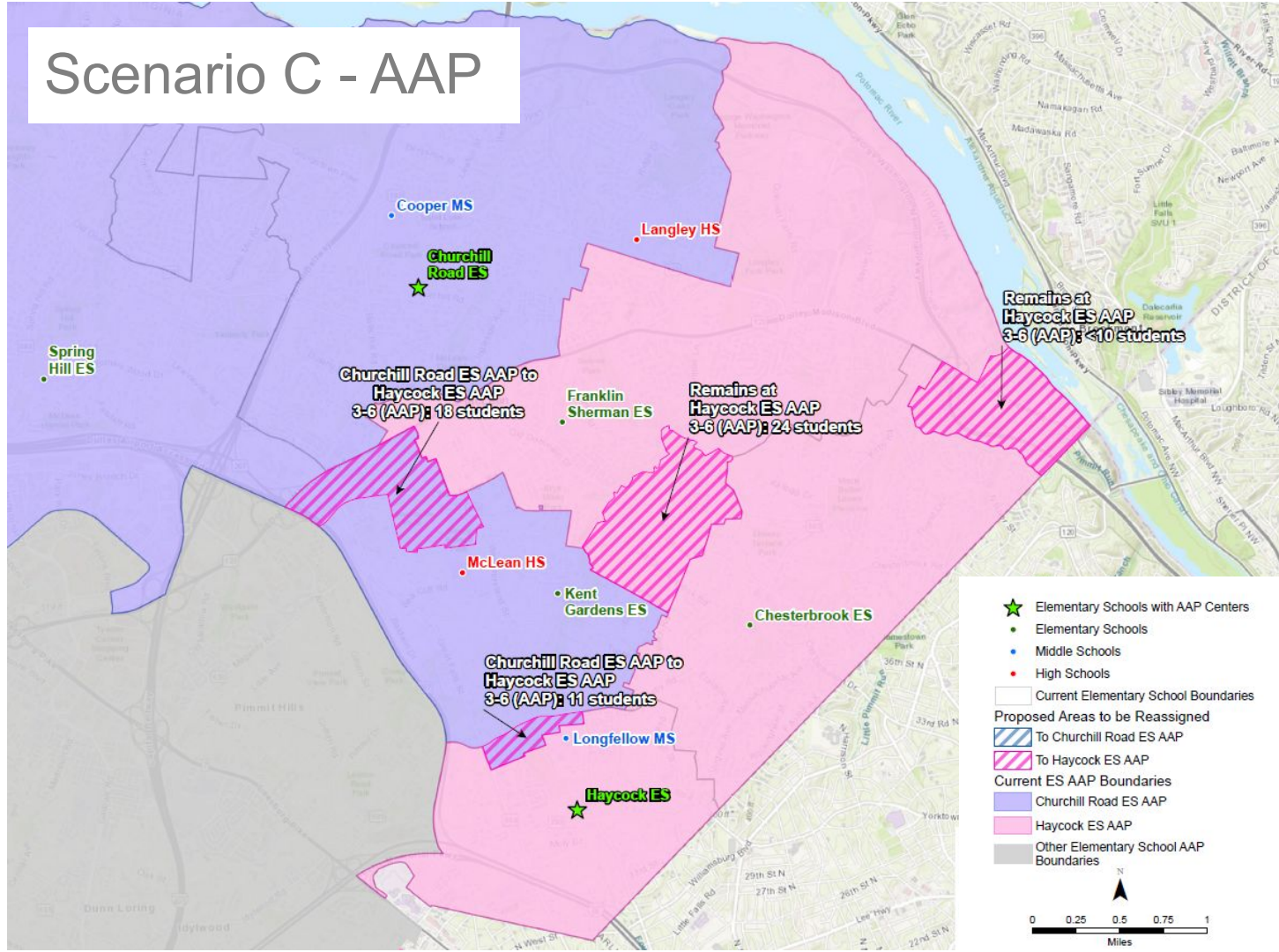
School	Design Capacity	SY 22-23 Program Capacity	SY 22-23 Member-ship	Estimated Net Change	SY 22-23 Program Capacity Utilization %	SY 27-28 Projection	SY 27-28 Capacity Utilization %
Kent Gardens	896	848	1,023	-	121%	1,016	120%
Chesterbrook	700	682	527	-	77%	435	64%
Churchill Road ¹	924	701	605	-	86%	582	83%
Franklin Sherman	504	435	337	-	77%	358	82%
Spring Hill	1,260	1,037	866	-	84%	919	89%
Haycock ¹	932	916	869	-	95%	842	92%
Kent Gardens	896	848	836	-187	99%	829	98%
Chesterbrook	700	682	639	+112	94%	547	80%
Churchill Road ¹	924	701	605	0	86%	582	83%
Franklin Sherman	504	435	374	+37	86%	395	91%
Spring Hill	1,260	1,037	866	0	84%	919	89%
Haycock ¹	932	916	907	+38	99%	880	96%

¹ School is a general education school and an AAP Center

Scenario C



Scenario C - AAP



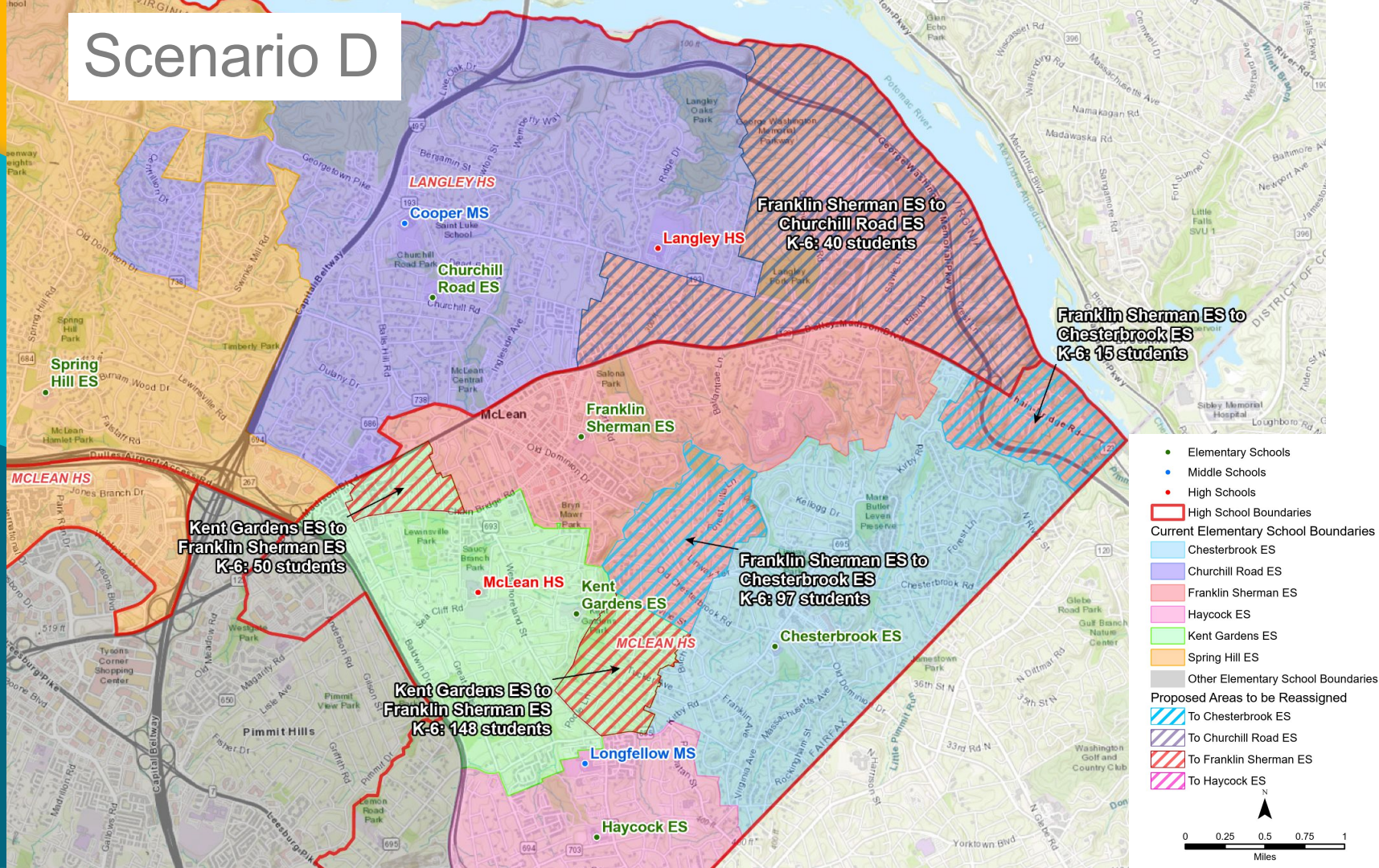
Scenario D

- Projected student estimates do not show phasing
- Considers an adjustment of boundaries for 4 schools
- Middle and high school boundaries do not change
- French Immersion remains at Kent Gardens ES

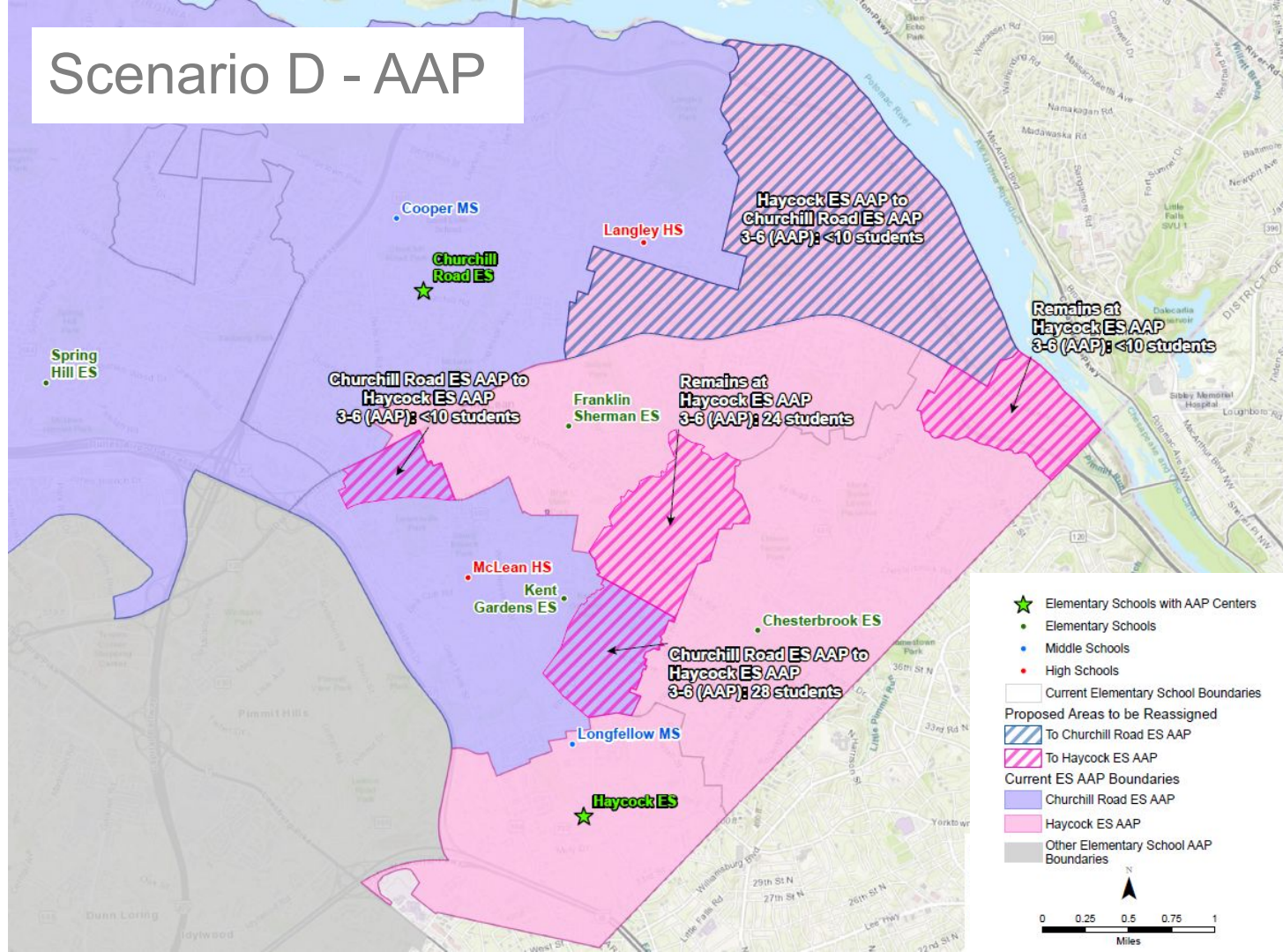
School	Design Capacity	SY 22-23 Program Capacity	SY 22-23 Member-ship	Estimated Net Change	SY 22-23 Program Capacity Utilization %	SY 27-28 Projection	SY 27-28 Capacity Utilization %
Kent Gardens	896	848	1,023	-	121%	1,016	120%
Chesterbrook	700	682	527	-	77%	435	64%
Churchill Road ¹	924	701	605	-	86%	582	83%
Franklin Sherman	504	435	337	-	77%	358	82%
Spring Hill	1,260	1,037	866	-	84%	919	89%
Haycock ¹	932	916	869	-	95%	842	92%
Kent Gardens	896	848	825	-198	97%	818	96%
Chesterbrook	700	682	639	+112	94%	547	80%
Churchill Road ¹	924	701	645	+40	92%	622	89%
Franklin Sherman	504	435	383	+46	88%	404	93%
Spring Hill	1,260	1,037	866	0	84%	919	89%
Haycock ¹	932	916	869	0	95%	842	92%

¹ School is a general education school and an AAP Center

Scenario D



Scenario D - AAP



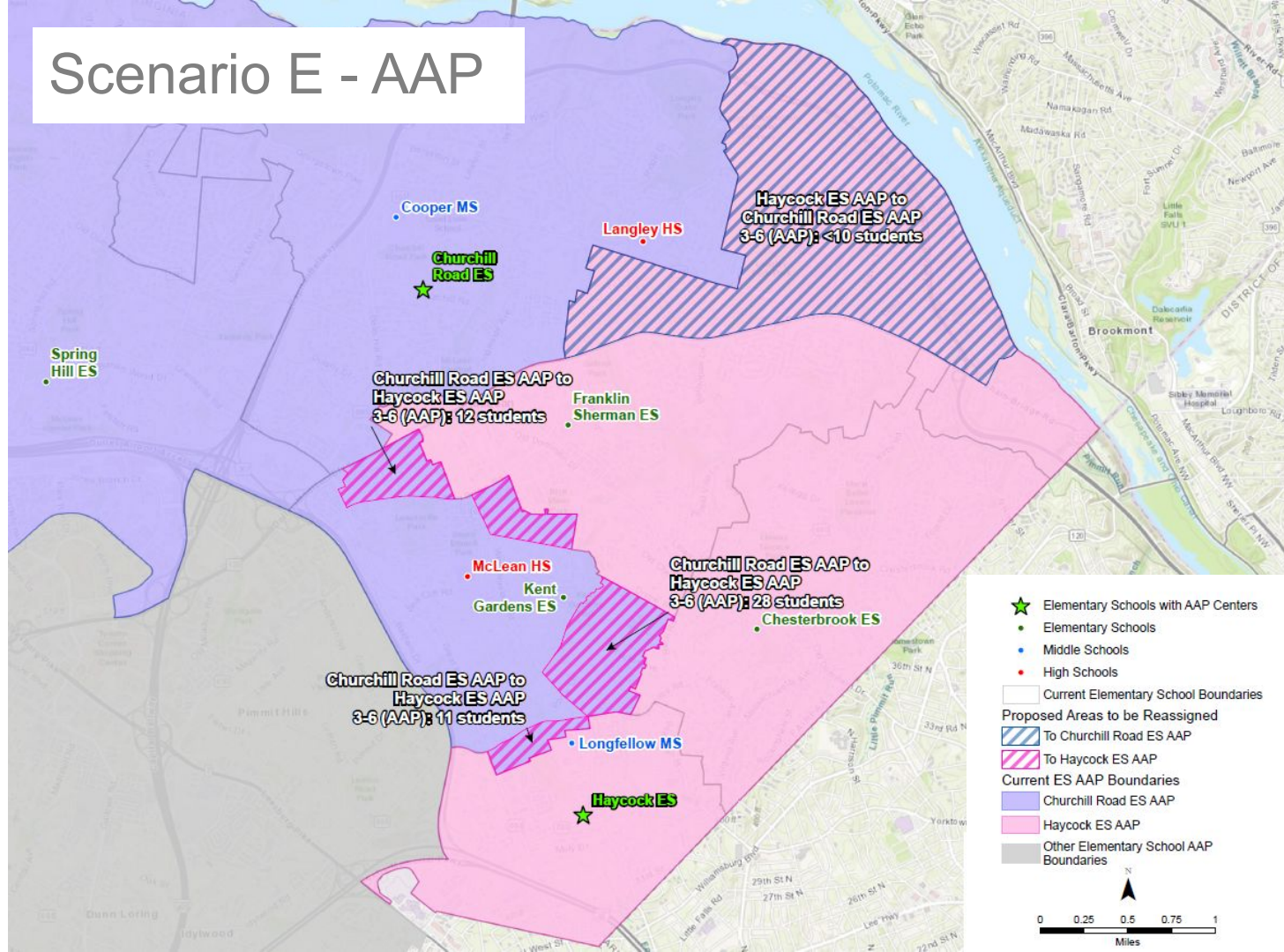
Scenario E

- Projected student estimates do not show phasing
- Considers an adjustment of boundaries for 5 schools
- Middle and high school boundaries do not change
- French Immersion remains at Kent Gardens ES

School	Design Capacity	SY 22-23 Program Capacity	SY 22-23 Member-ship	Estimated Net Change	SY 22-23 Program Capacity Utilization %	SY 27-28 Projection	SY 27-28 Capacity Utilization %	
Kent Gardens	896	848	1,023	-	121%	1,016	120%	
Chesterbrook	700	682	527	-	77%	435	64%	
Churchill Road ¹	924	701	605	-	86%	582	83%	
Franklin Sherman	504	435	337	-	77%	358	82%	
Spring Hill	1,260	1,037	866	-	84%	919	89%	
Haycock ¹	932	916	869	-	95%	842	92%	
Adjusted	Kent Gardens	896	848	726	-297	86%	719	85%
	Chesterbrook	700	682	675	+148	99%	583	85%
	Churchill Road ¹	924	701	645	+40	92%	622	89%
	Franklin Sherman	504	435	408	+71	94%	429	99%
	Spring Hill	1,260	1,037	866	0	84%	919	89%
	Haycock ¹	932	916	907	+38	99%	880	96%

¹ School is a general education school and an AAP Center

Scenario E - AAP



Questions to Consider

1. What are the strengths of each scenario?
2. What are the challenges of each scenario?
3. What phasing would you like to be considered?
4. What else would you like FCPS to know?



Timeline

April 2023

Boundary Scope Community Meeting



July 2023

Boundary Scope Recommendations Presented to School Board

September 2023

Boundary Study Community Meeting



TBD

Public Hearing



TBD

School Board Action

Fall 2024

New Boundary Effective (Anticipated 2024-25 School Year)



Notes opportunities in the timeline for community feedback

Next Steps

Questions and Feedback

- Will be shared with staff and the School Board.
- Facilities will develop staff recommendation for the School Board to consider.
- Visit the webpage for continued information.
 - Search: “Kent Gardens Capacity”.
 - Sign up for mailing list to stay informed.
 - Feedback form open through October 4.

QR Code for Online
Feedback Form and
Mailing List Sign Up

