

DUNN LORING ELEMENTARY SCHOOL

DESIGN FEEDBACK AND ENGAGEMENT COMMITTEE



SEPTEMBER 21, 2022

Team Introduction

- FCPS Design and Construction
 - Bradley James - Coordinator
 - Subhash Gambhir - Architectural Engineer
- Consultant Design Team
 - Samaha Associates - Architect
 - Pennoni - Civil Engineer
 - Ehlert Bryan - Structural Engineer
 - Strickler Associates - MEP Engineer

Committee Role

- Review and Provide Feedback of Schematic Design Options
 - Site Access and Traffic Flow
 - Parking Configurations
 - Playfields and Play Areas
 - Prototype Multi-Story Building
- Share
 - Questions
 - Suggestions
 - Concerns
- Liaison with the Community to Foster Engagement

Project Timeline

◆ Schematic Design Phase	4/2022 - 9/2022
Committee Meeting #1	6/9/2022
Committee Meeting #2	9/21/2022
◆ Design Development Phase	9/2022 - 12/2022
◆ Intermediate Design Phase	12/2022 - 3/2023
◆ Final Design Phase	3/2023 - 7/2023
◆ Permit Phase	7/2023 - 4/2024
◆ Construction Start	Spring 2024
◆ Final Completion	Fall 2026

Project Scope

- FCPS Educational Specifications - Modified Criteria
- Demolition
 - Building
 - Parking
- New Building
 - Small Footprint
 - Features for Security and Safety
 - High Performance/Energy Saving
 - Future Expansion
- Site
 - Parking
 - Bus Loop
 - Kiss & Ride Loop
 - Outdoor Playfields and Play Areas
- No Phased Construction

Existing Building and Site



Option Comparison

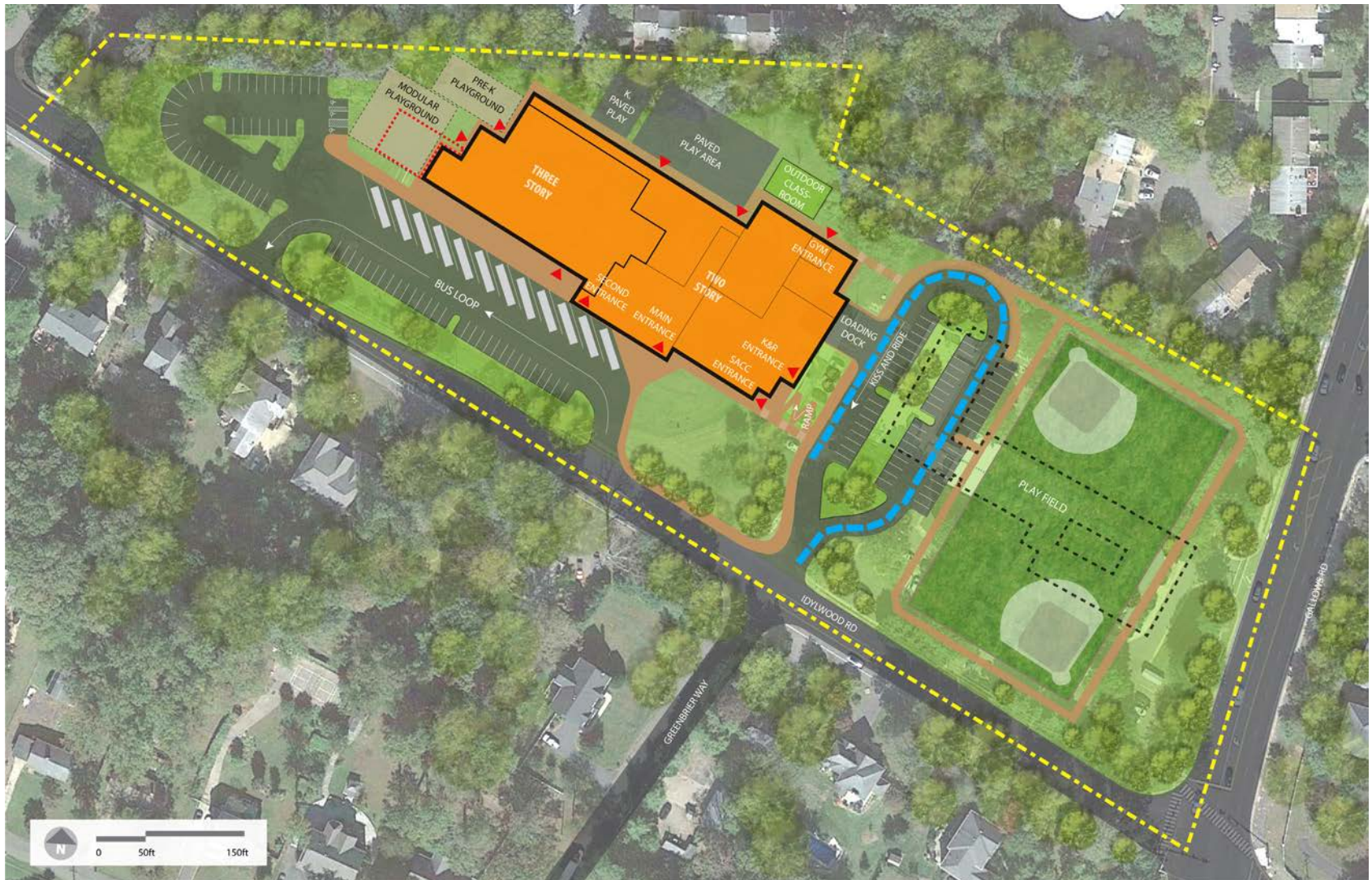


Option 1



Option 2

Design Option 1 - Site Plan



- EXISTING SCHOOL BUILDING
- KISS AND RIDE QUEUING LENGTH
- PROPOSED NEW SCHOOL
- FUTURE EXPANSION

Design Option 1 - 1st Floor



Administrative Suite
Health Services
Food Services

Instructional Library
Special Ed. & Instr. Support
General Learning Area

Art Rooms
Music
Physical Education

SACC / Multipurpose
Building Support

DUNN LORING ES

OPTION 1 - LEVEL 1

Design Option 1 - 2nd Floor



Administrative Suite
Health Services
Food Services

Instructional Library
Special Ed. & Instr. Support
General Learning Area

Art Rooms
Music
Physical Education

SACC / Multipurpose
Building Support

DUNN LORING ES

OPTION 1 - LEVEL 2

Design Option 1 - 3rd Floor



Administrative Suite
Health Services
Food Services

Instructional Library
Special Ed. & Instr. Support
General Learning Area

Art Rooms
Music
Physical Education

SACC / Multipurpose
Building Support

DUNN LORING ES

OPTION 1 - LEVEL 3

Design Option 1 - Aerial View



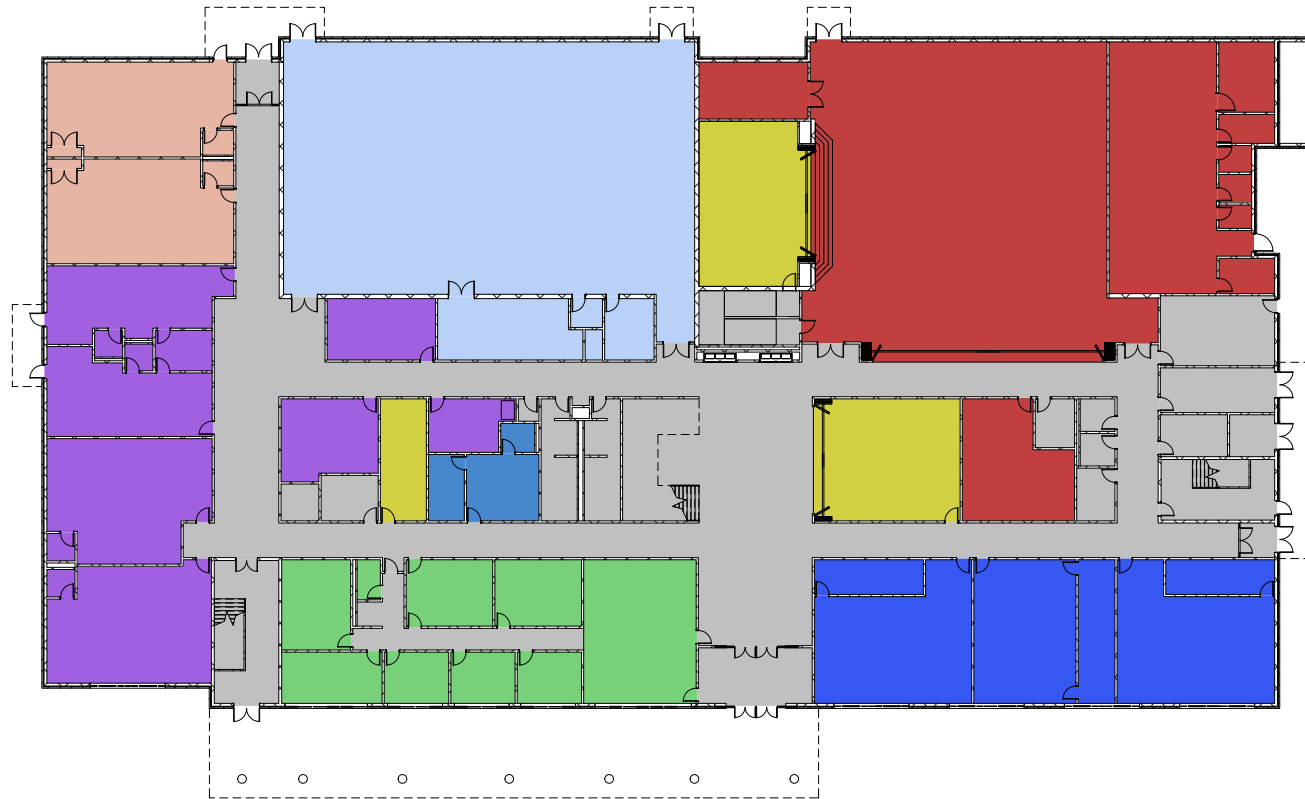
Design Option 2 - Site Plan



- EXISTING SCHOOL BUILDING
- KISS AND RIDE QUEUING LENGTH
- PROPOSED NEW SCHOOL

DUNN LORING ES - OPTION # 2

Design Option 2 - 1st Floor



Administrative Suite
Health Services
Food Services

Instructional Library
Special Ed. & Instr. Support
General Learning Area

Art Rooms
Music
Physical Education

SACC / Multipurpose
Building Support
Cold Dark Shell

DUNN LORING ES

OPTION 2 - LEVEL 1

Design Option 2 - 2nd Floor



Administrative Suite
Health Services
Food Services

Instructional Library
Special Ed. & Instr. Support
General Learning Area

Art Rooms
Music
Physical Education

SACC / Multipurpose
Building Support
Cold Dark Shell

DUNN LORING ES

OPTION 2 - LEVEL 2

Design Option 2 - 3rd Floor



Administrative Suite
Health Services
Food Services

Instructional Library
Special Ed. & Instr. Support
General Learning Area

Art Rooms
Music
Physical Education

SACC / Multipurpose
Building Support
Cold Dark Shell

DUNN LORING ES

OPTION 2 - LEVEL 3

Design Option 2 - 4th Floor



Administrative Suite
Health Services
Food Services

Instructional Library
Special Ed. & Instr. Support
General Learning Area

Art Rooms
Music
Physical Education

SACC / Multipurpose
Building Support
Cold Dark Shell

DUNN LORING ES

OPTION 2 - LEVEL 4

Design Option 2 - Aerial View



Thank you!

QUESTIONS?



www.fcps.edu



SAMAHA