

# DUNN LORING ELEMENTARY SCHOOL

## COMMUNITY MEETING



NOVEMBER 10, 2022

# Team Introduction

- FCPS Design and Construction
  - Bradley James - Coordinator
  - Subhash Gambhir - Architectural Engineer
- Consultant Design Team
  - Samaha Associates - Architect
  - Pennoni - Civil Engineer
  - Ehlert Bryan - Structural Engineer
  - Strickler Associates - MEP Engineer

# Community Role

- Review and Provide Feedback of Schematic Design Options
  - Site Access and Traffic Flow
  - Parking Configurations
  - Playfields and Play Areas
  - Prototype Multi-Story Building
- Share
  - Questions
  - Suggestions
  - Concerns

# Project Timeline

- ◆ Design Phase Spring 2022 - Spring 2024
  - Design Feedback and Engagement Committee Meeting #1 6/9/2022
  - Design Feedback and Engagement Committee Meeting #2 9/21/2022
  - Community Meeting 11/10/2022
- ◆ Construction Phase Spring 2024 - Fall 2026

# Project Scope

- FCPS Educational Specifications
- Demolition
  - Building
  - Parking
- New Building
  - Small Footprint
  - Features for Security and Safety
  - High Performance/Energy Saving
  - Future Expansion
- Site
  - Parking
  - Bus Loop
  - Kiss & Ride Loop
  - Outdoor Playfields and Play Areas
- No Phased Construction

# Existing Building and Site



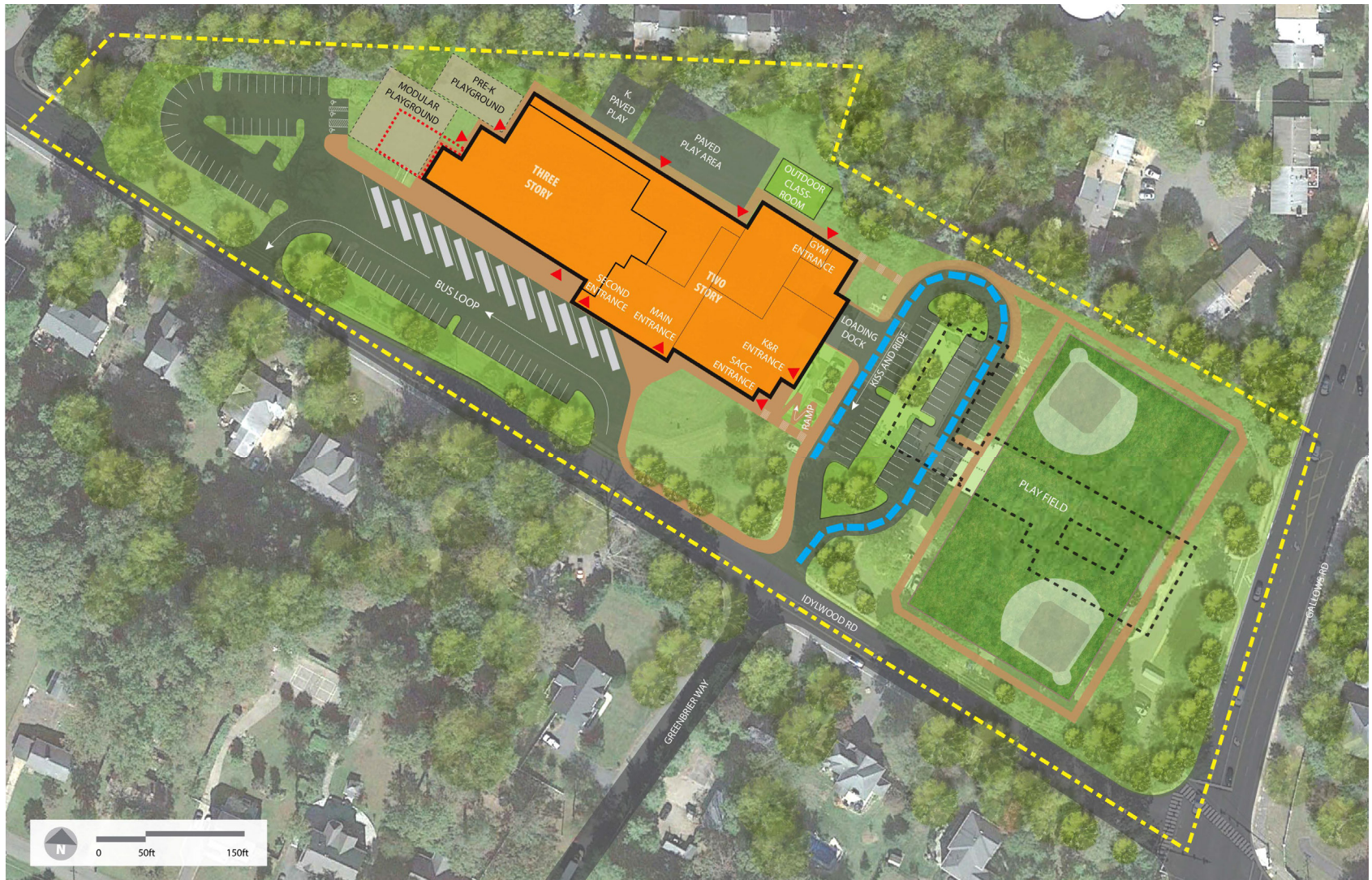
# Design Option 1 - Site Plan



- EXISTING SCHOOL BUILDING
- KISS AND RIDE DISEMBARKING AREA
- PROPOSED NEW SCHOOL.

DUNN LORING ES - OPTION # 1

# Design Option 2 - Site Plan



- EXISTING SCHOOL BUILDING
- KISS AND RIDE QUEUING LENGTH
- PROPOSED NEW SCHOOL
- FUTURE EXPANSION

# Design Option 2 - 1st Floor



Administrative Suite  
Health Services  
Food Services

Instructional Library  
Special Ed. & Instr. Support  
General Learning Area

Art Rooms  
Music  
Physical Education

SACC / Multipurpose  
Building Support

# Design Option 2 - 2nd Floor



Administrative Suite  
Health Services  
Food Services

Instructional Library  
Special Ed. & Instr. Support  
General Learning Area

Art Rooms  
Music  
Physical Education

SACC / Multipurpose  
Building Support

DUNN LORING ES

OPTION 2 - LEVEL 2

# Design Option 2 - 3rd Floor



Administrative Suite  
Health Services  
Food Services

Instructional Library  
Special Ed. & Instr. Support  
General Learning Area

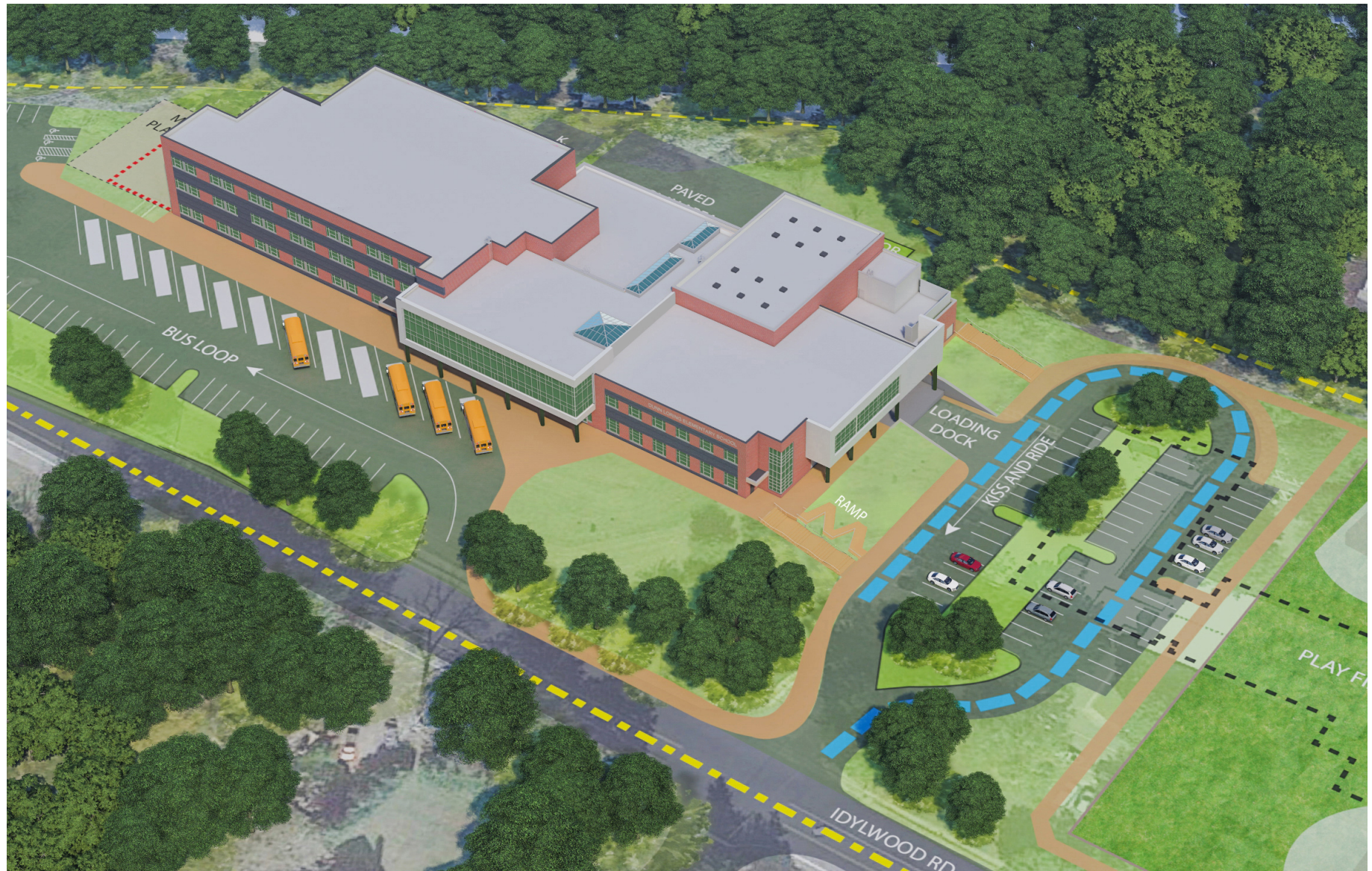
Art Rooms  
Music  
Physical Education

SACC / Multipurpose  
Building Support

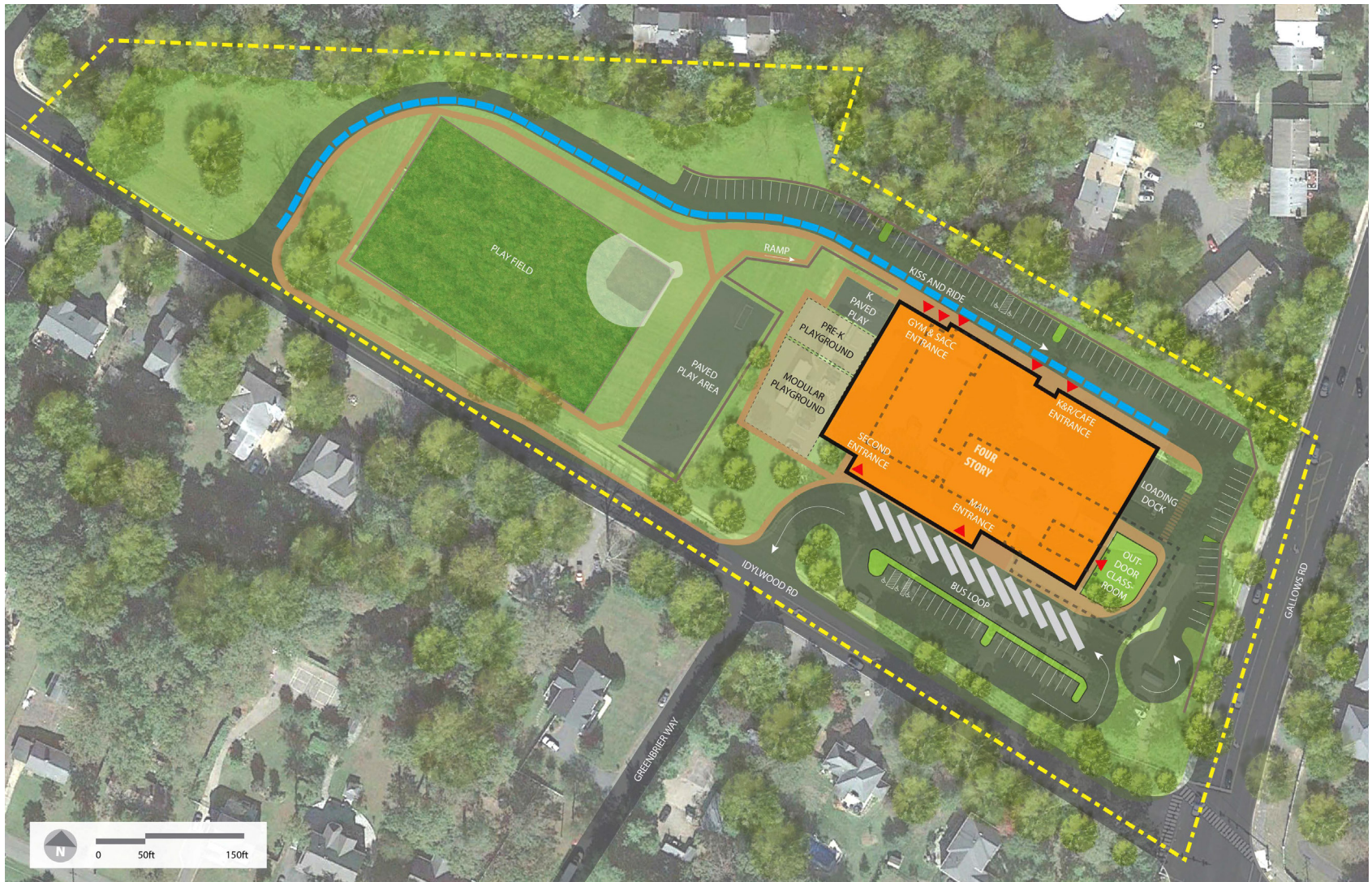
DUNN LORING ES

OPTION 2 - LEVEL 3

# Design Option 2 - Aerial View



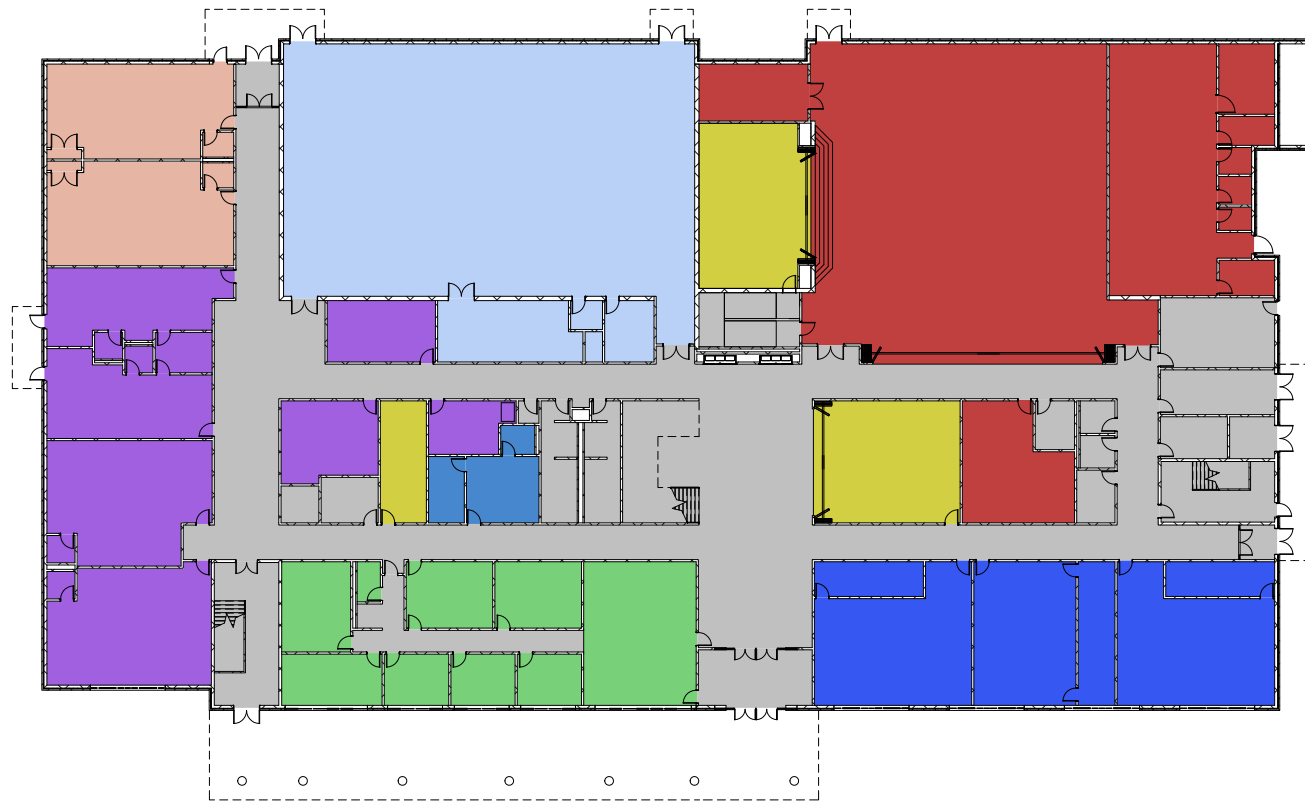
# Design Option 3 - Site Plan



- EXISTING SCHOOL BUILDING
- KISS AND RIDE QUEUING LENGTH
- PROPOSED NEW SCHOOL

DUNN LORING ES - OPTION # 3

# Design Option 3 - 1st Floor



Administrative Suite  
Health Services  
Food Services

Instructional Library  
Special Ed. & Instr. Support  
General Learning Area

Art Rooms  
Music  
Physical Education

SACC / Mutipurpose  
Building Support  
Cold Dark Shell

# Design Option 3 - 2nd Floor



Administrative Suite  
Health Services  
Food Services

Instructional Library  
Special Ed. & Instr. Support  
General Learning Area

Art Rooms  
Music  
Physical Education

SACC / Mutipurpose  
Building Support  
Cold Dark Shell

DUNN LORING ES

OPTION 3 - LEVEL 2

# Design Option 3 - 3rd Floor



Administrative Suite  
Health Services  
Food Services

Instructional Library  
Special Ed. & Instr. Support  
General Learning Area

Art Rooms  
Music  
Physical Education

SACC / Multipurpose  
Building Support  
Cold Dark Shell

DUNN LORING ES

OPTION 3 - LEVEL 3

# Design Option 3 - 4th Floor



Administrative Suite  
Health Services  
Food Services

Instructional Library  
Special Ed. & Instr. Support  
General Learning Area

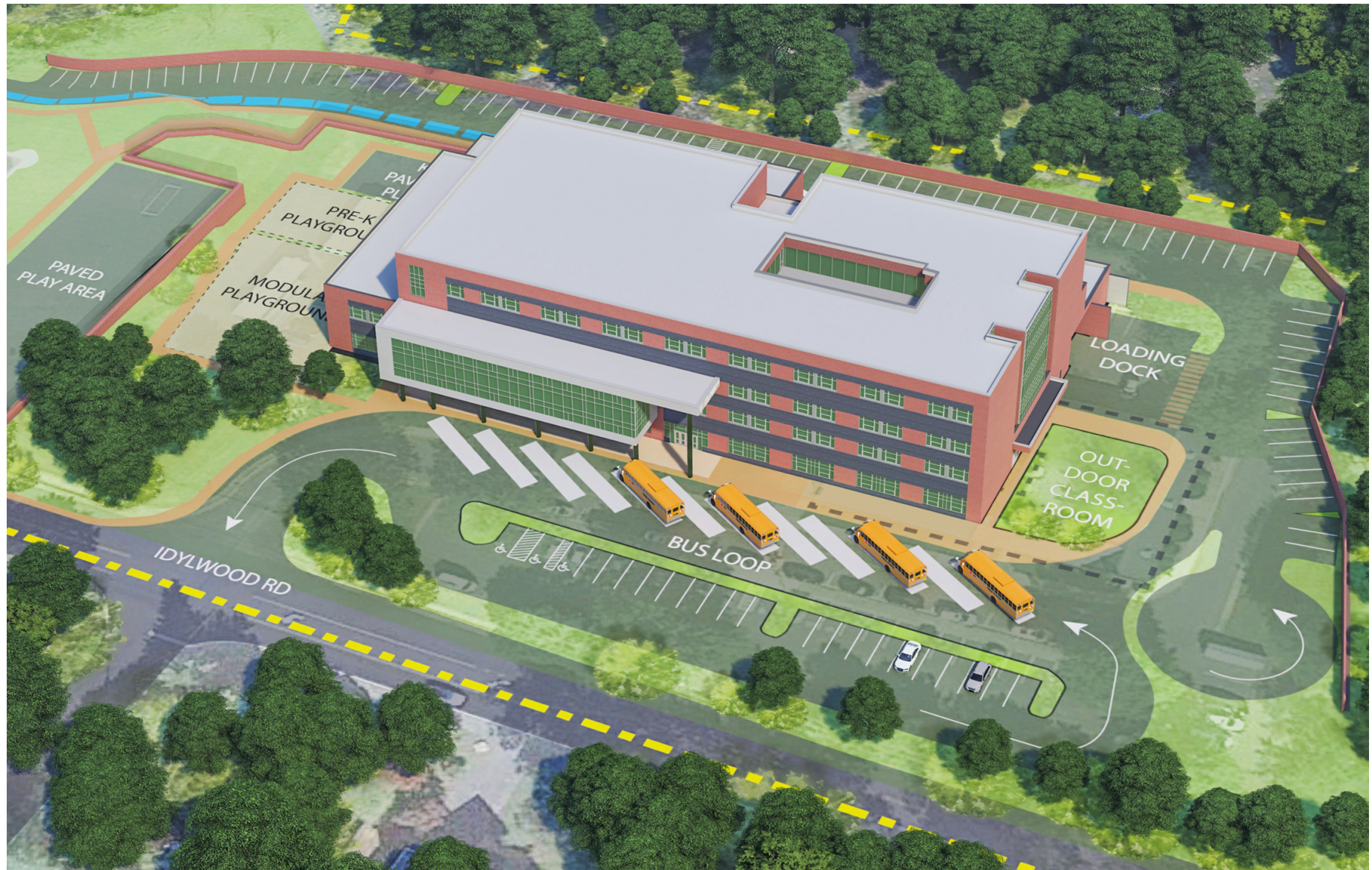
Art Rooms  
Music  
Physical Education

SACC / Multipurpose  
Building Support  
Cold Dark Shell

DUNN LORING ES

OPTION 3 - LEVEL 4

# Design Option 3 - Aerial View



# Thank you!

## Questions?



For Project Updates, Email Sign Up and Additional Feedback Opportunities

[www.fcps.edu](http://www.fcps.edu)

Search for “Dunn Loring Capital Project”



SAMAHA