

CENTREVILLE HIGH SCHOOL DESIGN COMMITTEE MEETING



JUNE 08, 2022

Team Introduction

- FCPS Design and Construction
 - Vince Santmyer – Coordinator
 - Jeff Haidacher – Architect

- Consultant Design Team
 - Stantec Architecture – Architect
 - Pennoni – Civil Engineer
 - Linton Engineering – Structural Engineer
 - Ascent Engineering Group – MEP Engineer



Design Committee Role

- Presentation and Review of Preliminary Design Direction
 - Existing Condition
 - Areas of Addition
 - Areas of Renovation
 - Parking Configurations
 - Site Access and Traffic Flow
- Questions
- Suggestions
- Concerns
- Liaison with the Community

Project Timeline

- ❖ Schematic Design Phase 03/2022-09/2022
 - Design Committee Meeting #1 6/08/2022
 - Design Committee Meeting #2 09/2022
- ❖ Design Development Phase 09/2022-02/2023
 - Design Committee Meeting #3 02/2023
- ❖ Intermediate Design Phase 02/2023-10/2023
- ❖ Final Design Phase 10/2023-04/2024
- ❖ Permit Phase 04/2024-04/2025
- ❖ Construction Start 12/2025
- ❖ Final Completion 07/2029

Project Scope

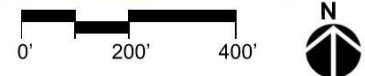
- FCPS Educational Specifications – Modified Criteria for 3000 Students
- Additions
 - Classrooms
 - Admin & Secure Vestibule
 - Performing Arts
 - Health & PE
 - Library
- Renovations
 - Reconfigured and Renewed Classrooms
 - Reconfigured and Renewed Support Spaces
 - New Mechanical, Electrical, and Plumbing Systems
 - Reconfigured Site Circulation
 - Reconfigured Ball Fields & Site Facilities
- Occupied Phased Construction

Site Plan: Existing

ZONING:
R-C RESIDENTIAL CONSERVATION DISTRICT
BUILDING HEIGHT: 60'-0" MAX.
FRONT SETBACK: 49'-0" TO 67'-0"
SIDE SETBACK: EQUAL TO BUILDING HEIGHT
REAR SETBACK: EQUAL TO BUILDING HEIGHT
FAR: 15% MAX.



EXISTING CONDITIONS

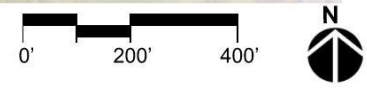


Site Plan: Existing

ZONING:
R-C RESIDENTIAL CONSERVATION DISTRICT
BUILDING HEIGHT: 60'-0" MAX.
FRONT SETBACK: 49'-0" TO 67'-0"
SIDE SETBACK: EQUAL TO BUILDING HEIGHT
REAR SETBACK: EQUAL TO BUILDING HEIGHT
FAR: 15% MAX.



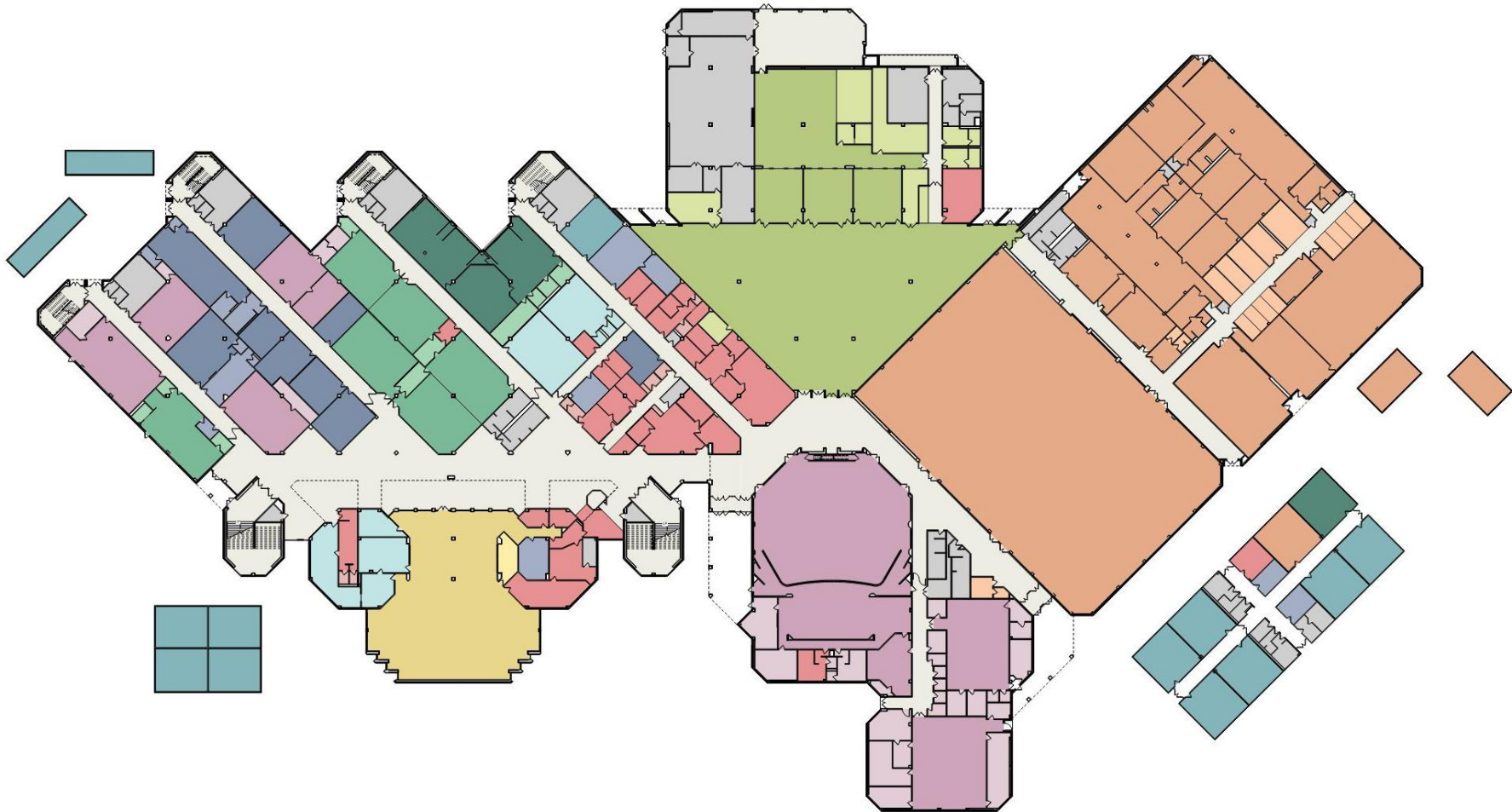
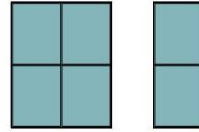
SUN, TOPOGRAPHY



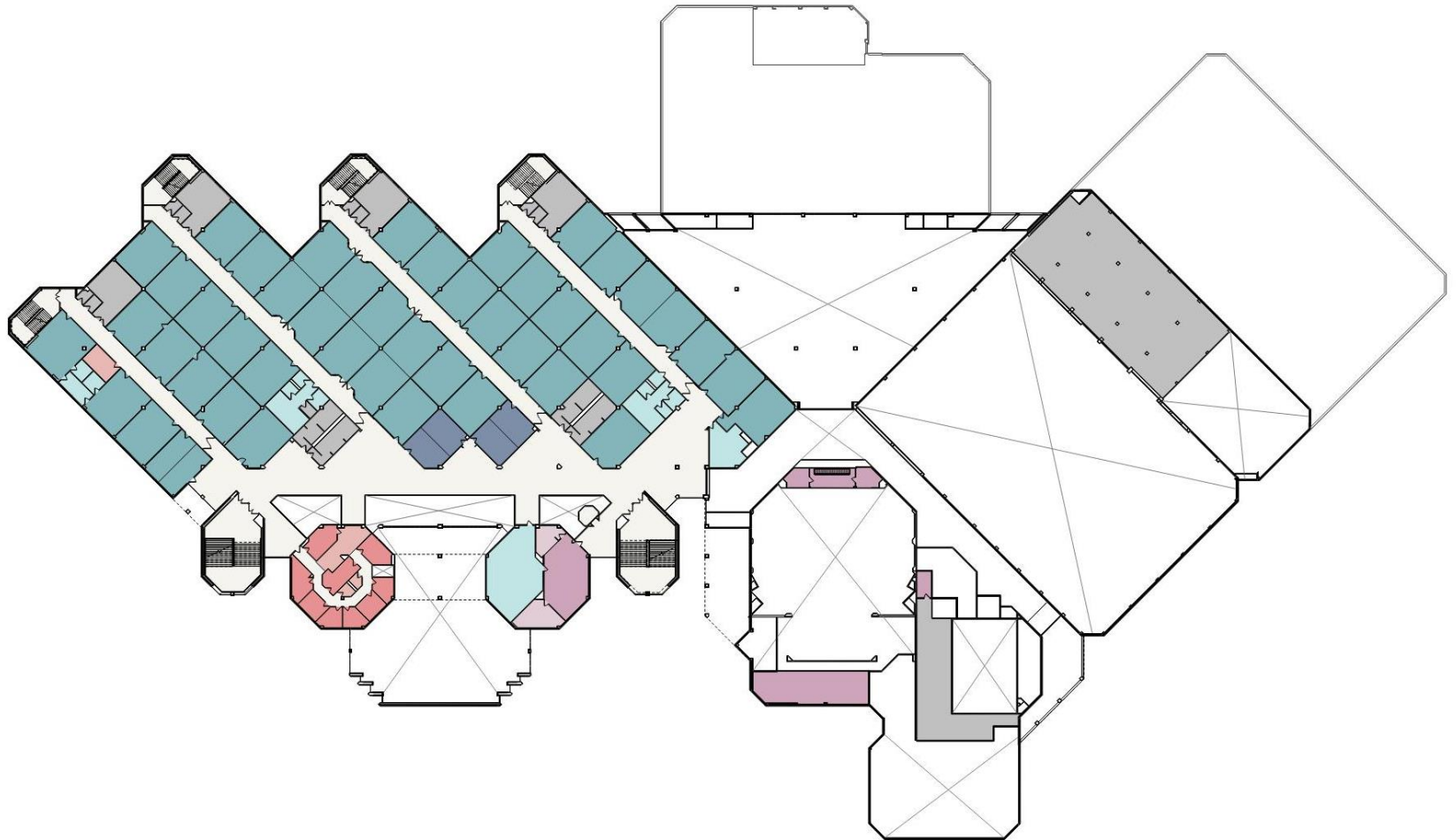
Site Plan: Opportunities and Constraints



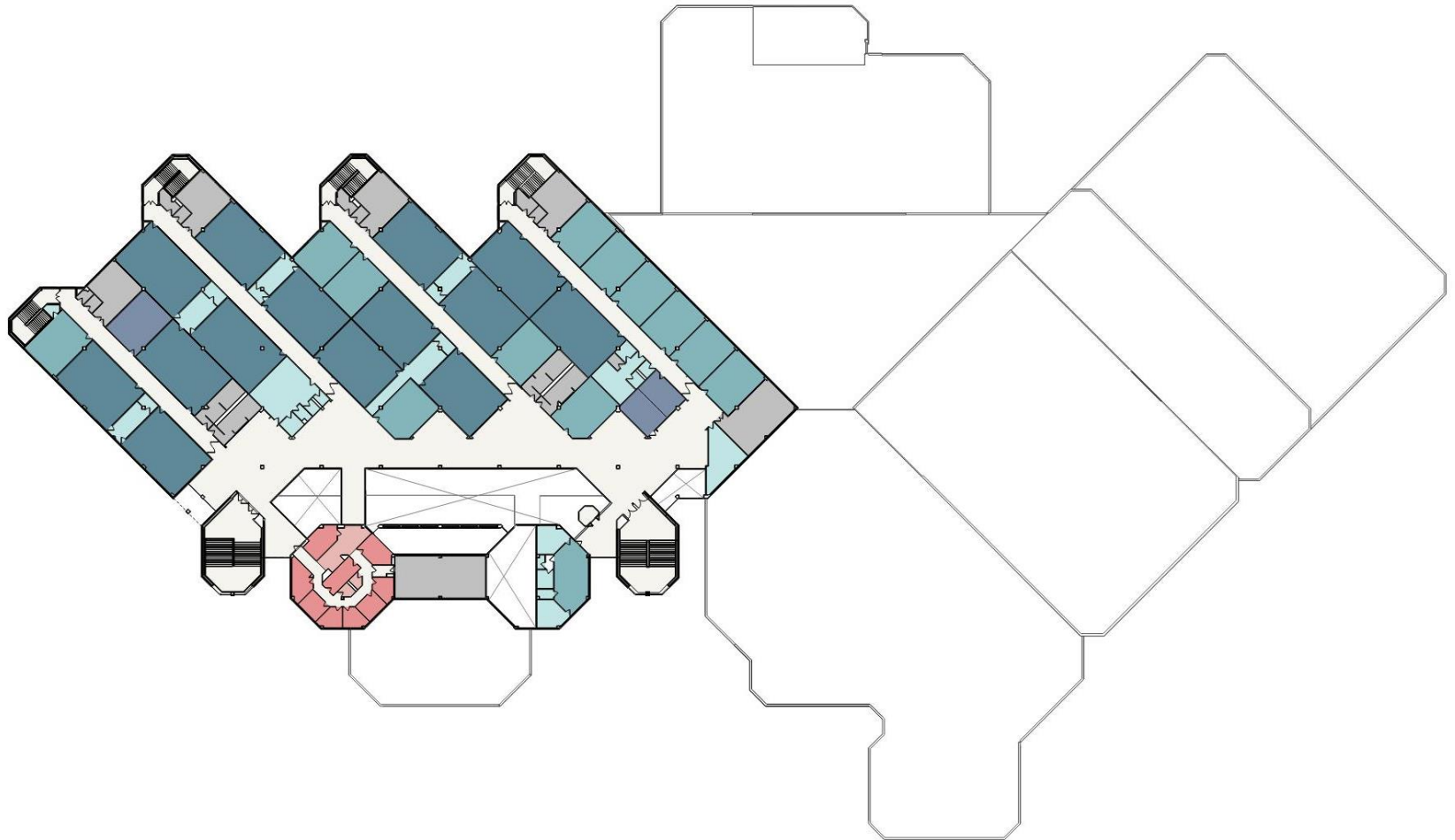
1st Floor Plan – Existing



2nd Floor Plan – Existing



3rd Floor Plan – Existing



Programming Analysis and Direction:

- Increase quantity and size of spaces as most are under FCPS Ed Spec for a High School. This includes not only core academic spaces, but also support spaces such as storage and staff workrooms/offices
- Provide better access to windows and daylight
- Improve building circulation to ease congestion and improve connection between classroom corridors as well as to PE area
- Create a design that allows for grouping of departments, as well as adjacencies that foster collaboration between departments
- Improve safety & security, including a secure vestibule
- Upgrade all building systems and interior finishes to make entire building feel new and cohesive with the additions
- Improve site circulation and function of ball fields

Thank you!

QUESTIONS?



Fairfax County
PUBLIC SCHOOLS
ENGAGE • INSPIRE • THRIVE

www.fcps.edu