

# JUSTICE HIGH SCHOOL ADDITION UPDATE



MARCH 7, 2023

Community Meeting

# Team Introduction



## FCPS Design & Construction

- Najib Hameed – Coordinator
- Adam Roberts – Construction Manager



## General Contractor

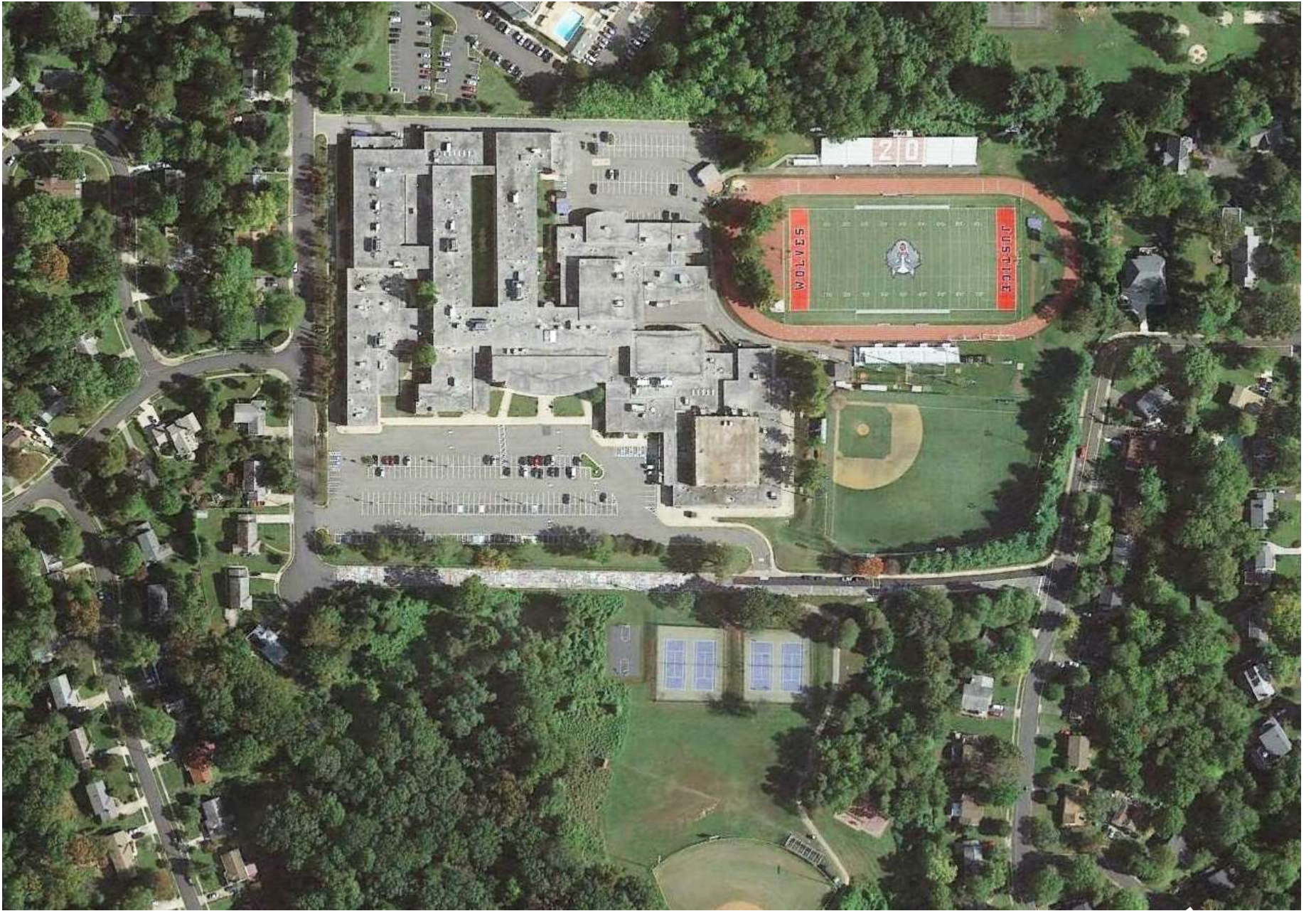
- Henley Construction Co., Inc.

## Consultant Team



- Hughes Group Architects – Architect of Record
- LandDesign – Civil Engineer
- Ehlert Bryan – Structural Engineer
- Strickler Associates – MEP Engineer





# Project Scope

- Cafeteria expansion (approx. 1,800 square feet)
- 3-story Addition to existing school (approx. 43,400 square feet)
  - Core classrooms
  - Science labs
  - Modeling and tech lab spaces
  - Special education spaces

# Project Funding

- Planning/Design – 2017 School Bond
- Construction – 2019 School Bond
- Total Project Estimate - \$31 Million

## Project Timeline

- January 2023 – Bid Opening
- February 2023 – Project Award
- Spring 2023 – Construction Start
- Spring 2025 – Project Completion



# Site Plan

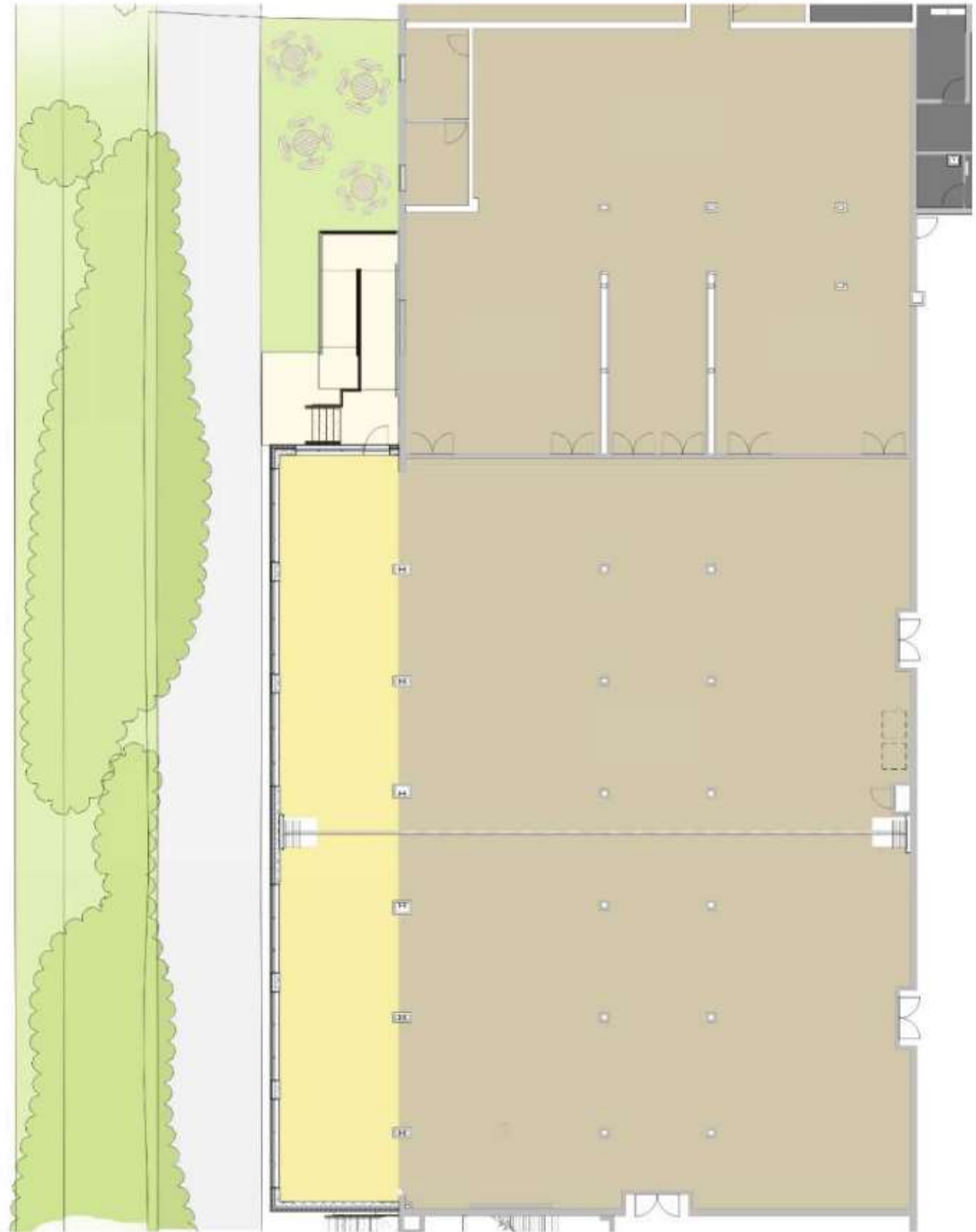


- 1. EXISTING BUILDING (306,667 GSF)
- 2. 3-STORY CLASSROOM ADDITION (45,218 GSF)
- 3. 1-STORY CAFETERIA EXPANSION (2,004 GSF)
- 4. UNDERGROUND STORMWATER FACILITY
- 5. EXISTING PARKING
- 6. PROPOSED PARKING
  - a. Classroom Addition Parking
  - b. Restriping of main parking lot
  - c. Parallel parking on Peace Valley Lane
  - d. Additional parking near entrance to lot
- 7. PROPOSED SIDEWALK
- 8. EXISTING JUSTICE PARK TO REMAIN AS IS



# Cafeteria Addition

EXISTING CAFETERIA	7,703 GSF
CAFETERIA EXPANSION	1,818 GSF
<b>TOTAL CAFETERIA</b>	<b>9,521 GSF</b>



# Cafeteria Addition - Elevation



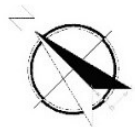
West Elevation



# Classroom Addition - First Floor Plan



# Classroom Addition - Second Floor Plan



# Classroom Addition - Third Floor Plan





# Classroom Addition - Elevations

## Materials

- Brick
- Metal Panels
- Glass

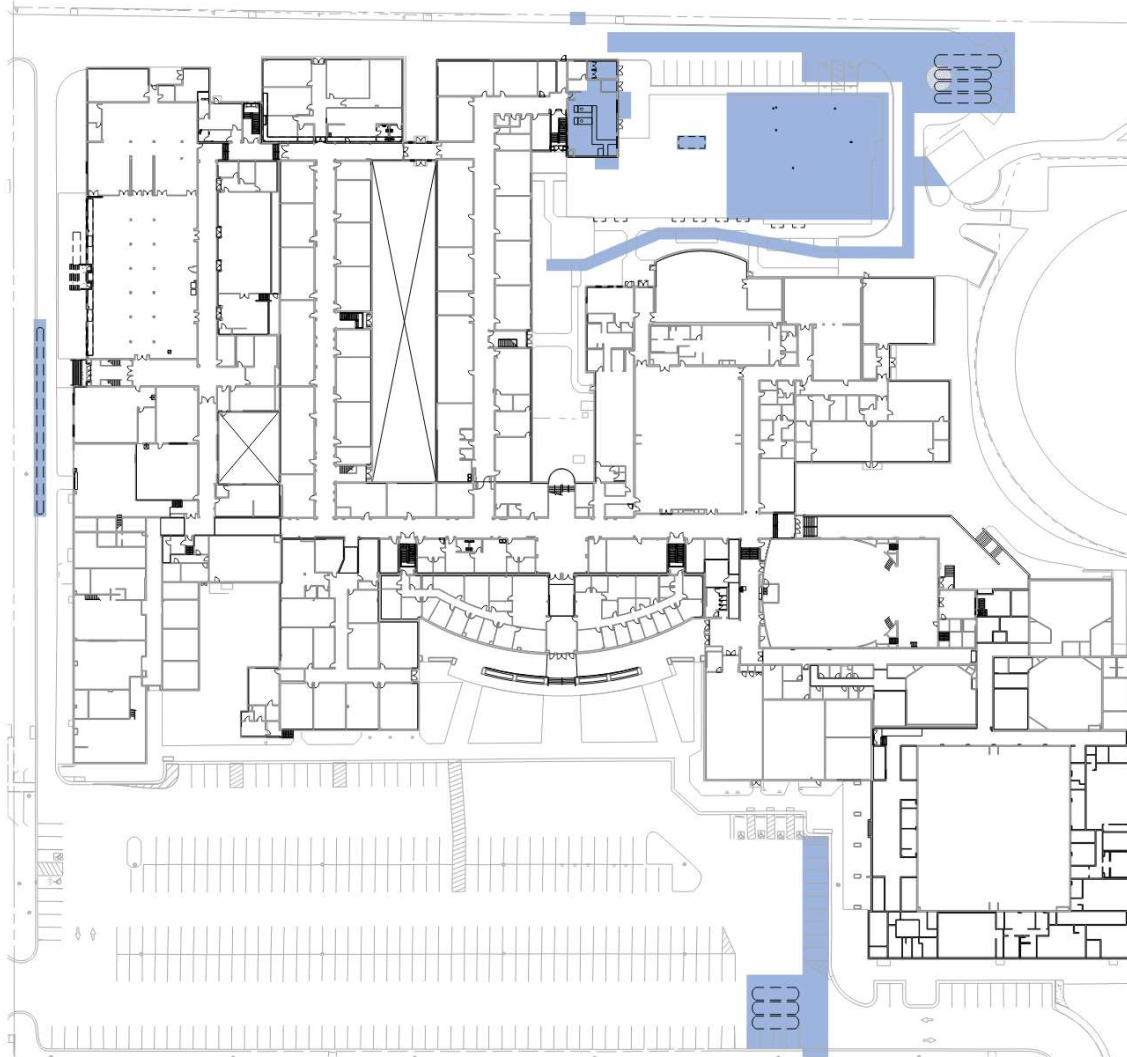


East Elevation



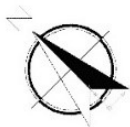
North Elevation

# PHASING PLAN – PHASE 1

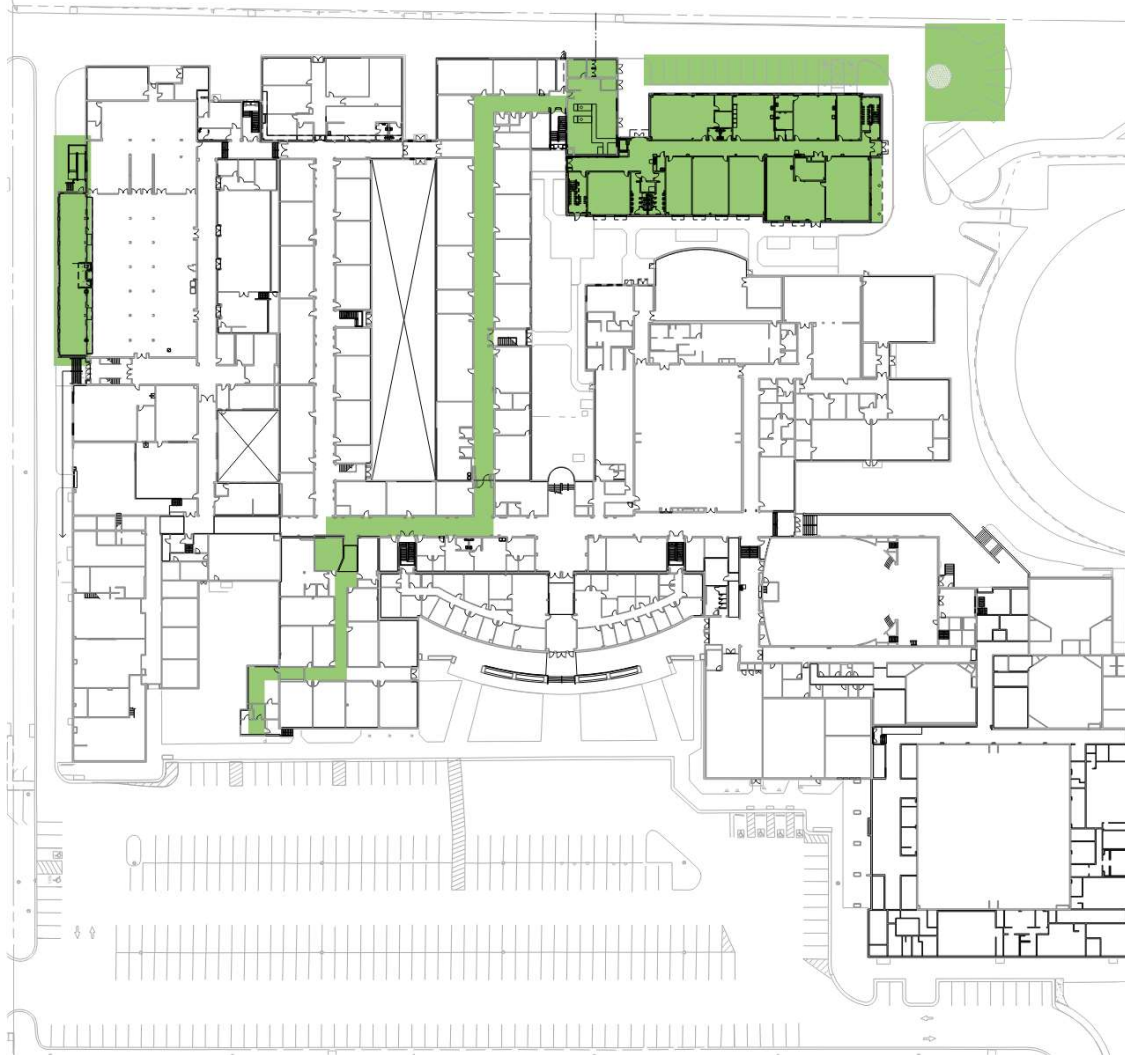


## SPRING 2023 – SUMMER 2023

- ESTABLISH & MAINTAIN SITE CIRCULATION
- ESTABLISH & MAINTAIN LAY-DOWN AREA
- NEW STORMWATER MANAGEMENT FACILITIES
- PEACE VALLEY LANE SIDEWALK
- PARKING LOT IMPROVEMENTS

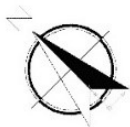


# PHASING PLAN – PHASE 2



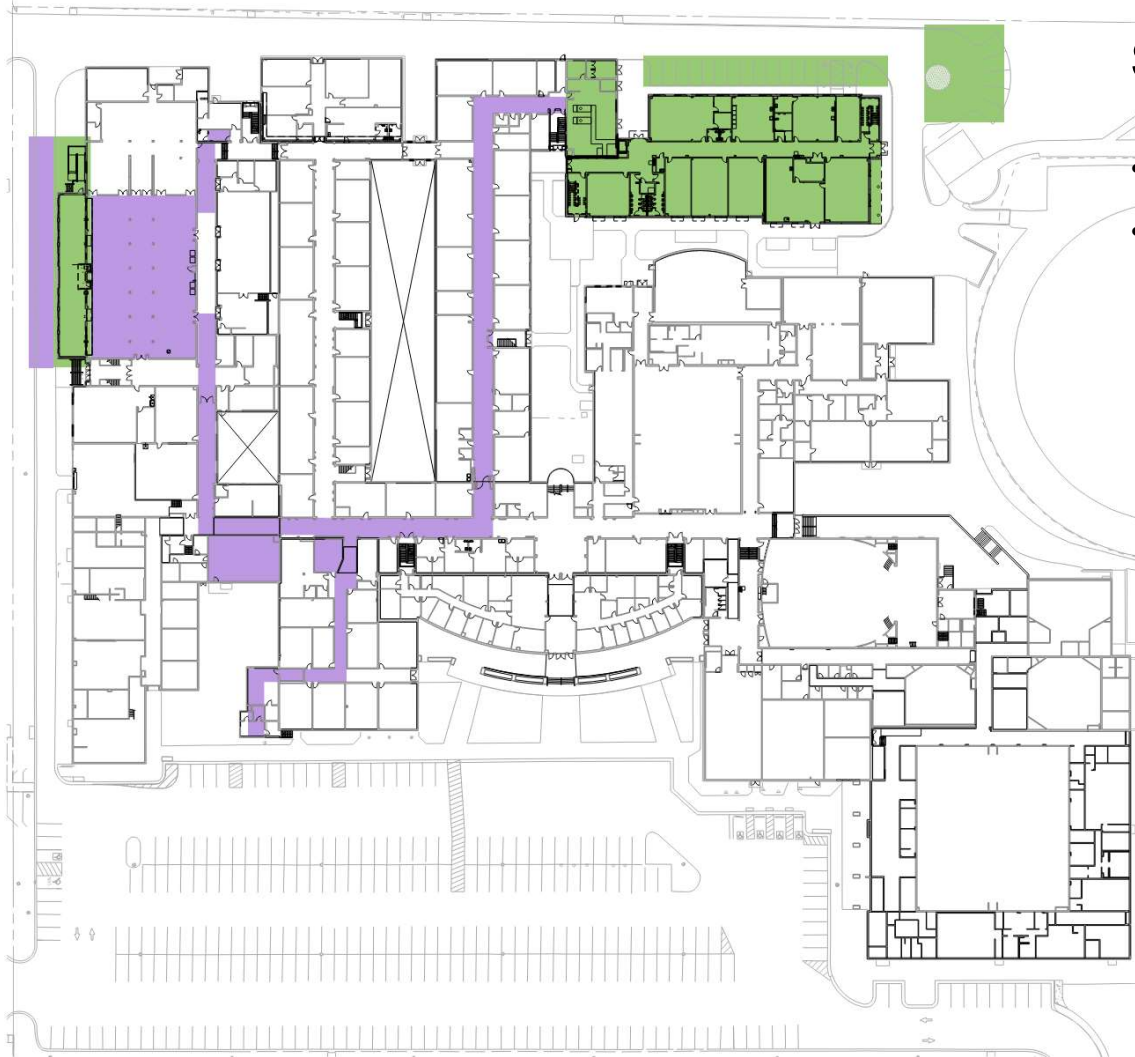
## SUMMER 2023 – WINTER 2025

- CAFETERIA ADDITION
- 3-STORY ADDITION
- EXISTING/NEW UTILITY TIE-INS





# PHASING PLAN – PHASE 3 (S1)



## SUMMER 2023

- CAFETERIA RENOVATION
- EXISTING/NEW UTILITY TIE-INS

# PHASING PLAN – PHASE 4



## SUMMER 2024 – WINTER 2025

- ESTABLISH & MAINTAIN VEHICULAR/PEDESTRIAN CIRCULATION
- NEW COMMON AREA ADDITION
- EXISTING/NEW UTILITY TIE-INS
- ASPHALT PAVING, CURB/GUTTER
- LANDSCAPE/HARDSCAPE
- STRIPING & SIGNAGE

# Addition – Exterior Rendering





# SAFETY

- Student/staff safety is priority
- Mobile safety team that travels from site-to-site
- Inspect for compliance with OSHA, Fire Code, and general occupant safety.
- Reports generated and given to FCPS project team and contractor for compliance.
- Air quality checks when construction impacts occupied areas in the school to include temperature, carbon monoxide, dust, odors, etc.
- Most issues can be addressed within 24 hours.



# THANK YOU!

FOR MORE INFORMATION, GO TO [www.fcps.edu](http://www.fcps.edu) and  
SEARCH FOR JUSTICE HIGH SCHOOL CAPITAL PROJECT

OR

<https://www.fcps.edu/justice-high-capital-project>

