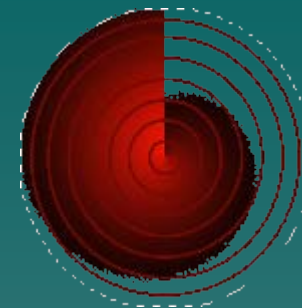


The “SLIDE” Committee Report

1. Recommendation
2. What we considered
3. Areas of concern as we move forward



The “SLIDE”



It has disappeared from our radar screen.

Gone, good-bye, so long, farewell

- ◆ Like the 1998 committee, our committee could not come up with the slightest of reasonable justifications which would make the “Slide” practical. In fact, we found many reasons why it simply will not work.

Our Executive Summary

Conclusion:

The “Slide” is not feasible without significant funding increases, or significant funding cuts from the “optional” transportation services being offered today for every special request

We considered...

- ◆ The ideal start time for high school students: **We concluded – 8:00**
- ◆ Reality of what we might be able to accomplish, with significant dollars: **possibly 7:45**
- ◆ Sliding High School bells 25 minutes, and Elementary Schools bells no more than 10 minutes
 - Why only 10 minutes for ES:
 - ◆ We drew on the 1998 report – any time later is unacceptable
 - ◆ Anymore time goes beyond “civil twilight”
 - ◆ > 10 minutes: Impact on SACC
 - ◆ > 10 minutes: Impact on Staff – in particular in the morning
 - See Elementary Schools below

Sliding back the High School bell schedule

- ◆ Positive impacts of “Sliding” the bell schedule back: (and they are not quantifiable);
 - Beneficial sleep time
 - Students may be more productive because they are more aware (very subjective).
 - Students may be more involved in school activities, however, they are just as likely to become disengaged in the current activity
 - Academics may improve, however, there are no studies or documentation to sustain this argument
 - Parents may be more involved in activities.
 - Minimal effect on ES bell schedule **only with additional buses**
 - In general, the committee could come up with no significant, sustainable positives for moving the ES bell schedule later in the day. If a slight adjustment was necessary, we could not justify more than 10 minutes.

Moving back the High School bell schedule

- ◆ Regarding High Schools (HS), if HS were to SLIDE back 25 minutes, the following negative impact would be observed:
 - Teachers would still leave their homes at the same time to avoid traffic, extending their day; **what are the costs?**
 - With an extended teacher's day, they will be **less likely to sponsor/coach** after school activities
 - As a result of the above 2 items, teachers will **look for employment** in other counties, closer to home
 - Will have an impact on extra-curricular activities
 - ◆ Activities are an important part of the scholastic educational experience, whether sports or clubs or bands
 - ◆ **Negative impact on the marginal student** that needs extra help and wants to, or needs to, remain in EC activities
 - ◆ **After school activities would start later** — which would have an impact on *after school* bus runs (students who already have to wait an average of 45 min. would most likely have to wait longer)
 - Moving HS time back more than 15 minutes will significantly disrupt **scholastic swimming** without other pools being identified
 - Community after school activities would need to start later

- Activities finishing later would put **students home later**, potentially impacting homework time or bed time
- Teams will have to leave school **prior to dismissal** for away games
- Longer travel times for games (starting to run in to rush hour)
- HS teams & clubs that practice at ES would **impact the gym and field usage** for the Community Use and the SACC program (already limited by community programs which start at 5 p.m.; and limited daylight hours in the fall/winter)
- Someone will have to go: use of the pool, gym, or field time
- The school day would have to be reduced for a portion of the athletes
- Later after school activities would put new drivers on the road during evening rush hour

- There would be an impact on students who work and their employers
- Athletics and clubs would be tempted to change their practice/meeting times to the early morning – defeating the reason for sliding the schedule back
- Thomas Jefferson's schedule was reviewed. It was notable that most of their sports teams have an early release from classes for games. It is believed this would not be acceptable on a County wide basis.

Moving back the Elementary School bell schedule

- ◆ The committee discussed the impact on Elementary Schools (ES)
 - The committee could come up with no positives for moving the Elementary bell schedule later in the day
 - If a slight adjustment was necessary, we could not justify more than 10 minutes
- ◆ If the Elementary Schools were to SLIDE, the following **negative impacts** would be observed:
 - would create significant need for additional child care in the mornings before school (children are already arriving before school starts, creating additional supervision needs)
 - most typical jobs start between 8 – 9, employees arriving later would greatly impact employers
 - children would most likely be in day-care longer
 - teachers would still leave their homes at the same time to avoid traffic, extending their day

- Children would most likely need to be in care longer (AM)
- Children may be walking home from school or the bus stop in rush hour
- Children may be walking home from school or the bus stop in the dark
- Longer travel times for ES students who take the bus or do Kiss n Ride due to travel during beginning of rush hour
- Would impact the gym and field usage for the SACC program (already limited by rec programs which start at 5 p.m. and limited daylight hours in the fall/winter)
- After school community activities would have to start later
- Homework time, dinner time and bed time would all be pushed back
- Buses would have even more difficulty getting back to HS for after school activity pick up due to travel during rush hour
- May create the need for overtime for custodial staff, or may lessen custodial lunch coverage.

Additional areas the Slide committee reviewed:

- ◆ Impact on early morning activities
- ◆ Desire to establish earliest pick up time (98)
- ◆ Establishing the maximum longest duration of a bus ride
- ◆ Sliding only the HS schedule – significant cost (+/- \$42M)
- ◆ Boundary changes may allow for transportation efficiencies, but are not politically viable
- ◆ Bus routes have already been consolidated
- ◆ Sleep deprivation: Would kids go to bed at the same time or push it back as well?
- ◆ Professional Development: A change in schedule would have little or no impact on professional development as most of this takes place on teachers workdays (in-service)
- ◆ Traffic Impact: The travel time for the school's staff must be taken into account. Later afternoon times are going to push that travel back into the evening rush-hour
- ◆ In a "slide", we considered the lunch schedule and when students would be eating. Some ES students would not be eating until 1:30-2:00
- ◆ Impact on free breakfasts at some schools
- ◆ Later start for community activities for ES students; some may choose not to participate in activities

- ◆ A general slide **will not** benefit everyone; it will have some negative impact on everyone, more for some than others
- ◆ We could not find a comprehensive study that showed quantifiable benefits as measured through test scores and/or GPA to moving from the current schedule, and nothing showing the impact on Elementary students. It is believed a shift in the HS bell schedule may be beneficial, however, even the Arlington reports can point to NO increase in test scores. All other systems that changed are significantly smaller than in Fairfax County.

Summarily, a “SLIDE” can not survive the attacks that would come from 360°. Few pro’s – many cons

Thus, the infamous idea of the
“SLIDE” went.....



PERFECTION SHOULD NOT STAND
IN THE WAY OF PROGRESS

