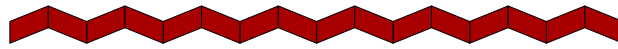




# CLASSROOM TRAILERS



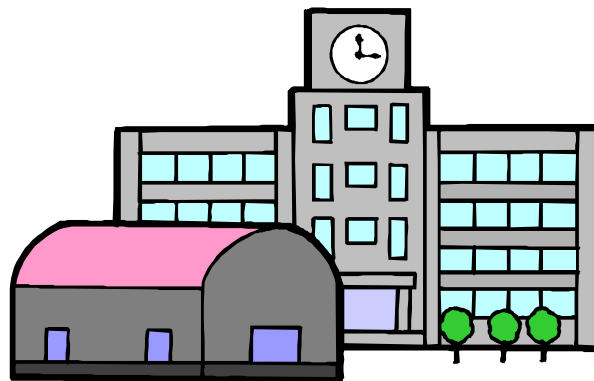
## Safety & Security Fact Sheet

### TEACHERS

- ✓ All trailers in FCPS are connected to the main building's security alarm system. Teachers assigned to trailers should make certain that the alarm system has been turned OFF in the school BEFORE entering the trailer.
- ✓ Close blinds and curtains at the end of the school day. This acts as a deterrent to someone looking for expensive equipment to steal.
- ✓ Remind students to use the handrail while climbing the steps.
- ✓ It is strongly suggested that the door be kept locked while classes are in session.

### CUSTODIANS

- ✓ Every classroom trailer must have a fully charged fire extinguisher. Custodians must check the extinguishers every month. Maintenance personnel must inspect all extinguishers annually.
- ✓ During the winter months, have sand or some type of ice melting material handy for spreading on snow and ice along the gravel walkways and wooden steps leading to the trailer entrance.
- ✓ Regularly replenish gravel on the paths leading to the trailer.
- ✓ Routinely inspect the wooden steps for loose boards and splinters. Submit a maintenance work order for any defects found.



If you need assistance, call the security section at 571-423-2000.