

SCHOOL BOARD WORK SESSION

REVISED 7-11-07

Date July 16, 2007

After reviewing this agenda item, board members are requested to e-mail any questions or issues about this agenda item to the staff contact person listed below prior to the work session. Those issues and questions will be used as the framework for the staff presentation at the board work session.

Agenda Item: West County High School and Springfield Estates/Forestdale Boundary Studies

Staff Contact: Dean Tistadt, Chief Operating Officer

Background: Currently there are significant enrollment and capacity imbalances among high schools in the western portion of the county. Community members have expressed concern over the impact these imbalances have on programs and extra curricular activities. The School Board has directed staff to conduct a high school boundary study to address these concerns.

Likewise, enrollment and capacity considerations suggest consideration of a boundary change that would remove the attendance area island and reduce enrollment at Springfield Estates Elementary. Space provided by the new modular addition at Forestdale Elementary School could be used to address this issue.

Key Issues: The scope of the west county study must to be determined. The School Board needs to determine which schools will be included in the study and the primary considerations/objectives for the study.

School Board Discussion/Decision: Review the list of schools recommended for inclusion in the studies and the recommended considerations.

Staff Recommendation: Staff recommends the following high school attendance areas be included in the west county study;

Chantilly High
Herndon High
Oakton High
South Lakes High
Westfield High

In addition staff recommends a limited study be conducted for Madison High, Thoreau Middle, and Wolftrap Elementary focused on reassigning the attendance area “island” north of the Dulles Access Road from these schools to South Lakes High, Hughes Middle, and Sunrise Valley Elementary.

Staff recommends the considerations identified in the attached “Primary Considerations for the West County High School Boundary Study” be adopted for this study.

Staff also recommends a study of the Springfield Estates and Forestdale Elementary School boundaries be conducted to eliminate the attendance area “island” and reduce enrollment at Springfield Estates.

Options: Modify the recommended list of schools to be included in studies and/or the list of primary considerations.

Attachments: List of Primary Considerations for the West County High School Boundary Study.

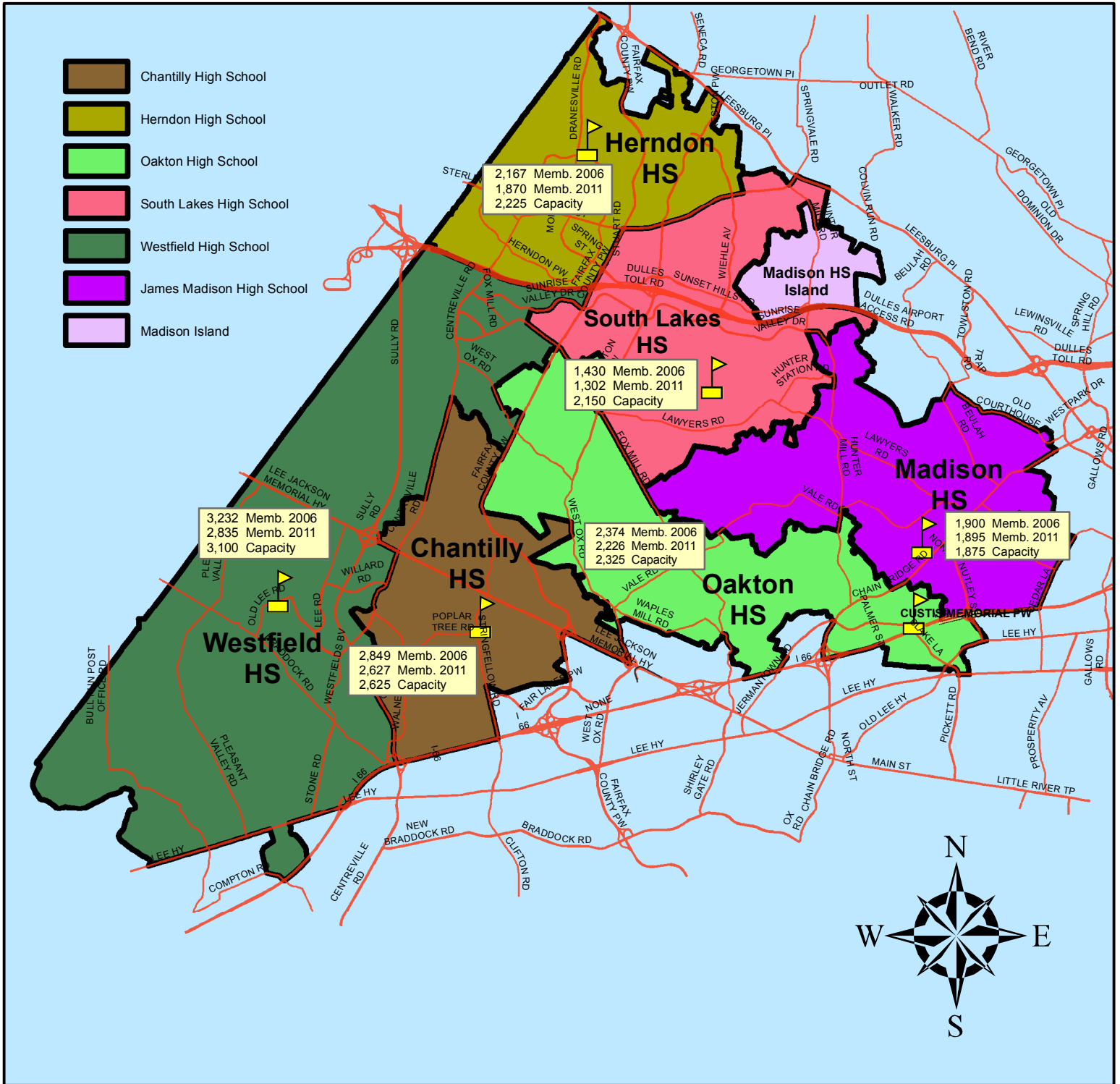
Attachment: List of Primary Considerations for the West County High School Boundary Study

July 16, 2007

PRIMARY CONSIDERATIONS FOR THE WEST COUNTY HIGH SCHOOL BOUNDARY STUDY

1. Projected school enrollment and capacity – Enrollments and capacities at several schools in the study are out of balance. For example, South Lakes High School will have 700 to 800 student spaces available when its renovation is completed in 2008. Available space should be utilized to reduce overcrowding at other schools in the study area.
2. The distribution of programs and resources – Schools with unusually high or low enrollments often experience difficulty allocating resources. In schools with high enrollment there may be restricted opportunities available in co-curricular and extra curricular activities such as sports or music programs. Conversely, schools with low enrollments may have trouble offering all the electives or higher level courses desired by students.
3. The socioeconomic characteristics of school populations – There are significant disparities in the socioeconomic characteristics of schools in the study area. The effect of boundary changes on these characteristics should be considered with the goal being to provide balance among the schools to the extent practicable.
4. Contiguous school attendance areas – Boundary recommendations resulting from this study should, where possible, eliminate attendance area “islands”.

West County Boundary Study - 07/09/2007



School	Address	Max Capacity	Membership 2006	Membership 2011
Chantilly High School	4201 Stringfellow Rd	2625	2849	2627
Herndon High School	700 Bennett St.	2225	2167	1870
James Madison High School	2500 James Madison Dr	1875	1900	1895
Oakton High School	2900 Sutton Rd	2325	2374	2226
South Lakes High School	11400 South Lakes Dr	2150	1430	1302
Westfield High School	4700 Stonecroft Bv	3100	3232	2835