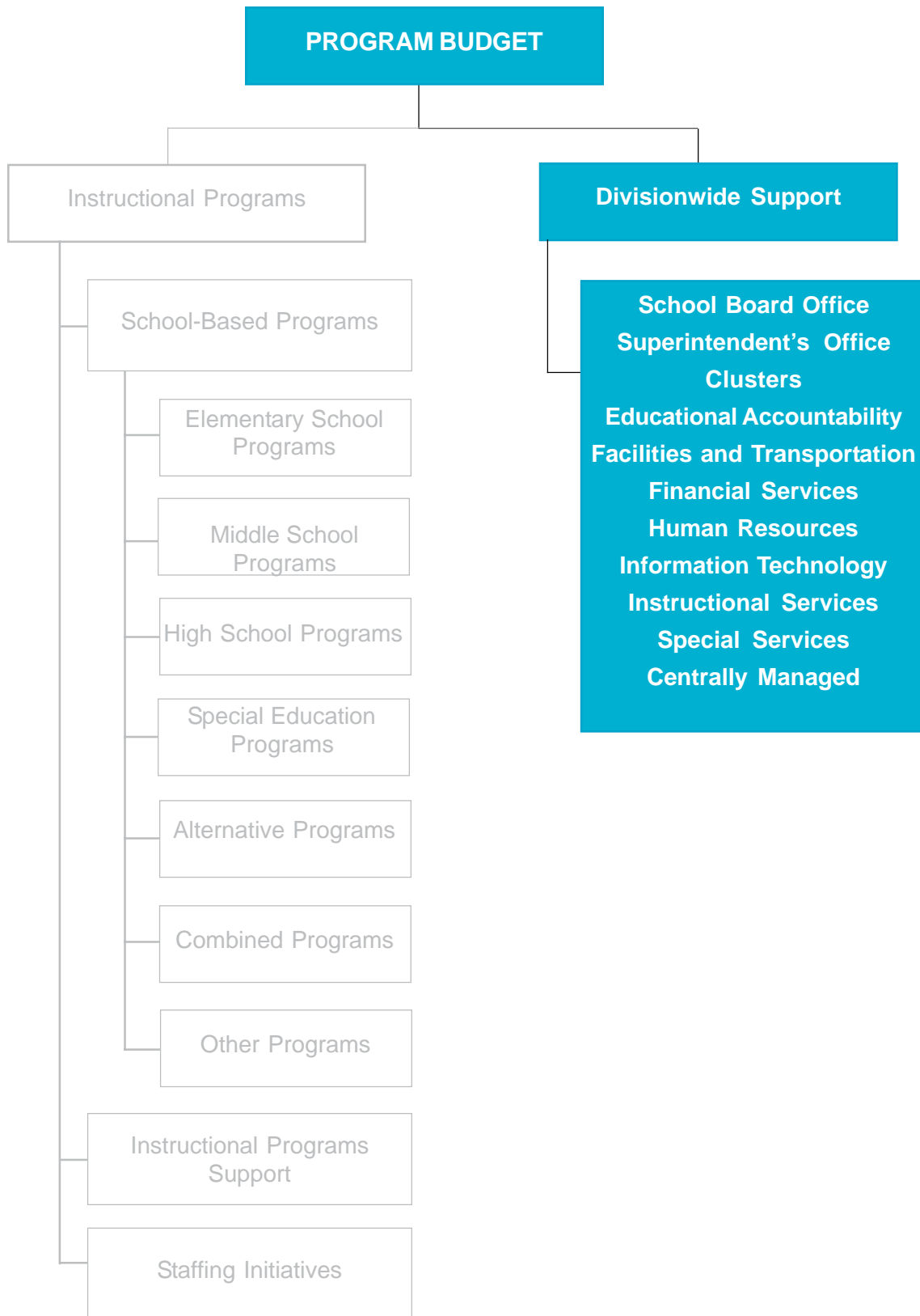
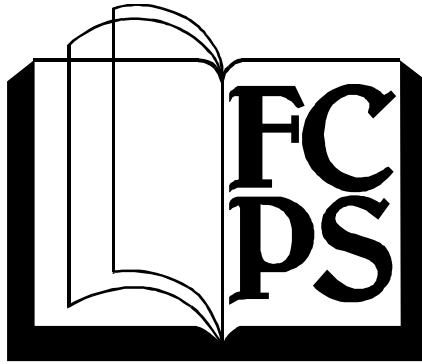


# Divisionwide Support Programs





# Divisionwide Support Programs

## **Divisionwide Support Programs Introduction**

The Divisionwide Support Program section is divided into two categories: Department Programs and Centrally Managed Programs. The Department Program section includes departments, the School Board Office, and cluster offices. The Centrally Managed Program section includes divisionwide programs that are allocated to all school-based and nonschool-based programs and are not assigned to one specific program. Utilities and local travel are examples of Centrally Managed Programs.

The FY 2006 Program Budget provides information for 56 divisionwide and 18 centrally managed programs. Department programs have a total budget of \$476.2 million and include 1,719.4 positions. Centrally Managed Programs have a total budget of \$78.6 million.