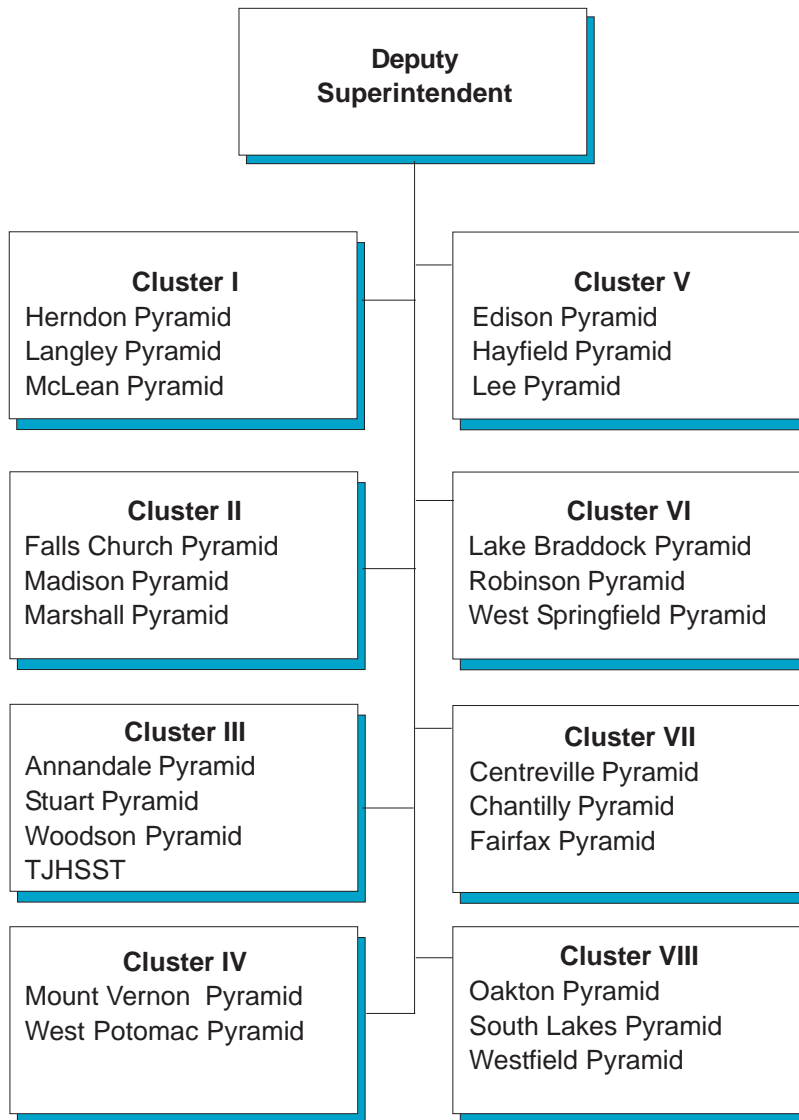
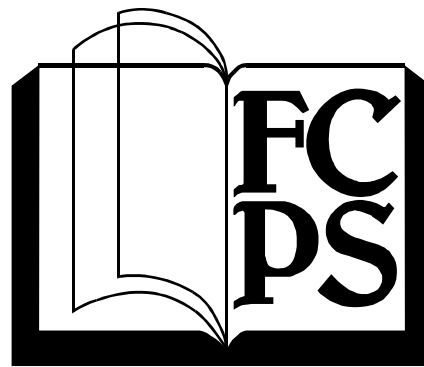


Cluster Offices





Cluster Offices

Cluster Offices

	FY 2005 Approved		FY 2006 Proposed	
	School-Based	Nonschool-Based	School-Based	Nonschool-Based
Office Expenditures				
FT Salaries	\$0	\$2,201,603	\$0	\$2,408,226
PT Salaries and Overtime	0		0	
Employee Benefits	0	658,345	0	771,112
Operating Expenses	0	946,611	0	983,107
Total Cost	\$0	\$3,806,559	\$0	\$4,162,444
Positions	0	24.0	0	24.0
Total Program		\$3,806,559		\$4,162,444
Offsetting Revenue		\$0		\$0
Net Cost		\$3,806,559		\$4,162,444
Total Positions		24.0		24.0
Mandates	None			
Program Contact	John English			
Phone Number	703-237-7025			
Web site	www.fcps.edu/deptarea.htm			

Office Overview

- Ensure educational excellence, equity, and higher expectations for student achievement in a safe learning environment
- Provide leadership, direction, and accountability for student achievement, school effectiveness, and community relations
- Supervise, advise, evaluate, and hire principals
- Serve as a school-community liaison
- Serve as a broker/advocate for the delivery of services to schools

Cluster Contacts

<u>Cluster</u>	<u>Assistant Superintendent</u>	<u>Phone Number</u>	<u>Pyramids Served</u>
I	Denny Dearden	703-204-3811	Herndon, Langley, McLean
II	Ellen Schoetzau	703-204-3815	Falls Church, Madison, Marshall
III	John English	703-237-7025	Annandale, Stuart, Woodson, TJHSST
IV	Calanthia Tucker	703-329-2525	Mount Vernon, West Potomac
V	Betsy Fenske	703-329-4309	Edison, Hayfield, Lee
VI	Patrick Murphy	703-246-8187	Lake Braddock, Robinson, West Springfield
VII	Lillian Lowery	703-246-8198	Centreville, Chantilly, Fairfax
VIII	Betsy Goodman	703-246-6510	Oakton, South Lakes, Westfield

Explanation of Costs

Funding for salaries and benefits reflect increases due to compensation adjustments.

