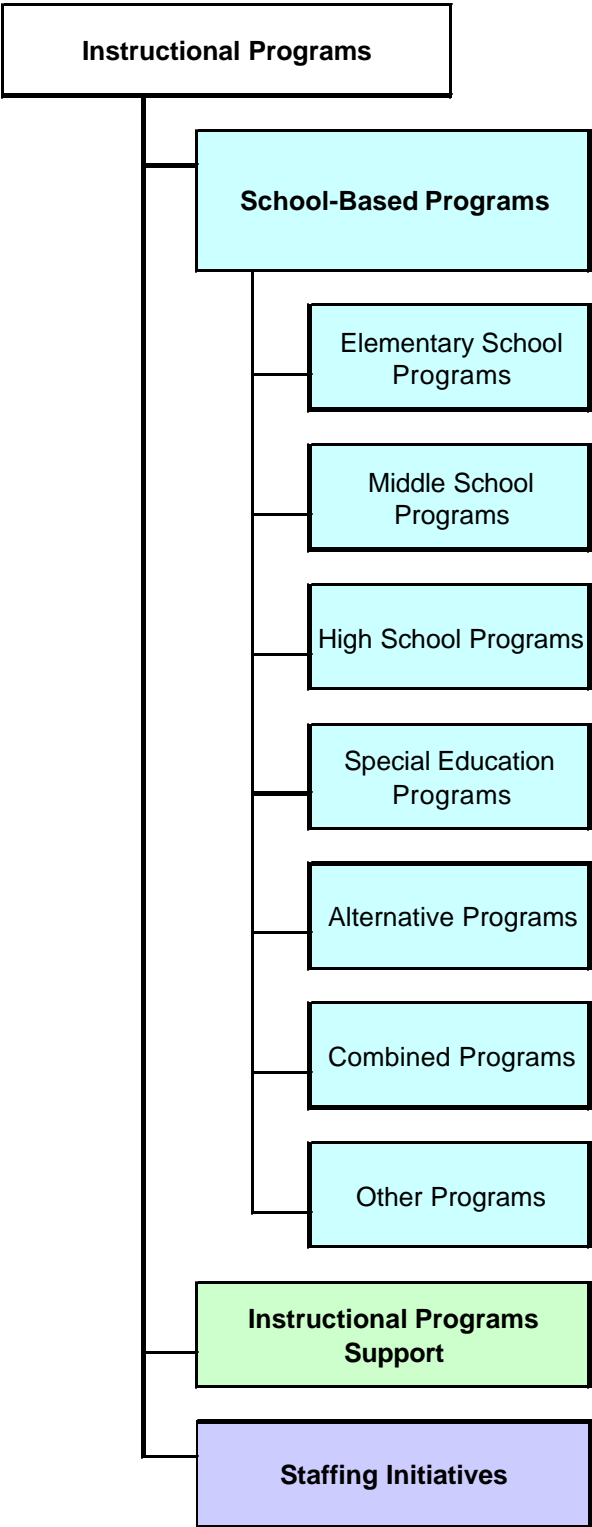
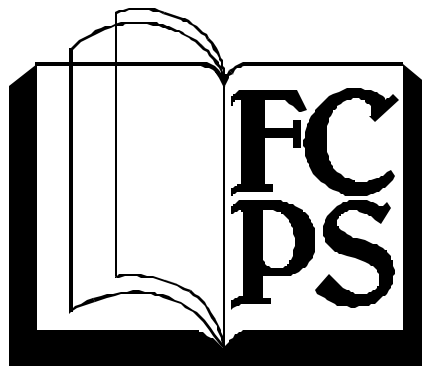

Instructional Programs





Instructional Programs

Instructional Programs Introduction

The Instructional Program section is divided into three distinct categories: School-Based Programs, Instructional Programs Support, and Staff Initiatives.

The School-Based Program section consists of seven sub-categories that narrate the FCPS instructional core and non-core programs required by all students at some point during their K-12 education. These programs include all the disciplines in which instruction is required by the state or otherwise available to students throughout the division. Programs such as English/Language Arts or Mathematics are not broken out by subject. They are included in an overall elementary, middle, or high school core narrative. The School-Based Program budget totals \$1.2 billion and includes 18,022.5 full-time positions.

	<u>Budget</u>	<u>Positions</u>
Elementary School Programs Narrates instructional programs found at elementary schools	\$381,098,733	6,095.5
Middle School Programs Narrates instructional programs found at middle schools	\$115,818,908	1,722.4
High School Programs Narrates instructional programs found at high schools	\$230,876,811	3,291.3
Special Education Programs Narrates available special education services	\$262,335,110	4,581.1
Alternative Programs Narrates non-traditional instructional programs for students at all levels	\$24,964,559	390.2
Combined Programs Narrates instructional programs targeted for specific students at all levels	\$149,762,328	1,796.6
Other Programs Narrates instructional programs such as Adult Education	\$9,174,657	145.4

The Instructional Programs Support section consists of programs that support the academic mission of FCPS through a variety of services rather than providing direct or specific instruction to students. These programs have a total budget of \$110.1 million and include 1,060.1 full-time positions.

The Staffing Initiatives section consists of programs that are designed to lower class size beyond the basic staffing formulas and provide divisionwide resources to enhance educational opportunities for students. These programs have a total budget of \$27.0 million and include 433.0 full-time positions.