

REPORT OF STUDENT RETENTIONS 1997-98

Purpose

The data in this report were collected as part of the 1997-98 Annual School Report which is required by the [Virginia Department of Education](#). This report on student retentions provides information to support the management of Fairfax County Public Schools.

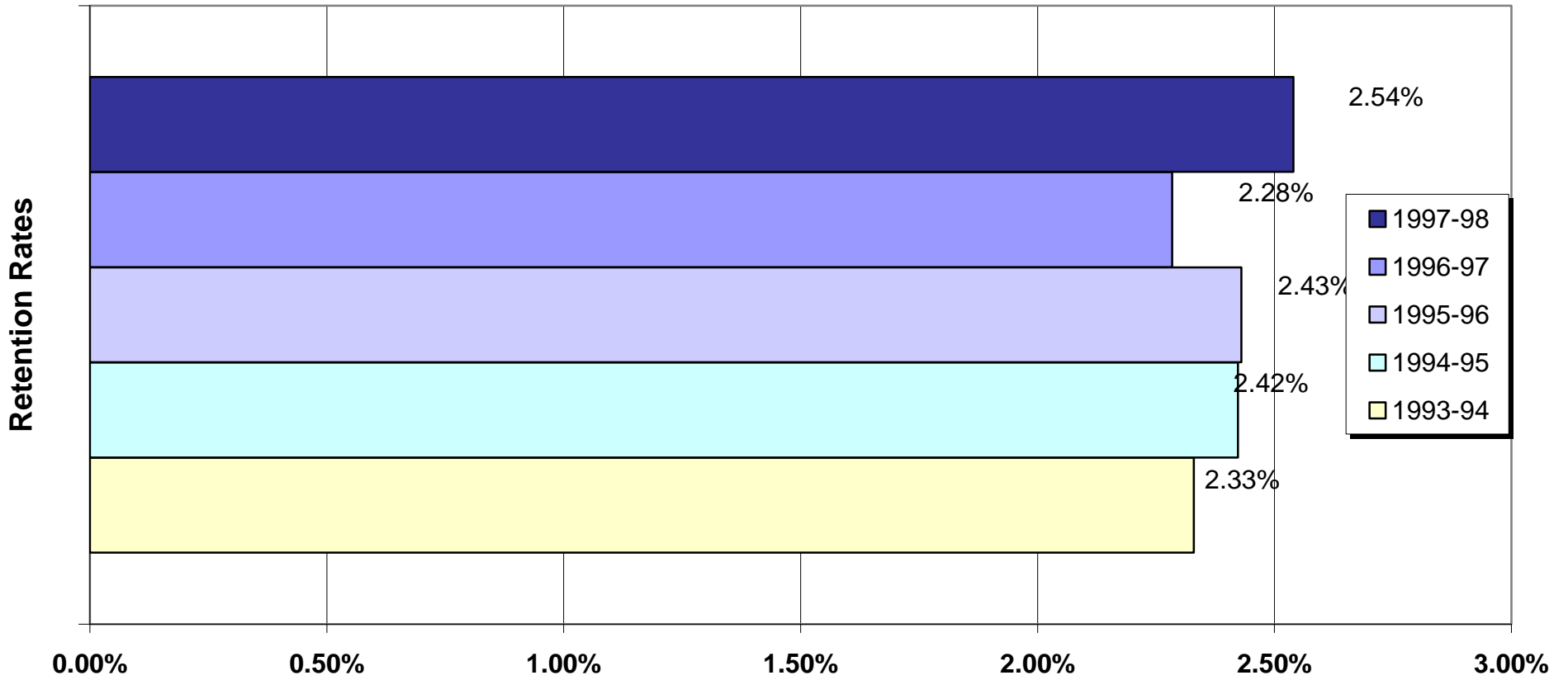
<i>Contents</i>	<i>Page</i>
Summary	i
Five-Year History of County Retention Rates	1
Five-Year History of Retention Rates by Level	2
County Retention Rates by Level	3
 <i>List of Tables</i>	
Table I: Student Retentions by Grade and Level	4
Table II: Student Retentions by School and Grade-Elementary	5
Table III: Student Retentions by School and Grade-Middle	9
Table IV: Student Retentions by School and Grade-High	10
Table V: Retained Students Who Attended 1998 Summer School	11

Date of Publication:
December 1998

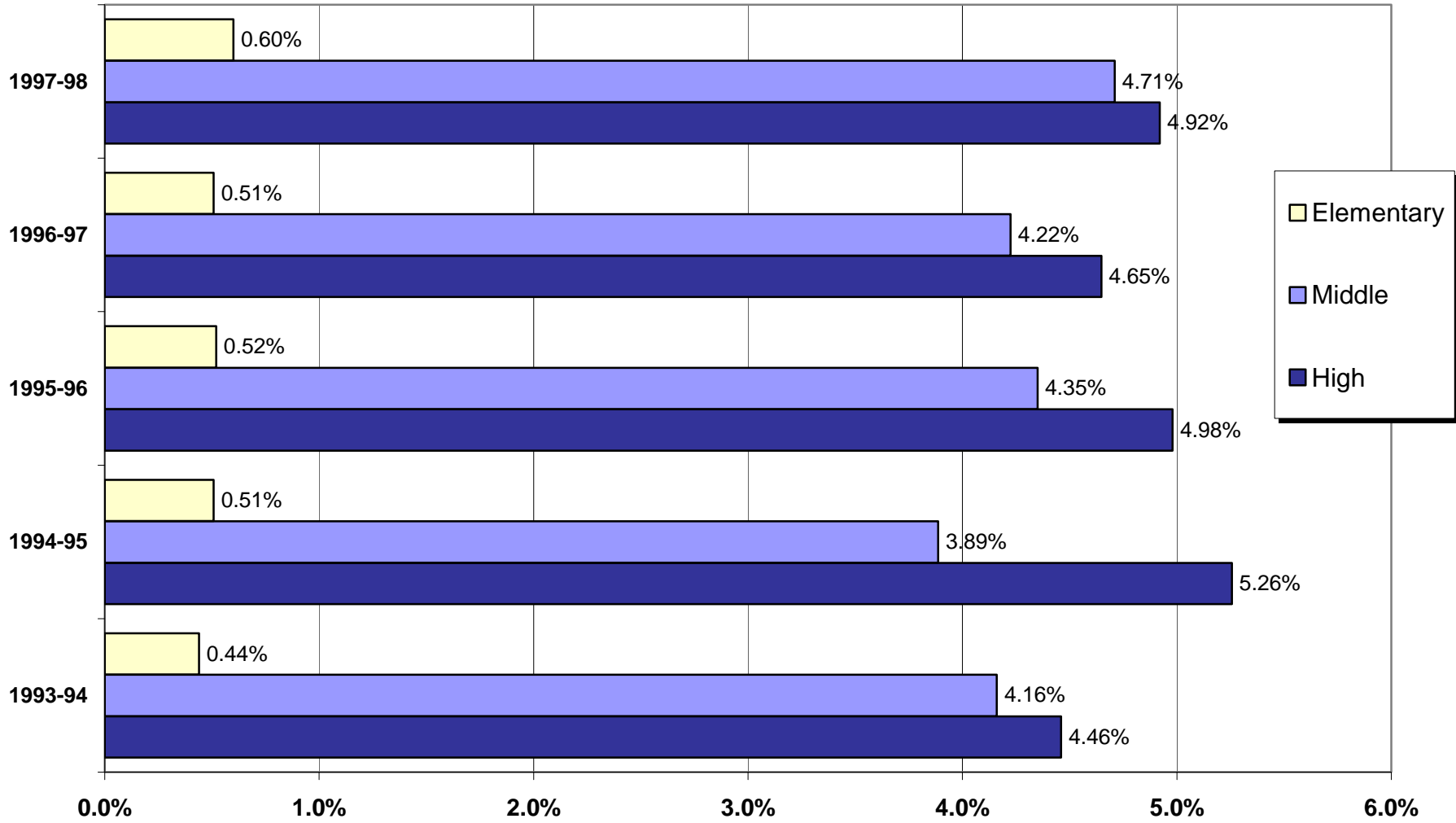
SUMMARY

- Retentions for the 1997-98 school year were 2.54 percent of the student end-of-year membership excluding special education centers, Instructional Services alternative centers, Student Services alternative centers, Family and Early Childhood Education (FECEP), preschool, Literacy Program (LP) and postgraduate students. The 1997-98 retention rate is a decrease of 0.21 percentage points over the past five years.
- At the elementary level, K-6, the county retention rates ranged from 0.08 percent in sixth grade to 1.44 percent in first grade. See Table I, page 4.
- At the middle school level, 6-8, county retention rate, by grade level, was 2.59 percent for sixth grade, 5.47 percent for seventh grade, and 5.03 percent for eighth grade. See Table I, page 4.
- At the high school level, 9-12, county retention rates ranged from 3.63 percent for tenth grade to 6.90 percent for ninth grade. See Table I, page 4.
- The median retention rate for elementary schools was 0.47 percent. Retentions rates among elementary schools ranged from 0.00 percent to 4.87 percent. See Table II, pages 5-8.
- The median retention rate for middle schools was 4.14 percent. Retention rates among middle schools ranged from 0.43 percent to 11.81 percent. See Table III, page 9.
- The median retention rate for high schools was 5.19 percent. Retention rates among high schools ranged from 0.00 percent to 22.58 percent. See Table IV, page 10.
- The percentage of 1997-98 retained students who attended summer school was 40.3. Of these students 65.2 percent were promoted the following year or graduated from summer school. See Table V, page 11.

Five-Year History of County Retention Rates



Five-Year History of Retention Rates by Level



County Retention Rates by Level

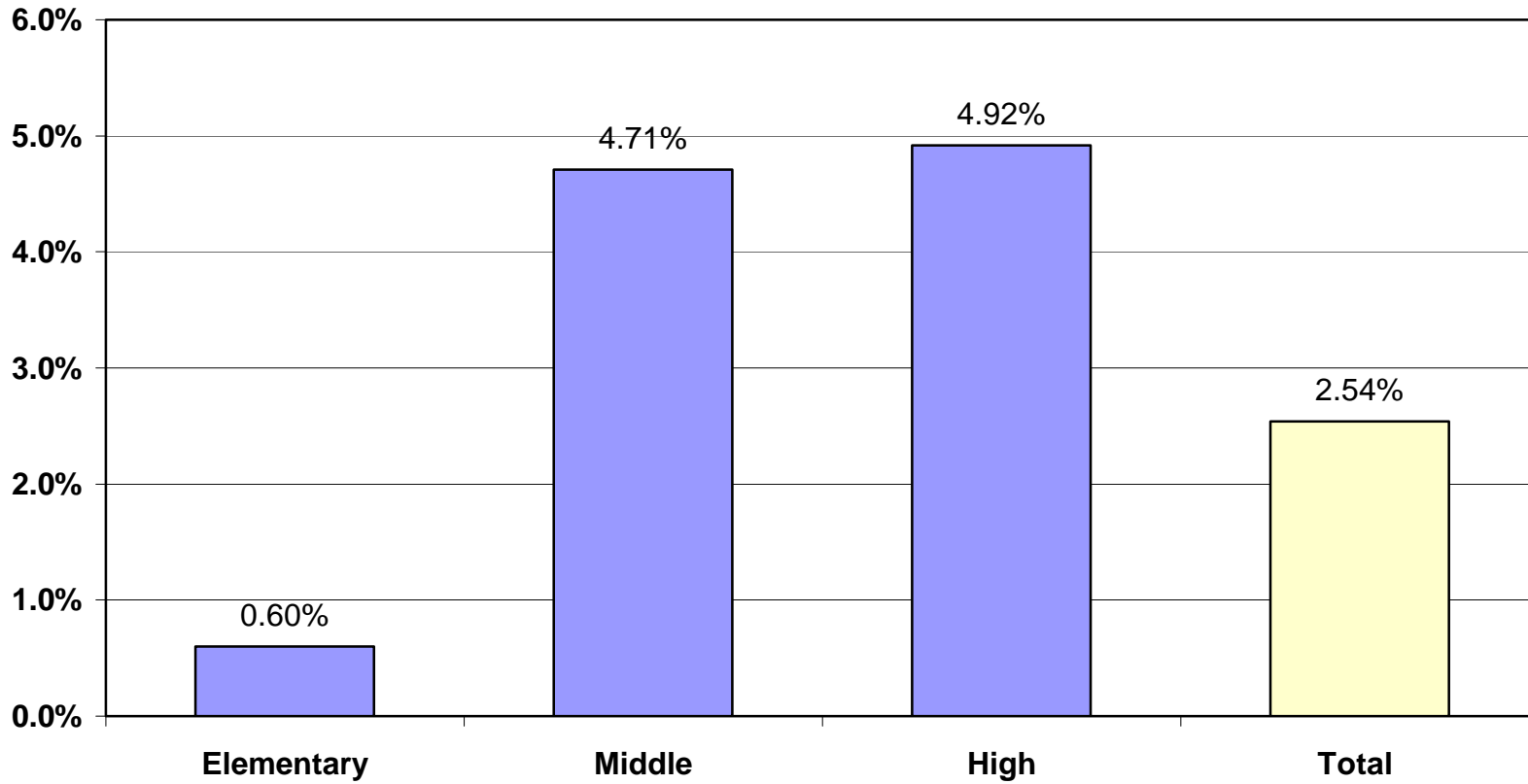


TABLE I
STUDENT RETENTIONS BY GRADE AND LEVEL

	K	1	2	3	4	5	6	SE*	GT**	Total
	<i>No.</i>	<i>No.</i>	<i>No.</i>	<i>No.</i>	<i>No.</i>	<i>No.</i>	<i>No.</i>	<i>No.</i>	<i>No.</i>	<i>No.</i>
Elementary	99 0.99%	162 1.44%	72 0.63%	50 0.48%	25 0.25%	17 0.17%	7 0.08%	29 0.90%	1 0.04%	462 0.60%

	6	7	8	SE*	GT**	Total
	<i>No.</i>	<i>No.</i>	<i>No.</i>	<i>No.</i>	<i>No.</i>	<i>No.</i>
Middle	22 2.59%	541 5.47%	479 5.03%	93 3.63%	3 0.22%	1,138 4.71%

Note: 6th grade students at three middle schools: Glasgow, Holmes, and Poe

	9	10	11	12	SE*	Total
	<i>No.</i>	<i>No.</i>	<i>No.</i>	<i>No.</i>	<i>No.</i>	<i>No.</i>
High	743 6.90%	368 3.63%	375 4.00%	354 4.04%	186 8.74%	2,026 4.92%

** Special Education - school-based self contained*

***Gifted/Talented - center-based*

**TABLE II
STUDENT RETENTIONS BY SCHOOL AND GRADE
ELEMENTARY SCHOOLS**

	K		1		2		3		4		5		6		SE*		GT**		Total	
	No.		No.		No.		No.		No.		No.		No.		No.		No.		No.	
Aldrin	1	0.9%	1	0.8%	1	1.1%	1	1.1%	0	0.0%	0	0.0%	0	0.0%	1	3.0%			5	0.71%
Annandale Terrace	1	1.0%	1	1.0%	1	1.1%	0	0.0%	0	71.0%	0	0.0%			0	0.0%			3	0.51%
Archer	1	1.7%	1	1.5%	0	0.0%	0	0.0%	0	0.0%	0	0.0%	0	0.0%	0	0.0%	0	0.0%	2	0.35%
Armstrong	0	0.0%	1	1.5%	1	1.3%	0	0.0%	0	0.0%	0	0.0%	0	0.0%	0	0.0%			2	0.41%
Baileys	0	0.0%	0	0.0%	0	0.0%	0	0.0%	0	0.0%	0	0.0%			0	0.0%			0	0.00%
Barden									0	0.0%	0	0.0%	0	0.0%	0	0.0%			0	0.00%
Beech Tree	0	0.0%	1	1.6%	0	0.0%	0	0.0%	0	0.0%	0	0.0%			1	6.7%			2	0.58%
Belle View	0	0.0%	0	0.0%	0	0.0%	2	4.4%	1	2.4%	0	0.0%	0	0.0%	0	0.0%			3	0.83%
Belvedere	1	1.4%	1	1.5%	0	0.0%	1	1.6%	0	0.0%	0	0.0%			0	0.0%	0	0.0%	3	0.63%
Bonnie Brae	0	0.0%	2	1.7%	1	0.8%	1	0.8%	0	0.0%	0	0.0%	0	0.0%	0	0.0%			4	0.48%
Braddock	0	0.0%	1	1.0%	0	0.0%	0	0.0%	0	0.0%	0	0.0%			0	0.0%			1	0.19%
Bren Mar Park	0	0.0%	3	6.3%	2	4.1%	2	3.3%	0	0.0%	0	0.0%			0	0.0%			7	2.07%
Brookfield	0	0.0%	1	1.3%	0	0.0%	0	0.0%	0	0.0%	0	0.0%	0	0.0%	1	3.3%			2	0.34%
Bucknell	0	0.0%	0	0.0%	0	0.0%	1	2.3%	0	0.0%	0	0.0%	0	0.0%	0	0.0%			1	0.32%
Bush Hill	0	0.0%	0	0.0%	0	0.0%	0	0.0%	0	0.0%	0	0.0%	0	0.0%	0	0.0%			0	0.00%
Camelot	1	1.1%	0	0.0%	0	0.0%	0	0.0%	0	0.0%	0	0.0%	0	0.0%	0	0.0%			1	0.19%
Cameron	0	0.0%	4	5.4%	5	6.3%	4	5.3%	1	1.7%	0	0.0%	0	0.0%	0	0.0%			14	2.60%
Canterbury Woods	2	4.2%	0	0.0%	0	0.0%	0	0.0%	0	0.0%	0	0.0%	0	0.0%	1	3.2%	0	0.0%	3	0.54%
Cardinal Forest	2	2.2%	6	5.7%	5	5.2%	0	0.0%	0	0.0%	0	0.0%	0	0.0%	0	0.0%			13	2.02%
Centre Ridge	0	0.0%	0	0.0%	2	1.2%	0	0.0%	0	0.0%	0	0.0%	0	0.0%	0	0.0%	0	0.0%	2	0.16%
Centreville	1	0.6%	2	1.1%	0	0.0%	0	0.0%	0	0.0%	0	0.0%	0	0.0%	0	0.0%			3	0.28%
Cheney	1	1.5%	1	1.3%	1	1.3%	1	1.5%							0	0%			4	1.37%
Cherry Run	0	0.0%	1	1.5%	0	0.0%	0	0.0%	0	0.0%	0	0.0%	0	0.0%	0	0.0%			1	0.17%
Chesterbrook	0	0.0%	0	0.0%	0	0.0%	0	0.0%	0	0.0%	0	0.0%	0	0.0%	0	0.0%			0	0.00%
Churchill Road	0	0.0%	1	1.9%	0	0.0%	0	0.0%	0	0.0%	0	0.0%	0	0.0%	0	0.0%	0	0.0%	1	0.18%
Clearview	0	0.0%	0	0.0%	0	0.0%	0	0.0%	0	0.0%	0	0.0%	0	0.0%	0	0.0%			0	0.00%
Clermont	0	0.0%	0	0.0%	0	0.0%	1	1.9%	0	0.0%	0	0.0%	0	0.0%	0	0.0%			1	0.29%
Clifton	0	0.0%	0	0.0%	0	0.0%	0	0.0%	0	0.0%	0	0.0%	0	0.0%	0	0.0%			0	0.00%
Columbia	2	3.1%	1	1.4%	0	0.0%	0	0.0%	0	0.0%	0	0.0%			2	7.1%			5	1.19%
Crestwood	0	0.0%	3	5.2%	0	0.0%	0	0.0%	0	0.0%	1	2.0%	0	0.0%	0	0.0%			4	1.03%
Crossfield	0	0.0%	0	0.0%	0	0.0%	1	0.9%	0	0.0%	0	0.0%	0	0.0%	0	0.0%			1	0.12%
Cub Run	3	2.9%	0	0.0%	1	0.8%	0	0.0%	0	0.0%	0	0.0%	0	0.0%	0	0.0%			4	0.53%
Cunningham Park	2	3.6%	0	0.0%	0	0.0%	0	0.0%	0	0.0%	0	0.0%	1	2.9%	0	0.0%			3	0.82%
Deer Park	0	0.0%	1	0.9%	0	0.0%	0	0.0%	0	0.0%	0	0.0%	0	0.0%	0	0.0%			1	0.13%
Dogwood	0	0.0%	0	0.0%	1	1.2%	0	0.0%	0	0.0%	0	0.0%	0	0.0%	0	0.0%			1	0.20%
Dranesville	0	0.0%	1	0.9%	0	0.0%	0	0.0%	0	0.0%	0	0.0%	0	0.0%	0	0.0%			1	0.11%
Fairfax Villa	0	0.0%	3	5.8%	0	0.0%	0	0.0%	0	0.0%	0	0.0%	0	0.0%	4	6.8%			7	1.80%

**TABLE II
STUDENT RETENTIONS BY SCHOOL AND GRADE
ELEMENTARY SCHOOLS**

	K		1		2		3		4		5		6		SE*		GT**		Total	
	No.		No.		No.		No.		No.		No.		No.		No.		No.		No.	
Fairhill	3	4.6%	1	2.0%	2	4.0%	2	4.1%	2	5.3%	3	6.1%	2	4.6%	2	50.0%			17	4.87%
Fairview	0	0.0%	0	0.0%	0	0.0%	0	0.0%	0	0.0%	0	0.0%	0	0.0%	0	0.0%			0	0.00%
Flint Hill	2	2.0%	1	1.3%	0	0.0%	1	1.2%	0	0.0%	0	0.0%	0	0.0%	1	4.2%			5	0.72%
Floris	0	0.0%	0	0.0%	0	0.0%	0	0.0%	0	0.0%	0	0.0%	0	0.0%	1	2.4%			1	0.11%
Forest Edge	2	3.8%	2	3.6%	2	2.7%	1	2.2%	1	1.8%	0	0.0%	0	0.0%	1	4.8%	0	0.0%	9	1.49%
Forestdale	0	0.0%	1	1.9%	0	0.0%	0	0.0%	0	0.0%	1	2.4%	0	0.0%	0	0.0%			2	0.59%
Forestville	0	0.0%	0	0.0%	0	0.0%	0	0.0%	0	0.0%	1	0.8%	1	0.9%	0	0.0%			2	0.25%
Fort Hunt	1	1.8%	3	2.8%	0	0.0%	1	1.5%	0	0.0%	1	1.5%	0	0.0%	0	0.0%			6	1.16%
Fox Mill	0	0.0%	0	0.0%	0	0.0%	0	0.0%	0	0.0%	0	0.0%	0	0.0%	0	0.0%			0	0.00%
Franconia	2	3.2%	1	1.8%	3	4.9%	0	0.0%	0	0.0%	1	2.1%	0	0.0%	0	0.0%			7	1.75%
Freedom Hill	0	0.0%	2	2.7%	0	0.0%	0	0.0%	0	0.0%	0	0.0%	0	0.0%	0	0.0%			2	0.43%
Garfield	0	0.0%	0	0.0%	0	0.0%	0	0.0%	0	0.0%	0	0.0%	0	0.0%	0	0.0%			0	0.00%
Glen Forest	6	4.0%	9	5.4%	0	0.0%	2	1.6%	0	0.0%	0	0.0%			0	0.0%			17	1.98%
Graham Road	0	0.0%	1	1.7%	0	0.0%	1	1.9%	1	2.1%	0	0.0%	0	0.0%	0	0.0%			3	0.83%
Great Falls	0	0.0%	1	0.9%	0	0.0%	0	0.0%	0	0.0%	0	0.0%	0	0.0%	0	0.0%			1	0.15%
Green Acres	0	0.0%	2	3.2%	1	2.6%	0	0.0%	0	0.0%	0	0.0%	0	0.0%	1	8.3%			4	1.10%
Greenbriar East	3	3.3%	0	0.0%	0	0.0%	0	0.0%	0	0.0%	0	0.0%	0	0.0%	0	0.0%			3	0.50%
Greenbriar West	5	5.0%	2	2.1%	1	1.0%	0	0.0%	0	0.0%	0	0.0%	1	1.4%	0	0.0%	0	0.0%	9	1.13%
Groveton	0	0.0%	1	1.2%	0	0.0%	0	0.0%	0	0.0%	0	0.0%	0	0.0%	0	0.0%			1	0.18%
Gunston	0	0.0%	3	4.6%	2	2.3%	0	0.0%	0	0.0%	0	0.0%	0	0.0%	1	3.0%			6	1.13%
Halley	4	3.7%	1	1.0%	0	0.0%	0	0.0%	0	0.0%	0	0.0%	0	0.0%	0	0.0%			5	0.70%
Haycock	0	0.0%	1	2.5%	0	0.0%	0	0.0%	0	0.0%	0	0.0%	0	0.0%	0	0.0%	0	0.0%	1	0.19%
Hayfield	0	0.0%	0	0.0%	0	0.0%	0	0.0%	0	0.0%	0	0.0%	0	0.0%	0	0.0%			0	0.00%
Herndon	1	0.7%	2	1.3%	0	0.0%	0	0.0%	1	0.8%	0	0.0%	0	0.0%	0	0.0%			4	0.38%
Hollin Meadows	1	1.3%	1	1.4%	2	2.6%	0	0.0%	0	0.0%	0	0.0%	0	0.0%	0	0.0%			4	0.80%
Hunt Valley	0	0.0%	1	1.1%	2	2.4%	1	1.2%	1	0.9%	0	0.0%	0	0.0%	0	0.0%			5	0.74%
Hunters Woods	0	0.0%	0	0.0%	0	0.0%	0	0.0%	0	0.0%	0	0.0%	0	0.0%	0	0.0%	0	0.0%	0	0.00%
Hutchison	0	0.0%	3	2.5%	0	0.0%	1	0.9%	0	0.0%	0	0.0%	0	0.0%	0	0.0%			4	0.48%
Hybla Valley	2	2.4%	5	6.1%	6	7.3%	4	4.3%	2	2.5%	2	2.9%	0	0.0%	0	0.0%			21	3.82%
Jermantown	1	1.7%	1	2.0%	1	2.1%	0	0.0%	0	0.0%	0	0.0%	0	0.0%	0	0.0%			3	0.90%
Keene Mill	0	0.0%	1	2.6%	1	2.3%	0	0.0%	1	2.1%	1	2.0%	0	0.0%	0	0.0%	0	0.0%	4	0.80%
Kent Gardens	3	3.5%	0	0.0%	0	0.0%	0	0.0%	0	0.0%	0	0.0%	0	0.0%	0	0.0%			3	0.46%
Kings Glen									1	0.6%	0	0.0%	0	0.0%	0	0.0%			1	0.18%
Kings Park	5	3.7%	4	2.3%	1	0.6%	4	2.2%							0	0.0%			14	2.06%
Lake Anne	1	1.5%	6	5.8%	1	1.2%	0	0.0%	3	5.1%	0	0.0%	0	0.0%	0	0.0%			11	2.09%
Lane	0	0.0%	1	0.6%	1	0.7%	1	0.8%	0	0.0%	0	0.0%	0	0.0%	0	0.0%			3	0.31%
Laurel Ridge	1	1.5%	0	0.0%	0	0.0%	0	0.0%	0	0.0%	0	0.0%	0	0.0%	0	0.0%			1	0.12%

**TABLE II
STUDENT RETENTIONS BY SCHOOL AND GRADE
ELEMENTARY SCHOOLS**

	K		1		2		3		4		5		6		SE*		GT**		Total	
	No.		No.		No.		No.		No.		No.		No.		No.		No.		No.	
Sunrise Valley	0	0.0%	0	0.0%	0	0.0%	0	0.0%	0	0.0%	0	0.0%	0	0.0%	0	0.0%	0	0.0%	0	0.00%
Terra-Centre	1	1.2%	0	0.0%	0	0.0%	0	0.0%	0	0.0%	0	0.0%	0	0.0%	1	3.5%			2	0.30%
Terraset	0	0.0%	3	3.4%	0	0.0%	0	0.0%	0	0.0%	1	1.4%	0	0.0%	0	0.0%			4	0.67%
Timber Lane	0	0.0%	0	0.0%	0	0.0%	0	0.0%	0	0.0%	0	0.0%	1	1.7%	1	3.6%			2	0.43%
Union Mill	4	4.0%	3	2.9%	0	0.0%	0	0.0%	0	0.0%	0	0.0%	1	0.6%	0	0.0%			8	0.92%
Vienna	0	0.0%	3	5.8%	0	0.0%	2	4.3%	0	0.0%	0	0.0%	0	0.0%	0	0.0%			5	1.57%
Virginia Run	5	3.7%	2	1.3%	0	0.0%	2	1.5%	0	0.0%	0	0.0%	0	0.0%	0	0.0%			9	0.88%
Wakefield Forest	0	0.0%	0	0.0%	0	0.0%	0	0.0%	0	0.0%	0	0.0%	0	0.0%	0	0.0%			0	0.00%
Waples Mill	0	0.0%	0	0.0%	0	0.0%	0	0.0%	0	0.0%	0	0.0%	0	0.0%	0	0.0%			0	0.00%
Washington Mill	0	0.0%	0	0.0%	2	3.2%	2	2.3%	1	1.6%	0	0.0%	0	0.0%	0	0.0%			5	1.05%
Waynewood	1	1.8%	0	0.0%	2	2.1%	0	0.0%	0	0.0%	0	0.0%	0	0.0%	0	0.0%			3	0.51%
West Springfield	0	0.0%	1	2.0%	0	0.0%	0	0.0%	0	0.0%	0	0.0%	0	0.0%	0	0.0%			1	0.24%
Westbriar	0	0.0%	0	0.0%	0	0.0%	0	0.0%	0	0.0%	0	0.0%	0	0.0%	0	0.0%			0	0.00%
Westgate	0	0.0%	0	0.0%	0	0.0%	0	0.0%	0	0.0%	0	0.0%	0	0.0%	0	0.0%			0	0.00%
Westlawn	0	0.0%	0	0.0%	0	0.0%	0	0.0%	0	0.0%	0	0.0%	0	0.0%	0	0.0%			0	0.00%
Westmore	3	5.7%	2	4.4%	2	5.3%	0	0.0%	0	0.0%	1	2.3%	0	0.0%	1	8.3%			9	2.83%
Weyanoke	1	1.1%	3	3.7%	0	0.0%	0	0.0%	0	0.0%	0	0.0%			1	16.7%			5	0.92%
White Oaks	0	0.0%	2	2.2%	0	0.0%	0	0.0%	0	0.0%	0	0.0%	0	0.0%	1	3.9%	0	0.0%	3	0.37%
Willow Springs	2	2.2%	1	1.1%	0	0.0%	0	0.0%	0	0.0%	0	0.0%	0	0.0%	2	3.0%			5	0.75%
Wolftrap	0	0.0%	0	0.0%	0	0.0%	0	0.0%	0	0.0%	0	0.0%	0	0.0%	0	0.0%			0	0.00%
Woodburn	0	0.0%	0	0.0%	0	0.0%	0	0.0%	0	0.0%	0	0.0%	0	0.0%	0	0.0%			0	0.00%
Woodlawn	2	2.5%	4	5.3%	2	2.2%	3	3.5%	1	1.4%	0	0.0%	0	0.0%	1	3.5%			13	2.20%
Woodley Hills	0	0.0%	3	3.9%	2	2.2%	0	0.0%	0	0.0%	0	0.0%	0	0.0%	0	0.0%			5	0.82%
Total	99	0.99%	162	1.44%	72	0.63%	50	0.48%	25	0.25%	17	0.17%	7	0.08%	29	0.90%	1	0.04%	462	0.60%

* Special Education-School Based Self Contained **Gifted/Talented-center based

TABLE III
STUDENT RETENTIONS BY SCHOOL AND GRADE
MIDDLE SCHOOLS

	6		7		8		SE*		GT**		Total	
	<i>No.</i>		<i>No.</i>		<i>No.</i>		<i>No.</i>		<i>No.</i>		<i>No.</i>	
Cooper			6	1.5%	1	0.3%	1	2.2%			8	0.99%
Franklin			2	0.3%	3	0.5%	1	1.3%			6	0.43%
Frost			9	2.7%	3	0.9%	2	2.0%	0	0.0%	14	1.50%
Glasgow	17	6.4%	24	8.8%	36	14.5%	7	9.7%	0	0.0%	84	6.52%
Hayfield			67	10.7%	59	10.5%	7	10.1%			133	10.58%
Herndon			38	6.8%	36	6.6%	6	3.3%			80	5.52%
Holmes	2	0.8%	18	6.8%	22	8.5%	7	6.4%			49	5.52%
Hughes			21	5.5%	4	1.2%	4	4.9%	0	0.0%	29	2.83%
Irving			24	4.1%	20	3.6%	2	2.5%			46	3.76%
Jackson			39	9.2%	22	5.2%	2	3.7%			63	6.99%
Key			23	6.4%	17	5.0%	2	5.4%			42	5.68%
Kilmer			18	6.1%	18	6.8%	9	12.5%			45	7.14%
Lake Braddock			16	2.9%	24	4.3%	2	4.3%	0	0.0%	42	3.17%
Lanier			13	3.1%	20	4.8%	5	6.3%			38	4.14%
Longfellow			15	5.5%	14	4.0%	4	8.5%	1	0.3%	34	3.33%
Poe	3	1.4%	8	2.9%	17	6.5%	5	5.7%			33	3.91%
Robinson			13	2.1%	16	2.5%	0	0.0%			29	2.21%
Rocky Run			29	5.3%	25	4.9%	3	5.5%	0	0.0%	57	4.52%
Sandburg			64	15.0%	44	10.9%	4	7.8%	2	2.4%	114	11.81%
Stone			25	4.5%	15	2.7%	6	5.4%			46	3.78%
Thoreau			4	1.3%	7	2.1%	0	0.0%			11	1.46%
Twain			26	8.2%	26	9.1%	9	5.6%	0	0.0%	61	6.91%
Whitman			39	10.0%	30	8.4%	5	11.9%			74	9.38%
Total	22	2.59%	541	5.47%	479	5.03%	93	3.63%	3	0.22%	1,138	4.71%

* Special Education-School Based Self Contained **Gifted/Talented-center based

**TABLE IV
STUDENT RETENTIONS BY SCHOOL AND GRADE
HIGH SCHOOLS**

	9		10		11		12		SE*		Total	
	No.		No.		No.		No.		No.		No.	
Annandale	66	11.5%	22	4.4%	31	6.7%	27	6.8%	7	12.3%	153	7.62%
Area I Alt. High	5	20.8%	2	33.3%	0	0.0%	0	0.0%	0	0.0%	7	22.58%
Area II Alt. High	0	0.0%	0	0.0%	0	0.0%	0	0.0%	0	0.0%	0	0.00%
Area III Alt. High	1	5.9%	1	25.0%	0	0.0%	0	0.0%	0	0.00%	2	8.70%
Centreville	48	6.7%	23	3.9%	18	3.0%	11	2.2%	3	4.1%	103	4.12%
Chantilly	49	7.6%	19	3.0%	28	5.1%	18	3.4%	22	9.2%	136	5.21%
Edison	32	10.5%	7	2.5%	16	6.2%	7	2.8%	9	6.0%	71	5.71%
Fairfax	38	8.9%	10	2.4%	14	3.7%	15	4.5%	7	9.9%	84	5.17%
Falls Church	42	11.8%	22	6.8%	18	6.1%	30	10.6%	6	5.8%	118	8.68%
Hayfield	28	4.9%	19	3.5%	16	3.8%	19	4.6%	7	13.7%	89	4.44%
Herndon	41	7.9%	22	4.2%	33	5.8%	20	4.3%	15	13.8%	131	5.97%
Jefferson Sci/Tech	0	0.0%	0	0.0%	0	0.0%	1	0.2%	0	0.0%	1	0.06%
Lake Braddock	24	3.8%	17	2.7%	17	3.0%	15	2.5%	2	3.9%	75	3.01%
Langley	7	1.5%	3	0.8%	5	1.5%	4	1.1%	8	8.9%	27	1.68%
Lee	59	13.1%	38	9.0%	47	11.5%	17	4.4%	3	11.1%	164	9.65%
Madison	13	3.5%	14	3.7%	4	1.1%	12	3.6%	10	14.1%	53	3.48%
Marshall	25	9.3%	9	3.3%	12	5.1%	10	4.7%	6	7.4%	62	5.78%
McLean	15	4.3%	16	4.4%	8	2.4%	21	7.2%	9	6.7%	69	4.67%
Mount Vernon	43	10.9%	21	6.8%	21	7.1%	11	3.9%	17	17.4%	113	8.18%
Oakton	26	4.3%	16	2.9%	17	3.1%	6	1.3%	12	12.6%	77	3.39%
Robinson	29	4.3%	8	1.3%	17	3.0%	6	1.1%	1	2.0%	61	2.47%
South Lakes	48	11.9%	23	6.3%	12	3.6%	24	7.4%	13	10.5%	120	7.71%
Stuart	34	10.0%	21	7.3%	19	7.3%	25	12.1%	10	7.9%	109	8.93%
West Potomac	38	9.7%	11	3.3%	11	3.4%	23	6.9%	6	8.8%	89	6.14%
West Springfield	19	3.7%	11	2.0%	8	1.6%	10	2.2%	8	10.3%	56	2.66%
Woodson	13	3.7%	13	3.4%	3	0.8%	22	6.2%	5	2.9%	56	3.41%
Total	743	6.89%	368	3.63%	375	4.00%	354	4.04%	186	8.74%	2,026	4.92%

TABLE V
RETAINED STUDENTS WHO ATTENDED 1998 SUMMER SCHOOL
AN ANALYSIS OF THEIR 1998-99 SCHOOL YEAR STATUS

Grade Level	1997-98			1998-99 Status							
	Retained Students	Retained Students Who Attended Summer School		Promoted		In Same Grade Level		Demoted or Changed Programs		Did not Return to FCPS	
	No.	No.	No.	No.	No.	No.	No.	No.	No.	No.	No.
K	99	4	4.0%	1	25.0%	3	75.0%	0	0.0%	0	0.0%
1	162	34	21.0%	2	5.9%	30	88.2%	0	0.0%	2	5.9%
2	72	20	27.8%	1	5.0%	19	95.0%	0	0.0%	0	0.0%
3	50	9	18.0%	0	0.0%	8	88.9%	0	0.0%	1	11.1%
4	25	3	12.0%	0	0.0%	3	100.0%	0	0.0%	0	0.0%
5	17	2	11.8%	0	0.0%	2	100.0%	0	0.0%	0	0.0%
6	29	19	65.5%	13	68.4%	5	26.3%	0	0.0%	1	5.3%
7	541	338	62.5%	289	85.5%	16	4.7%	16	4.7%	17	5.0%
8	479	355	74.1%	312	87.9%	7	2.0%	8	2.3%	28	7.9%
9	743	208	28.0%	75	36.1%	120	57.7%	6	2.9%	7	3.4%
10	368	102	27.7%	43	42.2%	54	52.9%	1	1.0%	4	3.9%
11	375	132	35.2%	40	30.3%	78	59.1%	3	2.3%	11	8.3%
12	354	143	40.4%	114 **	79.7%	19	13.3%	0	0.0%	10	7.0%
GT	4	3	75.0%	3	100.0%	0	0.0%	0	0.0%	0	0.0%
Special Ed *	308	89	28.9%	59	66.3%	21	23.6%	6	6.7%	3	3.4%
Total	3,626	1,461	40.3%	952	65.2%	385	26.4%	40	2.7%	84	5.7%

* Special Education - School Based Self Contained

** 1998 Summer School Graduates