



STATISTICAL REPORT

FAIRFAX COUNTY PUBLIC SCHOOLS  FAIRFAX, VIRGINIA

REPORT OF STUDENT RETENTIONS 2007-08

Purpose

The data in this report were collected as part of the 2007-08 Annual School Report which is required by the Virginia Department of Education. This report on student retentions provides information to support the management of Fairfax County Public Schools.

<u>Contents</u>	<u>Page</u>
Introduction	2
Summary	3
Five-Year History of County Retention Rates	4
Five-Year History of Retention Rates by Level	5
County Retention Rates by Level	6
 <i>List of Tables</i>	
Table I: Student Retentions by Grade and Level	7
Table II: Student Retentions by School and Grade - Elementary	8
Table III: Student Retentions by School and Grade - Middle	12
Table IV: Student Retentions by School and Grade - High	13
Table V: Retained Students Who Attended 2008 Summer School	14

Date of Publication
October 2008

INTRODUCTION

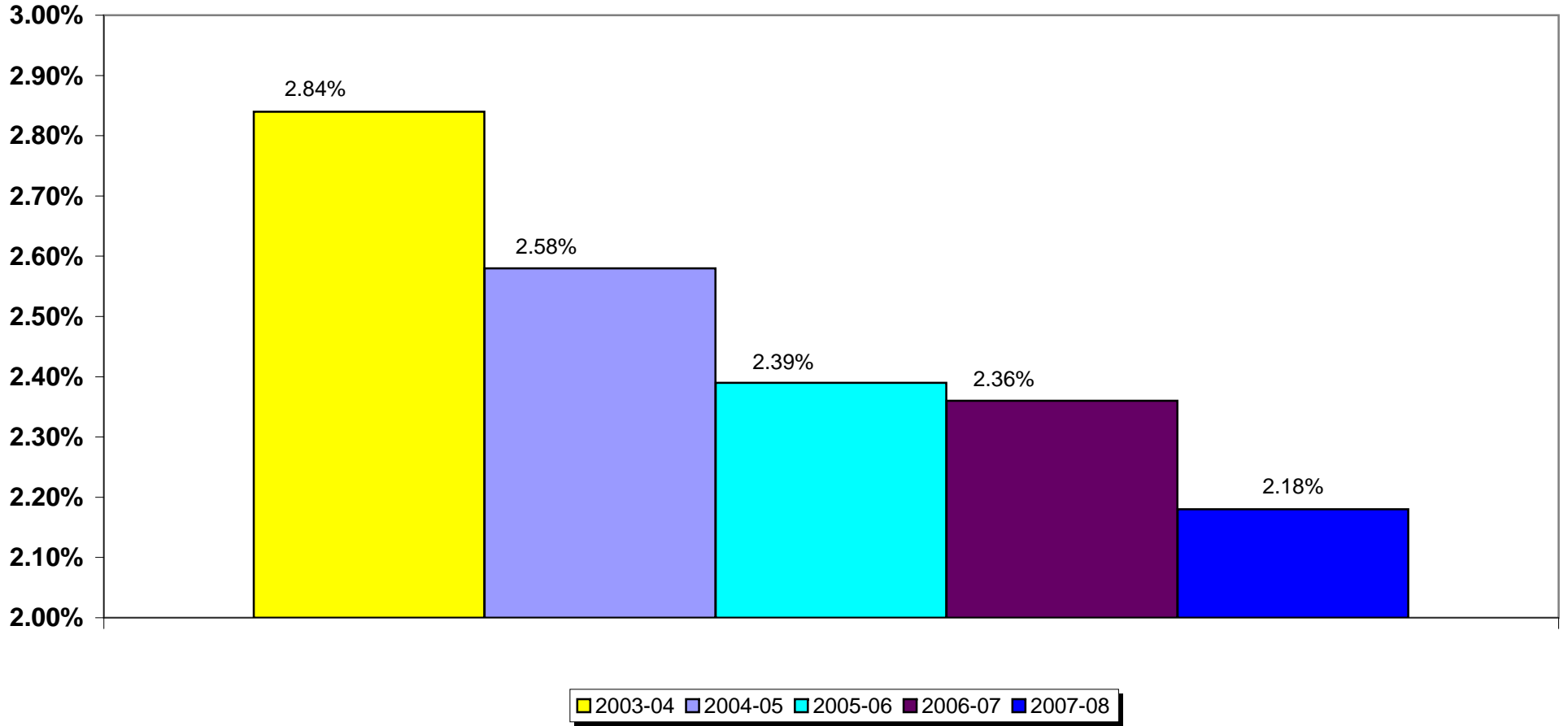
This is a report of retentions for the 2007-08 school year excluding special education centers, Instructional Services alternative centers, Student Services alternative centers, Family and Early Childhood Education (FECEP), preschool, and postgraduate students.

Inquiries regarding this report should be directed to Information Technology at 703-329-7727.

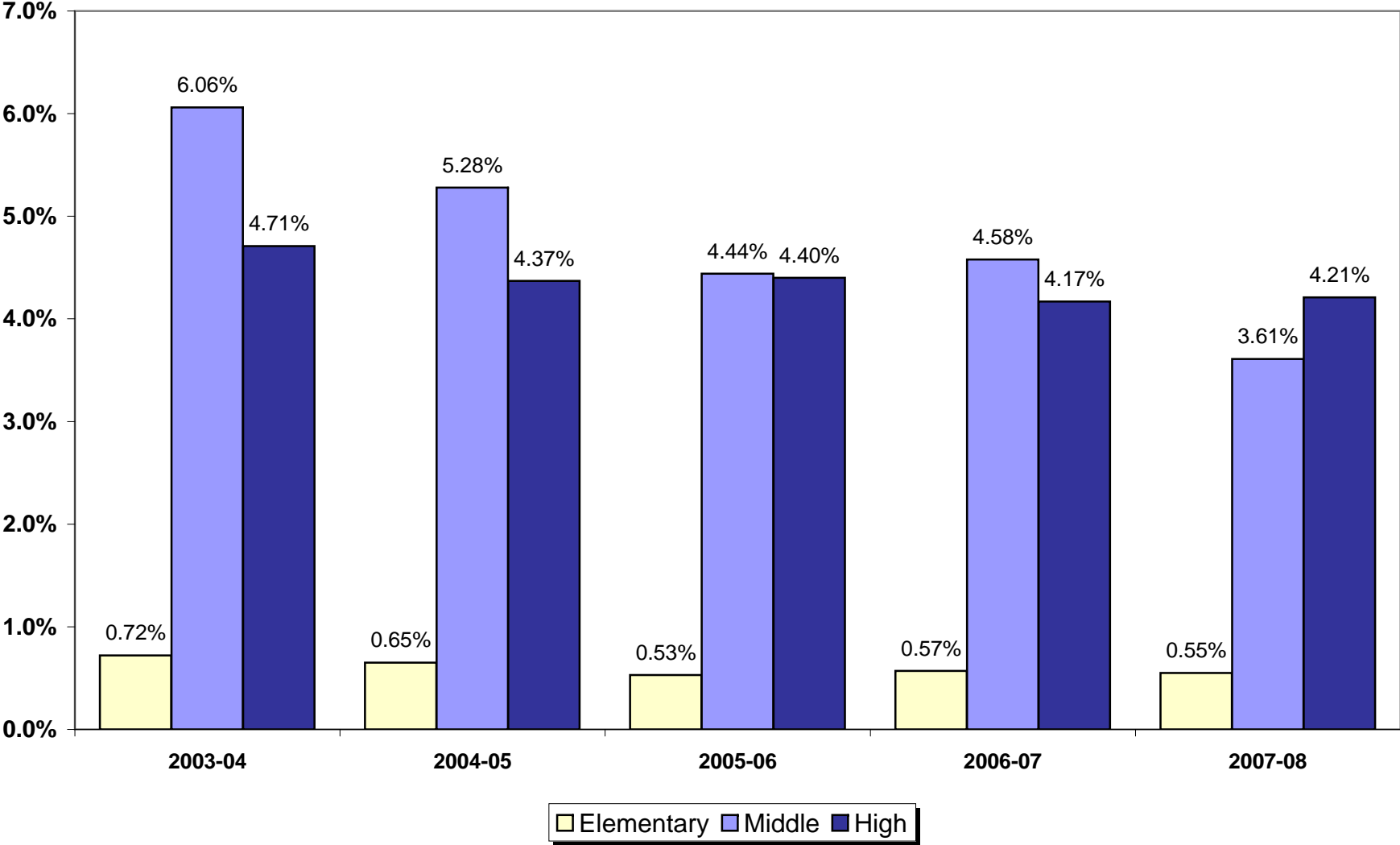
SUMMARY

- Retentions for the 2007-08 school year were 2.18 percent of the student end-of-year membership. The 2007-08 retention rate is a decrease of .66 percentage points over the past five years. See page 4.
- At the elementary level, K-6, the county retention rates ranged from 0.03 percent in sixth grade to 1.97 percent in kindergarten. See Table I, page 7.
- At the middle school level, 6-8, county retention rate, by grade level, was 3.35 percent for sixth grade, 3.95 percent for seventh grade, and 3.61 percent for eighth grade. See Table I, page 7.
- At the high school level, 9-12, county retention rates ranged from 1.99 percent for tenth grade to 6.58 percent for eleventh grade. See Table I, page 7.
- The median retention rate for elementary schools was 0.39 percent. Retentions rates among elementary schools ranged from 0.00 percent to 4.26 percent. See Table II, pages 8-11.
- The median retention rate for middle schools was 2.57 percent. Retention rates among middle schools ranged from 0.00 percent to 17.50 percent. See Table III, page 12.
- The median retention rate for high schools was 3.17 percent. Retention rates among high schools ranged from 0.00 percent to 25.53 percent. See Table IV, page 13.
- The percentage of 2007-08 retained students who attended summer school was 56.7. Of these students, 51.8 percent were promoted the following year or graduated from summer school. See Table V, page 14.
- Students are no longer reported as conditionally promoted.

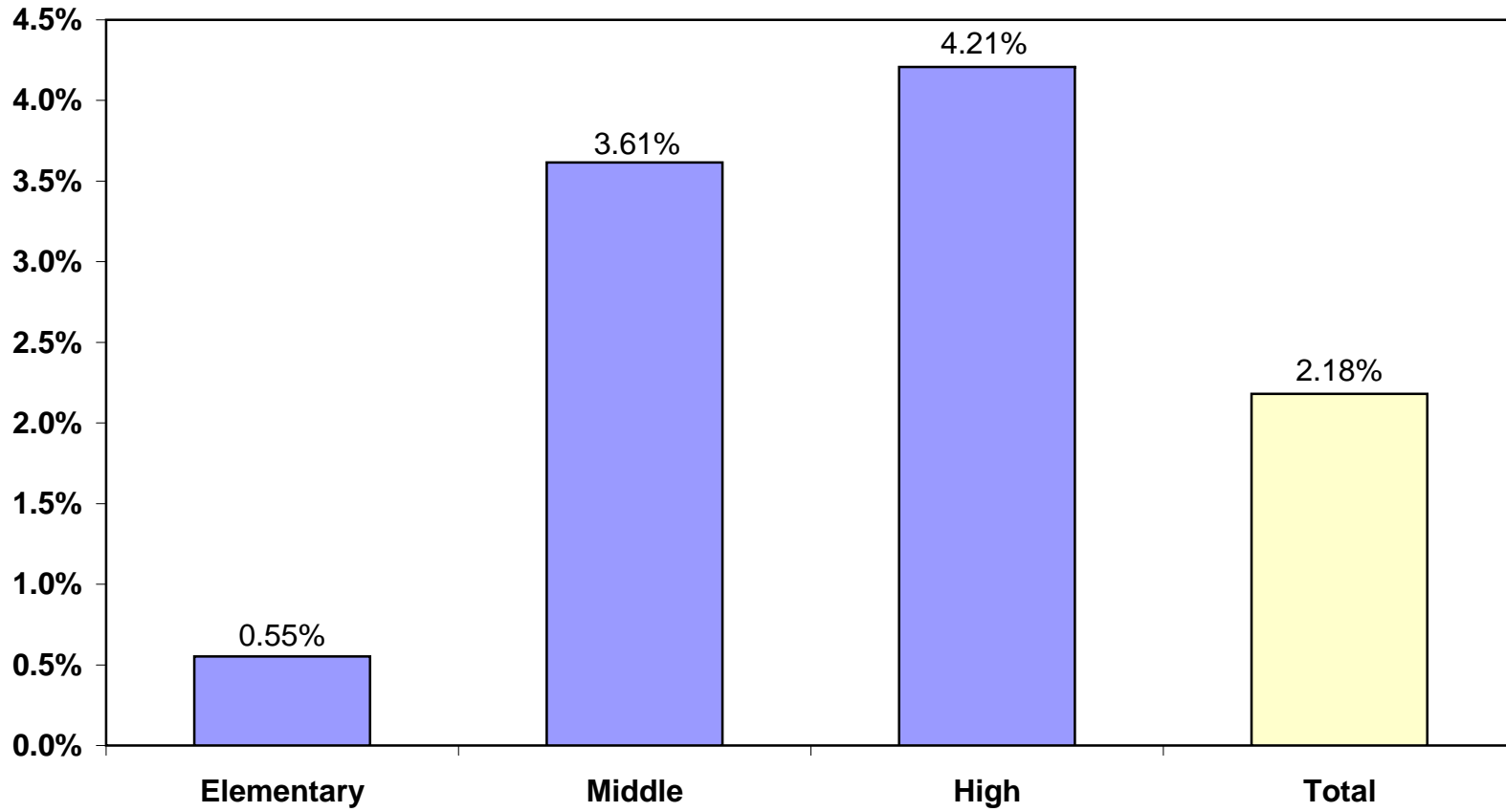
Five-Year History of County Retention Rates



Five-Year History of Retention Rates by Level



County Retention Rates by Level



**TABLE I
STUDENT RETENTIONS BY GRADE AND LEVEL**

	K	1	2	3	4	5	6	SE*	GT**	Total
	<i>No.</i>	<i>No.</i>	<i>No.</i>	<i>No.</i>	<i>No.</i>	<i>No.</i>	<i>No.</i>	<i>No.</i>	<i>No.</i>	<i>No.</i>
Elementary	220 1.97%	115 0.98%	39 0.34%	18 0.18%	9 0.09%	4 0.04%	3 0.03%	67 1.08%	0 0	475 0.55%

	6	7	8	SE*	GT**	Total
	<i>No.</i>	<i>No.</i>	<i>No.</i>	<i>No.</i>	<i>No.</i>	<i>No.</i>
Middle	28 3.35%	402 3.95%	364 3.61%	141 6.03%	5 0.20%	940 3.61%

Note: 6th grade students at three middle schools: Glasgow, Holmes, and Poe

	7***	8***	9	10	11	12	SE*	Total
	<i>No.</i>	<i>No.</i>						
High	1 8.33%	3 12.00%	480 4.02%	232 1.99%	791 6.58%	374 3.48%	250 5.93%	2131 4.21%

* *Special Education - School-Based Self-Contained*

** *Gifted/Talented - Center-Based*

*** *7th and 8th Graders at the Alternative Centers*

**TABLE II
STUDENT RETENTIONS BY SCHOOL AND GRADE
ELEMENTARY SCHOOLS**

	K		1		2		3		4		5		6		SE		GTC		Total	
	No.		No.		No.		No.		No.		No.		No.		No.		No.		No.	
WAPLES MILL	0	0.00%	0	0.00%	0	0.00%	0	0.00%	0	0.00%	0	0.00%	0	0.00%	0	0.00%	0	0.00%	0	0.00%
WASHINGTON MILL	4	4.94%	3	3.90%	2	2.56%	0	0.00%	0	0.00%	0	0.00%	0	0.00%	2	4.55%	0	0.00%	11	2.07%
WAYNEWOOD	0	0.00%	2	2.06%	1	0.97%	0	0.00%	0	0.00%	0	0.00%	0	0.00%	0	0.00%	0	0.00%	3	0.48%
WEST SPRINGFIELD	1	1.85%	0	0.00%	0	0.00%	0	0.00%	0	0.00%	0	0.00%	0	0.00%	1	2.17%	0	0.00%	2	0.46%
WESTBRIAR	1	1.52%	0	0.00%	0	0.00%	0	0.00%	0	0.00%	0	0.00%	0	0.00%	0	0.00%	0	0.00%	1	0.22%
WESTGATE	0	0.00%	0	0.00%	0	0.00%	0	0.00%	0	0.00%	0	0.00%	0	0.00%	0	0.00%	0	0.00%	0	0.00%
WESTLAWN	1	1.01%	1	1.12%	0	0.00%	0	0.00%	0	0.00%	0	0.00%	0	0.00%	0	0.00%	0	0.00%	2	0.33%
WEYANOKE	0	0.00%	1	1.19%	0	0.00%	0	0.00%	0	0.00%	0	0.00%	0	0.00%	0	0.00%	0	0.00%	1	0.20%
WHITE OAKS	2	3.17%	0	0.00%	0	0.00%	0	0.00%	0	0.00%	0	0.00%	0	0.00%	0	0.00%	0	0.00%	2	0.27%
WILLOW SPRINGS	0	0.00%	1	1.67%	1	1.52%	0	0.00%	0	0.00%	0	0.00%	0	0.00%	0	0.00%	0	0.00%	2	0.30%
WOLFTRAP	0	0.00%	0	0.00%	0	0.00%	0	0.00%	0	0.00%	0	0.00%	0	0.00%	0	0.00%	0	0.00%	0	0.00%
WOODBURN	4	5.13%	1	1.15%	0	0.00%	0	0.00%	0	0.00%	0	0.00%	0	0.00%	1	6.25%	0	0.00%	6	1.25%
WOODLAWN	0	0.00%	0	0.00%	0	0.00%	0	0.00%	0	0.00%	0	0.00%	0	0.00%	1	1.89%	0	0.00%	1	0.21%
WOODLEY HILLS	8	8.08%	4	4.44%	0	0.00%	1	1.20%	0	0.00%	0	0.00%	0	0.00%	0	0.00%	0	0.00%	13	2.28%
Elementary Totals	220	1.97%	115	0.98%	39	0.34%	18	0.18%	9	0.09%	4	0.04%	3	0.03%	67	1.08%	0	0.00%	475	0.55%

**TABLE III
STUDENT RETENTIONS BY SCHOOL AND GRADE
MIDDLE SCHOOLS**

	6		7		8		SE		GTC		Total	
	No.		7		No.		No.		No.		No.	
ALC AT BURKE	2	13.33%	1	12.50%	4	23.53%	0	0.00%	0	0.00%	7	17.50%
CARSON	0	0.00%	8	2.22%	3	0.82%	4	4.35%	0	0.00%	15	1.26%
COOPER	0	0.00%	1	0.23%	7	1.59%	3	10.34%	0	0.00%	11	1.22%
FRANKLIN	0	0.00%	5	1.20%	2	0.48%	5	4.63%	0	0.00%	12	1.28%
FROST	0	0.00%	3	0.84%	8	2.29%	4	4.26%	1	0.40%	16	1.52%
GLASGOW	17	6.07%	28	9.52%	22	8.40%	13	11.21%	1	0.69%	81	7.38%
HAYFIELD	0	0.00%	33	7.10%	18	4.07%	3	3.33%	0	0.00%	54	5.42%
HERNDON	0	0.00%	32	6.99%	32	7.53%	12	10.17%	0	0.00%	76	7.59%
HOLMES	5	2.27%	12	4.58%	18	7.47%	5	7.04%	0	0.00%	40	5.04%
HUGHES	0	0.00%	2	0.68%	9	3.36%	0	0.00%	0	0.00%	11	1.30%
IRVING	0	0.00%	0	0.00%	0	0.00%	0	0.00%	0	0.00%	0	0.00%
JACKSON	0	0.00%	53	13.52%	32	8.67%	18	14.75%	0	0.00%	103	11.15%
KEY	0	0.00%	22	5.71%	8	2.34%	7	7.45%	0	0.00%	37	4.51%
KILMER	0	0.00%	7	2.44%	12	3.72%	3	4.23%	1	0.26%	23	2.14%
LAKE BRADDOCK	0	0.00%	20	4.46%	12	2.43%	1	1.19%	1	0.34%	34	2.57%
LANIER	0	0.00%	16	3.50%	36	8.16%	13	10.48%	0	0.00%	65	6.36%
LIBERTY	0	0.00%	10	1.87%	21	4.25%	6	6.32%	0	0.00%	37	3.29%
LONGFELLOW	0	0.00%	0	0.00%	1	0.29%	2	2.78%	0	0.00%	3	0.28%
POE	4	1.24%	3	0.82%	4	1.15%	0	0.00%	0	0.00%	11	0.93%
ROBINSON	0	0.00%	3	0.53%	5	0.89%	1	0.87%	0	0.00%	9	0.72%
ROCKY RUN	0	0.00%	4	1.79%	0	0.00%	1	1.85%	0	0.00%	5	0.62%
SANDBURG	0	0.00%	55	12.61%	27	6.22%	9	11.11%	1	0.57%	92	8.18%
SOUTH COUNTY	0	0.00%	17	4.30%	16	3.83%	10	14.08%	0	0.00%	43	4.86%
STONE	0	0.00%	10	2.38%	6	1.35%	1	1.39%	0	0.00%	17	1.82%
THOREAU	0	0.00%	0	0.00%	0	0.00%	0	0.00%	0	0.00%	0	0.00%
TWAIN	0	0.00%	10	3.13%	21	5.92%	0	0.00%	0	0.00%	31	3.72%
WHITMAN	0	0.00%	47	10.83%	40	9.98%	20	20.83%	0	0.00%	107	11.49%
MIDDLE TOTALS	28	3.35%	402	3.95%	364	3.61%	141	6.03%	5	0.20%	940	3.61%

**TABLE IV
STUDENT RETENTIONS BY SCHOOL AND GRADE
HIGH SCHOOLS**

	7		8		9		10		11		12		SE		Total	
	No.		No.		No.		No.		No.		No.		No.		No.	
ALC AT BRYANT	1	16.67%	3	21.43%	7	36.84%	1	12.50%	0	0.00%	0	0.00%	0	0.00%	12	25.53%
ALC AT DUNN LORING	0	0.00%	0	0.00%	0	0.00%	0	0.00%	0	0.00%	0	0.00%	0	0.00%	0	0.00%
ALC AT MOUNTAIN VIEW	0	0.00%	0	0.00%	0	0.00%	0	0.00%	0	0.00%	0	0.00%	0	0.00%	0	0.00%
ANNANDALE	0	0.00%	0	0.00%	51	8.24%	18	3.39%	97	16.96%	44	10.58%	19	7.54%	229	9.58%
CENTREVILLE	0	0.00%	0	0.00%	12	2.36%	8	1.61%	42	8.03%	8	1.62%	7	3.76%	77	3.49%
CHANTILLY	0	0.00%	0	0.00%	12	2.02%	3	0.47%	9	1.29%	9	1.41%	11	4.74%	44	1.57%
EDISON	0	0.00%	0	0.00%	25	5.95%	4	1.00%	44	11.40%	12	3.17%	10	6.37%	95	5.46%
FAIRFAX	0	0.00%	0	0.00%	14	2.89%	6	1.09%	38	7.57%	5	1.18%	15	10.79%	78	3.71%
FALLS CHURCH	0	0.00%	0	0.00%	17	5.65%	10	3.60%	51	14.70%	17	8.06%	10	5.46%	105	7.95%
HAYFIELD	0	0.00%	0	0.00%	21	4.47%	11	3.18%	13	4.01%	20	6.78%	4	2.78%	69	4.37%
HERNDON	0	0.00%	0	0.00%	25	5.00%	10	1.96%	39	7.75%	12	2.51%	14	9.93%	100	4.69%
JEFFERSON SCI/TECH	0	0.00%	0	0.00%	0	0.00%	0	0.00%	0	0.00%	0	0.00%	0	0.00%	0	0.00%
LAKE BRADDOCK	0	0.00%	0	0.00%	18	2.99%	8	1.51%	19	3.14%	17	2.85%	10	6.67%	72	2.90%
LANGLEY	0	0.00%	0	0.00%	4	0.80%	4	0.79%	11	2.37%	2	0.44%	3	2.24%	24	1.16%
LEE	0	0.00%	0	0.00%	53	12.10%	14	3.54%	103	23.52%	42	10.22%	23	14.74%	235	12.78%
MADISON	0	0.00%	0	0.00%	2	0.44%	1	0.25%	14	3.14%	2	0.45%	6	3.82%	25	1.31%
MARSHALL	0	0.00%	0	0.00%	5	1.69%	3	1.02%	14	4.07%	3	1.12%	2	1.54%	27	2.03%
MCLEAN	0	0.00%	0	0.00%	11	2.81%	15	3.43%	0	0.00%	18	4.51%	9	7.14%	53	3.00%
MOUNT VERNON	0	0.00%	0	0.00%	32	7.96%	13	3.28%	55	14.07%	19	6.57%	16	7.27%	135	7.95%
OAKTON	0	0.00%	0	0.00%	9	1.78%	6	1.06%	2	0.39%	14	2.59%	5	2.46%	36	1.54%
ROBINSON	0	0.00%	0	0.00%	10	1.59%	4	0.64%	3	0.48%	12	2.01%	2	0.82%	31	1.14%
SOUTH COUNTY	0	0.00%	0	0.00%	4	0.88%	8	1.74%	14	2.65%	14	3.43%	8	4.68%	48	2.37%
SOUTH LAKES	0	0.00%	0	0.00%	15	4.34%	5	1.58%	21	7.27%	11	3.79%	10	4.95%	62	4.29%
STUART	0	0.00%	0	0.00%	47	12.70%	24	6.59%	103	25.43%	30	11.36%	26	19.70%	230	14.98%
WEST POTOMAC	0	0.00%	0	0.00%	36	7.19%	25	5.83%	37	8.06%	19	4.74%	12	7.36%	129	6.61%
WEST SPRINGFIELD	0	0.00%	0	0.00%	14	2.71%	9	1.78%	22	4.04%	18	4.09%	10	5.68%	73	3.34%
WESTFIELD	0	0.00%	0	0.00%	19	2.80%	16	2.22%	21	2.90%	16	2.13%	12	5.13%	84	2.70%
WOODSON	0	0.00%	0	#DIV/0!	17	3.72%	6	1.22%	19	3.66%	10	2.29%	6	3.19%	58	2.77%
HIGH TOTALS	1	8.33%	3	12.00%	480	4.02%	232	1.99%	791	6.58%	374	3.48%	250	5.93%	2131	4.21%

TABLE V
RETAINED STUDENTS WHO ATTENDED 2008 SUMMER SCHOOL
AN ANALYSIS OF THEIR 2008-2009 SCHOOL YEAR STATUS

2007-08				2008-2009 Status							
Grade Level	Retained Students	Retained Students Who Attended FCPS Summer School		Promoted		In Same Grade Level		Demoted or Changed Programs		Did Not Return to FCPS	
	No.	No.		No.		No.		No.		No.	
K	220	27	12.3%	2	7.4%	23	85.2%	2	7.4%	0	0.0%
1	115	11	9.6%	1	9.1%	8	72.7%	1	9.1%	1	9.1%
2	39	6	15.4%	1	16.7%	5	83.3%	0	0.0%	0	0.0%
3	18	3	0.0%	0	0.0%	3	0.0%	0	0.0%	0	0.0%
4	9	2	22.2%	0	0.0%	2	100.0%	0	0.0%	0	0.0%
5	4	2	50.0%	2	100.0%	0	0.0%	0	0.0%	0	0.0%
6	31	27	87.1%	24	88.9%	1	3.7%	0	0.0%	2	7.4%
7	403	325	80.6%	294	90.5%	6	1.8%	1	0.3%	24	7.4%
8	367	290	79.0%	278	95.9%	3	1.0%	0	0.0%	9	3.1%
9	480	117	24.4%	51	43.6%	54	46.2%	4	3.4%	8	6.8%
10	232	43	18.5%	25	58.1%	16	37.2%	0	0.0%	2	4.7%
11	791	255	32.2%	69	27.1%	169	66.3%	4	1.6%	13	5.1%
12	374	194	51.9%	155**	79.9%	18	9.3%	0	0.0%	21	10.8%
GT	5	5	100.0%	5	100.0%	0	0.0%	0	0.0%	0	0.0%
Special Ed *	458	187	40.8%	133	71.1%	38	20.3%	6	3.2%	10	5.3%
	3546	1494	42.1%	1040	69.6%	346	23.2%	18	1.2%	90	6.0%

* Special Education - School-Based Self-Contained

** 2008 Summer School Graduates (13 are Special Ed)