



# STATISTICAL REPORT

FAIRFAX COUNTY PUBLIC SCHOOLS  FAIRFAX, VIRGINIA

## REPORT OF STUDENT RETENTIONS 2006-07

### ***Purpose***

The data in this report were collected as part of the 2006-07 Annual School Report which is required by the Virginia Department of Education. This report on student retentions provides information to support the management of Fairfax County Public Schools.

<b><u>Contents</u></b>	<b><u>Page</u></b>
Introduction .....	2
Summary .....	3
Five-Year History of County Retention Rates .....	4
Five-Year History of Retention Rates by Level .....	5
County Retention Rates by Level .....	6
 <i>List of Tables</i>	
Table I: Student Retentions by Grade and Level .....	7
Table II: Student Retentions by School and Grade - Elementary .....	8
Table III: Student Retentions by School and Grade - Middle .....	12
Table IV: Student Retentions by School and Grade - High .....	13
Table V: Retained Students Who Attended 2007 Summer School .....	14
Table VI: Conditionally Promoted Students Who Attended 2007 Summer School .....	15

### **Date of Publication**

**October 2008**

## INTRODUCTION

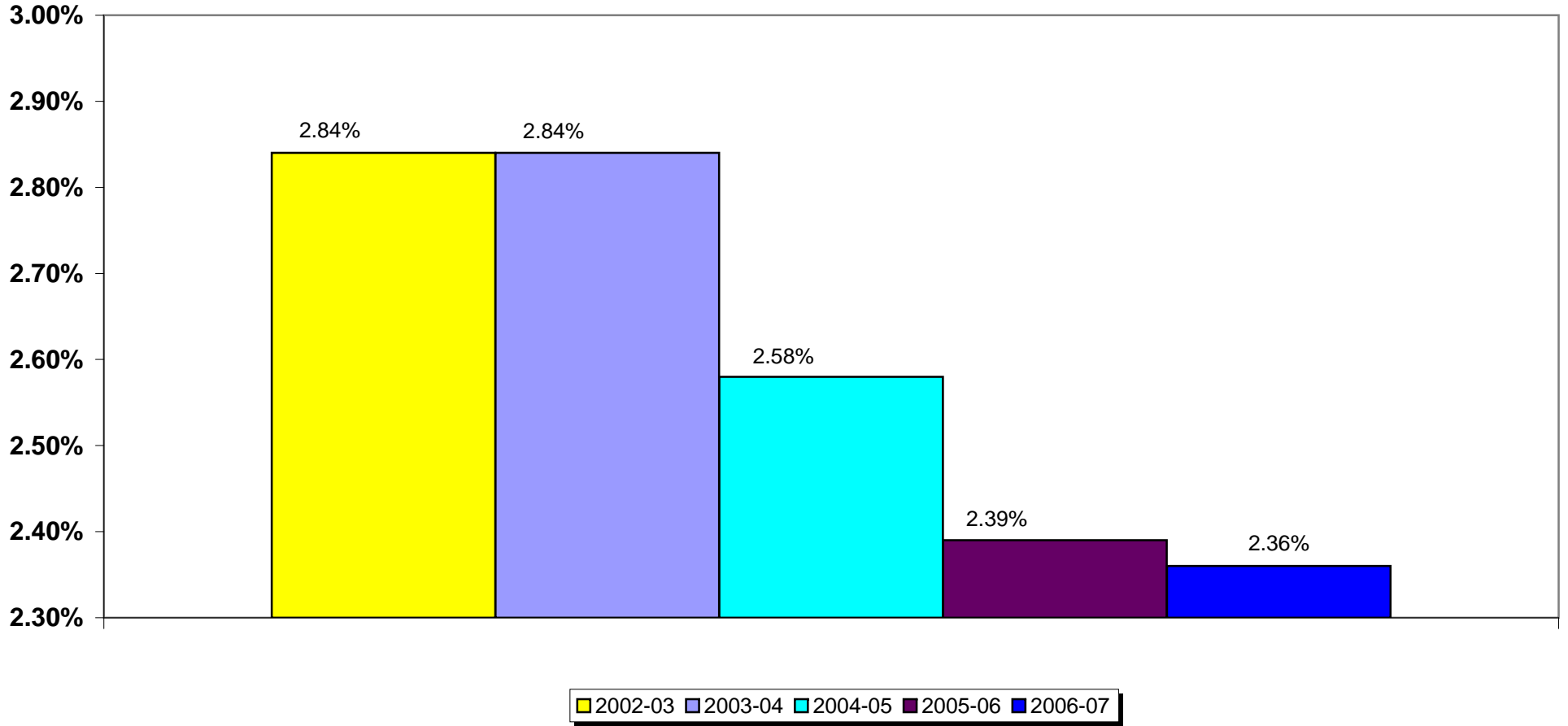
This is a report of retentions for the 2006-07 school year excluding special education centers, Instructional Services alternative centers, Student Services alternative centers, Family and Early Childhood Education (FECEP), preschool, and postgraduate students.

Inquiries regarding this report should be directed to Information Technology at 703-329-7727.

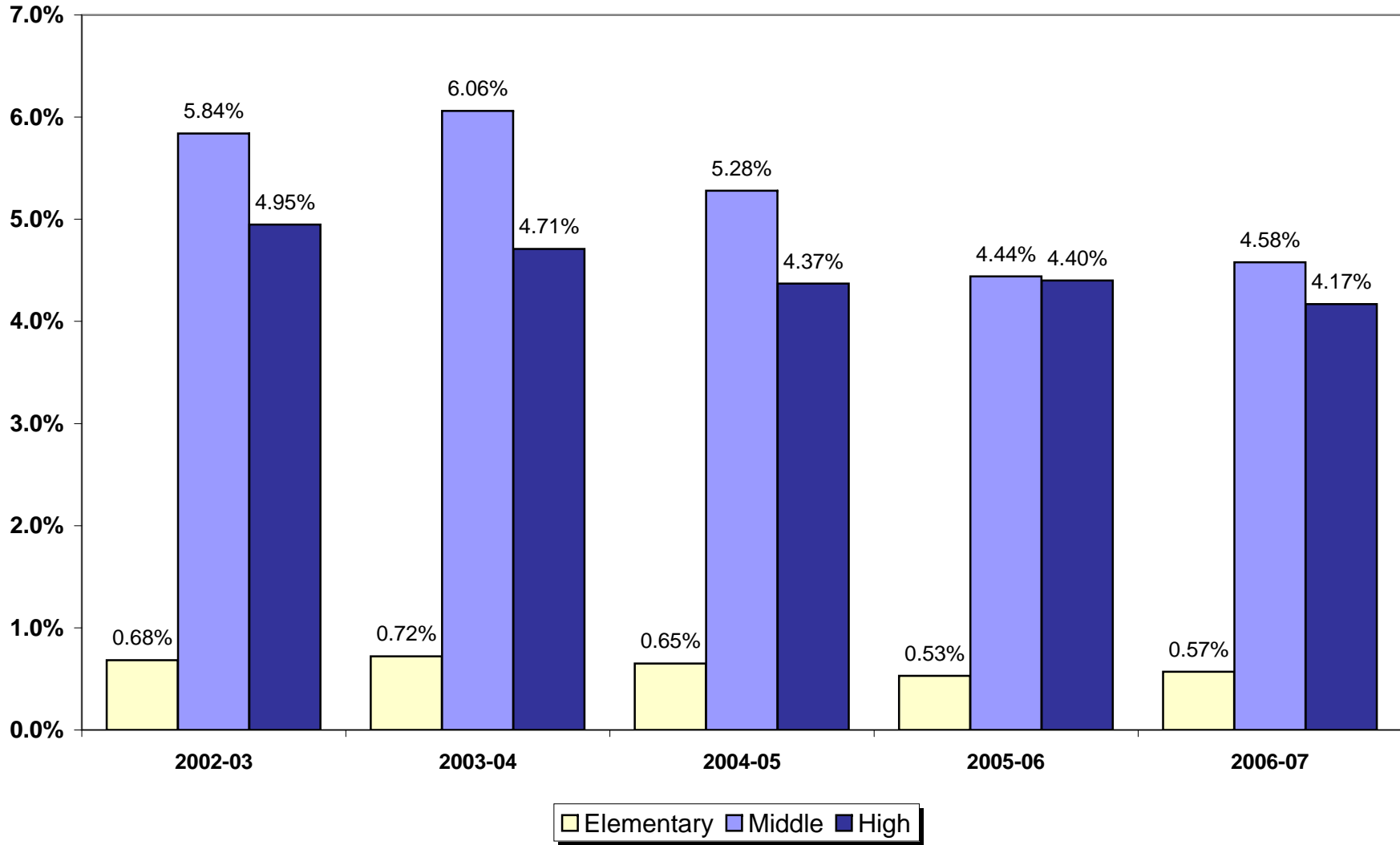
## SUMMARY

- Retentions for the 2006-07 school year were 2.36 percent of the student end-of-year membership. The 2006-07 retention rate is a decrease of .48 percentage points over the past five years. See page 4.
- At the elementary level, K-6, the county retention rates ranged from 0.05 percent in fifth and sixth grades to 1.62 percent in kindergarten. See Table I, page 7.
- At the middle school level, 6-8, county retention rate, by grade level, was 3.08 percent for sixth grade, 4.94 percent for seventh grade, and 4.46 percent for eighth grade. See Table I, page 7.
- At the high school level, 9-12, county retention rates ranged from 2.11 percent for tenth grade to 5.77 percent for eleventh grade. See Table I, page 7.
- The median retention rate for elementary schools was 0.48 percent. Retentions rates among elementary schools ranged from 0.00 percent to 4.17 percent. See Table II, pages 8-11.
- The median retention rate for middle schools was 3.98 percent. Retention rates among middle schools ranged from 0.26 percent to 14.30 percent. See Table III, page 12.
- The median retention rate for high schools was 3.50 percent. Retention rates among high schools ranged from 0.17 percent to 40.68 percent. See Table IV, page 13.
- The percentage of 2006-07 retained students who attended summer school was 53.6. Of these students, 61.8 percent were promoted the following year or graduated from summer school. See Table V, page 14.
- There were 1,019 students conditionally promoted in grades 6-8 as part of the Student Accountability Plan. Of these students, 81.6% attended FCPS summer school. Of those who attended summer school, 95.3% were promoted in 2007-2008. See Table VI, page 15.

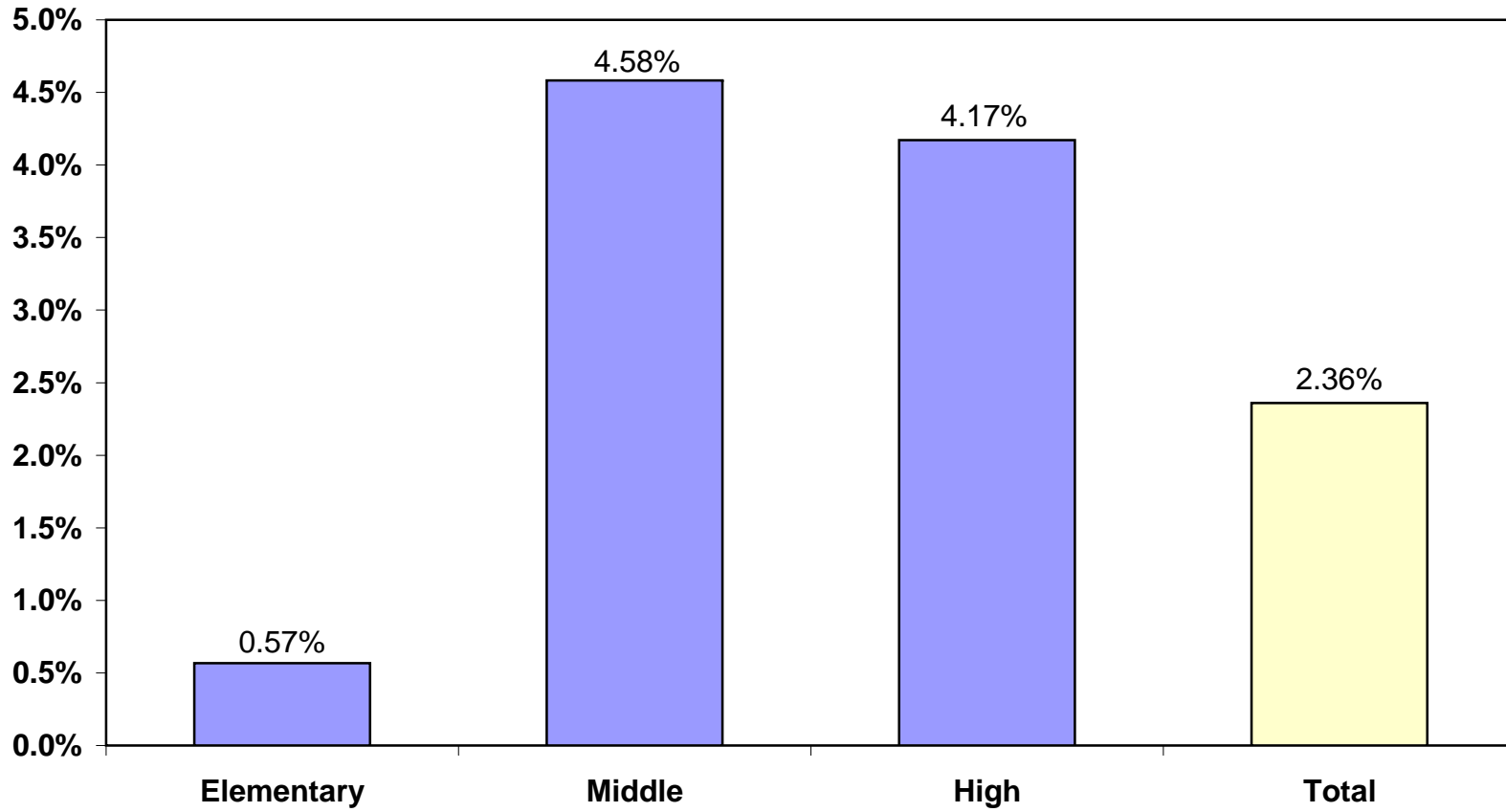
## Five-Year History of County Retention Rates



## Five-Year History of Retention Rates by Level



## County Retention Rates by Level



**TABLE I  
STUDENT RETENTIONS BY GRADE AND LEVEL**

	<b>K</b>	<b>1</b>	<b>2</b>	<b>3</b>	<b>4</b>	<b>5</b>	<b>6</b>	<b>SE*</b>	<b>GT**</b>	<b>Total</b>
	<i>No.</i>	<i>No.</i>	<i>No.</i>	<i>No.</i>	<i>No.</i>	<i>No.</i>	<i>No.</i>	<i>No.</i>	<i>No.</i>	<i>No.</i>
<b>Elementary</b>	174 1.62%	134 1.17%	53 0.47%	22 0.22%	6 0.06%	5 0.05%	5 0.05%	71 1.53%	0 0	470 0.57%

	<b>6</b>	<b>7</b>	<b>8</b>	<b>SE*</b>	<b>GT**</b>	<b>Total</b>
	<i>No.</i>	<i>No.</i>	<i>No.</i>	<i>No.</i>	<i>No.</i>	<i>No.</i>
<b>Middle</b>	25 3.08%	494 4.94%	449 4.46%	207 8.36%	3 0.13%	1,178 4.58%

*Note: 6th grade students at three middle schools: Glasgow, Holmes, and Poe*

	<b>7***</b>	<b>8***</b>	<b>9</b>	<b>10</b>	<b>11</b>	<b>12</b>	<b>SE*</b>	<b>Total</b>
	<i>No.</i>	<i>No.</i>						
<b>High</b>	3 17.65%	5 11.11%	518 4.34%	249 2.11%	669 5.77%	422 3.88%	237 5.79%	2,103 4.17%

\* *Special Education - School-Based Self-Contained*

\*\* *Gifted/Talented - Center-Based*

\*\*\* *7th and 8th Graders at the Alternative Centers*



**TABLE II  
STUDENT RETENTIONS BY SCHOOL AND GRADE  
ELEMENTARY SCHOOLS**

	K		1		2		3		4		5		6		SE		GTC		Total	
	No.		No.		No.		No.		No.		No.		No.		No.		No.		No.	
DRANESVILLE	0	0.00%	0	0.00%	0	0.00%	0	0.00%	0	0.00%	0	0.00%	0	0.00%	0	0.00%	0	0.00%	0	0.00%
EAGLE VIEW	1	0.93%	0	0.00%	0	0.00%	0	0.00%	0	0.00%	0	0.00%	0	0.00%	0	0.00%	0	0.00%	1	0.17%
FAIRFAX VILLA	1	2.00%	0	0.00%	0	0.00%	0	0.00%	0	0.00%	0	0.00%	0	0.00%	0	0.00%	0	0.00%	1	0.29%
FAIRHILL	4	4.49%	5	5.88%	1	1.43%	0	0.00%	0	0.00%	0	0.00%	0	0.00%	2	5.88%	0	0.00%	12	2.21%
FAIRVIEW	0	0.00%	2	2.70%	0	0.00%	0	0.00%	0	0.00%	0	0.00%	0	0.00%	0	0.00%	0	0.00%	2	0.34%
FLINT HILL	0	0.00%	1	1.01%	0	0.00%	0	0.00%	0	0.00%	0	0.00%	1	0.88%	0	0.00%	0	0.00%	2	0.28%
FLORIS	3	3.57%	0	0.00%	0	0.00%	1	1.03%	0	0.00%	0	0.00%	0	0.00%	1	2.63%	0	0.00%	5	0.61%
FOREST EDGE	2	2.33%	3	3.00%	0	0.00%	0	0.00%	0	0.00%	0	0.00%	0	0.00%	1	3.85%	0	0.00%	6	0.76%
FORESTDALE	1	1.56%	1	1.75%	0	0.00%	1	2.38%	0	0.00%	0	0.00%	0	0.00%	2	6.90%	0	0.00%	5	1.19%
FORESTVILLE	1	1.15%	0	0.00%	0	0.00%	0	0.00%	0	0.00%	0	0.00%	0	0.00%	1	5.26%	0	0.00%	2	0.26%
FORT BELVOIR	4	2.06%	0	0.00%	1	0.60%	0	0.00%	0	0.00%	0	0.00%	1	0.69%	0	0.00%	0	0.00%	6	0.48%
FORT HUNT	0	0.00%	5	5.26%	1	1.09%	0	0.00%	0	0.00%	0	0.00%	0	0.00%	0	0.00%	0	0.00%	6	1.09%
FOX MILL	1	1.43%	3	2.50%	0	0.00%	0	0.00%	0	0.00%	0	0.00%	0	0.00%	0	0.00%	0	0.00%	4	0.55%
FRANCONIA	1	1.59%	1	1.20%	2	2.63%	0	0.00%	1	1.61%	0	0.00%	0	0.00%	1	5.26%	0	0.00%	6	1.27%
FREEDOM HILL	0	0.00%	1	1.41%	0	0.00%	0	0.00%	0	0.00%	0	0.00%	0	0.00%	0	0.00%	0	0.00%	1	0.21%
GARFIELD	2	4.44%	0	0.00%	0	0.00%	0	0.00%	0	0.00%	0	0.00%	0	0.00%	1	2.56%	0	0.00%	3	0.87%
GLEN FOREST	3	2.34%	0	0.00%	0	0.00%	0	0.00%	0	0.00%	0	0.00%	0	0.00%	1	3.70%	0	0.00%	4	0.58%
GRAHAM ROAD	0	0.00%	0	0.00%	0	0.00%	0	0.00%	0	0.00%	0	0.00%	0	0.00%	0	0.00%	0	0.00%	0	0.00%
GREAT FALLS	0	0.00%	1	1.30%	0	0.00%	0	0.00%	0	0.00%	0	0.00%	0	0.00%	1	6.25%	0	0.00%	2	0.36%
GREENBRIAR EAST	1	1.19%	0	0.00%	0	0.00%	0	0.00%	1	1.32%	1	1.27%	0	0.00%	0	0.00%	0	0.00%	3	0.51%
GREENBRIAR WEST	0	0.00%	0	0.00%	0	0.00%	0	0.00%	0	0.00%	0	0.00%	0	0.00%	2	6.45%	0	0.00%	2	0.28%
GROVETON	0	0.00%	0	0.00%	0	0.00%	0	0.00%	0	0.00%	0	0.00%	0	0.00%	0	0.00%	0	0.00%	0	0.00%
GUNSTON	4	4.35%	2	2.47%	2	2.50%	0	0.00%	0	0.00%	0	0.00%	0	0.00%	0	0.00%	0	0.00%	8	1.29%
HALLEY	6	6.59%	1	1.41%	0	0.00%	0	0.00%	0	0.00%	0	0.00%	0	0.00%	0	0.00%	0	0.00%	7	1.22%
HAYCOCK	0	0.00%	0	0.00%	0	0.00%	0	0.00%	0	0.00%	0	0.00%	0	0.00%	1	4.55%	0	0.00%	1	0.15%
HAYFIELD	0	0.00%	0	0.00%	0	0.00%	0	0.00%	0	0.00%	0	0.00%	0	0.00%	0	0.00%	0	0.00%	0	0.00%
HERNDON	0	0.00%	0	0.00%	0	0.00%	0	0.00%	0	0.00%	0	0.00%	0	0.00%	0	0.00%	0	0.00%	0	0.00%
HOLLIN MEADOWS	0	0.00%	1	1.32%	0	0.00%	0	0.00%	0	0.00%	0	0.00%	0	0.00%	1	2.04%	0	0.00%	2	0.34%
HUNT VALLEY	2	3.08%	2	2.38%	1	1.37%	0	0.00%	0	0.00%	0	0.00%	1	0.99%	1	5.26%	0	0.00%	7	1.16%
HUNTERS WOODS	1	1.52%	1	1.09%	0	0.00%	0	0.00%	0	0.00%	0	0.00%	0	0.00%	1	2.94%	0	0.00%	3	0.32%
HUTCHISON	0	0.00%	0	0.00%	0	0.00%	0	0.00%	0	0.00%	0	0.00%	0	0.00%	1	2.63%	0	0.00%	1	0.17%
HYBLA VALLEY	0	0.00%	0	0.00%	0	0.00%	0	0.00%	0	0.00%	1	1.32%	0	0.00%	0	0.00%	0	0.00%	1	0.16%
ISLAND CREEK	2	1.96%	1	1.09%	0	0.00%	1	1.01%	0	0.00%	0	0.00%	0	0.00%	0	0.00%	0	0.00%	4	0.56%
KEENE MILL	0	0.00%	0	0.00%	1	1.56%	0	0.00%	0	0.00%	0	0.00%	0	0.00%	2	5.88%	0	0.00%	3	0.50%
KENT GARDENS	0	0.00%	4	3.08%	1	0.69%	1	0.72%	0	0.00%	0	0.00%	0	0.00%	2	11.11%	0	0.00%	8	0.85%
KINGS GLEN	0	0.00%	0	0.00%	0	0.00%	0	0.00%	0	0.00%	0	0.00%	0	0.00%	1	2.86%	0	0.00%	1	0.20%

**TABLE II  
STUDENT RETENTIONS BY SCHOOL AND GRADE  
ELEMENTARY SCHOOLS**

	K		1		2		3		4		5		6		SE		GTC		Total	
	No.		No.		No.		No.		No.		No.		No.		No.		No.		No.	
KINGS PARK	0	0.00%	2	1.29%	0	0.00%	0	0.00%	0	0.00%	0	0.00%	0	0.00%	2	6.90%	0	0.00%	4	0.59%
LAKE ANNE	0	0.00%	0	0.00%	0	0.00%	0	0.00%	0	0.00%	0	0.00%	0	0.00%	0	0.00%	0	0.00%	0	0.00%
LANE	0	0.00%	0	0.00%	1	0.96%	0	0.00%	0	0.00%	1	1.18%	0	0.00%	0	0.00%	0	0.00%	2	0.30%
LAUREL RIDGE	2	2.56%	2	1.65%	1	0.91%	0	0.00%	0	0.00%	0	0.00%	0	0.00%	0	0.00%	0	0.00%	5	0.60%
LEES CORNER	0	0.00%	2	2.50%	1	1.06%	0	0.00%	0	0.00%	0	0.00%	0	0.00%	1	1.43%	0	0.00%	4	0.58%
LEMON ROAD	0	0.00%	2	4.65%	1	2.22%	1	3.33%	0	0.00%	0	0.00%	0	0.00%	2	7.41%	0	0.00%	6	1.97%
LITTLE RUN	2	5.41%	1	2.22%	0	0.00%	0	0.00%	0	0.00%	0	0.00%	0	0.00%	0	0.00%	0	0.00%	3	0.88%
LONDON TOWNE	0	0.00%	0	0.00%	0	0.00%	0	0.00%	0	0.00%	0	0.00%	0	0.00%	0	0.00%	0	0.00%	0	0.00%
LORTON STATION	1	0.79%	1	0.83%	0	0.00%	0	0.00%	0	0.00%	0	0.00%	0	0.00%	1	4.00%	0	0.00%	3	0.30%
LYNBROOK	1	1.89%	0	0.00%	0	0.00%	0	0.00%	0	0.00%	0	0.00%	0	0.00%	0	0.00%	0	0.00%	1	0.28%
MANTUA	0	0.00%	3	3.00%	0	0.00%	0	0.00%	0	0.00%	0	0.00%	0	0.00%	0	0.00%	0	0.00%	3	0.34%
MARSHALL ROAD	1	1.72%	1	1.37%	2	3.28%	1	1.35%	1	1.45%	0	0.00%	0	0.00%	0	0.00%	0	0.00%	6	1.09%
MCNAIR	1	0.65%	3	2.21%	1	0.81%	0	0.00%	0	0.00%	0	0.00%	0	0.00%	0	0.00%	0	0.00%	5	0.58%
MOSBY WOODS	0	0.00%	2	2.50%	1	1.33%	0	0.00%	0	0.00%	0	0.00%	0	0.00%	0	0.00%	0	0.00%	3	0.49%
MOUNT EAGLE	0	0.00%	1	2.38%	0	0.00%	0	0.00%	0	0.00%	0	0.00%	0	0.00%	0	0.00%	0	0.00%	1	0.41%
MOUNT VERNON WOODS	0	0.00%	0	0.00%	0	0.00%	0	0.00%	0	0.00%	0	0.00%	0	0.00%	0	0.00%	0	0.00%	0	0.00%
NAVY	0	0.00%	3	2.19%	2	1.49%	0	0.00%	0	0.00%	0	0.00%	0	0.00%	4	10.00%	0	0.00%	9	1.07%
NEWINGTON FOREST	2	2.27%	1	1.10%	0	0.00%	1	1.69%	0	0.00%	0	0.00%	0	0.00%	0	0.00%	0	0.00%	4	0.65%
NORTH SPRINGFIELD	0	0.00%	0	0.00%	0	0.00%	0	0.00%	0	0.00%	0	0.00%	0	0.00%	0	0.00%	0	0.00%	0	0.00%
OAK HILL	0	0.00%	0	0.00%	1	1.01%	0	0.00%	0	0.00%	0	0.00%	0	0.00%	0	0.00%	0	0.00%	1	0.11%
OAK VIEW	2	2.11%	0	0.00%	0	0.00%	0	0.00%	0	0.00%	0	0.00%	0	0.00%	0	0.00%	0	0.00%	2	0.28%
OAKTON	1	1.30%	0	0.00%	0	0.00%	0	0.00%	0	0.00%	1	1.27%	0	0.00%	0	0.00%	0	0.00%	2	0.32%
OLDE CREEK	0	0.00%	2	3.77%	0	0.00%	0	0.00%	0	0.00%	0	0.00%	0	0.00%	0	0.00%	0	0.00%	2	0.54%
ORANGE HUNT	0	0.00%	1	0.80%	0	0.00%	0	0.00%	0	0.00%	0	0.00%	0	0.00%	0	0.00%	0	0.00%	1	0.11%
PARKLAWN	3	2.88%	0	0.00%	0	0.00%	0	0.00%	0	0.00%	0	0.00%	0	0.00%	0	0.00%	0	0.00%	3	0.53%
PINE SPRING	2	2.90%	0	0.00%	1	1.67%	1	2.04%	0	0.00%	0	0.00%	0	0.00%	0	0.00%	0	0.00%	4	0.94%
POPLAR TREE	4	3.15%	1	1.08%	0	0.00%	0	0.00%	0	0.00%	0	0.00%	1	1.20%	1	1.67%	0	0.00%	7	0.92%
POWELL	2	1.43%	2	1.43%	1	0.79%	1	0.81%	0	0.00%	0	0.00%	0	0.00%	2	6.90%	0	0.00%	8	0.87%
PROVIDENCE	0	0.00%	0	0.00%	0	0.00%	0	0.00%	0	0.00%	0	0.00%	0	0.00%	0	0.00%	0	0.00%	0	0.00%
RAVENSWORTH	0	0.00%	2	2.63%	0	0.00%	0	0.00%	0	0.00%	0	0.00%	0	0.00%	0	0.00%	0	0.00%	2	0.37%
RIVERSIDE	0	0.00%	0	0.00%	0	0.00%	0	0.00%	0	0.00%	0	0.00%	1	2.33%	0	0.00%	0	0.00%	1	0.20%
ROLLING VALLEY	2	3.03%	0	0.00%	2	2.47%	0	0.00%	0	0.00%	0	0.00%	0	0.00%	0	0.00%	0	0.00%	4	0.77%
ROSE HILL	0	0.00%	1	0.96%	0	0.00%	0	0.00%	0	0.00%	0	0.00%	0	0.00%	0	0.00%	0	0.00%	1	0.13%
SANGSTER	0	0.00%	0	0.00%	0	0.00%	0	0.00%	0	0.00%	0	0.00%	0	0.00%	0	0.00%	0	0.00%	0	0.00%
SARATOGA	9	7.69%	3	3.23%	1	1.20%	0	0.00%	0	0.00%	0	0.00%	0	0.00%	3	3.66%	0	0.00%	16	2.15%
SHERMAN	0	0.00%	2	3.85%	0	0.00%	0	0.00%	0	0.00%	0	0.00%	0	0.00%	1	4.35%	0	0.00%	3	0.82%

**TABLE II**  
**STUDENT RETENTIONS BY SCHOOL AND GRADE**  
**ELEMENTARY SCHOOLS**

	K		1		2		3		4		5		6		SE		GTC		Total	
	No.		No.		No.		No.		No.		No.		No.		No.		No.		No.	
SHREVEWOOD	1	1.30%	1	1.61%	0	0.00%	0	0.00%	0	0.00%	0	0.00%	0	0.00%	0	0.00%	0	0.00%	2	0.46%
SILVERBROOK	0	0.00%	2	1.20%	2	1.18%	0	0.00%	0	0.00%	0	0.00%	0	0.00%	0	0.00%	0	0.00%	4	0.32%
SLEEPY HOLLOW	0	0.00%	1	2.04%	0	0.00%	0	0.00%	0	0.00%	0	0.00%	0	0.00%	2	5.41%	0	0.00%	3	0.91%
SPRING HILL	3	3.57%	0	0.00%	0	0.00%	0	0.00%	0	0.00%	0	0.00%	0	0.00%	0	0.00%	0	0.00%	3	0.36%
SPRINGFIELD ESTATES	7	8.64%	1	1.61%	3	4.62%	1	1.75%	0	0.00%	0	0.00%	0	0.00%	0	0.00%	0	0.00%	12	1.84%
STENWOOD	0	0.00%	0	0.00%	0	0.00%	0	0.00%	0	0.00%	0	0.00%	0	0.00%	0	0.00%	0	0.00%	0	0.00%
STRATFORD LANDING	0	0.00%	4	5.13%	0	0.00%	0	0.00%	0	0.00%	0	0.00%	0	0.00%	0	0.00%	0	0.00%	4	0.57%
SUNRISE VALLEY	0	0.00%	0	0.00%	0	0.00%	0	0.00%	0	0.00%	0	0.00%	0	0.00%	1	5.56%	0	0.00%	1	0.19%
TERRA-CENTRE	1	1.20%	0	0.00%	0	0.00%	0	0.00%	0	0.00%	0	0.00%	0	0.00%	0	0.00%	0	0.00%	1	0.17%
TERRASET	4	5.80%	0	0.00%	0	0.00%	0	0.00%	0	0.00%	0	0.00%	0	0.00%	0	0.00%	0	0.00%	4	1.01%
TIMBER LANE	2	3.92%	0	0.00%	0	0.00%	0	0.00%	0	0.00%	0	0.00%	0	0.00%	2	6.45%	0	0.00%	4	0.97%
UNION MILL	0	0.00%	2	1.74%	0	0.00%	0	0.00%	0	0.00%	0	0.00%	0	0.00%	2	3.77%	0	0.00%	4	0.49%
VIENNA	3	5.88%	0	0.00%	0	0.00%	0	0.00%	0	0.00%	0	0.00%	0	0.00%	0	0.00%	0	0.00%	3	0.87%
VIRGINIA RUN	0	0.00%	0	0.00%	1	0.88%	0	0.00%	0	0.00%	0	0.00%	0	0.00%	0	0.00%	0	0.00%	1	0.12%
WAKEFIELD FOREST	2	3.28%	0	0.00%	0	0.00%	0	0.00%	1	1.61%	0	0.00%	0	0.00%	0	0.00%	0	0.00%	3	0.63%
WAPLES MILL	0	0.00%	0	0.00%	0	0.00%	0	0.00%	0	0.00%	0	0.00%	0	0.00%	1	2.56%	0	0.00%	1	0.12%
WASHINGTON MILL	0	0.00%	3	4.23%	0	0.00%	1	1.49%	0	0.00%	0	0.00%	0	0.00%	0	0.00%	0	0.00%	4	0.78%
WAYNEWOOD	2	2.20%	1	1.10%	5	5.21%	1	1.37%	0	0.00%	0	0.00%	0	0.00%	0	0.00%	0	0.00%	9	1.53%
WEST SPRINGFIELD	0	0.00%	1	1.49%	0	0.00%	0	0.00%	0	0.00%	0	0.00%	0	0.00%	1	7.14%	0	0.00%	2	0.48%
WESTBRIAR	0	0.00%	0	0.00%	0	0.00%	0	0.00%	0	0.00%	0	0.00%	0	0.00%	0	0.00%	0	0.00%	0	0.00%
WESTGATE	0	0.00%	0	0.00%	0	0.00%	0	0.00%	0	0.00%	0	0.00%	0	0.00%	3	13.04%	0	0.00%	3	0.96%
WESTLAWN	3	3.33%	0	0.00%	0	0.00%	0	0.00%	0	0.00%	0	0.00%	0	0.00%	1	1.49%	0	0.00%	4	0.70%
WEYANOKE	1	1.27%	0	0.00%	0	0.00%	0	0.00%	0	0.00%	0	0.00%	0	0.00%	0	0.00%	0	0.00%	1	0.23%
WHITE OAKS	0	0.00%	0	0.00%	0	0.00%	0	0.00%	0	0.00%	0	0.00%	0	0.00%	0	0.00%	0	0.00%	0	0.00%
WILLOW SPRINGS	0	0.00%	0	0.00%	0	0.00%	0	0.00%	0	0.00%	0	0.00%	0	0.00%	0	0.00%	0	0.00%	0	0.00%
WOLFTRAP	0	0.00%	1	1.27%	0	0.00%	0	0.00%	0	0.00%	0	0.00%	0	0.00%	0	0.00%	0	0.00%	1	0.16%
WOODBURN	1	1.47%	0	0.00%	1	2.04%	0	0.00%	0	0.00%	0	0.00%	0	0.00%	0	0.00%	0	0.00%	2	0.50%
WOODLAWN	1	1.72%	2	2.74%	0	0.00%	0	0.00%	0	0.00%	0	0.00%	0	0.00%	0	0.00%	0	0.00%	3	0.65%
WOODLEY HILLS	5	5.15%	4	4.71%	0	0.00%	4	5.48%	0	0.00%	0	0.00%	0	0.00%	0	0.00%	0	0.00%	13	2.34%
<b>Elementary Totals</b>	<b>174</b>	<b>1.62%</b>	<b>134</b>	<b>1.17%</b>	<b>53</b>	<b>0.47%</b>	<b>22</b>	<b>0.22%</b>	<b>6</b>	<b>0.06%</b>	<b>5</b>	<b>0.05%</b>	<b>5</b>	<b>0.05%</b>	<b>71</b>	<b>1.53%</b>	<b>0</b>	<b>0.00%</b>	<b>470</b>	<b>0.57%</b>

**TABLE III  
STUDENT RETENTIONS BY SCHOOL AND GRADE  
MIDDLE SCHOOLS**

School Name	6		7		8		SE		GTC		Total	
	No.		No.		No.		No.		No.		No.	
ALC AT BURKE	0	0.00%	0	0.00%	1	12.50%	0	0.00%	0	0.00%	1	5.88%
CARSON	0	0.00%	4	1.08%	4	1.16%	4	4.12%	0	0.00%	12	1.05%
COOPER	0	0.00%	7	1.65%	5	1.08%	2	4.65%	0	0.00%	14	1.51%
FRANKLIN	0	0.00%	0	0.00%	2	0.48%	1	0.93%	0	0.00%	3	0.32%
FROST	0	0.00%	4	1.16%	7	1.94%	6	5.56%	1	0.39%	18	1.68%
GLASGOW	7	2.41%	27	9.96%	43	15.25%	12	10.81%	0	0.00%	89	8.21%
HAYFIELD	0	0.00%	31	7.81%	20	5.76%	9	10.59%	0	0.00%	60	7.24%
HERNDON	0	0.00%	43	9.62%	31	7.11%	25	15.24%	0	0.00%	99	9.46%
HOLMES	3	1.36%	10	4.35%	20	9.22%	0	0.00%	0	0.00%	33	4.41%
HUGHES	0	0.00%	2	0.78%	9	2.92%	4	4.17%	0	0.00%	15	1.81%
IRVING	0	0.00%	8	1.69%	14	2.82%	1	0.95%	0	0.00%	23	2.14%
JACKSON	0	0.00%	65	16.93%	36	9.50%	26	20.80%	0	0.00%	127	14.30%
KEY	0	0.00%	44	12.43%	22	6.08%	13	12.50%	0	0.00%	79	9.63%
KILMER	0	0.00%	6	1.89%	9	3.31%	3	4.55%	0	0.00%	18	1.69%
LAKE BRADDOCK	0	0.00%	17	3.62%	13	2.55%	2	2.22%	1	0.39%	33	2.50%
LANIER	0	0.00%	16	3.69%	26	6.44%	19	14.96%	0	0.00%	61	6.32%
LIBERTY	0	0.00%	17	3.43%	19	3.73%	8	8.33%	0	0.00%	44	3.99%
LONGFELLOW	0	0.00%	13	3.85%	9	2.73%	8	11.94%	1	0.35%	31	3.05%
POE	15	4.98%	8	2.45%	15	4.39%	8	5.76%	0	0.00%	46	4.15%
ROBINSON	0	0.00%	4	0.74%	8	1.34%	2	1.89%	0	0.00%	14	1.13%
ROCKY RUN	0	0.00%	10	4.00%	6	2.43%	5	10.42%	0	0.00%	21	2.56%
SANDBURG	0	0.00%	65	14.32%	38	8.92%	17	17.17%	0	0.00%	120	10.70%
SOUTH COUNTY	0	0.00%	17	3.66%	14	2.83%	11	11.46%	0	0.00%	42	3.98%
STONE	0	0.00%	5	1.14%	6	1.39%	6	6.59%	0	0.00%	17	1.77%
THOREAU	0	0.00%	0	0.00%	1	0.30%	1	1.23%	0	0.00%	2	0.26%
TWAIN	0	0.00%	21	5.97%	31	8.81%	5	8.77%	0	0.00%	57	6.64%
WHITMAN	0	0.00%	50	12.02%	40	10.13%	9	10.47%	0	0.00%	99	11.04%
<b>Middle Totals</b>	<b>25</b>	<b>3.08%</b>	<b>494</b>	<b>4.94%</b>	<b>449</b>	<b>4.46%</b>	<b>207</b>	<b>8.36%</b>	<b>3</b>	<b>0.13%</b>	<b>1,178</b>	<b>4.58%</b>

**TABLE IV  
STUDENT RETENTIONS BY SCHOOL AND GRADE  
HIGH SCHOOLS**

School Name	7		8		9		10		11		12		SE		Total	
	No.		No.		No.		No.		No.		No.		No.		No.	
ALC AT BRYANT	1	12.50%	5	33.33%	16	61.54%	2	22.22%	0	0.00%	0	0.00%	0	0.00%	24	40.68%
ALC AT DUNN LORING	1	25.00%	0	0.00%	0	0.00%	0	0.00%	0	0.00%	0	0.00%	0	0.00%	1	2.22%
ALC AT ELEVEN OAKS	1	20.00%	0	0.00%	4	18.18%	0	0.00%	0	#DIV/0!	0	0.00%	0	0.00%	5	9.43%
ANNANDALE	0	0.00%	0	0.00%	39	7.04%	12	2.28%	74	14.74%	50	10.14%	17	7.94%	192	8.38%
CENTREVILLE	0	0.00%	0	0.00%	18	3.53%	14	2.69%	24	4.56%	13	2.69%	9	4.74%	78	3.50%
CHANTILLY	0	0.00%	0	0.00%	20	3.12%	11	1.58%	14	2.12%	15	2.35%	13	6.40%	73	2.57%
EDISON	0	0.00%	0	0.00%	26	6.37%	9	2.54%	45	10.42%	32	8.10%	13	7.88%	125	7.12%
FAIRFAX	0	0.00%	0	0.00%	21	4.09%	12	2.54%	21	4.64%	13	2.65%	15	9.20%	82	3.92%
FALLS CHURCH	0	0.00%	0	0.00%	26	8.81%	19	5.86%	40	14.60%	16	5.97%	19	11.59%	120	9.06%
HAYFIELD	0	0.00%	0	0.00%	17	4.67%	7	2.24%	12	3.72%	20	5.87%	3	2.50%	59	4.04%
HERNDON	0	0.00%	0	0.00%	33	6.41%	17	3.44%	44	8.56%	15	3.40%	17	10.90%	126	5.94%
JEFFERSON SCI/TECH	0	0.00%	0	0.00%	0	0.00%	0	0.00%	1	0.23%	2	0.47%	0	0.00%	3	0.17%
LAKE BRADDOCK	0	0.00%	0	0.00%	22	4.01%	10	1.68%	25	3.91%	24	4.25%	6	4.29%	87	3.50%
LANGLEY	0	0.00%	0	0.00%	2	0.40%	0	0.00%	3	0.64%	7	1.61%	3	2.01%	15	0.74%
LEE	0	0.00%	0	0.00%	48	11.48%	20	4.82%	81	17.05%	29	6.68%	16	10.46%	194	10.24%
MADISON	0	0.00%	0	0.00%	4	0.98%	7	1.59%	11	2.35%	2	0.45%	1	0.74%	25	1.32%
MARSHALL	0	0.00%	0	0.00%	10	3.28%	2	0.62%	13	4.58%	5	1.82%	1	0.76%	31	2.35%
MCLEAN	0	0.00%	0	0.00%	10	2.36%	13	3.05%	14	3.34%	10	2.49%	5	4.17%	52	2.91%
MOUNT VERNON	0	0.00%	0	0.00%	39	9.31%	15	3.91%	29	8.45%	17	5.76%	26	11.76%	126	7.58%
OAKTON	0	0.00%	0	0.00%	7	1.25%	9	1.70%	18	3.25%	10	2.04%	7	3.59%	51	2.19%
ROBINSON	0	0.00%	0	0.00%	10	1.61%	9	1.45%	13	2.07%	13	1.98%	3	1.19%	48	1.73%
SOUTH COUNTY	0	0.00%	0	0.00%	16	3.31%	10	1.90%	11	2.60%	12	3.31%	9	5.56%	58	2.97%
SOUTH LAKES	0	0.00%	0	0.00%	20	6.31%	9	2.96%	9	3.11%	13	4.22%	5	2.56%	56	3.96%
STUART	0	0.00%	0	0.00%	31	7.97%	11	3.27%	92	26.44%	36	12.63%	12	10.62%	182	12.37%
WEST POTOMAC	0	0.00%	0	0.00%	31	6.80%	16	3.49%	36	8.35%	25	6.48%	19	10.50%	127	6.64%
WEST SPRINGFIELD	0	0.00%	0	0.00%	15	2.93%	4	0.75%	12	2.63%	17	3.36%	10	6.45%	58	2.68%
WESTFIELD	0	0.00%	0	0.00%	19	2.58%	7	0.93%	15	1.90%	23	3.39%	5	2.34%	69	2.17%
WOODSON	0	0.00%	0	0.00%	14	2.72%	4	0.78%	12	2.56%	3	0.72%	3	1.47%	36	1.70%
<b>High Totals</b>	<b>3</b>	<b>17.65%</b>	<b>5</b>	<b>11.11%</b>	<b>518</b>	<b>4.34%</b>	<b>249</b>	<b>2.11%</b>	<b>669</b>	<b>5.77%</b>	<b>422</b>	<b>3.87%</b>	<b>237</b>	<b>5.79%</b>	<b>2,103</b>	<b>4.17%</b>

**TABLE V**  
**RETAINED STUDENTS WHO ATTENDED 2007 SUMMER SCHOOL**  
**AN ANALYSIS OF THEIR 2007-2008 SCHOOL YEAR STATUS**

2006-07				2007-2008 Status							
Grade Level	Retained Students	Retained Students Who Attended FCPS Summer School		Promoted		In Same Grade Level		Demoted or Changed Programs		Did Not Return to FCPS	
	No.	No.		No.		No.		No.		No.	
K	174	85	48.9%	4	4.7%	74	87.1%	2	2.4%	5	5.9%
1	134	79	59.0%	3	3.8%	70	88.6%	3	3.8%	3	3.8%
2	53	27	50.9%	6	22.2%	18	66.7%	2	7.4%	1	3.7%
3	22	9	0.0%	1	0.0%	8	0.0%	0	0.0%	0	0.0%
4	6	2	33.3%	0	0.0%	2	100.0%	0	0.0%	0	0.0%
5	5	0	0.0%	0	0.0%	0	0.0%	0	0.0%	0	0.0%
6	30	24	80.0%	20	83.3%	2	8.3%	0	0.0%	2	8.3%
7	497	362	72.8%	329	90.9%	10	2.8%	1	0.3%	22	6.1%
8	454	370	81.5%	334	90.3%	11	3.0%	0	0.0%	25	6.8%
9	518	168	32.4%	83	49.4%	76	45.2%	1	0.6%	8	4.8%
10	249	71	28.5%	30	42.3%	33	46.5%	2	2.8%	6	8.5%
11	669	304	45.4%	75	24.7%	216	71.1%	1	0.3%	12	3.9%
12	422	231	54.7%	170 **	73.6%	17	7.4%	0	0.0%	50	21.6%
GT	3	2	66.7%	2	100.0%	0	0.0%	0	0.0%	0	0.0%
Special Ed *	515	275	53.4%	185	67.3%	70	25.5%	1	0.4%	13	4.7%
	<b>3751</b>	<b>2009</b>	<b>53.6%</b>	<b>1242</b>	<b>61.8%</b>	<b>607</b>	<b>30.2%</b>	<b>13</b>	<b>0.6%</b>	<b>147</b>	<b>7.3%</b>

\* Special Education - School-Based Self-Contained

\*\* 2007 Summer School Graduates (6 are Special Ed)

**TABLE VI**  
**CONDITIONALLY PROMOTED STUDENTS WHO ATTENDED 2007 SUMMER SCHOOL**  
**AN ANALYSIS OF THEIR 2007-2008 SCHOOL YEAR STATUS**

Grade Level	2006-07			2007-2008 Status					
	Conditionally Promoted Students	Conditionally Promoted Students Who Attended FCPS Summer School		Promoted After Summer School		Retained after Summer School		Did Not Return to FCPS	
	No.	No.	No.	No.	No.	No.	No.	No.	No.
<b>6</b>	161	136	84.5%	129	94.9%	0	0.0%	7	5.1%
<b>7</b>	383	303	79.1%	290	95.7%	1	0.3%	12	4.0%
<b>8</b>	218	173	79.4%	166	96.0%	1	0.6%	6	3.5%
<b>GT</b>	3	2	0.0%	2	0.0%	0	0.0%	0	0.0%
<b>Special Ed *</b>	254	217	85.4%	205	94.5%	2	0.9%	10	4.6%
<b>Total</b>	<b>1,019</b>	<b>831</b>	<b>81.6%</b>	<b>792</b>	<b>95.3%</b>	<b>4</b>	<b>0.5%</b>	<b>35</b>	<b>4.2%</b>

\* Special Education - School-Based Self-Contained