



STATISTICAL REPORT

FAIRFAX COUNTY PUBLIC SCHOOLS  FAIRFAX, VIRGINIA

REPORT OF STUDENT RETENTIONS 2005-06

Purpose

The data in this report were collected as part of the 2005-06 Annual School Report which is required by the Virginia Department of Education. This report on student retentions provides information to support the management of Fairfax County Public Schools.

<u>Contents</u>	<u>Page</u>
Introduction	2
Summary	3
Five-Year History of County Retention Rates	4
Five-Year History of Retention Rates by Level	5
County Retention Rates by Level	6
 <i>List of Tables</i>	
Table I: Student Retentions by Grade and Level	7
Table II: Student Retentions by School and Grade - Elementary	8
Table III: Student Retentions by School and Grade - Middle	12
Table IV: Student Retentions by School and Grade - High	13
Table V: Retained Students Who Attended 2006 Summer School	14
Table VI: Conditionally Promoted Students Who Attended 2006 Summer School	15

Date of Publication

April 2007

INTRODUCTION

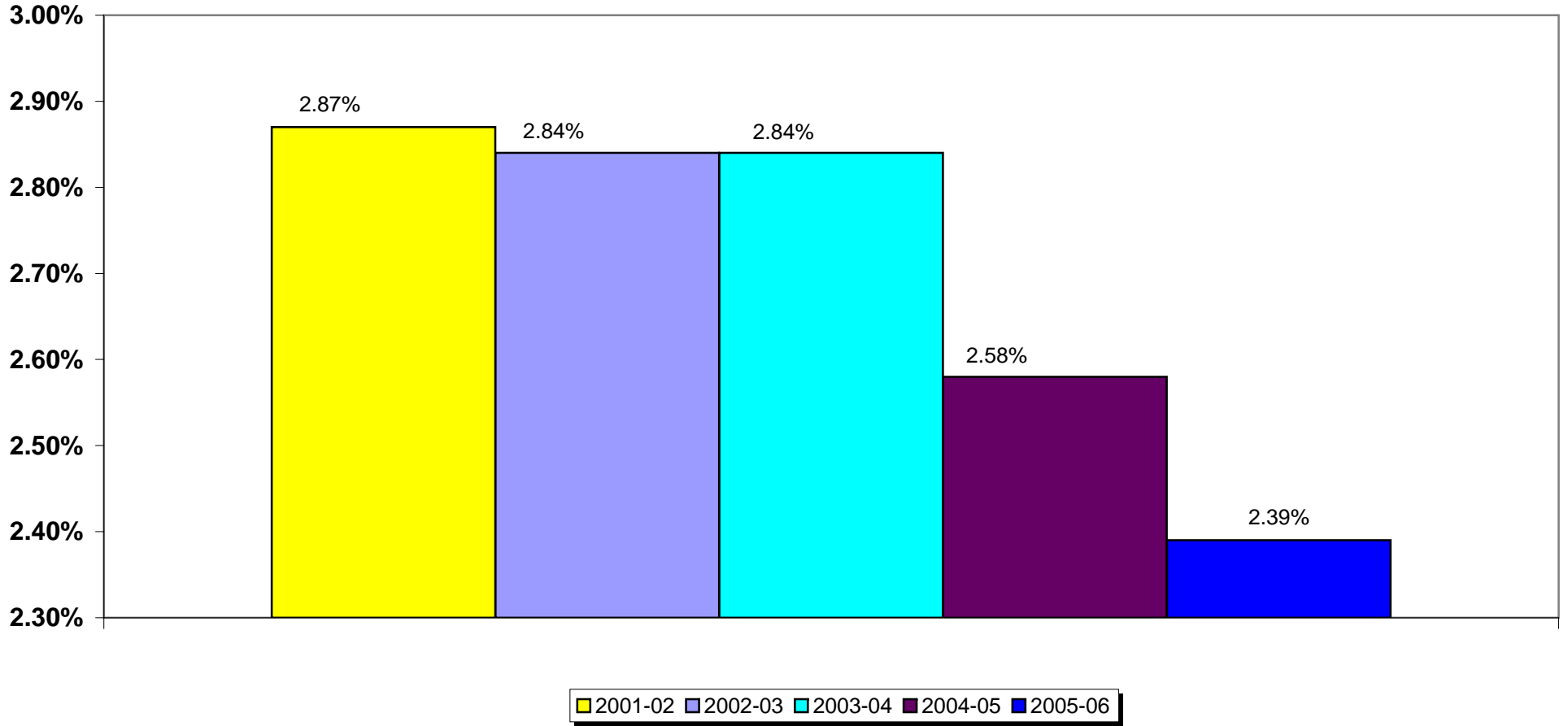
This is a report of retentions for the 2005-06 school year excluding special education centers, Instructional Services alternative centers, Student Services alternative centers, Family and Early Childhood Education (FECEP), preschool, and postgraduate students.

Inquiries regarding this report should be directed to Information Technology at 703-329-7727.

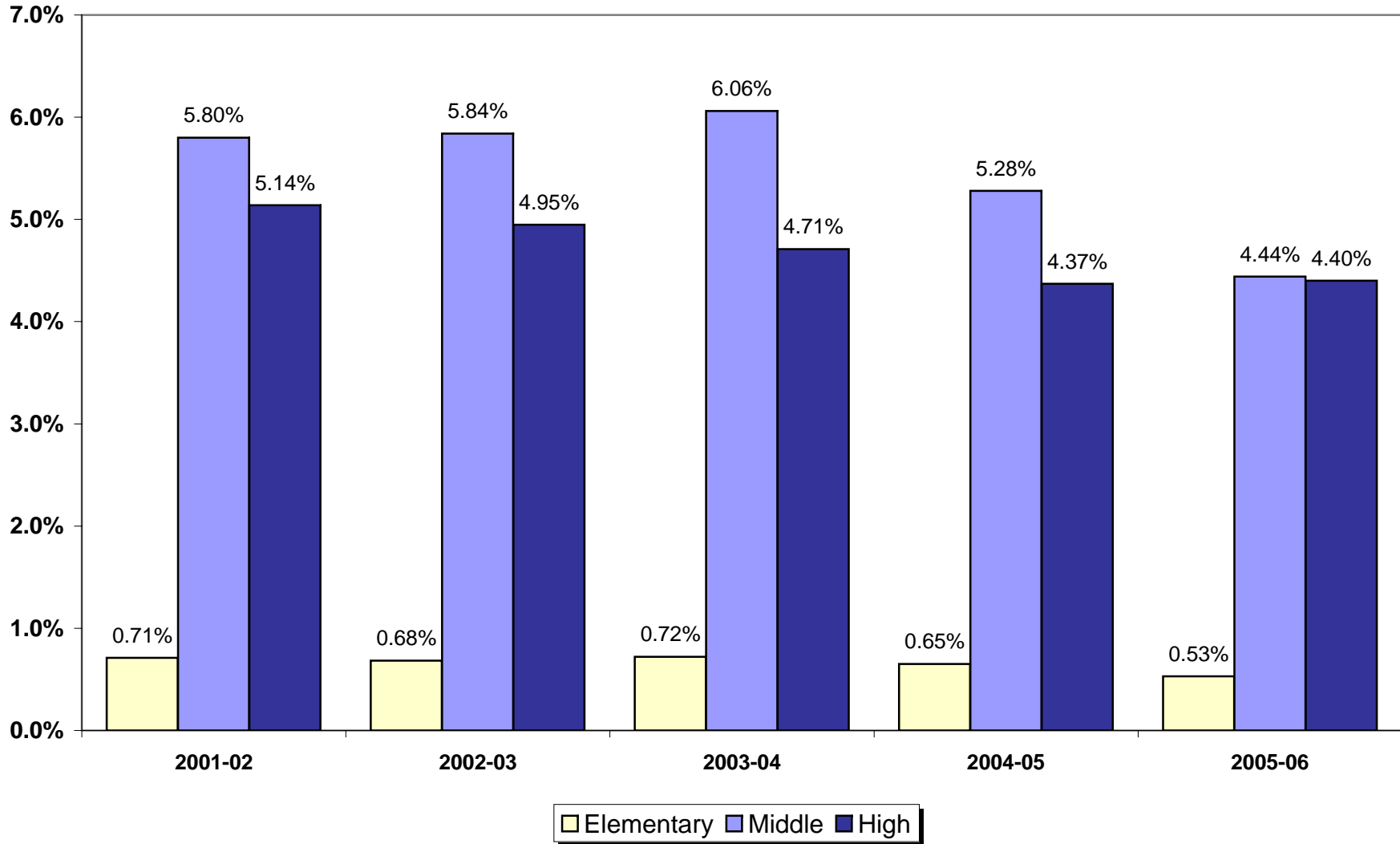
SUMMARY

- Retentions for the 2005-06 school year were 2.39 percent of the student end-of-year membership. The 2005-06 retention rate is a decrease of .48 percentage points over the past five years. See page 4.
- At the elementary level, K-6, the county retention rates ranged from 0.04 percent in sixth grade to 1.41 percent in kindergarten. See Table I, page 7.
- At the middle school level, 6-8, county retention rate, by grade level, was 3.09 percent for sixth grade, 4.56 percent for seventh grade, and 4.79 percent for eighth grade. See Table I, page 7.
- At the high school level, 9-12, county retention rates ranged from 2.33 percent for tenth grade to 5.64 percent for eleventh grade. See Table I, page 7.
- The median retention rate for elementary schools was 0.49 percent. Retentions rates among elementary schools ranged from 0.00 percent to 2.49 percent. See Table II, pages 8-11.
- The median retention rate for middle schools was 3.86 percent. Retention rates among middle schools ranged from 0.27 percent to 21.26 percent. See Table III, page 12.
- The median retention rate for high schools was 3.41 percent. Retention rates among high schools ranged from 0.86 percent to 14.42 percent. See Table IV, page 13.
- The percentage of 2005-06 retained students who attended summer school was 52.4. Of these students, 61.2 percent were promoted the following year or graduated from summer school. See Table V, page 14.
- There were 1,153 students conditionally promoted in grades 6-8 as part of the Student Accountability Plan. Of these students, 84.5% attended FCPS summer school. Of those who attended summer school, 93.8% were promoted in 2005-2006. See Table VI, page 15.

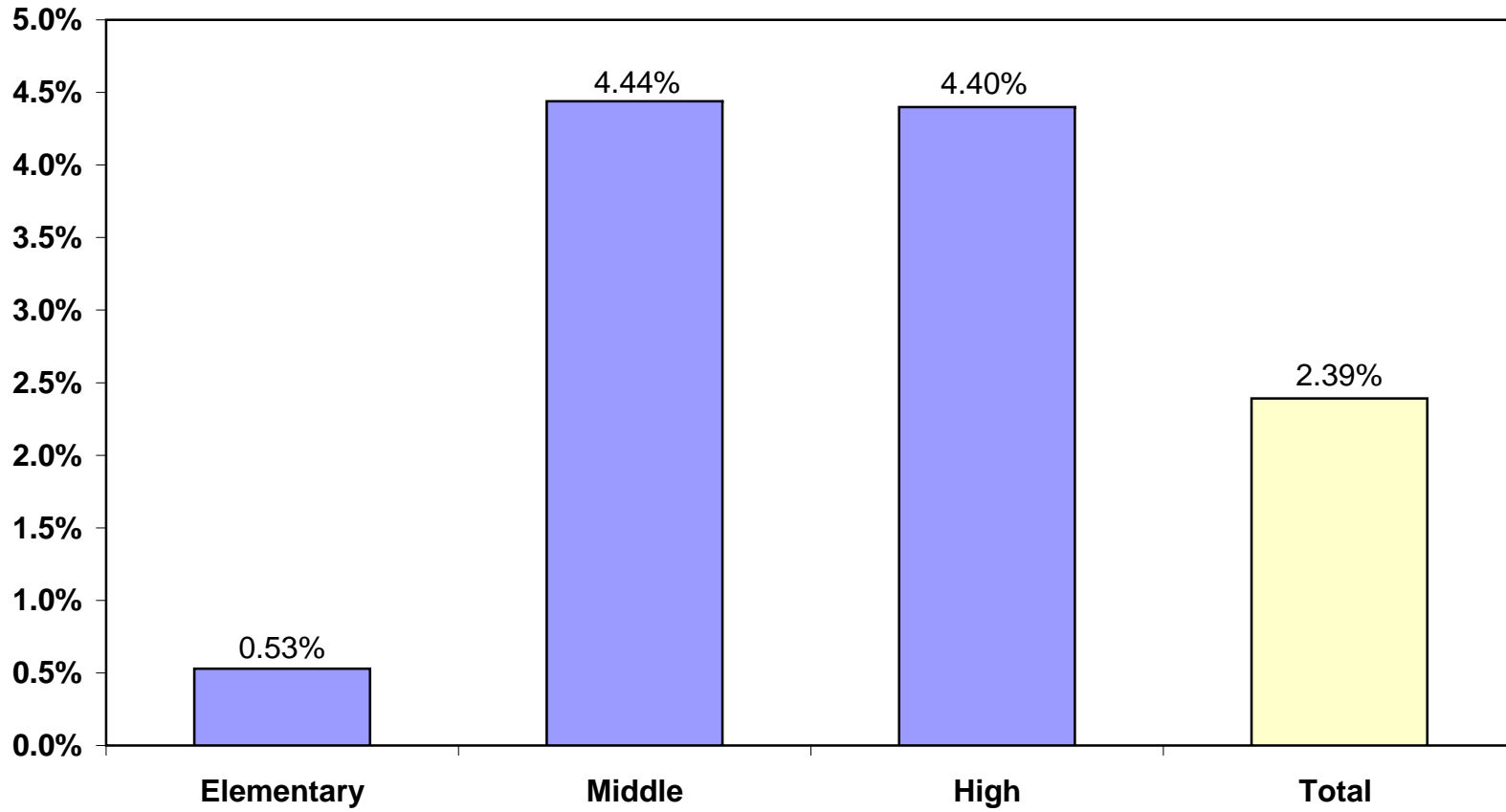
Five-Year History of County Retention Rates



Five-Year History of Retention Rates by Level



County Retention Rates by Level



**TABLE I
STUDENT RETENTIONS BY GRADE AND LEVEL**

	K		1		2		3		4		5		6		SE*		GT**		Total	
	<i>No.</i>		<i>No.</i>		<i>No.</i>		<i>No.</i>		<i>No.</i>		<i>No.</i>		<i>No.</i>		<i>No.</i>		<i>No.</i>		<i>No.</i>	
Elementary	151	1.41%	114	1.00%	48	0.43%	22	0.22%	15	0.15%	14	0.14%	4	0.04%	68	1.53%	0	0	436	0.53%

	6		7		8		SE*		GT**		Total	
	<i>No.</i>		<i>No.</i>		<i>No.</i>		<i>No.</i>		<i>No.</i>		<i>No.</i>	
Middle	25	3.09%	459	4.56%	493	4.79%	156	6.49%	8	0.38%	1141	4.44%

Note: 6th grade students at three middle schools: Glasgow, Holmes, and Poe

	7***		8***		9		10		11		12		SE*		Total	
	<i>No.</i>		<i>No.</i>		<i>No.</i>		<i>No.</i>		<i>No.</i>		<i>No.</i>		<i>No.</i>		<i>No.</i>	
High	0	0.00%	1	1.85%	524	4.31%	270	2.33%	662	5.64%	487	4.63%	257	6.64%	2201	4.40%

* *Special Education - School-Based Self-Contained*

** *Gifted/Talented - Center-Based*

*** *7th and 8th Graders at the Alternative Centers*

TABLE II
STUDENT RETENTIONS BY SCHOOL AND GRADE
ELEMENTARY SCHOOLS

	K		1		2		3		4		5		6		SE		GTC		Total	
	No.		No.		No.		No.		No.		No.		No.		No.		No.		No.	
Dranesville	0	0.00%	0	0.00%	0	0.00%	0	0.00%	0	0.00%	0	0.00%	0	0.00%	1	3.45%	0	0.00%	1	0.14%
Fairfax Villa	2	4.88%	0	0.00%	0	0.00%	0	0.00%	0	0.00%	0	0.00%	0	0.00%	2	3.51%	0	0.00%	4	1.04%
Fairhill	1	1.45%	0	0.00%	0	0.00%	0	0.00%	0	0.00%	0	0.00%	0	0.00%	1	2.70%	0	0.00%	2	0.40%
Fairview	0	0.00%	1	1.37%	0	0.00%	0	0.00%	0	0.00%	0	0.00%	0	0.00%	0	0.00%	0	0.00%	1	0.17%
Flint Hill	2	2.35%	1	1.11%	0	0.00%	0	0.00%	0	0.00%	0	0.00%	0	0.00%	1	1.79%	0	0.00%	4	0.57%
Floris	1	1.09%	2	1.68%	1	0.76%	0	0.00%	0	0.00%	0	0.00%	0	0.00%	2	4.35%	0	0.00%	6	0.74%
Forest Edge	1	1.16%	1	1.16%	0	0.00%	3	5.56%	0	0.00%	0	0.00%	0	0.00%	3	16.67%	0	0.00%	8	1.10%
Forestdale	0	0.00%	1	2.00%	0	0.00%	0	0.00%	0	0.00%	0	0.00%	0	0.00%	1	5.88%	0	0.00%	2	0.49%
Forestville	3	3.49%	0	0.00%	0	0.00%	0	0.00%	0	0.00%	0	0.00%	0	0.00%	0	0.00%	0	0.00%	3	0.39%
Fort Belvoir	3	1.46%	2	1.10%	4	2.50%	0	0.00%	0	0.00%	0	0.00%	0	0.00%	0	0.00%	0	0.00%	9	0.75%
Fort Hunt	2	3.85%	2	1.94%	2	2.17%	0	0.00%	2	2.13%	0	0.00%	0	0.00%	0	0.00%	0	0.00%	8	1.42%
Fox Mill	1	1.30%	1	0.75%	0	0.00%	0	0.00%	0	0.00%	0	0.00%	0	0.00%	1	2.94%	0	0.00%	3	0.41%
Franconia	0	0.00%	0	0.00%	1	1.37%	0	0.00%	0	0.00%	1	2.08%	0	0.00%	1	5.26%	0	0.00%	3	0.63%
Freedom Hill	0	0.00%	0	0.00%	0	0.00%	0	0.00%	0	0.00%	0	0.00%	0	0.00%	2	5.13%	0	0.00%	2	0.45%
Garfield	2	4.44%	0	0.00%	0	0.00%	0	0.00%	0	0.00%	0	0.00%	0	0.00%	1	3.33%	0	0.00%	3	0.91%
Glen Forest	2	1.50%	0	0.00%	0	0.00%	0	0.00%	0	0.00%	0	0.00%	0	0.00%	0	0.00%	0	0.00%	2	0.29%
Graham Road	0	0.00%	0	0.00%	0	0.00%	0	0.00%	0	0.00%	0	0.00%	0	0.00%	0	0.00%	0	0.00%	0	0.00%
Great Falls	1	1.72%	0	0.00%	0	0.00%	0	0.00%	0	0.00%	0	0.00%	0	0.00%	0	0.00%	0	0.00%	1	0.17%
Greenbriar East	1	0.91%	0	0.00%	0	0.00%	0	0.00%	1	0.98%	0	0.00%	1	0.97%	0	0.00%	0	0.00%	3	0.38%
Greenbriar West	1	1.27%	1	1.22%	0	0.00%	1	1.64%	0	0.00%	0	0.00%	0	0.00%	0	0.00%	0	0.00%	3	0.40%
Groveton	0	0.00%	0	0.00%	0	0.00%	0	0.00%	0	0.00%	0	0.00%	0	0.00%	1	5.56%	0	0.00%	1	0.20%
Gunston	2	2.47%	3	3.90%	1	1.22%	1	1.28%	0	0.00%	0	0.00%	0	0.00%	0	0.00%	0	0.00%	7	1.21%
Halley	4	6.78%	1	1.30%	2	2.44%	0	0.00%	0	0.00%	0	0.00%	0	0.00%	1	3.70%	0	0.00%	8	1.48%
Haycock	0	0.00%	1	1.45%	0	0.00%	0	0.00%	0	0.00%	0	0.00%	0	0.00%	2	11.11%	0	0.00%	3	0.45%
Hayfield	0	0.00%	0	0.00%	0	0.00%	0	0.00%	0	0.00%	0	0.00%	0	0.00%	0	0.00%	0	0.00%	0	0.00%
Herndon	3	3.13%	0	0.00%	0	0.00%	0	0.00%	0	0.00%	1	1.10%	0	0.00%	0	0.00%	0	0.00%	4	0.57%
Hollin Meadows	1	1.23%	0	0.00%	0	0.00%	0	0.00%	0	0.00%	0	0.00%	0	0.00%	0	0.00%	0	0.00%	1	0.18%
Hunt Valley	2	2.63%	1	1.39%	0	0.00%	0	0.00%	0	0.00%	0	0.00%	0	0.00%	0	0.00%	0	0.00%	3	0.49%
Hunters Woods	1	1.37%	0	0.00%	1	1.20%	0	0.00%	0	0.00%	0	0.00%	0	0.00%	4	8.89%	0	0.00%	6	0.62%
Hutchison	0	0.00%	2	2.70%	0	0.00%	1	1.47%	0	0.00%	0	0.00%	0	0.00%	0	0.00%	0	0.00%	3	0.55%
Hybla Valley	2	1.90%	4	3.70%	2	1.92%	0	0.00%	0	0.00%	1	1.39%	0	0.00%	0	0.00%	0	0.00%	9	1.35%
Island Creek	0	0.00%	0	0.00%	0	0.00%	0	0.00%	0	0.00%	0	0.00%	0	0.00%	0	0.00%	0	0.00%	0	0.00%
Keene Mill	0	0.00%	0	0.00%	1	1.96%	0	0.00%	1	2.08%	0	0.00%	0	0.00%	1	3.45%	0	0.00%	3	0.55%
Kent Gardens	0	0.00%	2	1.32%	0	0.00%	1	0.74%	0	0.00%	0	0.00%	0	0.00%	0	0.00%	0	0.00%	3	0.32%
Kings Glen	0	0.00%	0	0.00%	0	0.00%	0	0.00%	0	0.00%	0	0.00%	0	0.00%	0	0.00%	0	0.00%	0	0.00%
Kings Park	1	0.67%	2	1.18%	0	0.00%	0	0.00%	0	0.00%	0	0.00%	0	0.00%	1	5.56%	0	0.00%	4	0.62%

**TABLE II
STUDENT RETENTIONS BY SCHOOL AND GRADE
ELEMENTARY SCHOOLS**

	K		1		2		3		4		5		6		SE		GTC		Total	
	No.		No.		No.		No.		No.		No.		No.		No.		No.		No.	
Silverbrook	0	0.00%	0	0.00%	0	0.00%	0	0.00%	0	0.00%	0	0.00%	0	0.00%	1	2.38%	0	0.00%	1	0.09%
Sleepy Hollow	0	0.00%	1	1.43%	0	0.00%	0	0.00%	0	0.00%	0	0.00%	0	0.00%	1	2.78%	0	0.00%	2	0.57%
Spring Hill	0	0.00%	2	1.57%	0	0.00%	1	1.03%	2	1.67%	0	0.00%	0	0.00%	1	6.25%	0	0.00%	6	0.72%
Springfield Estates	2	3.45%	1	1.59%	1	1.61%	0	0.00%	0	0.00%	0	0.00%	0	0.00%	0	0.00%	0	0.00%	4	0.68%
Stenwood	1	1.79%	2	3.17%	0	0.00%	0	0.00%	0	0.00%	0	0.00%	0	0.00%	0	0.00%	0	0.00%	3	0.74%
Stratford Landing	0	0.00%	1	1.41%	0	0.00%	0	0.00%	0	0.00%	0	0.00%	0	0.00%	0	0.00%	0	0.00%	1	0.15%
Sunrise Valley	0	0.00%	0	0.00%	0	0.00%	0	0.00%	0	0.00%	0	0.00%	0	0.00%	1	4.55%	0	0.00%	1	0.20%
Terra-Centre	2	2.60%	0	0.00%	0	0.00%	0	0.00%	0	0.00%	1	1.15%	0	0.00%	0	0.00%	0	0.00%	3	0.55%
Terraset	2	3.51%	0	0.00%	1	1.85%	0	0.00%	0	0.00%	0	0.00%	0	0.00%	0	0.00%	0	0.00%	3	0.74%
Timber Lane	1	1.30%	0	0.00%	0	0.00%	0	0.00%	0	0.00%	0	0.00%	0	0.00%	1	2.63%	0	0.00%	2	0.49%
Union Mill	3	2.97%	1	0.91%	2	1.63%	0	0.00%	0	0.00%	0	0.00%	0	0.00%	0	0.00%	0	0.00%	6	0.70%
Vienna	1	2.50%	0	0.00%	0	0.00%	0	0.00%	0	0.00%	0	0.00%	0	0.00%	2	6.06%	0	0.00%	3	0.88%
Virginia Run	2	2.67%	0	0.00%	1	0.78%	0	0.00%	0	0.00%	0	0.00%	0	0.00%	2	3.17%	0	0.00%	5	0.57%
Wakefield Forest	2	3.17%	0	0.00%	0	0.00%	1	1.52%	0	0.00%	0	0.00%	0	0.00%	0	0.00%	0	0.00%	3	0.65%
Waples Mill	0	0.00%	0	0.00%	0	0.00%	0	0.00%	0	0.00%	0	0.00%	0	0.00%	1	2.70%	0	0.00%	1	0.12%
Washington Mill	0	0.00%	4	5.33%	1	1.41%	0	0.00%	0	0.00%	0	0.00%	0	0.00%	1	2.56%	0	0.00%	6	1.17%
Waynewood	0	0.00%	1	1.03%	0	0.00%	0	0.00%	0	0.00%	0	0.00%	0	0.00%	0	0.00%	0	0.00%	1	0.16%
West Springfield	2	3.33%	0	0.00%	1	1.59%	2	3.13%	0	0.00%	0	0.00%	0	0.00%	0	0.00%	0	0.00%	5	1.20%
Westbriar	0	0.00%	0	0.00%	0	0.00%	0	0.00%	0	0.00%	0	0.00%	0	0.00%	0	0.00%	0	0.00%	0	0.00%
Westgate	0	0.00%	0	0.00%	0	0.00%	0	0.00%	0	0.00%	0	0.00%	0	0.00%	0	0.00%	0	0.00%	0	0.00%
Westlawn	2	2.00%	3	3.57%	0	0.00%	0	0.00%	0	0.00%	0	0.00%	0	0.00%	2	3.13%	0	0.00%	7	1.23%
Weyanoke	2	2.11%	0	0.00%	0	0.00%	0	0.00%	0	0.00%	0	0.00%	0	0.00%	1	5.88%	0	0.00%	3	0.64%
White Oaks	1	1.67%	0	0.00%	0	0.00%	0	0.00%	0	0.00%	0	0.00%	0	0.00%	0	0.00%	0	0.00%	1	0.13%
Willow Springs	2	2.70%	0	0.00%	0	0.00%	0	0.00%	0	0.00%	0	0.00%	0	0.00%	2	5.00%	0	0.00%	4	0.54%
Wolftrap	0	0.00%	1	1.00%	0	0.00%	0	0.00%	0	0.00%	0	0.00%	0	0.00%	1	4.55%	0	0.00%	2	0.34%
Woodburn	2	3.51%	0	0.00%	0	0.00%	0	0.00%	0	0.00%	0	0.00%	0	0.00%	0	0.00%	0	0.00%	2	0.51%
Woodlawn	2	2.90%	0	0.00%	0	0.00%	0	0.00%	0	0.00%	0	0.00%	0	0.00%	0	0.00%	0	0.00%	2	0.44%
Woodley Hills	4	4.71%	2	2.50%	0	0.00%	0	0.00%	1	1.79%	0	0.00%	0	0.00%	0	0.00%	0	0.00%	7	1.33%
Total	151	1.41%	114	1.00%	48	0.43%	22	0.22%	15	0.15%	14	0.14%	4	0.04%	68	1.53%	0	0.00%	436	0.53%

**TABLE III
STUDENT RETENTIONS BY SCHOOL AND GRADE
MIDDLE SCHOOLS**

School Name	6		7		8		SE		GTC		Total	
	No.		No.		No.		No.		No.		No.	
ALC at Burke	0	0.00%	6	42.86%	3	23.08%	0	0.00%	0	0.00%	9	33.33%
Carson	0	0.00%	6	1.80%	8	2.15%	2	1.83%	0	0.00%	16	1.49%
Cooper	0	0.00%	3	0.67%	8	1.75%	2	3.39%	0	0.00%	13	1.34%
Franklin	0	0.00%	4	0.97%	5	0.98%	1	1.02%	0	0.00%	10	0.98%
Frost	0	0.00%	7	2.01%	6	1.49%	3	2.97%	0	0.00%	16	1.44%
Glasgow	9	3.15%	26	9.19%	23	8.16%	6	7.32%	1	0.87%	65	6.20%
Hayfield	0	0.00%	15	4.13%	20	6.27%	5	7.94%	0	0.00%	40	5.37%
Herndon	0	0.00%	41	8.86%	28	6.07%	19	11.88%	0	0.00%	88	8.12%
Holmes	1	0.45%	6	2.82%	20	9.22%	7	7.07%	0	0.00%	34	4.52%
Hughes	0	0.00%	21	6.44%	8	2.90%	4	3.92%	0	0.00%	33	3.86%
Irving	0	0.00%	0	0.21%	0	0.00%	2	2.35%	0	0.00%	2	0.41%
Jackson	0	0.00%	42	10.80%	45	11.19%	21	17.80%	0	0.00%	108	21.26%
Key	0	0.00%	46	12.17%	15	4.62%	11	9.57%	0	0.00%	72	8.80%
Kilmer	0	0.00%	8	2.94%	15	5.14%	5	8.47%	4	1.12%	32	3.27%
Lake Braddock	0	0.00%	35	6.97%	42	9.13%	2	2.60%	2	1.12%	81	10.70%
Lanier	0	0.00%	12	3.00%	37	8.03%	4	3.48%	0	0.00%	53	5.43%
Liberty	0	0.00%	16	3.09%	22	4.30%	3	3.33%	0	0.00%	41	3.66%
Longfellow	0	0.00%	5	1.55%	10	2.90%	7	11.11%	1	0.32%	23	2.21%
Poe	15	5.00%	2	0.63%	20	5.62%	3	2.38%	0	0.00%	40	3.63%
Robinson	0	0.00%	5	0.87%	3	0.50%	0	0.00%	0	0.00%	8	0.61%
Rocky Run	0	0.00%	12	5.00%	3	1.17%	10	23.81%	0	0.00%	25	3.18%
Sandburg	0	0.00%	43	9.60%	49	11.95%	14	18.18%	0	0.00%	106	10.01%
South County	0	0.00%	30	5.95%	26	5.82%	10	12.20%	0	0.00%	66	6.39%
Stone	0	0.00%	17	4.09%	9	1.87%	3	2.97%	0	0.00%	29	2.91%
Thoreau	0	0.00%	2	0.60%	0	0.00%	0	0.00%	0	0.00%	2	0.27%
Twain	0	0.00%	17	4.99%	27	6.85%	5	6.25%	0	0.00%	49	5.20%
Whitman	0	0.00%	31	7.47%	34	8.72%	7	7.00%	0	0.00%	72	7.96%
Total	25	3.09%	459	4.56%	493	4.79%	156	6.49%	8	0.38%	1141	4.44%

**TABLE IV
STUDENT RETENTIONS BY SCHOOL AND GRADE
HIGH SCHOOLS**

School Name	7		8		9		10		11		12		SE		Total	
	No.		No.		No.		No.		No.		No.		No.		No.	
ALC at Bryant	0	0.00%	0	0.00%	0	0.00%	0	0.00%	0	0.00%	0	0.00%	0	0.00%	0	0.00%
ALC at Dunn Loring	0	0.00%	0	0.00%	0	0.00%	0	0.00%	0	0.00%	0	0.00%	0	0.00%	0	0.00%
ALC at Eleven Oaks	0	0.00%	1	5.88%	0	0.00%	0	0.00%	0	0.00%	0	0.00%	0	0.00%	1	1.52%
Annandale	0	0.00%	0	0.00%	46	7.72%	17	3.53%	90	14.80%	44	9.71%	9	5.63%	206	8.96%
Centreville	0	0.00%	0	0.00%	23	4.25%	8	1.53%	34	6.61%	19	4.13%	7	3.85%	91	4.10%
Chantilly	0	0.00%	0	0.00%	15	2.13%	7	1.10%	11	1.67%	16	2.78%	8	3.74%	57	2.04%
Edison	0	0.00%	0	0.00%	16	4.37%	22	5.29%	42	9.70%	32	8.25%	16	9.30%	128	7.21%
Fairfax	0	0.00%	0	0.00%	18	3.85%	8	1.85%	21	4.02%	13	2.91%	8	5.76%	68	3.39%
Falls Church	0	0.00%	0	0.00%	18	5.63%	10	3.79%	44	13.25%	16	6.13%	10	5.92%	98	7.28%
Hayfield	0	0.00%	0	0.00%	18	5.47%	9	2.62%	11	3.09%	37	6.42%	4	3.74%	79	4.62%
Herndon	0	0.00%	0	0.00%	0	0.00%	11	2.17%	43	8.74%	23	4.86%	12	8.11%	89	8.00%
Jefferson Sci/Tech	0	0.00%	0	0.00%	0	0.00%	0	0.00%	0	0.00%	0	0.00%	0	0.00%	0	0.00%
Lake Braddock	0	0.00%	0	0.00%	23	3.90%	11	1.75%	17	2.86%	32	5.34%	4	3.48%	87	3.44%
Langley	0	0.00%	0	0.00%	3	0.65%	3	0.62%	2	0.45%	8	1.85%	1	0.68%	17	0.86%
Lee	0	0.00%	0	0.00%	47	10.24%	19	4.24%	82	16.57%	32	7.92%	14	9.66%	194	13.00%
Madison	0	0.00%	0	0.00%	2	0.47%	10	2.14%	4	0.90%	3	0.77%	6	4.26%	25	1.34%
Marshall	0	0.00%	0	0.00%	3	0.95%	6	2.08%	23	7.47%	13	4.50%	10	7.52%	55	4.12%
McLean	0	0.00%	0	0.00%	11	2.56%	8	1.89%	4	0.98%	19	5.21%	12	9.68%	54	3.09%
Mount Vernon	0	0.00%	0	0.00%	39	9.09%	16	4.48%	22	6.75%	31	9.84%	21	9.42%	129	7.82%
Oakton	0	0.00%	0	0.00%	8	1.52%	8	1.41%	13	2.45%	10	2.01%	7	3.93%	46	2.00%
Robinson	0	0.00%	0	0.00%	7	1.16%	4	0.65%	5	0.71%	13	2.00%	5	2.36%	34	1.22%
South County	0	0.00%	0	0.00%	18	3.49%	8	1.97%	3	0.82%	0	0.00%	6	5.41%	35	2.50%
South Lakes	0	0.00%	0	0.00%	24	7.52%	8	2.66%	18	5.83%	18	6.00%	18	8.96%	86	6.01%
Stuart	0	0.00%	0	0.00%	45	11.90%	25	7.84%	93	25.14%	34	12.01%	11	11.96%	208	14.42%
West Potomac	0	0.00%	0	0.00%	54	10.59%	21	4.59%	35	8.50%	24	6.23%	32	18.71%	166	8.57%
West Springfield	0	0.00%	0	0.00%	16	2.96%	14	2.98%	22	4.25%	25	4.91%	17	9.55%	94	4.24%
Westfield	0	0.00%	0	0.00%	22	2.87%	11	1.34%	10	1.40%	13	1.99%	15	7.46%	71	2.25%
Woodson	0	0.00%	0	0.00%	10	1.96%	6	1.26%	13	2.87%	12	2.93%	4	1.90%	45	2.18%
Total	0	0.00%	1	1.85%	524	4.31%	270	2.33%	662	5.64%	487	4.63%	257	6.64%	2201	4.40%

TABLE V
RETAINED STUDENTS WHO ATTENDED 2006 SUMMER SCHOOL
AN ANALYSIS OF THEIR 2006-2007 SCHOOL YEAR STATUS

2005-06				2006-2007 Status							
Grade Level	Retained Students	Retained Students Who Attended FCPS Summer School		Promoted		In Same Grade Level		Demoted or Changed Programs		Did Not Return to FCPS	
	No.	No.	%	No.	%	No.	%	No.	%	No.	%
K	151	78	51.7%	9	11.5%	58	74.4%	5	6.4%	6	7.7%
1	114	66	57.9%	7	10.6%	51	77.3%	2	3.0%	6	9.1%
2	48	24	50.0%	0	0.0%	22	91.7%	1	4.2%	1	4.2%
3	22	11	0.0%	2	0.0%	7	0.0%	0	0.0%	2	18.2%
4	15	5	33.3%	1	20.0%	4	80.0%	0	0.0%	0	0.0%
5	14	10	71.4%	3	30.0%	7	70.0%	0	0.0%	0	0.0%
6	29	22	75.9%	21	95.5%	0	0.0%	0	0.0%	1	4.5%
7	459	339	73.9%	300	88.5%	20	5.9%	1	0.3%	18	5.3%
8	494	375	75.9%	330	88.0%	9	2.4%	0	0.0%	36	9.6%
9	524	170	32.4%	63	37.1%	96	56.5%	2	1.2%	9	5.3%
10	270	79	29.3%	24	30.4%	49	62.0%	1	1.3%	5	6.3%
11	662	290	43.8%	73	25.2%	196	67.6%	3	1.0%	18	6.2%
12	487	258	53.0%	219 **	84.9%	20	7.8%	0	0.0%	31	12.0%
GT	8	7	87.5%	7	100.0%	0	0.0%	0	0.0%	0	0.0%
Special Ed *	481	244	50.7%	152	62.3%	57	23.4%	7	2.9%	16	6.6%
	3778	1978	52.4%	1211	61.2%	596	30.1%	22	1.1%	149	7.5%

* Special Education - School-Based Self-Contained

** 2006 Summer School Graduates (12 are Special Ed)

TABLE VI
CONDITIONALLY PROMOTED STUDENTS WHO ATTENDED 2006 SUMMER SCHOOL
AN ANALYSIS OF THEIR 2006-2007 SCHOOL YEAR STATUS

2005-06			2006-2007 Status						
Grade Level	Conditionally Promoted Students	Conditionally Promoted Students Who Attended FCPS Summer School		Promoted After Summer School		Retained after Summer School		Did Not Return to FCPS	
	No.	No.		No.		No.		No.	
6	207	180	87.0%	169	93.9%	0	0.0%	11	6.1%
7	376	331	88.0%	312	94.3%	0	0.0%	19	5.7%
8	282	233	82.6%	222	95.3%	0	0.0%	11	4.7%
GT	0	0	0.0%	0	0.0%	0	0.0%	0	0.0%
Special Ed *	288	230	79.9%	211	91.7%	1	0.4%	18	7.8%
Total	1,153	974	84.5%	914	93.8%	1	0.1%	59	6.1%

* Special Education - School-Based Self-Contained