



STATISTICAL REPORT

FAIRFAX COUNTY PUBLIC SCHOOLS  FAIRFAX, VIRGINIA

REPORT OF STUDENT RETENTIONS 2004-05

Purpose

The data in this report were collected as part of the 2004-05 Annual School Report which is required by the Virginia Department of Education. This report on student retentions provides information to support the management of Fairfax County Public Schools.

<u>Contents</u>	<u>Page</u>
Introduction	2
Summary	3
Five-Year History of County Retention Rates	4
Five-Year History of Retention Rates by Level	5
County Retention Rates by Level	6
 <i>List of Tables</i>	
Table I: Student Retentions by Grade and Level	7
Table II: Student Retentions by School and Grade - Elementary	8
Table III: Student Retentions by School and Grade - Middle	12
Table IV: Student Retentions by School and Grade - High	13
Table V: Retained Students Who Attended 2005 Summer School	14
Table VI: Conditionally Promoted Students Who Attended 2005 Summer School	15

Date of Publication
December 2005

INTRODUCTION

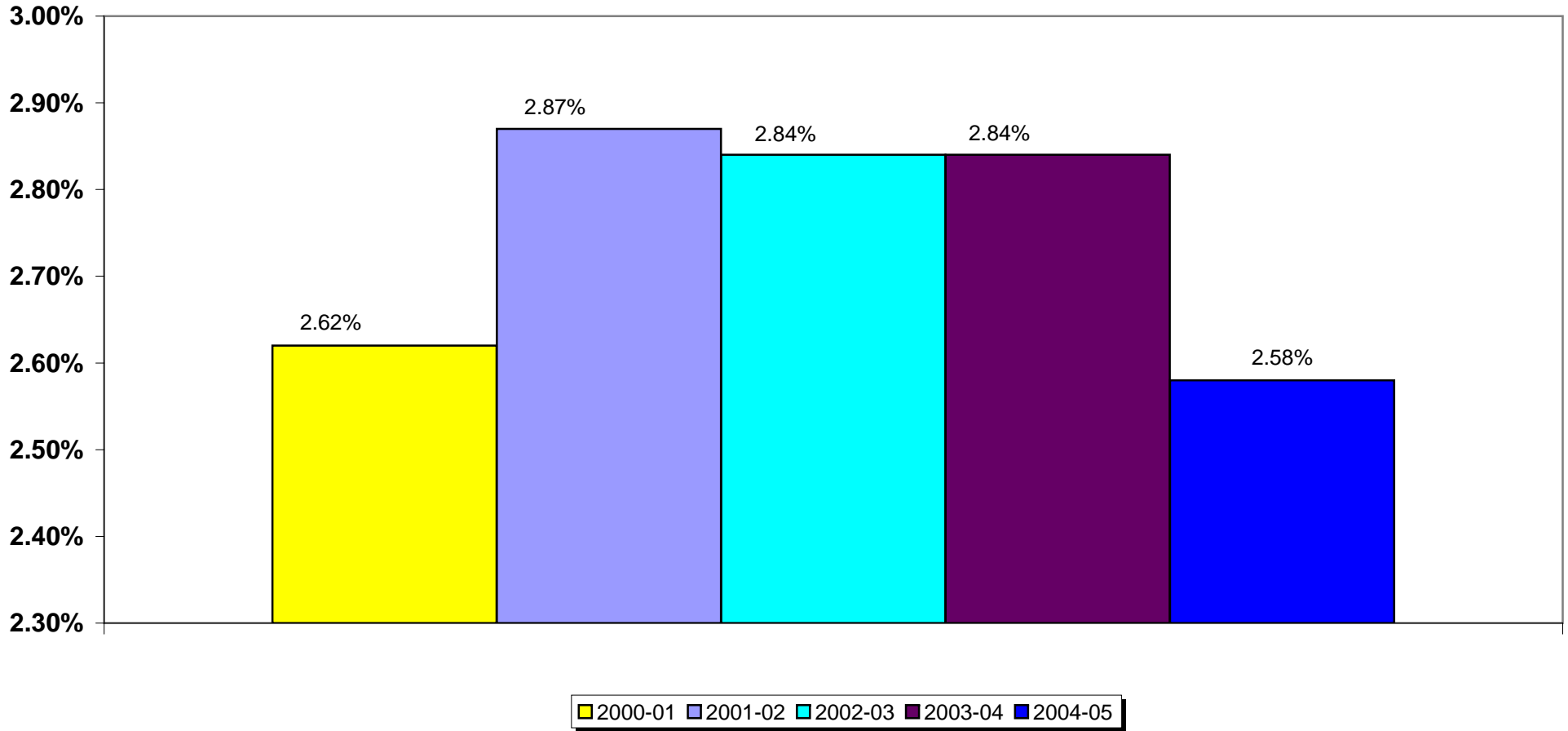
This is a report of retentions for the 2004-05 school year excluding special education centers, Instructional Services alternative centers, Student Services alternative centers, Family and Early Childhood Education (FECEP), preschool, Literacy Program (LP) and postgraduate students.

Inquiries regarding this report should be directed to Information Technology, Decision Support Solutions Team, at 703-329-7727.

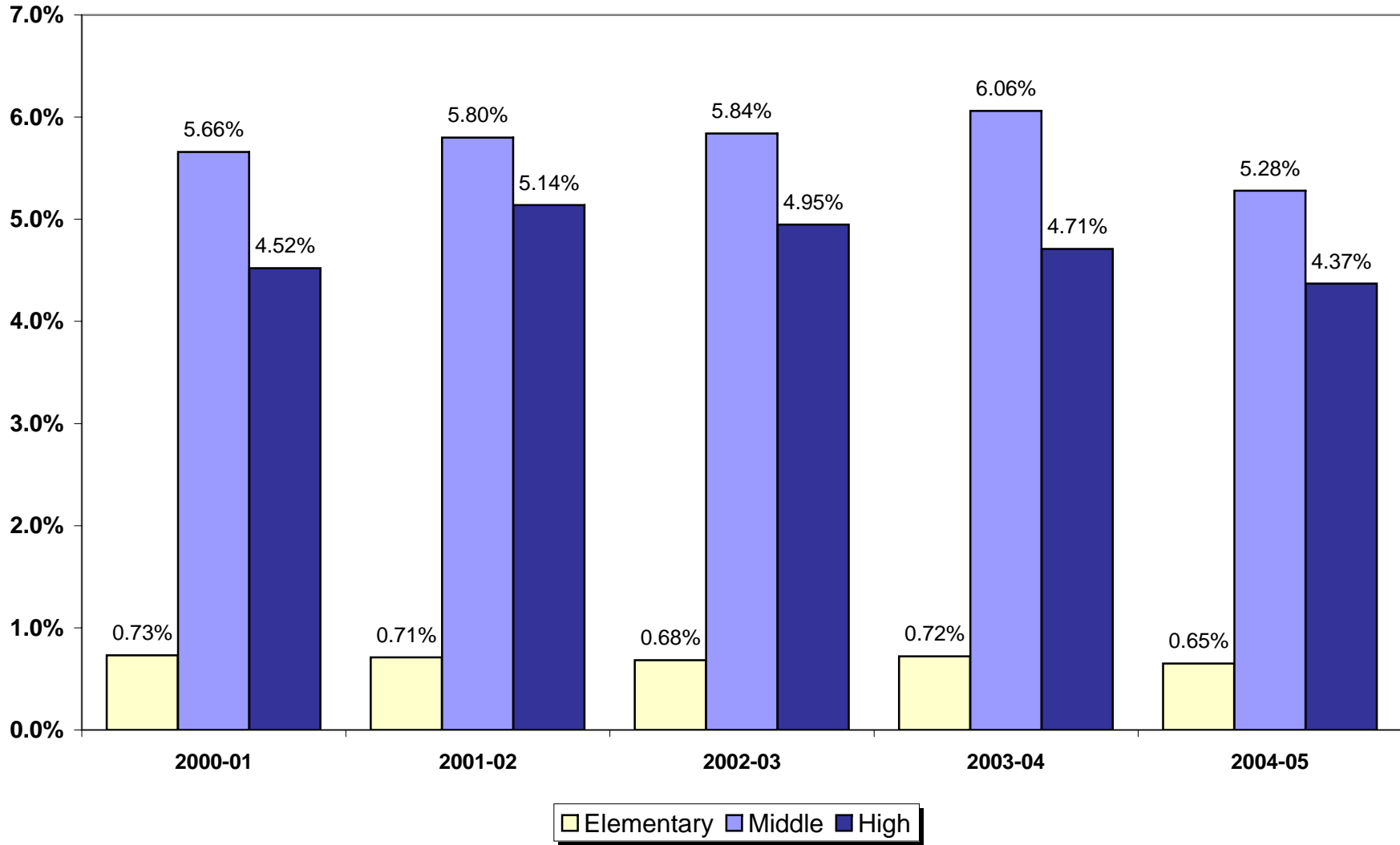
SUMMARY

- Retentions for the 2004-05 school year were 2.58 percent of the student end-of-year membership. The 2004-05 retention rate is a decrease of .04 percentage points over the past five years. See page 4.
- At the elementary level, K-6, the county retention rates ranged from 0.05 percent in sixth grade to 1.67 percent in kindergarten. See Table I, page 7.
- At the middle school level, 6-8, county retention rate, by grade level, was 3.28 percent for sixth grade, 5.62 percent for seventh grade, and 5.31 percent for eighth grade. See Table I, page 7.
- At the high school level, 9-12, county retention rates ranged from 2.34 percent for tenth grade to 5.69 percent for eleventh grade. See Table I, page 7.
- The median retention rate for elementary schools was 0.49 percent. Retentions rates among elementary schools ranged from 0.00 percent to 4.25 percent. See Table II, pages 8-11.
- The median retention rate for middle schools was 2.93 percent. Retention rates among middle schools ranged from 0.14 percent to 16.31 percent. See Table III, page 12.
- The median retention rate for high schools was 3.85 percent. Retention rates among high schools ranged from 0.18 percent to 10.94 percent. See Table IV, page 13.
- The percentage of 2004-05 retained students who attended summer school was 53.1. Of these students, 63.9 percent were promoted the following year or graduated from summer school. See Table V, page 14.
- There were 1,093 students conditionally promoted in grades 6-8 as part of the Student Accountability Plan. Of these students, 83.1% attended FCPS summer school. Of those who attended summer school, 94.8% were promoted in 2004-2005. See Table VI, page 15.

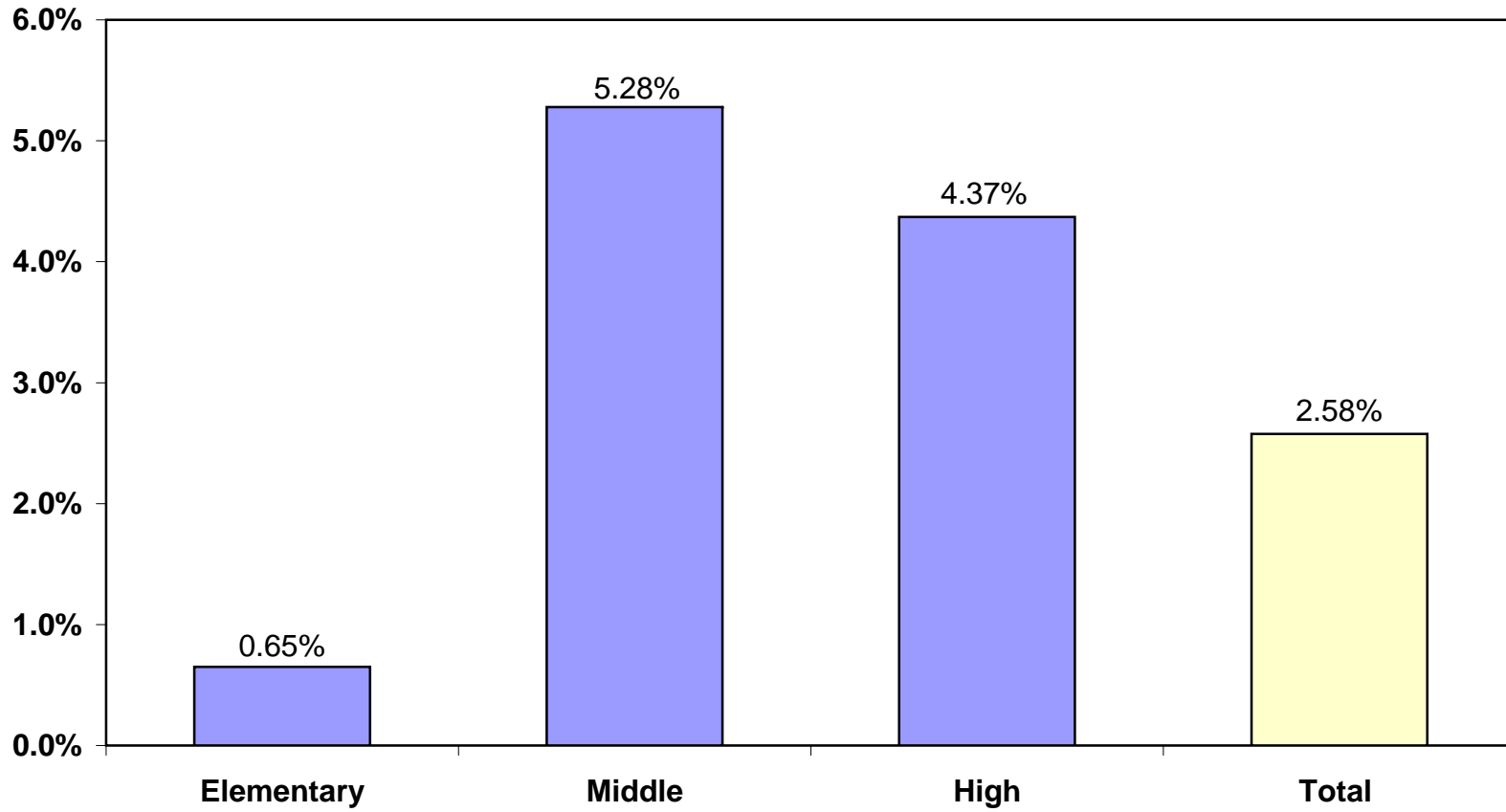
Five-Year History of County Retention Rates



Five-Year History of Retention Rates by Level



County Retention Rates by Level



**TABLE I
STUDENT RETENTIONS BY GRADE AND LEVEL**

	K		1		2		3		4		5		6		SE*		GT**		Total	
	<i>No.</i>		<i>No.</i>		<i>No.</i>		<i>No.</i>		<i>No.</i>		<i>No.</i>		<i>No.</i>		<i>No.</i>		<i>No.</i>		<i>No.</i>	
Elementary	177	1.67%	165	1.44%	59	0.52%	31	0.30%	15	0.15%	8	0.08%	5	0.05%	72	1.66%	1	0.02%	533	0.65%

	6		7		8		SE*		GT**		Total	
	<i>No.</i>		<i>No.</i>		<i>No.</i>		<i>No.</i>		<i>No.</i>		<i>No.</i>	
Middle	27	3.28%	584	5.62%	558	5.31%	208	8.26%	11	0.54%	1388	5.28%

Note: 6th grade students at three middle schools: Glasgow, Holmes, and Poe

	7***		8***		9		10		11		12		SE*		Total	
	<i>No.</i>		<i>No.</i>		<i>No.</i>		<i>No.</i>		<i>No.</i>		<i>No.</i>		<i>No.</i>		<i>No.</i>	
High	1	4.35%	0	0.00%	516	4.30%	276	2.34%	650	5.69%	455	4.34%	263	7.11%	2161	4.37%

* *Special Education - School-Based Self-Contained*

** *Gifted/Talented - Center-Based*

*** *7th and 8th Graders at the Alternative Centers*

**TABLE II
STUDENT RETENTIONS BY SCHOOL AND GRADE
ELEMENTARY SCHOOLS**

	K		1		2		3		4		5		6		SE		GTC		Total	
	No.		No.		No.		No.		No.		No.		No.		No.		No.		No.	
Silverbrook	3	2.33%	1	0.72%	0	0.00%	0	0.00%	0	0.00%	0	0.00%	0	0.00%	0	0.00%	0	0.00%	4	0.39%
Sleepy Hollow	3	3.90%	0	0.00%	1	1.64%	0	0.00%	0	0.00%	0	0.00%	0	0.00%	0	0.00%	0	0.00%	4	1.04%
Spring Hill	2	2.00%	2	1.71%	0	0.00%	1	0.85%	0	0.00%	0	0.00%	0	0.00%	1	10.00%	0	0.00%	6	0.74%
Springfield Estates	1	1.75%	4	5.63%	2	3.70%	0	0.00%	1	1.69%	0	0.00%	0	0.00%	0	0.00%	0	0.00%	8	1.30%
Stenwood	0	0.00%	0	0.00%	0	0.00%	0	0.00%	0	0.00%	0	0.00%	0	0.00%	0	0.00%	0	0.00%	0	0.00%
Stratford Landing	2	2.99%	3	4.41%	0	0.00%	0	0.00%	0	0.00%	0	0.00%	0	0.00%	0	0.00%	0	0.00%	5	0.80%
Sunrise Valley	0	0.00%	0	0.00%	0	0.00%	0	0.00%	0	0.00%	0	0.00%	0	0.00%	0	0.00%	0	0.00%	0	0.00%
Terra-Centre	0	0.00%	0	0.00%	0	0.00%	0	0.00%	0	0.00%	0	0.00%	0	0.00%	1	6.67%	0	0.00%	1	0.18%
Terraset	0	0.00%	2	3.57%	0	0.00%	1	1.72%	0	0.00%	0	0.00%	0	0.00%	1	2.78%	0	0.00%	4	0.86%
Timber Lane	0	0.00%	0	0.00%	0	0.00%	0	0.00%	0	0.00%	0	0.00%	0	0.00%	3	6.67%	0	0.00%	3	0.67%
Union Mill	1	0.98%	1	0.80%	0	0.00%	0	0.00%	0	0.00%	0	0.00%	0	0.00%	0	0.00%	0	0.00%	2	0.23%
Vienna	2	4.08%	0	0.00%	0	0.00%	0	0.00%	0	0.00%	0	0.00%	0	0.00%	0	0.00%	0	0.00%	2	0.61%
Virginia Run	0	0.00%	0	0.00%	1	0.75%	1	0.96%	0	0.00%	0	0.00%	0	0.00%	1	1.20%	0	0.00%	3	0.32%
Wakefield Forest	6	10.53%	0	0.00%	0	0.00%	0	0.00%	0	0.00%	0	0.00%	0	0.00%	2	9.52%	0	0.00%	8	1.79%
Waples Mill	0	0.00%	1	0.83%	0	0.00%	0	0.00%	0	0.00%	0	0.00%	0	0.00%	0	0.00%	0	0.00%	1	0.12%
Washington Mill	2	2.44%	4	6.06%	2	3.39%	3	4.84%	1	1.69%	0	0.00%	0	0.00%	1	2.94%	0	0.00%	13	2.65%
Waynewood	0	0.00%	2	2.04%	2	1.90%	0	0.00%	0	0.00%	0	0.00%	0	0.00%	1	4.76%	0	0.00%	5	0.77%
West Springfield	0	0.00%	1	1.56%	1	1.67%	0	0.00%	0	0.00%	0	0.00%	0	0.00%	0	0.00%	0	0.00%	2	0.49%
Westbriar	0	0.00%	0	0.00%	0	0.00%	0	0.00%	0	0.00%	0	0.00%	0	0.00%	0	0.00%	0	0.00%	0	0.00%
Westgate	0	0.00%	0	0.00%	0	0.00%	0	0.00%	0	0.00%	0	0.00%	0	0.00%	1	4.76%	0	0.00%	1	0.32%
Westlawn	5	6.02%	0	0.00%	4	4.94%	1	1.45%	0	0.00%	0	0.00%	0	0.00%	2	3.23%	0	0.00%	12	2.11%
Weyanoke	0	0.00%	3	3.80%	0	0.00%	0	0.00%	0	0.00%	0	0.00%	0	0.00%	0	0.00%	0	0.00%	3	0.63%
White Oaks	0	0.00%	1	0.98%	0	0.00%	0	0.00%	0	0.00%	0	0.00%	0	0.00%	0	0.00%	0	0.00%	1	0.13%
Willow Springs	2	3.45%	0	0.00%	0	0.00%	0	0.00%	0	0.00%	0	0.00%	0	0.00%	1	3.03%	0	0.00%	3	0.39%
Wolftrap	0	0.00%	1	1.14%	0	0.00%	0	0.00%	0	0.00%	0	0.00%	0	0.00%	0	0.00%	0	0.00%	1	0.17%
Woodburn	0	0.00%	0	0.00%	0	0.00%	0	0.00%	0	0.00%	0	0.00%	0	0.00%	0	0.00%	0	0.00%	0	0.00%
Woodlawn	0	0.00%	0	0.00%	0	0.00%	0	0.00%	0	0.00%	0	0.00%	0	0.00%	0	0.00%	0	0.00%	0	0.00%
Woodley Hills	1	1.01%	1	1.33%	2	2.67%	1	1.72%	0	0.00%	0	0.00%	0	0.00%	0	0.00%	0	0.00%	5	0.92%
Total	177	1.67%	165	1.44%	59	0.52%	31	0.30%	15	0.15%	8	0.08%	5	0.05%	72	1.66%	1	0.02%	533	0.65%

**TABLE III
STUDENT RETENTIONS BY SCHOOL AND GRADE
MIDDLE SCHOOLS**

School Name	6		7		8		SE		GTC		Total	
	No.		No.		No.		No.		No.		No.	
Carson	0	0.00%	4	1.13%	7	1.78%	1	1.10%	1	0.39%	13	1.19%
Cooper	0	0.00%	5	1.11%	5	1.16%	1	1.59%	0	0.00%	11	1.16%
Franklin	0	0.00%	1	0.20%	1	0.22%	0	0.00%	0	0.00%	2	0.19%
Frost	0	0.00%	8	1.96%	2	0.55%	1	1.12%	1	0.38%	12	1.07%
Glasgow	8	2.56%	14	4.91%	22	8.03%	16	14.55%	0	0.00%	60	5.47%
Hayfield	0	0.00%	43	6.41%	54	8.35%	13	10.92%	0	0.00%	110	7.65%
Herndon	0	0.00%	62	11.76%	39	8.39%	29	16.96%	0	0.00%	130	11.18%
Holmes	9	4.02%	4	1.92%	26	10.92%	3	2.94%	0	0.00%	42	5.44%
Hughes	0	0.00%	10	3.33%	6	2.24%	5	5.15%	0	0.00%	21	2.55%
Irving	0	0.00%	21	3.97%	10	1.76%	4	4.21%	0	0.00%	35	2.93%
Jackson	0	0.00%	80	18.31%	66	13.81%	22	19.13%	0	0.00%	168	16.31%
Key	0	0.00%	60	14.25%	29	7.11%	14	10.37%	0	0.00%	103	10.68%
Kilmer	0	0.00%	3	1.06%	11	3.81%	2	2.82%	4	1.30%	20	2.10%
Lake Braddock	0	0.00%	37	8.19%	34	6.20%	3	3.66%	1	0.78%	75	6.19%
Lanier	0	0.00%	16	3.46%	28	6.44%	3	2.86%	0	0.00%	47	4.69%
Liberty	0	0.00%	7	1.40%	17	3.23%	3	2.44%	0	0.00%	27	2.35%
Longfellow	0	0.00%	8	2.33%	17	4.46%	5	9.09%	1	0.34%	31	2.90%
Poe	10	3.50%	6	1.61%	7	1.94%	5	4.24%	0	0.00%	28	2.46%
Robinson	0	0.00%	22	3.76%	40	6.47%	11	10.19%	0	0.00%	73	5.57%
Rocky Run	0	0.00%	11	4.15%	4	1.32%	2	5.26%	1	0.44%	18	2.16%
Sandburg	0	0.00%	47	10.85%	49	10.75%	22	24.18%	0	0.00%	118	10.57%
Stone	0	0.00%	17	3.53%	7	1.43%	4	3.81%	0	0.00%	28	2.60%
Thoreau	0	0.00%	1	0.31%	0	0.00%	0	0.00%	0	0.00%	1	0.14%
Twain	0	0.00%	28	7.00%	36	10.06%	18	13.74%	2	1.20%	84	7.96%
Whitman	0	0.00%	69	17.04%	41	9.47%	21	15.11%	0	0.00%	131	13.41%
Total	27	3.28%	584	5.62%	558	5.31%	208	8.26%	11	0.54%	1388	5.28%

**TABLE IV
STUDENT RETENTIONS BY SCHOOL AND GRADE
HIGH SCHOOLS**

School Name	7		8		9		10		11		12		se		Total	
	No.		No.		No.		No.		No.		No.		No.		No.	
ALC at Bryant	0	0.00%	0	0.00%	0	0.00%	0	0.00%	0	0.00%	0	0.00%	0	0.00%	0	0.00%
ALC at Dunn Loring	1	16.67%	0	0.00%	0	0.00%	0	0.00%	0	0.00%	0	0.00%	0	0.00%	1	2.56%
ALC at Eleven Oaks	0	0.00%	0	0.00%	2	16.67%	0	0.00%	0	0.00%	0	0.00%	0	0.00%	2	3.92%
Annandale	0	0.00%	0	0.00%	47	8.92%	17	2.86%	105	17.27%	56	11.11%	7	5.22%	232	9.80%
Centreville	0	0.00%	0	0.00%	18	3.31%	13	2.51%	23	4.80%	11	2.74%	17	8.90%	82	3.85%
Chantilly	0	0.00%	0	0.00%	24	3.69%	21	3.15%	37	5.98%	18	3.16%	11	5.21%	111	4.09%
Edison	0	0.00%	0	0.00%	23	5.46%	12	2.70%	22	5.37%	25	7.44%	9	4.55%	91	5.03%
Fairfax	0	0.00%	0	0.00%	19	4.42%	8	1.65%	29	5.84%	15	3.23%	8	5.06%	79	3.89%
Falls Church	0	0.00%	0	0.00%	7	2.44%	3	0.94%	13	3.89%	22	8.09%	2	1.04%	47	3.35%
Hayfield	0	0.00%	0	0.00%	29	4.37%	12	1.82%	26	4.57%	25	4.67%	11	6.01%	103	3.94%
Herndon	0	0.00%	0	0.00%	44	7.76%	12	2.29%	61	11.36%	22	4.68%	13	11.11%	152	6.87%
Jefferson Sci/Tech	0	0.00%	0	0.00%	0	0.00%	0	0.00%	0	0.00%	3	0.73%	0	0.00%	3	0.18%
Lake Braddock	0	0.00%	0	0.00%	16	2.47%	8	1.37%	24	3.77%	20	3.33%	2	1.75%	70	2.71%
Langley	0	0.00%	0	0.00%	2	0.42%	4	0.90%	3	0.67%	9	1.96%	4	2.96%	22	1.12%
Lee	0	0.00%	0	0.00%	41	8.13%	19	3.80%	61	13.47%	26	6.36%	22	14.10%	169	8.36%
Madison	0	0.00%	0	0.00%	3	0.65%	0	0.00%	6	1.56%	3	0.79%	3	2.31%	15	0.83%
Marshall	0	0.00%	0	0.00%	3	1.04%	1	0.34%	18	5.79%	7	2.36%	2	1.68%	31	2.36%
McLean	0	0.00%	0	0.00%	9	2.08%	8	2.00%	9	2.38%	9	2.47%	6	5.41%	41	2.43%
Mount Vernon	0	0.00%	0	0.00%	43	10.29%	15	4.44%	31	8.18%	40	11.46%	18	8.87%	147	8.71%
Oakton	0	0.00%	0	0.00%	8	1.41%	7	1.28%	11	2.06%	13	2.58%	4	2.72%	43	1.87%
Robinson	0	0.00%	0	0.00%	8	1.30%	4	0.55%	16	2.37%	11	1.72%	5	2.40%	44	1.54%
South Lakes	0	0.00%	0	0.00%	30	8.98%	20	5.83%	14	4.22%	20	6.87%	12	6.45%	96	6.46%
Stuart	0	0.00%	0	0.00%	26	7.85%	23	6.61%	74	19.95%	26	8.23%	10	11.36%	159	10.94%
West Potomac	0	0.00%	0	0.00%	62	12.13%	45	10.30%	14	3.29%	31	8.71%	56	29.47%	208	10.84%
West Springfield	0	0.00%	0	0.00%	21	4.16%	8	1.52%	28	5.16%	14	3.06%	18	11.76%	89	4.08%
Westfield	0	0.00%	0	0.00%	21	2.46%	10	1.34%	10	1.49%	19	3.05%	8	4.37%	68	2.21%
Woodson	0	0.00%	0	0.00%	10	2.09%	6	1.35%	15	3.53%	10	2.13%	15	7.77%	56	2.79%
Total	1	4.35%	0	0.00%	516	4.30%	276	2.34%	650	5.69%	455	4.34%	263	7.11%	2161	4.37%

TABLE V
RETAINED STUDENTS WHO ATTENDED 2005 SUMMER SCHOOL
AN ANALYSIS OF THEIR 2005-2006 SCHOOL YEAR STATUS

2004-05				2005-2006 Status							
Grade Level	Retained Students	Retained Students Who Attended FCPS Summer School		Promoted		In Same Grade Level		Demoted or Changed Programs		Did Not Return to FCPS	
	No.	No.	%	No.	%	No.	%	No.	%	No.	%
K	177	97	54.8%	8	8.2%	77	79.4%	3	3.1%	9	9.3%
1	165	106	64.2%	11	10.4%	87	82.1%	1	0.9%	7	6.6%
2	59	32	54.2%	5	15.6%	26	81.3%	0	0.0%	1	3.1%
3	31	9	29.0%	2	22.2%	7	77.8%	0	0.0%	0	0.0%
4	15	6	40.0%	1	16.7%	5	83.3%	0	0.0%	0	0.0%
5	8	4	50.0%	2	50.0%	2	50.0%	0	0.0%	0	0.0%
6	32	27	84.4%	21	77.8%	4	14.8%	0	0.0%	2	7.4%
7	585	426	72.8%	389	91.3%	12	2.8%	2	0.5%	23	5.4%
8	558	448	80.3%	411	91.7%	6	1.3%	0	0.0%	31	6.9%
9	516	151	29.3%	66	43.7%	70	46.4%	0	0.0%	15	9.9%
10	276	67	24.3%	34	50.7%	28	41.8%	1	1.5%	4	6.0%
11	650	289	44.5%	76	26.3%	197	68.2%	1	0.3%	12	4.2%
12	455	236	51.9%	185 **	78.4%	23	9.7%	0	0.0%	47	19.9%
GT	12	7	58.3%	6	85.7%	0	0.0%	0	0.0%	1	14.3%
Special Ed *	543	263	48.4%	169	64.3%	65	24.7%	4	1.5%	9	3.4%
Total	4082	2168	53.1%	1386	63.9%	609	28.1%	12	0.6%	161	7.4%

* Special Education - School-Based Self-Contained

** 2005 Summer School Graduates (16 are Special Ed, 3 are grade 11)

TABLE VI
CONDITIONALLY PROMOTED STUDENTS WHO ATTENDED 2005 SUMMER SCHOOL
AN ANALYSIS OF THEIR 2005-2006 SCHOOL YEAR STATUS

Grade Level	2004-05			2005-2006 Status					
	Conditionally Promoted Students	Conditionally Promoted Students Who Attended School		Promoted After Summer School		Retained after Summer School		Did Not Return to FCPS	
	No.	No.	No.	No.	No.	No.	No.	No.	
6	182	160	87.9%	152	95.0%	0	0.0%	8	5.0%
7	369	314	85.1%	298	94.9%	0	0.0%	16	5.1%
8	255	200	78.4%	186	93.0%	1	0.5%	13	6.5%
GT	2	2	100.0%	2	100.0%	0	0.0%	0	0.0%
Special Ed *	285	232	81.4%	223	96.1%	0	0.0%	9	3.9%
Total	1,093	908	83.1%	861	94.8%	1	0.1%	46	5.1%

* Special Education - School-Based Self-Contained