



STATISTICAL REPORT

FAIRFAX COUNTY PUBLIC SCHOOLS  FAIRFAX, VIRGINIA

REPORT OF STUDENT RETENTIONS 2003-04

Purpose

The data in this report were collected as part of the 2003-04 Annual School Report which is required by the Virginia Department of Education. This report on student retentions provides information to support the management of Fairfax County Public Schools.

<u>Contents</u>	<u>Page</u>
Introduction.....	2
Summary.....	3
Five-Year History of County Retention Rates	4
Five-Year History of Retention Rates by Level	5
County Retention Rates by Level	6
 <i>List of Tables</i>	
Table I: Student Retentions by Grade and Level	7
Table II: Student Retentions by School and Grade - Elementary	8
Table III: Student Retentions by School and Grade - Middle	12
Table IV: Student Retentions by School and Grade - High.....	13
Table V: Retained Students Who Attended 2004 Summer School	14
Table VI: Conditionally Promoted Students Who Attended 2004 Summer School	15

Date of Publication
June 2005

INTRODUCTION

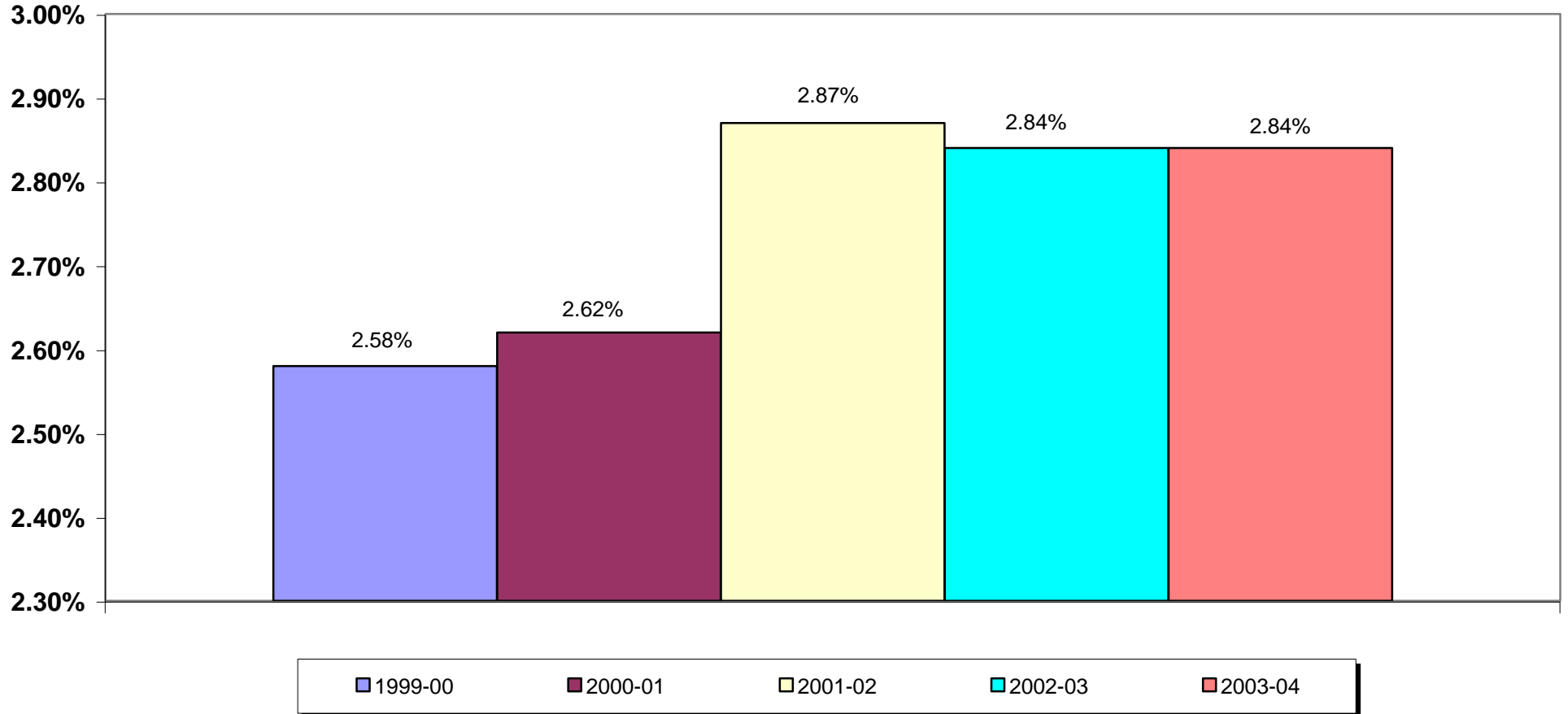
This is a report of retentions for the 2003-04 school year excluding special education centers, Instructional Services alternative centers, Student Services alternative centers, Family and Early Childhood Education (FECEP), preschool, Literacy Program (LP) and postgraduate students.

Inquiries regarding this report should be directed to Information Technology, Decision Support Solutions Team, at 703-329-7727.

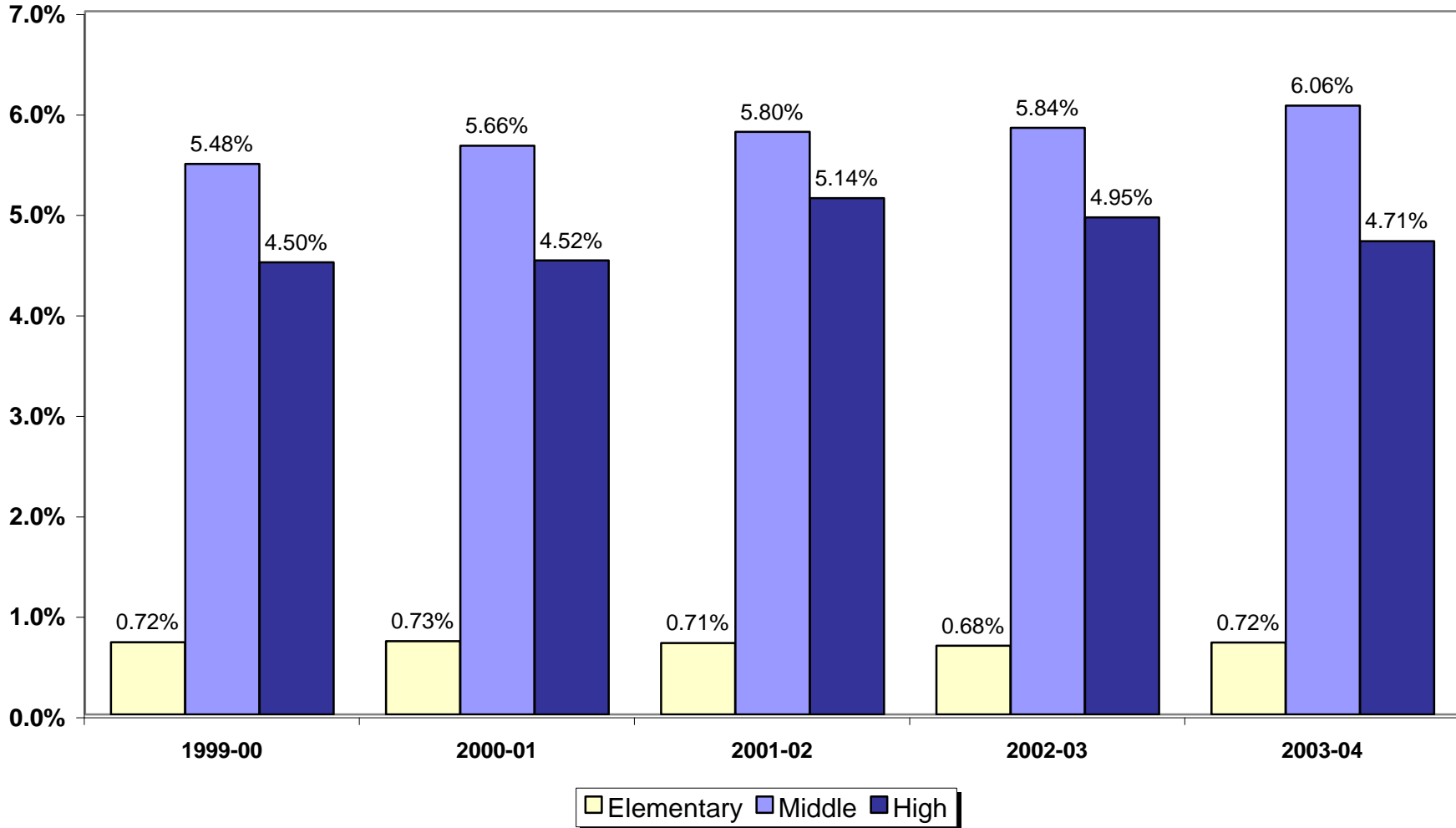
SUMMARY

- Retentions for the 2003-04 school year were 2.84 percent of the student end-of-year membership. The 2003-04 retention rate is an increase of .26 percentage points over the past five years.
- At the elementary level, K-6, the county retention rates ranged from 0.06 percent in sixth grade to 1.83 percent in second grade. See Table I, page 7.
- At the middle school level, 6-8, county retention rate, by grade level, was 2.47 percent for sixth grade, 6.46 percent for seventh grade, and 6.39 percent for eighth grade. See Table I, page 7.
- At the high school level, 9-12, county retention rates ranged from 2.37 percent for tenth grade to 6.09 percent for eleventh grade. See Table I, page 7.
- The median retention rate for elementary schools was 0.49 percent. Retentions rates among elementary schools ranged from 0.00 percent to 3.80 percent. See Table II, pages 8-11.
- The median retention rate for middle schools was 4.93 percent. Retention rates among middle schools ranged from 0.26 percent to 18.26 percent. See Table III, page 12.
- The median retention rate for high schools was 3.40 percent. Retention rates among high schools ranged from 0.00 percent to 20.63 percent. See Table IV, page 13.
- The percentage of 2003-04 retained students who attended summer school was 51.6. Of these students, 65.4 percent were promoted the following year or graduated from summer school. See Table V, page 14.
- There were 1,070 students conditionally promoted in grades 6-8 as part of the Student Accountability Plan. Of these students, 84.8% attended FCPS summer school. Of those who attended summer school, 94.4% were promoted in 2004-2005. See Table VI, page 15.

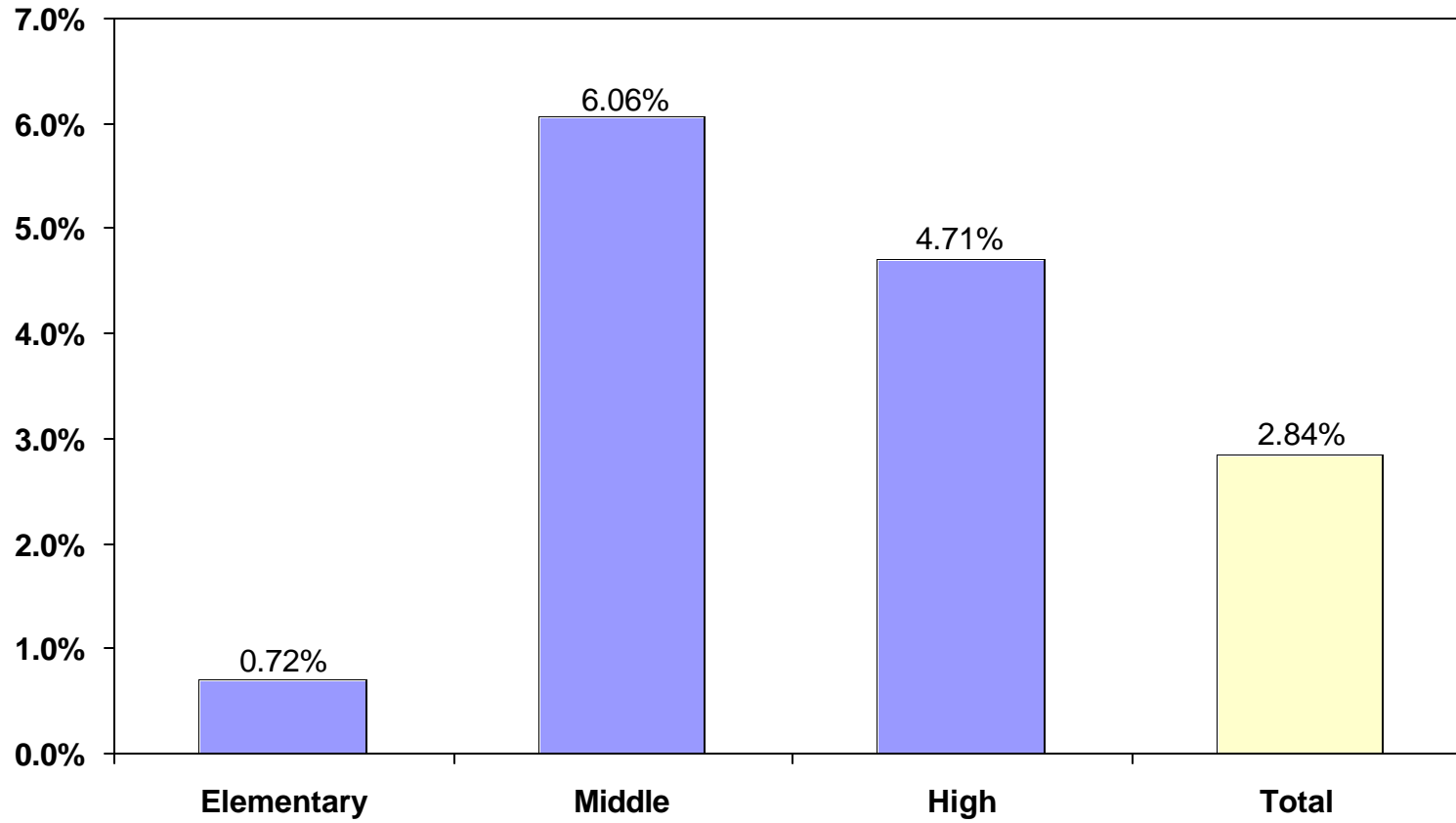
Five-Year History of County Retention Rates



Five-Year History of Retention Rates by Level



County Retention Rates by Level



**TABLE I
STUDENT RETENTIONS BY GRADE AND LEVEL**

	K		1		2		3		4		5		6		SE*		GT**		Total	
	<i>No.</i>		<i>No.</i>		<i>No.</i>		<i>No.</i>		<i>No.</i>		<i>No.</i>		<i>No.</i>		<i>No.</i>		<i>No.</i>		<i>No.</i>	
Elementary	167	1.57%	212	1.83%	71	0.61%	30	0.29%	10	0.10%	12	0.11%	6	0.06%	86	2.16%	0	0.00%	594	0.72%

	6		7		8		SE*		GT**		Total	
	<i>No.</i>		<i>No.</i>		<i>No.</i>		<i>No.</i>		<i>No.</i>		<i>No.</i>	
Middle	21	2.47%	691	6.46%	673	6.39%	223	8.50%	8	0.41%	1,616	6.06%

Note: 6th grade students at three middle schools: Glasgow, Holmes, and Poe

	7***		8***		9		10		11		12		SE*		Total	
	<i>No.</i>		<i>No.</i>		<i>No.</i>		<i>No.</i>		<i>No.</i>		<i>No.</i>		<i>No.</i>		<i>No.</i>	
High	2	11.11%	11	23.40%	553	4.53%	271	2.37%	688	6.09%	467	4.73%	293	8.03%	2,285	4.71%

* *Special Education - School-Based Self-Contained*

** *Gifted/Talented - Center-Based*

*** *7th and 8th Graders at the Alternative Centers*

TABLE II
STUDENT RETENTIONS BY SCHOOL AND GRADE
ELEMENTARY SCHOOLS

	K		1		2		3		4		5		6		SE*		GT**		Total	
	No.		No.		No.		No.		No.		No.		No.		No.		No.		No.	
Dogwood	0	0.00%	0	0.00%	0	0.00%	0	0.00%	0	0.00%	0	0.00%	0	0.00%	0	0.00%	0	0.00%	0	0.00%
Dranesville	0	0.00%	1	1.01%	0	0.00%	0	0.00%	0	0.00%	0	0.00%	0	0.00%	1	3.13%	0	0.00%	2	0.26%
Fairfax Villa	6	11.11%	0	0.00%	1	2.38%	0	0.00%	0	0.00%	0	0.00%	0	0.00%	4	5.88%	0	0.00%	11	2.62%
Fairhill	1	1.59%	7	9.33%	1	1.33%	0	0.00%	0	0.00%	0	0.00%	0	0.00%	6	17.14%	0	0.00%	15	3.01%
Fairview	2	3.03%	0	0.00%	0	0.00%	0	0.00%	0	0.00%	0	0.00%	0	0.00%	0	0.00%	0	0.00%	2	0.33%
Flint Hill	3	3.30%	0	0.00%	0	0.00%	0	0.00%	0	0.00%	0	0.00%	0	0.00%	0	0.00%	0	0.00%	3	0.41%
Floris	2	1.92%	0	0.00%	0	0.00%	0	0.00%	0	0.00%	0	0.00%	1	1.18%	3	9.38%	0	0.00%	6	0.76%
Forest Edge	2	2.82%	7	7.78%	0	0.00%	4	7.84%	0	0.00%	0	0.00%	0	0.00%	0	0.00%	0	0.00%	13	1.75%
Forestdale	1	1.96%	2	3.03%	0	0.00%	0	0.00%	0	0.00%	0	0.00%	0	0.00%	0	0.00%	0	0.00%	3	0.66%
Forestville	5	5.10%	0	0.00%	0	0.00%	0	0.00%	0	0.00%	0	0.00%	0	0.00%	0	0.00%	0	0.00%	5	0.59%
Fort Belvoir	1	0.68%	2	1.35%	0	0.00%	0	0.00%	0	0.00%	0	0.00%	0	0.00%	0	0.00%	0	0.00%	3	0.28%
Fort Hunt	5	8.62%	6	6.90%	2	2.11%	0	0.00%	0	0.00%	3	3.66%	0	0.00%	0	0.00%	0	0.00%	16	2.92%
Fox Mill	3	3.85%	2	2.41%	0	0.00%	0	0.00%	0	0.00%	0	0.00%	0	0.00%	0	0.00%	0	0.00%	5	0.80%
Franconia	0	0.00%	6	7.79%	1	1.69%	2	3.77%	0	0.00%	0	0.00%	0	0.00%	0	0.00%	0	0.00%	9	2.07%
Freedom Hill	0	0.00%	1	1.61%	0	0.00%	0	0.00%	0	0.00%	0	0.00%	0	0.00%	0	0.00%	0	0.00%	1	0.23%
Garfield	1	1.92%	1	2.27%	0	0.00%	0	0.00%	0	0.00%	0	0.00%	0	0.00%	0	0.00%	0	0.00%	2	0.56%
Glen Forest	0	0.00%	3	2.63%	0	0.00%	0	0.00%	0	0.00%	0	0.00%	0	0.00%	0	0.00%	0	0.00%	3	0.40%
Graham Road	1	2.08%	5	8.62%	0	0.00%	0	0.00%	0	0.00%	0	0.00%	0	0.00%	1	3.85%	0	0.00%	7	1.96%
Great Falls	1	1.45%	0	0.00%	0	0.00%	0	0.00%	0	0.00%	0	0.00%	0	0.00%	2	20.00%	0	0.00%	3	0.45%
Greenbriar East	1	0.88%	0	0.00%	0	0.00%	1	0.94%	0	0.00%	0	0.00%	0	0.00%	0	0.00%	0	0.00%	2	0.26%
Greenbriar West	4	5.33%	4	4.94%	1	1.23%	0	0.00%	0	0.00%	0	0.00%	0	0.00%	0	0.00%	0	0.00%	9	1.22%
Groveton	0	0.00%	0	0.00%	0	0.00%	0	0.00%	0	0.00%	0	0.00%	0	0.00%	0	0.00%	0	0.00%	0	0.00%
Gunston	0	0.00%	5	6.58%	2	2.82%	0	0.00%	0	0.00%	0	0.00%	0	0.00%	0	0.00%	0	0.00%	7	1.26%
Halley	3	3.61%	1	1.43%	1	1.27%	0	0.00%	0	0.00%	0	0.00%	1	0.93%	0	0.00%	0	0.00%	6	1.02%
Haycock	1	1.75%	0	0.00%	0	0.00%	0	0.00%	0	0.00%	0	0.00%	0	0.00%	0	0.00%	0	0.00%	1	0.16%
Hayfield	0	0.00%	0	0.00%	0	0.00%	0	0.00%	0	0.00%	0	0.00%	0	0.00%	0	0.00%	0	0.00%	0	0.00%
Herndon	1	1.14%	1	1.06%	0	0.00%	0	0.00%	0	0.00%	0	0.00%	0	0.00%	1	1.75%	0	0.00%	3	0.41%
Hollin Meadows	1	1.02%	0	0.00%	0	0.00%	1	1.47%	0	0.00%	0	0.00%	0	0.00%	0	0.00%	0	0.00%	2	0.33%
Hunt Valley	3	3.75%	1	1.32%	0	0.00%	0	0.00%	0	0.00%	0	0.00%	0	0.00%	1	6.67%	0	0.00%	5	0.79%
Hunters Woods	0	0.00%	0	0.00%	1	1.08%	0	0.00%	0	0.00%	0	0.00%	0	0.00%	1	3.23%	0	0.00%	2	0.22%
Hutchison	0	0.00%	2	2.25%	0	0.00%	1	1.20%	0	0.00%	0	0.00%	1	1.32%	1	3.57%	0	0.00%	5	0.80%
Hybla Valley	0	0.00%	1	0.91%	0	0.00%	0	0.00%	0	0.00%	0	0.00%	0	0.00%	0	0.00%	0	0.00%	1	0.15%
Island Creek	1	1.04%	0	0.00%	0	0.00%	0	0.00%	0	0.00%	0	0.00%	0	0.00%	0	0.00%	0	0.00%	1	0.15%
Keene Mill	0	0.00%	2	3.28%	0	0.00%	2	3.64%	0	0.00%	0	0.00%	0	0.00%	1	3.13%	0	0.00%	5	0.88%
Kent Gardens	1	0.89%	2	1.34%	2	1.48%	0	0.00%	0	0.00%	1	0.89%	0	0.00%	0	0.00%	0	0.00%	6	0.67%

TABLE II
STUDENT RETENTIONS BY SCHOOL AND GRADE
ELEMENTARY SCHOOLS

	K		1		2		3		4		5		6		SE*		GT**		Total	
	No.		No.		No.		No.		No.		No.		No.		No.		No.		No.	
Saratoga	5	4.72%	7	6.67%	0	0.00%	2	1.98%	0	0.00%	0	0.00%	1	0.99%	1	4.00%	0	0.00%	16	2.14%
Sherman	1	2.08%	1	2.27%	2	2.90%	1	1.89%	1	2.00%	0	0.00%	0	0.00%	0	0.00%	0	0.00%	6	1.59%
Shrevewood	0	0.00%	1	2.00%	0	0.00%	0	0.00%	0	0.00%	0	0.00%	0	0.00%	0	0.00%	0	0.00%	1	0.26%
Silverbrook	0	0.00%	0	0.00%	0	0.00%	0	0.00%	0	0.00%	0	0.00%	0	0.00%	0	0.00%	0	0.00%	0	0.00%
Sleepy Hollow	2	3.57%	0	0.00%	1	1.92%	0	0.00%	0	0.00%	0	0.00%	0	0.00%	0	0.00%	0	0.00%	3	0.82%
Spring Hill	4	3.88%	2	1.72%	0	0.00%	0	0.00%	0	0.00%	0	0.00%	0	0.00%	0	0.00%	0	0.00%	6	0.71%
Springfield Estates	1	1.59%	1	1.64%	0	0.00%	1	1.79%	0	0.00%	0	0.00%	0	0.00%	1	10.00%	0	0.00%	4	0.66%
Stenwood	0	0.00%	0	0.00%	0	0.00%	0	0.00%	0	0.00%	0	0.00%	0	0.00%	0	0.00%	0	0.00%	0	0.00%
Stratford Landing	1	1.39%	1	1.35%	0	0.00%	0	0.00%	1	1.89%	0	0.00%	0	0.00%	0	0.00%	0	0.00%	3	0.48%
Sunrise Valley	0	0.00%	0	0.00%	0	0.00%	0	0.00%	0	0.00%	0	0.00%	0	0.00%	0	0.00%	0	0.00%	0	0.00%
Terra-Centre	0	0.00%	0	0.00%	0	0.00%	0	0.00%	0	0.00%	0	0.00%	0	0.00%	1	3.85%	0	0.00%	1	0.18%
Terrasat	2	3.03%	1	1.30%	1	1.15%	0	0.00%	0	0.00%	0	0.00%	0	0.00%	1	2.78%	0	0.00%	5	0.93%
Timber Lane	0	0.00%	1	1.56%	0	0.00%	0	0.00%	0	0.00%	0	0.00%	0	0.00%	0	0.00%	0	0.00%	1	0.21%
Union Mill	0	0.00%	2	1.63%	0	0.00%	0	0.00%	0	0.00%	0	0.00%	0	0.00%	0	0.00%	0	0.00%	2	0.24%
Vienna	0	0.00%	3	6.00%	0	0.00%	0	0.00%	0	0.00%	0	0.00%	0	0.00%	0	0.00%	0	0.00%	3	0.97%
Virginia Run	1	0.85%	2	1.52%	1	0.85%	0	0.00%	0	0.00%	0	0.00%	0	0.00%	2	2.99%	0	0.00%	6	0.63%
Wakefield Forest	2	3.45%	0	0.00%	0	0.00%	0	0.00%	0	0.00%	0	0.00%	0	0.00%	0	0.00%	0	0.00%	2	0.45%
Waples Mill	0	0.00%	2	1.65%	0	0.00%	0	0.00%	0	0.00%	0	0.00%	0	0.00%	0	0.00%	0	0.00%	2	0.24%
Washington Mill	1	1.64%	9	13.04%	1	1.41%	1	1.72%	1	1.52%	0	0.00%	0	0.00%	3	8.82%	0	0.00%	16	3.30%
Waynwood	0	0.00%	0	0.00%	0	0.00%	0	0.00%	0	0.00%	0	0.00%	0	0.00%	0	0.00%	0	0.00%	0	0.00%
West Springfield	0	0.00%	1	1.64%	1	1.92%	0	0.00%	0	0.00%	0	0.00%	0	0.00%	0	0.00%	0	0.00%	2	0.49%
Westbriar	0	0.00%	0	0.00%	0	0.00%	0	0.00%	0	0.00%	0	0.00%	0	0.00%	0	0.00%	0	0.00%	0	0.00%
Westgate	0	0.00%	0	0.00%	0	0.00%	0	0.00%	0	0.00%	0	0.00%	0	0.00%	1	4.00%	0	0.00%	1	0.31%
Westlawn	3	4.05%	3	3.53%	1	1.28%	0	0.00%	0	0.00%	0	0.00%	0	0.00%	1	2.00%	0	0.00%	8	1.39%
Weyanoke	0	0.00%	1	1.18%	0	0.00%	0	0.00%	0	0.00%	0	0.00%	0	0.00%	0	0.00%	0	0.00%	1	0.20%
White Oaks	1	1.45%	1	1.23%	1	1.23%	0	0.00%	0	0.00%	0	0.00%	0	0.00%	0	0.00%	0	0.00%	3	0.41%
Willow Springs	0	0.00%	2	2.35%	0	0.00%	0	0.00%	0	0.00%	0	0.00%	0	0.00%	0	0.00%	0	0.00%	2	0.24%
Wolftrap	0	0.00%	1	1.25%	0	0.00%	0	0.00%	0	0.00%	0	0.00%	0	0.00%	0	0.00%	0	0.00%	1	0.18%
Woodburn	0	0.00%	0	0.00%	0	0.00%	0	0.00%	0	0.00%	0	0.00%	0	0.00%	0	0.00%	0	0.00%	0	0.00%
Woodlawn	0	0.00%	0	0.00%	0	0.00%	0	0.00%	0	0.00%	0	0.00%	0	0.00%	0	0.00%	0	0.00%	0	0.00%
Woodley Hills	3	3.41%	7	8.33%	2	3.23%	0	0.00%	0	0.00%	0	0.00%	0	0.00%	1	2.00%	0	0.00%	13	2.53%
Total	167	1.57%	212	1.83%	71	0.61%	30	0.29%	10	0.10%	12	0.11%	6	0.06%	86	2.16%	0	0.00%	594	0.72%

**TABLE III
STUDENT RETENTIONS BY SCHOOL AND GRADE
MIDDLE SCHOOLS**

	6		7		8		SE*		GT**		Total	
	No.		No.		No.		No.		No.		No.	
Carson	0	0.00%	12	3.06%	4	1.00%	5	6.33%	0	0.00%	21	1.91%
Cooper	0	0.00%	2	0.48%	0	0.00%	1	1.43%	0	0.00%	3	0.32%
Franklin	0	0.00%	0	0.00%	1	0.22%	4	4.35%	0	0.00%	5	0.50%
Frost	0	0.00%	8	2.16%	7	1.83%	0	0.00%	0	0.00%	15	1.36%
Glasgow	2	0.65%	37	12.37%	47	17.15%	16	14.55%	2	1.82%	104	9.45%
Hayfield	0	0.00%	36	5.50%	33	5.38%	6	4.72%	0	0.00%	75	5.38%
Herndon	0	0.00%	61	11.55%	60	11.58%	36	22.36%	0	0.00%	157	13.01%
Holmes	7	3.27%	9	3.50%	32	12.70%	4	3.96%	0	0.00%	52	6.31%
Hughes	0	0.00%	27	9.31%	27	8.71%	5	4.39%	0	0.00%	59	6.61%
Irving	0	0.00%	24	4.22%	22	4.34%	8	7.08%	0	0.00%	54	4.54%
Jackson	0	0.00%	91	18.31%	80	17.98%	22	19.13%	0	0.00%	193	18.26%
Key	0	0.00%	74	16.86%	28	7.22%	15	12.40%	0	0.00%	117	12.34%
Kilmer	0	0.00%	9	3.19%	16	5.78%	3	3.33%	0	0.00%	28	2.96%
Lake Braddock	0	0.00%	32	5.62%	29	4.97%	3	4.69%	0	0.00%	64	4.72%
Lanier	0	0.00%	20	4.85%	37	9.20%	1	1.06%	0	0.00%	58	6.39%
Liberty	0	0.00%	6	1.18%	28	5.24%	1	0.70%	0	0.00%	35	2.96%
Longfellow	0	0.00%	4	1.05%	20	5.62%	4	6.78%	3	1.11%	31	2.91%
Poe	12	3.65%	4	1.08%	5	1.45%	5	3.97%	0	0.00%	26	2.22%
Robinson	0	0.00%	29	4.68%	25	4.16%	11	12.22%	0	0.00%	65	4.96%
Rocky Run	0	0.00%	11	3.78%	13	4.53%	9	18.37%	0	0.00%	33	4.05%
Sandburg	0	0.00%	69	14.20%	49	10.89%	13	12.87%	1	0.78%	132	11.32%
Stone	0	0.00%	34	6.80%	16	2.80%	8	7.62%	0	0.00%	58	4.93%
Thoreau	0	0.00%	0	0.00%	2	0.53%	0	0.00%	0	0.00%	2	0.26%
Twain	0	0.00%	24	6.84%	33	9.17%	9	5.03%	2	1.20%	68	6.44%
Whitman	0	0.00%	68	15.21%	59	14.32%	34	25.95%	0	0.00%	161	16.26%
Total	21	2.47%	691	6.46%	673	6.39%	223	8.50%	8	0.41%	1,616	6.06%

**TABLE IV
STUDENT RETENTIONS BY SCHOOL AND GRADE
HIGH SCHOOLS**

	7		8		9		10		11		12		SE*		Total	
	No.		No.		No.		No.		No.		No.		No.		No.	
ALC at Bryant	1	16.67%	10	41.67%	1	5.00%	1	8.33%	0	0.00%	0	0.00%	0	0.00%	13	20.63%
ALC at Dunn Loring	0	0.00%	0	0.00%	0	0.00%	0	0.00%	0	0.00%	0	0.00%	0	0.00%	0	0.00%
ALC at Eleven Oaks	1	12.50%	1	6.25%	0	0.00%	0	0.00%	0	0.00%	0	0.00%	0	0.00%	2	3.28%
Annandale	0	0.00%	0	0.00%	34	5.16%	11	1.96%	87	14.19%	52	11.85%	11	6.04%	195	7.94%
Centreville	0	0.00%	0	0.00%	16	3.04%	10	2.14%	20	4.94%	15	3.43%	7	4.32%	68	3.40%
Chantilly	0	0.00%	0	0.00%	13	2.00%	20	3.29%	18	2.99%	16	3.24%	13	5.91%	80	3.11%
Edison	0	0.00%	0	0.00%	27	6.21%	20	4.88%	24	6.82%	27	8.23%	17	9.34%	115	6.74%
Fairfax	0	0.00%	0	0.00%	15	3.07%	3	0.62%	10	2.17%	19	4.45%	4	2.44%	51	2.52%
Falls Church	0	0.00%	0	0.00%	22	6.57%	16	5.28%	47	14.42%	25	9.62%	20	10.58%	130	9.20%
Hayfield	0	0.00%	0	0.00%	36	5.51%	20	3.41%	27	4.80%	34	6.65%	13	7.98%	130	5.25%
Herndon	0	0.00%	0	0.00%	64	11.23%	14	2.67%	39	7.34%	17	3.49%	16	13.56%	150	6.73%
Jefferson Sci/Tech	0	0.00%	0	0.00%	0	0.00%	0	0.00%	0	0.00%	0	0.00%	0	0.00%	0	0.00%
Lake Braddock	0	0.00%	0	0.00%	24	3.85%	15	2.37%	36	5.58%	29	5.19%	3	2.73%	107	4.17%
Langley	0	0.00%	0	0.00%	4	0.86%	0	0.00%	0	0.00%	3	0.71%	0	0.00%	7	0.37%
Lee	0	0.00%	0	0.00%	38	7.21%	15	3.36%	77	16.52%	21	4.91%	18	13.95%	169	8.46%
Madison	0	0.00%	0	0.00%	10	2.17%	3	0.75%	13	3.37%	8	2.47%	11	8.21%	45	2.64%
Marshall	0	0.00%	0	0.00%	7	2.32%	5	1.64%	12	3.75%	8	3.77%	5	4.67%	37	2.97%
McLean	0	0.00%	0	0.00%	10	2.36%	4	1.03%	8	2.11%	18	5.71%	10	10.31%	50	3.12%
Mount Vernon	0	0.00%	0	0.00%	37	9.87%	10	2.75%	50	12.99%	23	7.93%	14	6.19%	134	8.17%
Oakton	0	0.00%	0	0.00%	10	1.83%	10	1.81%	10	1.83%	10	2.03%	5	3.73%	45	1.98%
Robinson	0	0.00%	0	0.00%	14	1.85%	10	1.45%	19	2.68%	23	3.56%	4	2.08%	70	2.34%
South Lakes	0	0.00%	0	0.00%	24	7.02%	7	2.06%	19	6.29%	29	8.68%	28	12.12%	107	6.91%
Stuart	0	0.00%	0	0.00%	47	12.14%	23	6.71%	99	24.44%	18	7.66%	19	23.75%	206	14.21%
West Potomac	0	0.00%	0	0.00%	51	9.94%	17	3.69%	16	3.93%	29	7.53%	22	12.22%	135	6.94%
West Springfield	0	0.00%	0	0.00%	23	4.35%	24	4.48%	35	6.82%	19	3.86%	15	11.28%	116	5.27%
Westfield	0	0.00%	0	0.00%	19	2.66%	11	1.59%	15	2.36%	20	3.34%	20	10.10%	85	2.99%
Woodson	0	0.00%	0	0.00%	7	1.63%	2	0.50%	7	1.52%	4	1.15%	18	7.44%	38	2.02%
Total	2	11.11%	11	23.40%	553	4.53%	271	2.37%	688	6.09%	467	4.73%	293	8.03%	2,285	4.71%

TABLE V
RETAINED STUDENTS WHO ATTENDED 2004 SUMMER SCHOOL
AN ANALYSIS OF THEIR 2004-2005 SCHOOL YEAR STATUS

2003-04				2004-2005 Status							
Grade Level	Retained Students	Retained Students Who Attended FCPS Summer School		Promoted		In Same Grade Level		Demoted or Changed Programs		Did Not Return to FCPS	
	No.	No.	%	No.	%	No.	%	No.	%	No.	%
K	167	83	49.7%	14	16.9%	57	68.7%	3	3.6%	9	10.8%
1	212	104	49.1%	6	5.8%	92	88.5%	1	1.0%	5	4.8%
2	71	36	50.7%	3	8.3%	24	66.7%	4	11.1%	5	13.9%
3	30	17	56.7%	3	17.6%	10	58.8%	1	5.9%	3	17.6%
4	10	3	30.0%	1	33.3%	1	33.3%	0	0.0%	1	33.3%
5	12	8	66.7%	0	0.0%	5	62.5%	0	0.0%	3	37.5%
6	28	18	64.3%	16	88.9%	1	5.6%	0	0.0%	1	5.6%
7	692	477	68.9%	429	89.9%	18	3.8%	2	0.4%	28	5.9%
8	684	520	76.0%	463	89.0%	18	3.5%	0	0.0%	39	7.5%
9	553	171	30.9%	90	52.6%	67	39.2%	3	1.8%	11	6.4%
10	271	74	27.3%	41	55.4%	30	40.5%	0	0.0%	3	4.1%
11	688	296	43.0%	73	24.7%	208	70.3%	2	0.7%	13	4.4%
12	467	238	51.0%	176 **	73.9%	23	9.7%	1	0.4%	38	16.0%
GT	8	8	100.0%	7	87.5%	0	0.0%	0	0.0%	1	12.5%
Special Ed *	602	268	44.5%	197 **	73.5%	54	20.1%	5	1.9%	12	4.5%
Total	4,495	2,321	51.6%	1,519	65.4%	608	26.2%	22	0.9%	172	7.4%

* Special Education - School-Based Self-Contained

** 2004 Summer School Graduates (16 are Special Ed)

TABLE VI
CONDITIONALLY PROMOTED STUDENTS WHO ATTENDED 2004 SUMMER SCHOOL
AN ANALYSIS OF THEIR 2004-2005 SCHOOL YEAR STATUS

Grade Level	2003-04		2004-2005 Status				
	Conditionally Promoted Students	Conditionally Promoted Students Who Attended School	Promoted After Summer School		Retained after Summer School		Did Not Return to FCPS
	No.	No.	No.	No.	No.	No.	
6	144	128 88.9%	122 95.3%	2 1.6%	4 3.1%		
7	383	329 85.9%	312 94.8%	1 0.3%	16 4.9%		
8	304	258 84.9%	242 93.8%	0 0.0%	16 6.2%		
GT	0	0	0	0	0		
Special Ed *	239	192 80.3%	180 93.8%	2 1.0%	10 5.2%		
Total	1,070	907 84.8%	856 94.4%	5 0.6%	46 5.1%		

* Special Education - School-Based Self-Contained