



STATISTICAL REPORT

FAIRFAX COUNTY PUBLIC SCHOOLS  FAIRFAX, VIRGINIA

REPORT OF STUDENT MEMBERSHIP BY ETHNIC GROUP AND GENDER September 30, 2008

Purpose

This report has been prepared as an annual review of student ethnic groups for the 2008-2009 school year. It provides management information for Fairfax County Public Schools.

Contents

Page

Preface:

Introduction.....	2
2008 – 2009 Student Ethnic and Gender Membership.....	3
1988 to 2008 Ethnic Membership at Five-Year Intervals.....	4
2004 to 2008 Change in Minority Membership.....	6
1988 and 2008 Change in Minority Membership.....	7

List of Data Tables:

Elementary School Membership by Ethnic Group and Gender.....	8
Middle School Membership by Ethnic Group and Gender.....	12
High School Membership by Ethnic Group and Gender.....	13
Special Education Center Membership by Ethnic Group and Gender.....	14
Alternative Education by Ethnic Group and Gender.....	15

Date of Publication:

October 2008

INTRODUCTION

The Report of Student Membership by Ethnic Group and Gender is based on student membership data as of September 30, 2008. Ethnic student data are collected from the parents/guardians at the time of initial Fairfax County Public School (FCPS) registration. No student is counted in more than one category.

FCPS uses the ethnic classifications established by the United States Department of Education pursuant to Title VI of the Civil Rights Act of 1964, Title IX of the Education Amendments of 1972, and under section 504 of the Rehabilitation Act of 1973. These classifications include the categories American Indian or Alaskan Native, Asian or Pacific Islander, Hispanic, Black, and White. A local code titled "Undesignated" is used when the parent/guardian of a student refuses to identify the student with one of the five federal classifications. Beginning with the 1994-95 school year, FCPS added "Multiracial" to the list of ethnic classifications. The term Multiracial is defined as "persons whose parents have origins in two or more racial or ethnic groups." Beginning with the 2003-04 school year, the Virginia Department of Education and FCPS added "Hawaiian/Pacific Islander" to the list of ethnic classifications.

For local reporting purposes, there are eight ethnic classifications: the six classifications prescribed for federal and state reporting, Undesignated, and Multiracial. The term minorities includes the categories American Indian or Alaskan Native, Asian, Hawaiian/Pacific Islander, Hispanic, Black, and Multiracial.

Membership is reported by elementary, middle and high schools, special education centers, and alternative education schools and centers.

- As of September 30, 2008, Fairfax County Public School student membership was 168,742. Table I displays the number and percentage of students in each ethnic and gender category and level.

TABLE I
2008 - 2009 STUDENT ETHNIC AND GENDER MEMBERSHIP

	Amer. Indian/Alaskan		Asian		Black		Hawaiian/Pacific Islander		Hispanic		Multiracial		Undesignated		White		Female		Male		Total
	No.	%	No.	%	No.	%	No.	%	No.	%	No.	%	No.	%	No.	%	No.	%	No.	%	No.
Elementary	137	0.2%	16,319	18.6%	9,046	10.3%	107	0.1%	16,552	18.9%	6,285	7.2%	465	0.5%	38,737	44.2%	42,228	48.2%	45,420	51.8%	87,648
Middle	78	0.3%	4,843	18.4%	2,788	10.6%	16	0.1%	4,663	17.7%	1,411	5.4%	66	0.3%	12,501	47.4%	12,805	48.6%	13,561	51.4%	26,366
High	169	0.3%	9,757	18.8%	5,443	10.5%	38	0.1%	8,009	15.5%	2,316	4.5%	101	0.2%	25,968	50.1%	25,039	48.3%	26,762	51.7%	51,801
Special Ed. Centers	2	0.3%	95	13.0%	134	18.4%	0	0.0%	135	18.5%	34	4.7%	2	0.3%	326	44.8%	243	33.4%	485	66.6%	728
Alternative Education	4	0.2%	210	9.5%	376	17.1%	0	0.0%	1,190	54.1%	52	2.4%	2	0.1%	365	16.6%	923	42.0%	1,276	58.0%	2,199
County Totals	390	0.2%	31,224	18.5%	17,787	10.5%	161	0.1%	30,549	18.1%	10,098	6.0%	636	0.4%	77,897	46.2%	81,238	48.1%	87,504	51.9%	168,742

- Table II displays the number and percentage of students in each ethnic category for the past twenty-one year period using five-year intervals. Please refer to Figure 1 for a graphical representation of this data and Table IV for the percentage change for each ethnic group.

TABLE II

1988 TO 2008 ETHNIC MEMBERSHIP AT FIVE-YEAR INTERVALS

	Amer. Indian/ Alaskan		Asian		Black		Hawaiian/ Pacific Islander		Hispanic		Multiracial		Undesignated		White		Total
1988-1989	274	0.2%	13,341	10.4%	11,894	9.3%	-	-	6,160	4.8%	-	-	70	0.1%	96,616	75.3%	128,355
1993-1994	344	0.3%	17,672	12.9%	14,735	10.8%	-	-	11,606	8.5%	-	-	192	0.1%	92,311	67.4%	136,860
1998-1999	532	0.4%	21,641	14.4%	16,981	11.3%	-	-	16,332	10.9%	3,050	2.0%	261	0.2%	91,707	60.9%	150,504
2003-2004	594	0.4%	27,561	16.9%	17,460	10.7%	1	0.0%	24,720	15.1%	6,583	4.0%	412	0.3%	86,068	52.7%	163,399
2008-2009	390	0.2%	31,224	18.5%	17,787	10.5%	161	0.1%	30,549	18.1%	10,098	6.0%	636	0.4%	77,897	46.2%	168,742

FIGURE I
FCPS 1988-2008 ETHNIC DISTRIBUTION AT FIVE-YEAR INTERVALS

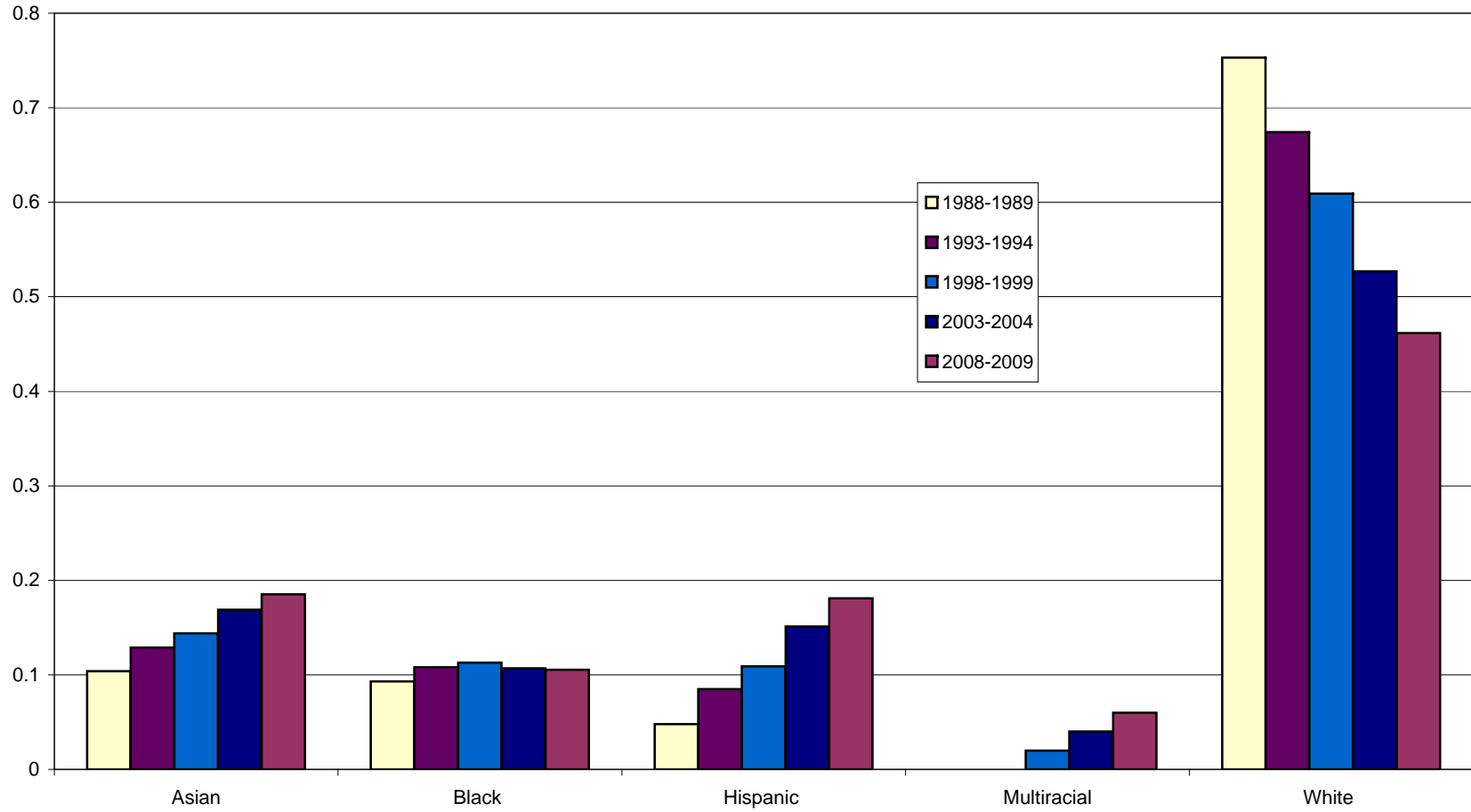


TABLE III
2004 TO 2008 CHANGE IN MINORITY MEMBERSHIP

	Amer. Indian/ Alaskan			Asian			Black			Hawaiian/ Pacific Islander			Hispanic			Multiracial			Minority			Total	
	No.	%	One-Yr. Change	No.	%	One-Yr. Change	No.	%	One-Yr. Change	No.	%	One-Yr. Change	No.	%	One-Yr. Change	No.	%	One-Yr. Change	No.	%	One-Yr. Change	No.	
2004-05	563	0.3%		28,252	17.2%		17,480	10.7%		3	0.0%		25,441	15.5%		7,355	4.5%		79,094	48.3%		163,830	
			-13.1%			0.9%			0.7%			1766.7%			2.9%			9.7%			2.3%		
2005-06	489	0.3%		28,516	17.4%		17,603	10.8%		56	0.0%		26,169	16.0%		8,069	4.9%		80,902	49.5%		163,534	
			-4.7%			2.2%			-0.7%			50.0%			2.3%			8.4%			2.1%		
2006-07	466	0.3%		29,138	17.8%		17,483	10.7%		84	0.1%		26,761	16.4%		8,747	5.3%		82,595	50.5%		163,593	
			-11.2%			3.8%			0.7%			46.4%			5.6%			7.5%			4.2%		
2007-08	414	0.3%		30,232	18.3%		17,614	10.6%		123	0.1%		28,251	17.1%		9,403	5.7%		86,037	52.0%		165,439	
			-5.8%			3.3%			1.0%			30.9%			8.1%			7.4%			4.8%		
2008-09	390	0.2%		31,224	18.5%		17,787	10.5%		161	0.1%		30,549	18.1%		10,098	6.0%		90,209			168,742	

- Table IV displays an increase in minority membership from 31,669 in 1988 to 90,209 in September 2008. This is a 28.8 percentage point increase in FCPS minority membership over the past twenty-one year period.

TABLE IV

1988 AND 2008 CHANGE IN MINORITY MEMBERSHIP

	Amer. Indian/ Alaskan		Asian		Black		Hawaiian/ Pacific Islander		Hispanic		Multiracial		Minority		Total
	No.	%	No.	%	No.	%	No.	%	No.	%	No.	%	No.	%	No.
1988-89	274	0.2%	13,341	10.4%	11,894	9.3%			6,160	4.8%	-		31,669	24.7%	128,355
2008-09	390	0.2%	31,224	18.5%	17,787	10.5%	161	0.1%	30,549	18.1%	10,098	6.0%	90,209	53.5%	168,472
Change in Percentage Points		0.0		8.1		1.2		0.1		13.3		6.0		28.8	

FAIRFAX COUNTY PUBLIC SCHOOLS
STUDENT MEMBERSHIP BY
ETHNIC GROUP AND GENDER
SEPTEMBER 2008

	AMER INDIAN/ ALASKAN		ASIAN		BLACK		HAWAIIAN/ PACIFIC ISLANDER		HISPANIC		MULTIRACIAL		UNDESIGNATED		WHITE		FEMALE		MALE		TOTAL
	No.	Percent	No.	Percent	No.	Percent	No.	Percent	No.	Percent	No.	Percent	No.	Percent	No.	Percent	No.	Percent	No.	Percent	
ALDRIN	0	0.0%	146	24.5%	56	9.4%	0	0.0%	50	8.4%	51	8.6%	13	2.2%	280	47.0%	306	51.3%	290	48.7%	596
ANNANDALE TERRACE	0	0.0%	162	21.2%	109	14.3%	0	0.0%	378	49.5%	35	4.6%	1	0.1%	78	10.2%	382	50.1%	381	49.9%	763
ARCHER	3	0.4%	150	21.1%	21	3.0%	0	0.0%	41	5.8%	50	7.0%	11	1.5%	434	61.1%	346	48.7%	364	51.3%	710
ARMSTRONG	1	0.2%	77	14.8%	27	5.2%	0	0.0%	29	5.6%	39	7.5%	1	0.2%	345	66.5%	231	44.5%	288	55.5%	519
BAILEYS	1	0.1%	130	13.7%	53	5.6%	0	0.0%	448	47.3%	72	7.6%	2	0.2%	242	25.5%	468	49.4%	480	50.6%	948
BEECH TREE	1	0.2%	129	26.2%	19	3.9%	0	0.0%	202	41.1%	33	6.7%	1	0.2%	107	21.7%	257	52.2%	235	47.8%	492
BELLE VIEW	1	0.2%	25	5.8%	50	11.7%	0	0.0%	109	25.4%	28	6.5%	1	0.2%	215	50.1%	182	42.4%	247	57.6%	429
BELVEDERE	0	0.0%	52	9.5%	47	8.5%	0	0.0%	276	50.2%	32	5.8%	0	0.0%	143	26.0%	251	45.6%	299	54.4%	550
BONNIE BRAE	0	0.0%	133	19.2%	45	6.5%	0	0.0%	111	16.0%	77	11.1%	0	0.0%	327	47.2%	331	47.8%	362	52.2%	693
BRADDOCK	2	0.3%	145	22.8%	56	8.8%	0	0.0%	299	46.9%	37	5.8%	2	0.3%	96	15.1%	323	50.7%	314	49.3%	637
BREN MAR PARK	0	0.0%	90	22.6%	70	17.6%	0	0.0%	152	38.2%	12	3.0%	0	0.0%	74	18.6%	171	43.0%	227	57.0%	398
BROOKFIELD	0	0.0%	177	23.0%	97	12.6%	1	0.1%	233	30.3%	48	6.3%	2	0.3%	210	27.3%	360	46.9%	408	53.1%	768
BRYANT HEADSTART	0	0.0%	6	14.3%	12	28.6%	0	0.0%	19	45.2%	2	4.8%	0	0.0%	3	7.1%	19	45.2%	23	54.8%	42
BUCKNELL	0	0.0%	13	4.6%	53	18.9%	0	0.0%	158	56.4%	15	5.4%	0	0.0%	41	14.6%	118	42.1%	162	57.9%	280
BULL RUN	2	0.2%	239	26.3%	99	10.9%	0	0.0%	148	16.3%	60	6.6%	1	0.1%	361	39.7%	424	46.6%	486	53.4%	910
BUSH HILL	2	0.4%	76	16.1%	98	20.8%	0	0.0%	63	13.4%	37	7.9%	1	0.2%	194	41.2%	228	48.4%	243	51.6%	471
CAMELOT	0	0.0%	83	17.9%	33	7.1%	0	0.0%	128	27.6%	33	7.1%	3	0.6%	184	39.7%	225	48.5%	239	51.5%	464
CAMERON	3	0.6%	36	6.9%	105	20.2%	0	0.0%	261	50.3%	36	6.9%	1	0.2%	77	14.8%	268	51.6%	251	48.4%	519
CANTERBURY WOODS	1	0.1%	164	23.4%	22	3.1%	0	0.0%	54	7.7%	37	5.3%	1	0.1%	422	60.2%	334	47.6%	367	52.4%	701
CARDINAL FOREST	0	0.0%	76	13.7%	62	11.2%	1	0.2%	116	20.9%	55	9.9%	5	0.9%	240	43.2%	261	47.0%	294	53.0%	555
CENTRE RIDGE	0	0.0%	263	31.1%	98	11.6%	4	0.5%	171	20.2%	61	7.2%	5	0.6%	243	28.8%	398	47.1%	447	52.9%	845
CENTREVILLE	0	0.0%	265	30.0%	92	10.4%	0	0.0%	123	13.9%	67	7.6%	5	0.6%	330	37.4%	428	48.5%	454	51.5%	882
CHERRY RUN	0	0.0%	90	18.0%	23	4.6%	0	0.0%	21	4.2%	38	7.6%	0	0.0%	328	65.6%	238	47.6%	262	52.4%	500
CHESTERBROOK	0	0.0%	34	6.2%	7	1.3%	1	0.2%	36	6.5%	39	7.1%	1	0.2%	432	78.5%	277	50.4%	273	49.6%	550
CHURCHILL ROAD	0	0.0%	150	21.4%	4	0.6%	0	0.0%	20	2.9%	56	8.0%	0	0.0%	471	67.2%	331	47.2%	370	52.8%	701
CLEARVIEW	1	0.2%	97	17.2%	45	8.0%	0	0.0%	171	30.3%	38	6.7%	2	0.4%	211	37.3%	245	43.4%	320	56.6%	565
CLERMONT	0	0.0%	35	8.1%	27	6.3%	4	0.9%	80	18.6%	27	6.3%	5	1.2%	252	58.6%	207	48.1%	223	51.9%	430
CLIFTON	0	0.0%	23	6.1%	3	0.8%	1	0.3%	9	2.4%	32	8.5%	8	2.1%	301	79.8%	171	45.4%	206	54.6%	377
COLUMBIA	0	0.0%	74	19.2%	60	15.5%	1	0.3%	82	21.2%	35	9.1%	3	0.8%	131	33.9%	181	46.9%	205	53.1%	386
COLVIN RUN	1	0.1%	118	14.9%	10	1.3%	0	0.0%	26	3.3%	60	7.6%	0	0.0%	579	72.9%	385	48.5%	409	51.5%	794
CRESTWOOD	1	0.2%	104	19.2%	26	4.8%	0	0.0%	325	60.1%	20	3.7%	5	0.9%	60	11.1%	246	45.5%	295	54.5%	541
CROSSFIELD	1	0.1%	123	15.9%	18	2.3%	5	0.6%	32	4.1%	37	4.8%	0	0.0%	556	72.0%	388	50.3%	384	49.7%	772
CUB RUN	0	0.0%	76	16.2%	30	6.4%	4	0.9%	52	11.1%	43	9.2%	1	0.2%	263	56.1%	222	47.3%	247	52.7%	469
CUNNINGHAM PARK	2	0.5%	53	12.7%	9	2.2%	0	0.0%	82	19.7%	31	7.5%	0	0.0%	239	57.5%	198	47.6%	218	52.4%	416
DANIELS RUN	5	0.7%	133	17.9%	51	6.9%	3	0.4%	172	23.1%	60	8.1%	7	0.9%	312	42.0%	369	49.7%	374	50.3%	743
DEER PARK	0	0.0%	147	20.5%	36	5.0%	2	0.3%	79	11.0%	55	7.7%	20	2.8%	377	52.7%	339	47.3%	377	52.7%	716
DOGWOOD	0	0.0%	54	8.7%	99	16.0%	5	0.8%	332	53.6%	32	5.2%	2	0.3%	95	15.3%	322	52.0%	297	48.0%	619
DRANESVILLE	1	0.2%	76	12.2%	39	6.2%	0	0.0%	156	25.0%	44	7.0%	3	0.5%	306	49.0%	286	45.8%	339	54.2%	625

FAIRFAX COUNTY PUBLIC SCHOOLS
STUDENT MEMBERSHIP BY
ETHNIC GROUP AND GENDER
SEPTEMBER 2008

	AMER INDIAN/ ALASKAN		ASIAN		BLACK		HAWAIIAN/ PACIFIC ISLANDER		HISPANIC		MULTIRACIAL		UNDESIGNATED		WHITE		FEMALE		MALE		TOTAL
	No.	Percent	No.	Percent	No.	Percent	No.	Percent	No.	Percent	No.	Percent	No.	Percent	No.	Percent	No.	Percent	No.	Percent	
EAGLE VIEW	2	0.2%	324	39.6%	114	13.9%	1	0.1%	76	9.3%	65	7.9%	3	0.4%	233	28.5%	369	45.1%	449	54.9%	818
FAIRFAX VILLA	1	0.3%	103	26.1%	47	11.9%	0	0.0%	34	8.6%	25	6.3%	1	0.3%	183	46.4%	191	48.5%	203	51.5%	394
FAIRHILL	0	0.0%	214	37.9%	36	6.4%	1	0.2%	83	14.7%	47	8.3%	2	0.4%	181	32.1%	279	49.5%	285	50.5%	564
FAIRVIEW	0	0.0%	82	14.1%	30	5.2%	1	0.2%	43	7.4%	34	5.9%	0	0.0%	391	67.3%	281	48.4%	300	51.6%	581
FLINT HILL	0	0.0%	79	11.9%	10	1.5%	3	0.5%	28	4.2%	52	7.8%	0	0.0%	493	74.1%	323	48.6%	342	51.4%	665
FLORIS	0	0.0%	388	46.2%	40	4.8%	0	0.0%	30	3.6%	46	5.5%	1	0.1%	335	39.9%	414	49.3%	426	50.7%	840
FOREST EDGE	3	0.4%	170	20.9%	142	17.5%	0	0.0%	70	8.6%	50	6.2%	6	0.7%	371	45.7%	368	45.3%	444	54.7%	812
FORESTDALE	0	0.0%	144	27.3%	108	20.5%	0	0.0%	115	21.8%	33	6.3%	1	0.2%	127	24.1%	264	50.0%	264	50.0%	528
FORESTVILLE	2	0.3%	118	15.5%	16	2.1%	0	0.0%	17	2.2%	35	4.6%	1	0.1%	572	75.2%	372	48.9%	389	51.1%	761
FORT BELVOIR	7	0.5%	24	1.6%	352	23.8%	14	0.9%	133	9.0%	209	14.1%	0	0.0%	740	50.0%	740	50.0%	739	50.0%	1479
FORT HUNT	2	0.4%	22	3.9%	117	20.8%	0	0.0%	51	9.1%	68	12.1%	6	1.1%	296	52.7%	287	51.1%	275	48.9%	562
FOX MILL	0	0.0%	129	19.1%	14	2.1%	0	0.0%	28	4.1%	86	12.7%	3	0.4%	415	61.5%	339	50.2%	336	49.8%	675
FRANCONIA	0	0.0%	99	21.4%	81	17.5%	0	0.0%	86	18.6%	38	8.2%	0	0.0%	159	34.3%	218	47.1%	245	52.9%	463
FREEDOM HILL	0	0.0%	158	28.8%	25	4.6%	0	0.0%	124	22.6%	34	6.2%	2	0.4%	205	37.4%	263	48.0%	285	52.0%	548
GARFIELD	0	0.0%	134	40.9%	45	13.7%	0	0.0%	47	14.3%	16	4.9%	3	0.9%	83	25.3%	168	51.2%	160	48.8%	328
GLEN FOREST	1	0.1%	124	14.9%	134	16.1%	1	0.1%	310	37.3%	35	4.2%	1	0.1%	226	27.2%	388	46.6%	444	53.4%	832
GRAHAM ROAD	0	0.0%	59	15.9%	50	13.5%	0	0.0%	236	63.8%	11	3.0%	0	0.0%	14	3.8%	188	50.8%	182	49.2%	370
GREAT FALLS	2	0.3%	67	11.4%	3	0.5%	0	0.0%	20	3.4%	38	6.4%	1	0.2%	459	77.8%	302	51.2%	288	48.8%	590
GREENBRIAR EAST	3	0.5%	193	30.8%	69	11.0%	1	0.2%	57	9.1%	66	10.5%	5	0.8%	232	37.1%	305	48.7%	321	51.3%	626
GREENBRIAR WEST	0	0.0%	385	45.2%	33	3.9%	0	0.0%	50	5.9%	64	7.5%	3	0.4%	316	37.1%	411	48.3%	440	51.7%	851
GROVETON	0	0.0%	64	10.5%	225	36.8%	1	0.2%	207	33.8%	37	6.0%	3	0.5%	75	12.3%	300	49.0%	312	51.0%	612
GUNSTON	0	0.0%	101	15.2%	143	21.6%	3	0.5%	143	21.6%	60	9.0%	0	0.0%	213	32.1%	304	45.9%	359	54.1%	663
HALLEY	0	0.0%	112	16.8%	107	16.1%	1	0.2%	105	15.8%	50	7.5%	2	0.3%	288	43.3%	321	48.3%	344	51.7%	665
HAYCOCK	2	0.3%	134	17.7%	15	2.0%	1	0.1%	30	4.0%	75	9.9%	3	0.4%	495	65.6%	371	49.1%	384	50.9%	755
HAYFIELD	0	0.0%	75	12.7%	106	17.9%	4	0.7%	49	8.3%	49	8.3%	0	0.0%	308	52.1%	287	48.6%	304	51.4%	591
HERNDON	1	0.1%	85	12.2%	82	11.7%	0	0.0%	208	29.8%	57	8.2%	0	0.0%	265	38.0%	350	50.1%	348	49.9%	698
HOLLIN MEADOWS	1	0.2%	67	11.2%	184	30.8%	2	0.3%	127	21.3%	43	7.2%	1	0.2%	172	28.8%	272	45.6%	325	54.4%	597
HUNT VALLEY	4	0.7%	101	17.8%	43	7.6%	0	0.0%	44	7.7%	30	5.3%	0	0.0%	347	61.0%	273	48.0%	296	52.0%	569
HUNTERS WOODS	3	0.3%	269	27.4%	111	11.3%	0	0.0%	52	5.3%	74	7.6%	7	0.7%	464	47.3%	472	48.2%	508	51.8%	980
HUTCHISON	0	0.0%	104	17.2%	67	11.1%	1	0.2%	306	50.6%	32	5.3%	9	1.5%	86	14.2%	288	47.6%	317	52.4%	605
HYBLA VALLEY	0	0.0%	33	4.4%	166	22.0%	0	0.0%	505	67.0%	24	3.2%	4	0.5%	22	2.9%	401	53.2%	353	46.8%	754
ISLAND CREEK	4	0.5%	102	13.4%	139	18.3%	1	0.1%	78	10.3%	78	10.3%	3	0.4%	355	46.7%	344	45.3%	416	54.7%	760
KEENE MILL	1	0.2%	134	21.8%	36	5.9%	1	0.2%	132	21.5%	59	9.6%	4	0.7%	248	40.3%	296	48.1%	319	51.9%	615
KENT GARDENS	0	0.0%	158	17.5%	24	2.7%	1	0.1%	55	6.1%	72	8.0%	1	0.1%	590	65.5%	477	52.9%	424	47.1%	901
KINGS GLEN	2	0.4%	87	17.7%	26	5.3%	1	0.2%	100	20.4%	34	6.9%	2	0.4%	239	48.7%	218	44.4%	273	55.6%	491
KINGS PARK	0	0.0%	136	19.5%	33	4.7%	1	0.1%	135	19.3%	56	8.0%	2	0.3%	335	48.0%	342	49.0%	356	51.0%	698
LAKE ANNE	2	0.3%	46	7.8%	113	19.2%	0	0.0%	138	23.4%	80	13.6%	2	0.3%	208	35.3%	290	49.2%	299	50.8%	589
LANE	2	0.3%	135	17.4%	173	22.3%	2	0.3%	102	13.1%	66	8.5%	8	1.0%	288	37.1%	383	49.4%	393	50.6%	776

FAIRFAX COUNTY PUBLIC SCHOOLS
STUDENT MEMBERSHIP BY
ETHNIC GROUP AND GENDER
SEPTEMBER 2008

	AMER INDIAN/ ALASKAN		ASIAN		BLACK		HAWAIIAN/ PACIFIC ISLANDER		HISPANIC		MULTIRACIAL		UNDESIGNATED		WHITE		FEMALE		MALE		TOTAL
	No.	Percent	No.	Percent	No.	Percent	No.	Percent	No.	Percent	No.	Percent	No.	Percent	No.	Percent	No.	Percent	No.	Percent	
LAUREL RIDGE	0	0.0%	108	12.8%	46	5.4%	0	0.0%	109	12.9%	88	10.4%	19	2.2%	477	56.3%	396	46.8%	451	53.2%	847
LEES CORNER	0	0.0%	180	26.3%	36	5.3%	0	0.0%	72	10.5%	42	6.1%	0	0.0%	354	51.8%	324	47.4%	360	52.6%	684
LEMON ROAD	0	0.0%	41	14.3%	13	4.5%	0	0.0%	65	22.7%	28	9.8%	4	1.4%	135	47.2%	131	45.8%	155	54.2%	286
LITTLE RUN	1	0.3%	63	18.3%	12	3.5%	0	0.0%	76	22.1%	26	7.6%	1	0.3%	165	48.0%	167	48.5%	177	51.5%	344
LONDON TOWNE	2	0.2%	99	11.2%	126	14.2%	1	0.1%	332	37.5%	91	10.3%	4	0.5%	230	26.0%	430	48.6%	455	51.4%	885
LORTON STATION	0	0.0%	244	22.1%	338	30.6%	1	0.1%	174	15.8%	71	6.4%	7	0.6%	268	24.3%	535	48.5%	568	51.5%	1103
LYNBROOK	0	0.0%	71	15.4%	36	7.8%	0	0.0%	308	66.7%	8	1.7%	2	0.4%	37	8.0%	223	48.3%	239	51.7%	462
MANTUA	1	0.1%	209	23.8%	27	3.1%	0	0.0%	71	8.1%	54	6.1%	1	0.1%	517	58.8%	416	47.3%	464	52.7%	880
MARSHALL ROAD	1	0.2%	130	23.0%	26	4.6%	0	0.0%	33	5.9%	37	6.6%	5	0.9%	332	58.9%	251	44.5%	313	55.5%	564
MCNAIR	0	0.0%	272	27.2%	199	19.9%	4	0.4%	324	32.4%	74	7.4%	3	0.3%	125	12.5%	498	49.8%	503	50.2%	1001
MOSBY WOODS	4	0.6%	207	29.4%	74	10.5%	0	0.0%	111	15.7%	56	7.9%	0	0.0%	253	35.9%	365	51.8%	340	48.2%	705
MT EAGLE	1	0.4%	20	7.4%	54	20.0%	0	0.0%	176	65.2%	6	2.2%	0	0.0%	13	4.8%	129	47.8%	141	52.2%	270
MT VERNON WOODS	1	0.2%	33	6.5%	173	33.9%	0	0.0%	280	54.9%	8	1.6%	2	0.4%	13	2.5%	254	49.8%	256	50.2%	510
NAVY	0	0.0%	221	26.6%	28	3.4%	0	0.0%	31	3.7%	45	5.4%	4	0.5%	501	60.4%	377	45.4%	453	54.6%	830
NEWINGTON FOREST	1	0.2%	88	13.9%	86	13.5%	1	0.2%	119	18.7%	51	8.0%	1	0.2%	288	45.4%	292	46.0%	343	54.0%	635
NORTH SPRINGFIELD	0	0.0%	128	24.2%	38	7.2%	0	0.0%	132	24.9%	50	9.4%	5	0.9%	177	33.4%	240	45.3%	290	54.7%	530
OAK HILL	1	0.1%	360	37.0%	23	2.4%	0	0.0%	40	4.1%	39	4.0%	5	0.5%	506	52.0%	450	46.2%	524	53.8%	974
OAK VIEW	2	0.3%	103	15.4%	34	5.1%	0	0.0%	38	5.7%	52	7.7%	1	0.1%	441	65.7%	332	49.5%	339	50.5%	671
OAKTON	0	0.0%	109	18.0%	16	2.6%	2	0.3%	37	6.1%	49	8.1%	0	0.0%	394	64.9%	290	47.8%	317	52.2%	607
OLDE CREEK	2	0.5%	89	22.5%	30	7.6%	0	0.0%	54	13.7%	10	2.5%	0	0.0%	210	53.2%	188	47.6%	207	52.4%	395
ORANGE HUNT	3	0.4%	59	7.1%	39	4.7%	0	0.0%	67	8.1%	51	6.2%	5	0.6%	603	72.9%	410	49.6%	417	50.4%	827
PARKLAWN	1	0.1%	81	11.4%	214	30.2%	3	0.4%	301	42.5%	20	2.8%	1	0.1%	88	12.4%	362	51.1%	347	48.9%	709
PINE SPRING	0	0.0%	109	21.0%	30	5.8%	0	0.0%	204	39.3%	42	8.1%	3	0.6%	131	25.2%	250	48.2%	269	51.8%	519
POPLAR TREE	6	0.8%	156	20.7%	27	3.6%	0	0.0%	96	12.7%	72	9.5%	1	0.1%	397	52.6%	371	49.1%	384	50.9%	755
POWELL	0	0.0%	502	51.8%	66	6.8%	0	0.0%	58	6.0%	52	5.4%	3	0.3%	289	29.8%	460	47.4%	510	52.6%	970
PROVIDENCE	1	0.1%	159	18.3%	47	5.4%	1	0.1%	246	28.3%	62	7.1%	0	0.0%	353	40.6%	414	47.6%	455	52.4%	869
RAVENSWORTH	1	0.2%	84	15.7%	19	3.6%	0	0.0%	95	17.8%	58	10.9%	0	0.0%	277	51.9%	250	46.8%	284	53.2%	534
RIVERSIDE	1	0.2%	35	5.6%	244	39.2%	0	0.0%	213	34.2%	32	5.1%	2	0.3%	95	15.3%	314	50.5%	308	49.5%	622
ROLLING VALLEY	1	0.2%	121	23.9%	65	12.8%	1	0.2%	57	11.3%	43	8.5%	1	0.2%	217	42.9%	249	49.2%	257	50.8%	506
ROSE HILL	2	0.3%	77	9.7%	88	11.1%	0	0.0%	347	43.8%	66	8.3%	1	0.1%	212	26.7%	405	51.1%	388	48.9%	793
SANGSTER	1	0.1%	96	12.5%	32	4.2%	0	0.0%	29	3.8%	62	8.1%	5	0.7%	544	70.7%	360	46.8%	409	53.2%	769
SARATOGA	0	0.0%	138	18.3%	147	19.4%	0	0.0%	129	17.1%	65	8.6%	3	0.4%	274	36.2%	362	47.9%	394	52.1%	756
SHERMAN	0	0.0%	73	20.6%	4	1.1%	0	0.0%	15	4.2%	24	6.8%	0	0.0%	239	67.3%	166	46.8%	189	53.2%	355
SHREVEWOOD	0	0.0%	135	26.6%	45	8.9%	0	0.0%	99	19.5%	37	7.3%	2	0.4%	190	37.4%	245	48.2%	263	51.8%	508
SILVERBROOK	5	0.4%	228	19.6%	143	12.3%	1	0.1%	40	3.4%	73	6.3%	59	5.1%	617	52.9%	591	50.7%	575	49.3%	1166
SLEEPY HOLLOW	0	0.0%	32	8.4%	13	3.4%	0	0.0%	151	39.6%	25	6.6%	1	0.3%	159	41.7%	175	45.9%	206	54.1%	381
SPRING HILL	1	0.1%	239	25.9%	12	1.3%	0	0.0%	35	3.8%	49	5.3%	0	0.0%	587	63.6%	450	48.8%	473	51.2%	923
SPRINGFIELD ESTATES	2	0.3%	163	25.8%	73	11.5%	2	0.3%	134	21.2%	38	6.0%	16	2.5%	205	32.4%	306	48.3%	327	51.7%	633

FAIRFAX COUNTY PUBLIC SCHOOLS
STUDENT MEMBERSHIP BY
ETHNIC GROUP AND GENDER
SEPTEMBER 2008

	AMER INDIAN/ ALASKAN		ASIAN		BLACK		HAWAIIAN/ PACIFIC ISLANDER		HISPANIC		MULTIRACIAL		UNDESIGNATED		WHITE		FEMALE		MALE		TOTAL
	No.	Percent	No.	Percent	No.	Percent	No.	Percent	No.	Percent	No.	Percent	No.	Percent	No.	Percent	No.	Percent	No.	Percent	
STENWOOD	2	0.4%	87	18.7%	14	3.0%	1	0.2%	27	5.8%	32	6.9%	2	0.4%	301	64.6%	234	50.2%	232	49.8%	466
STRATFORD LANDING	1	0.1%	36	4.9%	80	11.0%	0	0.0%	43	5.9%	44	6.0%	23	3.2%	503	68.9%	340	46.6%	390	53.4%	730
SUNRISE VALLEY	1	0.2%	122	19.4%	26	4.1%	0	0.0%	26	4.1%	52	8.3%	3	0.5%	400	63.5%	304	48.3%	326	51.7%	630
TERRA-CENTRE	4	0.7%	62	10.2%	50	8.2%	0	0.0%	88	14.5%	61	10.0%	7	1.2%	335	55.2%	273	45.0%	334	55.0%	607
TERRASET	0	0.0%	27	6.7%	81	20.2%	0	0.0%	110	27.4%	25	6.2%	5	1.2%	153	38.2%	189	47.1%	212	52.9%	401
TIMBER LANE	0	0.0%	93	18.4%	51	10.1%	0	0.0%	224	44.4%	32	6.3%	3	0.6%	102	20.2%	234	46.3%	271	53.7%	505
UNION MILL	1	0.1%	116	14.5%	19	2.4%	1	0.1%	34	4.2%	46	5.7%	5	0.6%	580	72.3%	391	48.8%	411	51.2%	802
VIENNA	1	0.2%	60	14.6%	14	3.4%	0	0.0%	25	6.1%	35	8.5%	12	2.9%	263	64.1%	204	49.8%	206	50.2%	410
VIRGINIA RUN	1	0.1%	75	9.7%	20	2.6%	0	0.0%	41	5.3%	54	7.0%	4	0.5%	576	74.7%	381	49.4%	390	50.6%	771
WAKEFIELD FOREST	0	0.0%	58	12.2%	8	1.7%	1	0.2%	25	5.3%	53	11.2%	1	0.2%	329	69.3%	235	49.5%	240	50.5%	475
WAPLES MILL	6	0.7%	155	19.1%	30	3.7%	2	0.2%	47	5.8%	50	6.2%	5	0.6%	517	63.7%	368	45.3%	444	54.7%	812
WASHINGTON MILL	0	0.0%	54	9.7%	162	29.2%	4	0.7%	138	24.9%	36	6.5%	1	0.2%	160	28.8%	254	45.8%	301	54.2%	555
WAYNEWOOD	0	0.0%	10	1.5%	3	0.5%	1	0.2%	15	2.3%	36	5.6%	2	0.3%	580	89.6%	308	47.6%	339	52.4%	647
WEST SPRINGFIELD	0	0.0%	54	11.5%	34	7.2%	0	0.0%	38	8.1%	37	7.9%	1	0.2%	306	65.1%	225	47.9%	245	52.1%	470
WESTBRIAR	0	0.0%	95	19.5%	14	2.9%	1	0.2%	28	5.7%	25	5.1%	2	0.4%	322	66.1%	237	48.7%	250	51.3%	487
WESTGATE	0	0.0%	103	28.5%	37	10.2%	1	0.3%	88	24.3%	17	4.7%	1	0.3%	115	31.8%	170	47.0%	192	53.0%	362
WESTLAWN	0	0.0%	153	23.5%	16	2.5%	0	0.0%	349	53.5%	35	5.4%	9	1.4%	90	13.8%	299	45.9%	353	54.1%	652
WEYANOKE	0	0.0%	133	24.0%	159	28.7%	0	0.0%	189	34.1%	22	4.0%	3	0.5%	48	8.7%	244	44.0%	310	56.0%	554
WHITE OAKS	2	0.3%	166	21.8%	52	6.8%	0	0.0%	114	15.0%	73	9.6%	3	0.4%	351	46.1%	367	48.2%	394	51.8%	761
WILLOW SPRINGS	1	0.2%	175	26.7%	21	3.2%	1	0.2%	28	4.3%	39	6.0%	1	0.2%	389	59.4%	310	47.3%	345	52.7%	655
WOLFTRAP	0	0.0%	42	7.4%	4	0.7%	0	0.0%	11	1.9%	33	5.8%	0	0.0%	480	84.2%	295	51.8%	275	48.2%	570
WOODBURN	0	0.0%	142	29.1%	59	12.1%	0	0.0%	114	23.4%	36	7.4%	1	0.2%	136	27.9%	233	47.7%	255	52.3%	488
WOODLAWN	1	0.2%	33	7.3%	153	33.9%	3	0.7%	177	39.2%	28	6.2%	0	0.0%	56	12.4%	219	48.6%	232	51.4%	451
WOODLEY HILLS	0	0.0%	23	3.7%	146	23.3%	0	0.0%	277	44.2%	36	5.7%	1	0.2%	144	23.0%	311	49.6%	316	50.4%	627
ELEM TOTALS	137	0.2%	16,319	18.6%	9,046	10.3%	107	0.1%	16,552	18.9%	6,285	7.2%	465	0.5%	38,737	44.2%	42,228	48.2%	45,420	51.8%	87,648

FAIRFAX COUNTY PUBLIC SCHOOLS
STUDENT MEMBERSHIP BY
ETHNIC GROUP AND GENDER
SEPTEMBER 2008

	AMER INDIAN/ ALASKAN		ASIAN		BLACK		HAWAIIAN/ PACIFIC ISLANDER		HISPANIC		MULTIRACIAL		UNDESIGNATED		WHITE		FEMALE		MALE		TOTAL
	No.	Percent	No.	Percent	No.	Percent	No.	Percent	No.	Percent	No.	Percent	No.	Percent	No.	Percent	No.	Percent	No.	Percent	
CARSON	2	0.2%	367	29.9%	84	6.8%	0	0.0%	59	4.8%	76	6.2%	2	0.2%	637	51.9%	577	47.0%	650	53.0%	1227
COOPER	4	0.5%	132	15.4%	11	1.3%	0	0.0%	21	2.4%	46	5.4%	0	0.0%	645	75.1%	415	48.3%	444	51.7%	859
FRANKLIN	4	0.4%	179	19.3%	42	4.5%	0	0.0%	70	7.6%	50	5.4%	1	0.1%	580	62.6%	473	51.1%	453	48.9%	926
FROST	3	0.3%	229	21.4%	39	3.6%	0	0.0%	54	5.0%	50	4.7%	0	0.0%	696	65.0%	511	47.7%	560	52.3%	1071
GLASGOW	2	0.2%	179	16.2%	133	12.0%	0	0.0%	458	41.4%	36	3.3%	8	0.7%	290	26.2%	554	50.1%	552	49.9%	1106
HAYFIELD	2	0.2%	102	10.8%	256	27.1%	1	0.1%	177	18.7%	71	7.5%	5	0.5%	331	35.0%	452	47.8%	493	52.2%	945
HERNDON	3	0.3%	141	13.6%	95	9.1%	0	0.0%	261	25.1%	49	4.7%	3	0.3%	487	46.9%	501	48.2%	538	51.8%	1039
HOLMES	3	0.4%	149	19.3%	147	19.1%	1	0.1%	264	34.2%	35	4.5%	2	0.3%	170	22.0%	371	48.1%	400	51.9%	771
HUGHES	2	0.2%	119	12.9%	167	18.1%	0	0.0%	182	19.7%	57	6.2%	3	0.3%	393	42.6%	443	48.0%	480	52.0%	923
IRVING	2	0.2%	156	14.8%	66	6.3%	0	0.0%	113	10.7%	63	6.0%	3	0.3%	653	61.8%	513	48.6%	543	51.4%	1056
JACKSON	1	0.1%	236	23.9%	87	8.8%	0	0.0%	323	32.7%	42	4.2%	1	0.1%	299	30.2%	481	48.6%	508	51.4%	989
KEY	2	0.2%	205	24.4%	137	16.3%	0	0.0%	250	29.8%	28	3.3%	1	0.1%	217	25.8%	414	49.3%	426	50.7%	840
KILMER	2	0.2%	224	21.4%	49	4.7%	2	0.2%	108	10.3%	62	5.9%	8	0.8%	591	56.5%	492	47.0%	554	53.0%	1046
LAKE BRADDOCK	4	0.3%	244	19.0%	72	5.6%	0	0.0%	187	14.6%	71	5.5%	1	0.1%	705	54.9%	651	50.7%	633	49.3%	1284
LANIER	1	0.1%	260	25.1%	103	9.9%	1	0.1%	180	17.4%	56	5.4%	1	0.1%	434	41.9%	540	52.1%	496	47.9%	1036
LIBERTY	3	0.3%	305	26.8%	121	10.6%	1	0.1%	151	13.3%	48	4.2%	2	0.2%	506	44.5%	563	49.5%	574	50.5%	1137
LONGFELLOW	4	0.3%	242	20.8%	28	2.4%	2	0.2%	83	7.1%	67	5.7%	2	0.2%	738	63.3%	564	48.4%	602	51.6%	1166
POE	3	0.2%	287	23.3%	126	10.2%	0	0.0%	474	38.4%	47	3.8%	5	0.4%	292	23.7%	614	49.8%	620	50.2%	1234
ROBINSON	4	0.3%	212	16.9%	67	5.3%	1	0.1%	135	10.8%	78	6.2%	3	0.2%	755	60.2%	604	48.1%	651	51.9%	1255
ROCKY RUN	6	0.7%	238	27.1%	38	4.3%	3	0.3%	72	8.2%	44	5.0%	1	0.1%	477	54.3%	413	47.0%	466	53.0%	879
SANDBURG	5	0.4%	71	6.1%	266	22.9%	0	0.0%	269	23.1%	59	5.1%	2	0.2%	492	42.3%	575	49.4%	589	50.6%	1164
SOUTH COUNTY	2	0.2%	136	15.6%	136	15.6%	0	0.0%	91	10.5%	52	6.0%	4	0.5%	449	51.6%	418	48.0%	452	52.0%	870
STONE	3	0.3%	139	14.7%	68	7.2%	0	0.0%	124	13.1%	54	5.7%	2	0.2%	553	58.6%	463	49.1%	480	50.9%	943
THOREAU	2	0.2%	118	14.7%	21	2.6%	0	0.0%	53	6.6%	50	6.2%	5	0.6%	555	69.0%	370	46.0%	434	54.0%	804
TWAIN	5	0.6%	125	15.1%	136	16.4%	0	0.0%	217	26.2%	53	6.4%	1	0.1%	292	35.2%	373	45.0%	456	55.0%	829
WHITMAN	4	0.4%	48	5.0%	293	30.3%	4	0.4%	287	29.7%	67	6.9%	0	0.0%	264	27.3%	460	47.6%	507	52.4%	967
MIDDLE TOTALS	78	0.3%	4,843	18.4%	2,788	10.6%	16	0.1%	4,663	17.7%	1,411	5.4%	66	0.3%	12,501	47.4%	12,805	48.6%	13,561	51.4%	26,366

FAIRFAX COUNTY PUBLIC SCHOOLS
STUDENT MEMBERSHIP BY
ETHNIC GROUP AND GENDER
SEPTEMBER 2008

	AMER INDIAN/ ALASKAN		ASIAN		BLACK		HAWAIIAN/ PACIFIC ISLANDER		HISPANIC		MULTIRACIAL		UNDESIGNATED		WHITE		FEMALE		MALE		TOTAL
	No.	Percent	No.	Percent	No.	Percent	No.	Percent	No.	Percent	No.	Percent	No.	Percent	No.	Percent	No.	Percent	No.	Percent	
ANNANDALE	7	0.3%	562	21.9%	396	15.4%	5	0.2%	788	30.7%	79	3.1%	5	0.2%	723	28.2%	1227	47.8%	1338	52.2%	2565
CENTREVILLE	8	0.4%	669	29.8%	209	9.3%	0	0.0%	240	10.7%	89	4.0%	2	0.1%	1031	45.9%	1105	49.2%	1143	50.8%	2248
CHANTILLY	16	0.6%	606	21.8%	157	5.7%	1	0.0%	248	8.9%	93	3.4%	5	0.2%	1650	59.4%	1339	48.2%	1437	51.8%	2776
EDISON	5	0.3%	237	13.3%	361	20.3%	1	0.1%	468	26.3%	97	5.4%	3	0.2%	609	34.2%	881	49.5%	900	50.5%	1781
FAIRFAX	4	0.2%	537	24.2%	196	8.8%	1	0.0%	331	14.9%	108	4.9%	1	0.0%	1044	47.0%	1086	48.9%	1136	51.1%	2222
FALLS CHURCH	2	0.1%	319	23.0%	107	7.7%	0	0.0%	518	37.3%	48	3.5%	2	0.1%	391	28.2%	651	46.9%	736	53.1%	1387
HAYFIELD	5	0.3%	246	13.9%	443	25.1%	3	0.2%	274	15.5%	101	5.7%	19	1.1%	676	38.3%	890	50.4%	877	49.6%	1767
HERNDON	7	0.3%	277	12.7%	204	9.4%	1	0.0%	456	20.9%	82	3.8%	3	0.1%	1150	52.8%	982	45.0%	1198	55.0%	2180
JEFFERSON SCI/TECH	6	0.3%	750	41.3%	33	1.8%	3	0.2%	50	2.8%	103	5.7%	8	0.4%	862	47.5%	836	46.1%	979	53.9%	1815
LAKE BRADDOCK	11	0.4%	480	19.1%	158	6.3%	0	0.0%	361	14.4%	121	4.8%	3	0.1%	1381	54.9%	1246	49.5%	1269	50.5%	2515
LANGLEY	4	0.2%	359	17.1%	39	1.9%	0	0.0%	61	2.9%	82	3.9%	3	0.1%	1548	73.9%	974	46.5%	1122	53.5%	2096
LEE	7	0.4%	471	26.3%	276	15.4%	2	0.1%	481	26.8%	55	3.1%	2	0.1%	500	27.9%	847	47.2%	947	52.8%	1794
MADISON	10	0.5%	224	11.7%	62	3.2%	2	0.1%	130	6.8%	88	4.6%	5	0.3%	1398	72.9%	955	49.8%	964	50.2%	1919
MARSHALL	3	0.2%	287	20.7%	92	6.6%	0	0.0%	193	13.9%	59	4.3%	0	0.0%	750	54.2%	682	49.3%	702	50.7%	1384
MCLEAN	9	0.5%	331	18.8%	65	3.7%	3	0.2%	164	9.3%	78	4.4%	0	0.0%	1110	63.1%	827	47.0%	933	53.0%	1760
MOUNT VERNON	3	0.2%	107	5.9%	638	35.2%	3	0.2%	456	25.2%	96	5.3%	6	0.3%	504	27.8%	867	47.8%	946	52.2%	1813
OAKTON	5	0.2%	464	19.8%	112	4.8%	1	0.0%	164	7.0%	105	4.5%	3	0.1%	1494	63.6%	1113	47.4%	1235	52.6%	2348
ROBINSON	10	0.4%	480	17.6%	142	5.2%	1	0.0%	304	11.1%	128	4.7%	5	0.2%	1657	60.8%	1336	49.0%	1391	51.0%	2727
SOUTH COUNTY	8	0.4%	359	17.3%	319	15.4%	1	0.0%	195	9.4%	103	5.0%	6	0.3%	1084	52.2%	1024	49.3%	1051	50.7%	2075
SOUTH LAKES	5	0.3%	179	11.0%	312	19.1%	1	0.1%	286	17.5%	102	6.2%	4	0.2%	744	45.6%	771	47.2%	862	52.8%	1633
STUART	3	0.2%	287	17.8%	159	9.9%	1	0.1%	680	42.1%	47	2.9%	7	0.4%	430	26.6%	800	49.6%	814	50.4%	1614
WEST POTOMAC	9	0.4%	167	8.1%	485	23.4%	2	0.1%	432	20.9%	94	4.5%	0	0.0%	881	42.6%	1070	51.7%	1000	48.3%	2070
WEST SPRINGFIELD	7	0.3%	348	15.3%	174	7.6%	2	0.1%	258	11.3%	119	5.2%	2	0.1%	1371	60.1%	1110	48.7%	1171	51.3%	2281
WESTFIELD	9	0.3%	550	18.7%	235	8.0%	2	0.1%	328	11.2%	138	4.7%	4	0.1%	1669	56.9%	1416	48.2%	1519	51.8%	2935
WOODSON	6	0.3%	461	22.0%	69	3.3%	2	0.1%	143	6.8%	101	4.8%	3	0.1%	1311	62.5%	1004	47.9%	1092	52.1%	2096
HIGH TOTALS	169	0.3%	9,757	18.8%	5,443	10.5%	38	0.1%	8,009	15.5%	2,316	4.5%	101	0.2%	25,968	50.1%	25,039	48.3%	26,762	51.7%	51,801

FAIRFAX COUNTY PUBLIC SCHOOLS
STUDENT MEMBERSHIP BY
ETHNIC GROUP AND GENDER
SPECIAL EDUCATION CENTERS
SEPTEMBER 2008

	AMER INDIAN/ ALASKAN		ASIAN		BLACK		HAWAIIAN/ PACIFIC ISLANDER		HISPANIC		MULTIRACIAL		UNDESIGNATED		WHITE		FEMALE		MALE		TOTAL
	No.	Percent	No.	Percent	No.	Percent	No.	Percent	No.	Percent	No.	Percent	No.	Percent	No.	Percent	No.	Percent	No.	Percent	
CAMELOT	0	0.0%	14	21.9%	3	4.7%	0	0.0%	13	20.3%	5	7.8%	0	0.0%	29	45.3%	33	51.6%	31	48.4%	64
ELEM TOTALS	0		14	21.9%	3	4.7%	0	0.0%	13	20.3%	5	7.8%	0	0.0%	29	45.3%	33	51.6%	31	48.4%	64
BURKE	0	0.0%	4	4.8%	27	32.1%	0	0.0%	21	25.0%	4	4.8%	0	0.0%	28	33.3%	12	14.3%	72	85.7%	84
KEY	0	0.0%	17	14.9%	21	18.4%	0	0.0%	27	23.7%	7	6.1%	1	0.9%	41	36.0%	35	30.7%	79	69.3%	114
KILMER	0	0.0%	20	26.0%	7	9.1%	0	0.0%	15	19.5%	2	2.6%	0	0.0%	33	42.9%	31	40.3%	46	59.7%	77
MIDDLE TOTALS	0	0.0%	41	14.9%	55	20.0%	0	0.0%	63	22.9%	13	4.7%	1	0.4%	102	37.1%	78	28.4%	197	71.6%	275
CEDAR LANE	1	1.5%	2	3.1%	18	27.7%	0	0.0%	11	16.9%	4	6.2%	0	0.0%	29	44.6%	16	24.6%	49	75.4%	65
DAVIS	0	0.0%	20	14.8%	14	10.4%	0	0.0%	13	9.6%	2	1.5%	0	0.0%	86	63.7%	46	34.1%	89	65.9%	135
PULLEY	1	0.9%	12	11.0%	24	22.0%	0	0.0%	26	23.9%	3	2.8%	0	0.0%	43	39.4%	40	36.7%	69	63.3%	109
QUANDER ROAD	0	0.0%	6	7.5%	20	25.0%	0	0.0%	9	11.3%	7	8.8%	1	1.3%	37	46.3%	30	37.5%	50	62.5%	80
HIGH TOTALS	2	0.5%	40	10.3%	76	19.5%	0	0.0%	59	15.2%	16	4.1%	1	0.3%	195	50.1%	132	33.9%	257	66.1%	389
SPEC ED TOTALS	2	0.3%	95	13.0%	134	18.4%	0	0.0%	135	18.5%	34	4.7%	2	0.3%	326	44.8%	243	33.4%	485	66.6%	728

FAIRFAX COUNTY PUBLIC SCHOOLS
STUDENT MEMBERSHIP BY
ETHNIC GROUP AND GENDER
ALTERNATIVE EDUCATION
SEPTEMBER 2008

	AMER INDIAN/ ALASKAN		ASIAN		BLACK		HAWAIIAN/ PACIFIC ISLANDER		HISPANIC		MULTIRACIAL		UNDESIGNATED		WHITE		FEMALE		MALE		TOTAL
	No.	Percent	No.	Percent	No.	Percent	No.	Percent	No.	Percent	No.	Percent	No.	Percent	No.	Percent	No.	Percent	No.	Percent	
ALC AT MONTROSE	0	0.0%	2	6.7%	7	23.3%	0	0.0%	15	50.0%	1	3.3%	0	0.0%	5	16.7%	3	10.0%	27	90.0%	30
MIDDLE TOTALS	0	0.0%	2	6.7%	7	23.3%	0	0.0%	15	50.0%	1	3.3%	0	0.0%	5	16.7%	3	10.0%	27	90.0%	30
AIM	0	0.0%	6	10.2%	22	37.3%	0	0.0%	23	39.0%	1	1.7%	0	0.0%	7	11.9%	8	13.6%	51	86.4%	59
ALC AT BRYANT	0	0.0%	2	4.0%	24	48.0%	0	0.0%	16	32.0%	1	2.0%	0	0.0%	7	14.0%	8	16.0%	42	84.0%	50
ALC AT DUNN LORING	0	0.0%	2	7.1%	11	39.3%	0	0.0%	10	35.7%	0	0.0%	0	0.0%	5	17.9%	6	21.4%	22	78.6%	28
ALC AT MOUNTAIN VIEW	0	0.0%	0	0.0%	5	50.0%	0	0.0%	2	20.0%	1	10.0%	0	0.0%	2	20.0%	3	30.0%	7	70.0%	10
ANNANDALE TRANS ESOL	0	0.0%	8	10.3%	10	12.8%	0	0.0%	60	76.9%	0	0.0%	0	0.0%	0	0.0%	47	60.3%	31	39.7%	78
BRYANT ALTERNATIVE	0	0.0%	21	7.2%	69	23.6%	0	0.0%	160	54.8%	8	2.7%	0	0.0%	34	11.6%	175	59.9%	117	40.1%	292
FALLS CHURCH TRANS ESOL	0	0.0%	3	2.3%	1	0.8%	0	0.0%	125	94.0%	0	0.0%	0	0.0%	4	3.0%	58	43.6%	75	56.4%	133
INTERAGENCY ALT SEC	2	0.5%	29	7.8%	77	20.6%	0	0.0%	116	31.1%	19	5.1%	1	0.3%	129	34.6%	122	32.7%	251	67.3%	373
LANDMARK CAREER	0	0.0%	1	4.8%	7	33.3%	0	0.0%	2	9.5%	1	4.8%	0	0.0%	10	47.6%	10	47.6%	11	52.4%	21
LEE TRANS ESOL	0	0.0%	11	7.8%	6	4.3%	0	0.0%	119	84.4%	2	1.4%	0	0.0%	3	2.1%	61	43.3%	80	56.7%	141
MOUNTAIN VIEW	0	0.0%	28	11.2%	28	11.2%	0	0.0%	104	41.8%	8	3.2%	0	0.0%	81	32.5%	92	36.9%	157	63.1%	249
PIMMIT ALTERNATIVE	0	0.0%	40	16.1%	43	17.3%	0	0.0%	139	55.8%	3	1.2%	0	0.0%	24	9.6%	102	41.0%	147	59.0%	249
SOUTH LAKES TRANS ESOL	0	0.0%	2	1.5%	9	6.7%	0	0.0%	119	88.1%	0	0.0%	0	0.0%	5	3.7%	66	48.9%	69	51.1%	135
WOODSON ADULT ED	2	0.6%	55	15.7%	57	16.2%	0	0.0%	180	51.3%	7	2.0%	1	0.3%	49	14.0%	162	46.2%	189	53.8%	351
HIGH TOTALS	4	0.2%	208	9.6%	369	17.0%	0	0.0%	1175	54.2%	51	2.4%	2	0.1%	360	16.6%	920	42.4%	1249	57.6%	2169
ALT ED TOTALS	4	0.2%	210	9.5%	376	17.1%	0	0.0%	1,190	54.1%	52	2.4%	2	0.1%	365	16.6%	923	42.0%	1,276	58.0%	2,199