



STATISTICAL REPORT

FAIRFAX COUNTY PUBLIC SCHOOLS  FAIRFAX, VIRGINIA

REPORT OF STUDENT MEMBERSHIP BY ETHNIC GROUP AND GENDER September 28, 2007

Purpose

This report has been prepared as an annual review of student ethnic groups for the 2007-2008 school year. It provides management information for Fairfax County Public Schools.

Contents

Page

Preface:

Introduction.....	2
2007 – 2008 Student Ethnic and Gender Membership.....	3
1987 to 2007 Ethnic Membership at Five-Year Intervals.....	4
2003 to 2007 Change in Minority Membership.....	6
1987 and 2007 Change in Minority Membership.....	7

List of Data Tables:

Elementary School Membership by Ethnic Group and Gender.....	8
Middle School Membership by Ethnic Group and Gender.....	12
High School Membership by Ethnic Group and Gender.....	13
Special Education Centers Membership by Ethnic Group and Gender.....	14
Alternative Education by Ethnic Group and Gender.....	15

Date of Publication:
November 2007

INTRODUCTION

The Report of Student Membership by Ethnic Group and Gender is based on student membership data as of September 28, 2007. Ethnic student data are collected from the parents/guardians at the time of initial Fairfax County Public School (FCPS) registration. No student is counted in more than one category.

FCPS uses the ethnic classifications established by the United States Department of Education pursuant to Title VI of the Civil Rights Act of 1964, Title IX of the Education Amendments of 1972, and under section 504 of the Rehabilitation Act of 1973. These classifications include the categories American Indian or Alaskan Native, Asian or Pacific Islander, Hispanic, Black, and White. A local code titled "Undesignated" is used when the parent/guardian of a student refuses to identify the student with one of the five federal classifications. Beginning with the 1994-95 school year, FCPS added "Multiracial" to the list of ethnic classifications. The term Multiracial is defined as "persons whose parents have origins in two or more racial or ethnic groups." Beginning with the 2003-04 school year, the Virginia Department of Education and FCPS added "Hawaiian" to the list of ethnic classifications.

For local reporting purposes, there are eight ethnic classifications: the six classifications prescribed for federal and state reporting, Undesignated, and Multiracial. The term minorities includes the categories American Indian or Alaskan Native, Asian or Pacific Islander, Hawaiian, Hispanic, Black, and Multiracial.

Membership is reported by elementary, middle and high schools, special education centers, and alternative education schools and centers.

- As of September 28, 2007, Fairfax County Public School student membership was 165,439. Table I displays the number and percentage of students in each ethnic and gender category and level.

TABLE I
2007 - 2008 STUDENT ETHNIC AND GENDER MEMBERSHIP

	Amer. Indian/Alaskan		Asian/Pacific Islander		Black		Hawaiian		Hispanic		Multiracial		Undesignated		White		Female		Male		Total
	No.	%	No.	%	No.	%	No.	%	No.	%	No.	%	No.	%	No.	%	No.	%	No.	%	No.
Elementary	171	0.2%	15,661	18.3%	8,890	10.4%	76	0.1%	15,365	18.0%	5,899	6.9%	393	0.5%	39,131	45.7%	41,245	48.2%	44,341	51.8%	85,586
Middle	83	0.3%	4,610	17.8%	2,831	10.9%	16	0.1%	4,309	16.6%	1,315	5.1%	61	0.2%	12,663	48.9%	12,416	48.0%	13,472	52.0%	25,888
High	154	0.3%	9,636	18.8%	5,365	10.5%	30	0.1%	7,386	14.4%	2,116	4.1%	103	0.2%	26,357	51.5%	24,877	48.6%	26,270	51.4%	51,147
Special Ed. Centers	2	0.3%	81	11.6%	143	20.4%	0	0.0%	108	15.4%	26	3.7%	4	0.6%	336	48.0%	235	33.6%	465	66.4%	700
Alternative Education	4	0.2%	244	11.5%	385	18.2%	1	0.0%	1,083	51.1%	47	2.2%	2	0.1%	352	16.6%	905	42.7%	1,213	57.3%	2,118
County Totals	414	0.3%	30,232	18.3%	17,614	10.6%	123	0.1%	28,251	17.1%	9,403	5.7%	563	0.3%	78,839	47.7%	79,678	48.2%	85,761	51.8%	165,439

- Table II displays the number and percentage of students in each ethnic category for the past twenty-one year period using five-year intervals. Please refer to Figure 1 for a graphical representation of this data and Table IV for the percentage change for each ethnic group.

TABLE II

1987 TO 2007 ETHNIC MEMBERSHIP AT FIVE-YEAR INTERVALS

	Amer. Indian/ Alaskan		Asian/Pacific Islander		Black		Hawaiian		Hispanic		Multiracial		Undesignated		White		Total
1987-1988	256	0.2%	12,411	9.6%	11,566	9.0%	-	-	5,460	4.2%	-	-	65	0.1%	98,890	76.9%	128,648
1992-1993	351	0.3%	16,908	12.5%	14,084	10.5%	-	-	10,477	7.8%	-	-	152	0.1%	92,764	68.8%	134,736
1997-1998	422	0.3%	20,616	14.0%	16,776	11.4%	-	-	15,254	10.4%	2,310	1.6%	264	0.2%	91,608	62.2%	147,250
2002-2003	600	0.4%	27,010	16.6%	17,152	10.5%	-	-	23,812	14.6%	5,708	3.5%	306	0.2%	87,997	54.1%	162,585
2007-2008	414	0.3%	30,232	18.3%	17,614	10.6%	123	0.1%	28,251	17.1%	9,403	5.7%	563	0.3%	78,839	47.7%	165,439

FIGURE I
FCPS 1987-2007 ETHNIC DISTRIBUTION AT FIVE-YEAR INTERVALS

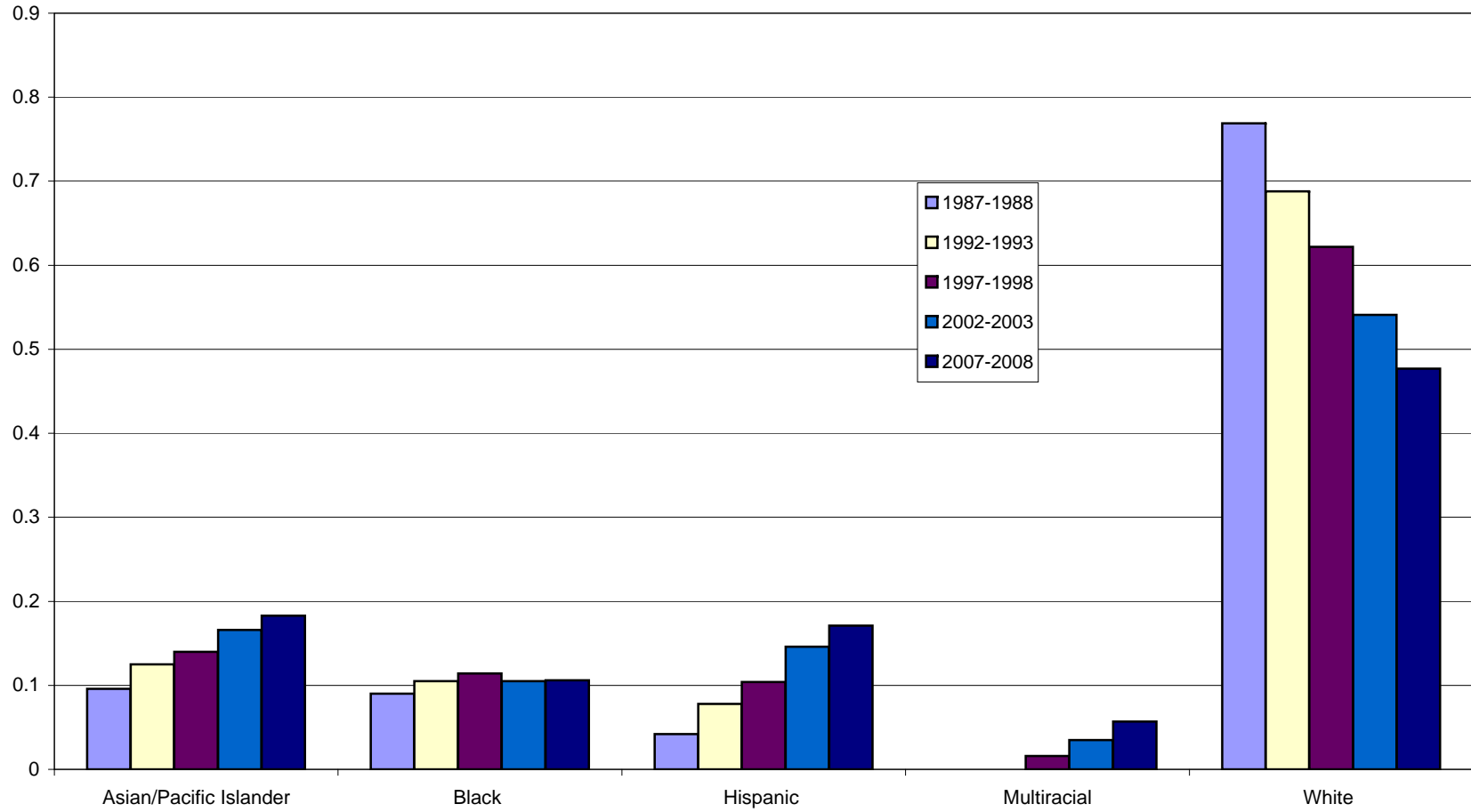


TABLE III
2003 TO 2007 CHANGE IN MINORITY MEMBERSHIP

	Amer. Indian/ Alaskan			Asian/Pacific Islander			Black			Hawaiian			Hispanic			Multiracial			Minority			Total No.
	No.	%	One-Yr. Change	No.	%	One-Yr. Change	No.	%	One-Yr. Change	No.	%	One-Yr. Change	No.	%	One-Yr. Change	No.	%	One-Yr. Change	No.	%	One-Yr. Change	
2003-04	594	0.4%		27,561	16.9%		17,460	10.7%		1	0.0%		24,720	15.1%		6,583	4.0%		76,919	47.1%		163,399
			-5.2%			2.5%			0.1%			200.0%			2.9%			11.7%			2.8%	
2004-05	563	0.3%		28,252	17.2%		17,480	10.7%		3	0.0%		25,441	15.5%		7,355	4.5%		79,094	48.3%		163,830
			-13.1%			0.9%			0.7%			1766.7%			2.9%			9.7%			2.3%	
2005-06	489	0.3%		28,516	17.4%		17,603	10.8%		56	0.0%		26,169	16.0%		8,069	4.9%		80,902	49.5%		163,534
			-4.7%			2.2%			-0.7%			50.0%			2.3%			8.4%			2.2%	
2006-07	466	0.3%		29,138	17.8%		17,483	10.7%		84	0.1%		26,761	16.4%		8,747	5.3%		82,679	50.5%		163,593
			-11.2%			3.8%			0.7%			46.4%			5.6%			7.5%			4.1%	
2007-08	414	0.3%		30,232	18.3%		17,614	10.6%		123	0.1%		28,251	17.1%		9,403	5.7%		86,037			165,439

- Table IV displays an increase in minority membership from 29,693 in 1987 to 86,037 in September 2007. This is a 28.9 percentage point increase in FCPS minority membership over the past twenty-one year period.

TABLE IV

1987 AND 2007 CHANGE IN MINORITY MEMBERSHIP

	Amer. Indian/ Alaskan		Asian/Pacific Islander		Black		Hawaiian		Hispanic		Multiracial		Minority		Total
	No.	%	No.	%	No.	%	No.	%	No.	%	No.	%	No.	%	No.
1987-88	256	0.2%	12,411	9.6%	11,566	9.0%	-	-	5,460	4.2%	-	-	29,693	23.1%	128,648
2007-08	414	0.3%	30,232	18.3%	17,614	10.6%	123	0.1%	28,251	17.1%	9,403	5.7%	86,037	52.0%	165,439
Change in Percentage Points		0.1		8.7		1.6		0.1		12.9		5.7		28.9	

FAIRFAX COUNTY PUBLIC SCHOOLS
STUDENT MEMBERSHIP BY
ETHNIC GROUP AND GENDER
SEPTEMBER 2007

	AMER INDIAN/ ALASKAN		ASIAN/PACIFIC ISLANDER		BLACK		HAWAIIAN		HISPANIC		MULTIRACIAL		UNDESIGNATED		WHITE		FEMALE		MALE		TOTAL
	No.	Percent	No.	Percent	No.	Percent	No.	Percent	No.	Percent	No.	Percent	No.	Percent	No.	Percent	No.	Percent	No.	Percent	
Aldrin	0	0.0%	116	21.1%	49	8.9%	0	0.0%	39	7.1%	48	8.7%	13	2.4%	285	51.8%	285	51.8%	265	48.2%	550
Annandale Terrace	1	0.1%	168	25.0%	95	14.1%	0	0.0%	314	46.7%	21	3.1%	0	0.0%	74	11.0%	339	50.4%	334	49.6%	673
Archer	3	0.4%	150	21.5%	18	2.6%	0	0.0%	28	4.0%	42	6.0%	13	1.9%	445	63.7%	338	48.4%	361	51.6%	699
Armstrong	1	0.2%	54	11.7%	21	4.6%	0	0.0%	30	6.5%	33	7.2%	0	0.0%	321	69.8%	210	45.7%	250	54.3%	460
Baileys	0	0.0%	124	14.4%	49	5.7%	1	0.1%	383	44.5%	66	7.7%	1	0.1%	236	27.4%	433	50.3%	427	49.7%	860
Beech Tree	1	0.2%	106	23.3%	32	7.0%	0	0.0%	187	41.2%	26	5.7%	1	0.2%	101	22.2%	235	51.8%	219	48.2%	454
Belle View	1	0.2%	28	6.5%	56	12.9%	0	0.0%	102	23.5%	34	7.8%	1	0.2%	212	48.8%	196	45.2%	238	54.8%	434
Belvedere	2	0.4%	59	11.2%	50	9.5%	0	0.0%	241	45.6%	32	6.1%	2	0.4%	142	26.9%	242	45.8%	286	54.2%	528
Bonnie Brae	0	0.0%	143	19.7%	48	6.6%	0	0.0%	117	16.1%	75	10.3%	0	0.0%	343	47.2%	350	48.2%	376	51.8%	726
Braddock	0	0.0%	160	27.5%	48	8.3%	0	0.0%	244	42.0%	30	5.2%	2	0.3%	97	16.7%	295	50.8%	286	49.2%	581
Bren Mar Park	0	0.0%	77	19.0%	79	19.5%	0	0.0%	146	36.0%	17	4.2%	1	0.2%	85	21.0%	184	45.4%	221	54.6%	405
Brookfield	2	0.3%	164	21.5%	110	14.4%	1	0.1%	218	28.6%	35	4.6%	3	0.4%	230	30.1%	364	47.7%	399	52.3%	763
Bryant Headstart	0	0.0%	10	22.7%	9	20.5%	0	0.0%	19	43.2%	1	2.3%	0	0.0%	5	11.4%	26	59.1%	18	40.9%	44
Bucknell	2	0.7%	13	4.5%	52	18.0%	0	0.0%	170	58.8%	20	6.9%	0	0.0%	32	11.1%	126	43.6%	163	56.4%	289
Bull Run	2	0.2%	233	25.3%	104	11.3%	0	0.0%	126	13.7%	56	6.1%	2	0.2%	399	43.3%	427	46.3%	495	53.7%	922
Bush Hill	2	0.4%	78	17.4%	86	19.2%	0	0.0%	67	14.9%	26	5.8%	0	0.0%	190	42.3%	215	47.9%	234	52.1%	449
Camelot	1	0.2%	75	17.6%	36	8.5%	0	0.0%	107	25.2%	38	8.9%	3	0.7%	165	38.8%	205	48.2%	220	51.8%	425
Cameron	2	0.4%	39	7.2%	124	22.8%	0	0.0%	263	48.3%	32	5.9%	0	0.0%	84	15.4%	263	48.3%	281	51.7%	544
Canterbury Woods	1	0.1%	163	22.5%	26	3.6%	0	0.0%	54	7.4%	44	6.1%	0	0.0%	438	60.3%	345	47.5%	381	52.5%	726
Cardinal Forest	1	0.2%	102	16.9%	63	10.5%	1	0.2%	109	18.1%	48	8.0%	3	0.5%	275	45.7%	291	48.3%	311	51.7%	602
Centre Ridge	1	0.1%	263	29.0%	121	13.3%	0	0.0%	173	19.1%	77	8.5%	4	0.4%	269	29.6%	429	47.2%	479	52.8%	908
Centreville	1	0.1%	246	28.6%	96	11.2%	1	0.1%	116	13.5%	61	7.1%	3	0.3%	335	39.0%	425	49.5%	434	50.5%	859
Cherry Run	0	0.0%	82	16.1%	24	4.7%	0	0.0%	26	5.1%	41	8.1%	0	0.0%	335	65.9%	241	47.4%	267	52.6%	508
Chesterbrook	0	0.0%	37	6.9%	3	0.6%	1	0.2%	32	6.0%	33	6.2%	2	0.4%	428	79.9%	272	50.7%	264	49.3%	536
Churchill Road	1	0.1%	143	20.3%	4	0.6%	0	0.0%	26	3.7%	50	7.1%	0	0.0%	481	68.2%	328	46.5%	377	53.5%	705
Clearview	1	0.2%	87	16.6%	24	4.6%	0	0.0%	164	31.2%	36	6.9%	0	0.0%	213	40.6%	229	43.6%	296	56.4%	525
Clermont	0	0.0%	36	8.6%	29	6.9%	0	0.0%	77	18.3%	29	6.9%	4	1.0%	246	58.4%	209	49.6%	212	50.4%	421
Clifton	0	0.0%	24	6.4%	1	0.3%	2	0.5%	13	3.5%	29	7.7%	10	2.7%	297	79.0%	175	46.5%	201	53.5%	376
Columbia	0	0.0%	78	20.7%	56	14.9%	0	0.0%	78	20.7%	34	9.0%	2	0.5%	129	34.2%	184	48.8%	193	51.2%	377
Colvin Run	1	0.1%	136	15.9%	21	2.5%	0	0.0%	26	3.0%	61	7.2%	0	0.0%	608	71.3%	395	46.3%	458	53.7%	853
Crestwood	0	0.0%	92	17.5%	16	3.0%	0	0.0%	314	59.8%	24	4.6%	3	0.6%	76	14.5%	250	47.6%	275	52.4%	525
Crossfield	5	0.6%	117	15.1%	22	2.8%	3	0.4%	30	3.9%	37	4.8%	0	0.0%	559	72.3%	393	50.8%	380	49.2%	773
Cub Run	0	0.0%	85	16.3%	37	7.1%	1	0.2%	53	10.2%	56	10.8%	1	0.2%	287	55.2%	242	46.5%	278	53.5%	520
Cunningham Park	2	0.5%	45	11.2%	13	3.2%	0	0.0%	67	16.7%	29	7.2%	0	0.0%	245	61.1%	194	48.4%	207	51.6%	401
Daniels Run	4	0.5%	123	16.5%	55	7.4%	2	0.3%	159	21.3%	60	8.0%	7	0.9%	337	45.1%	371	49.7%	376	50.3%	747
Deer Park	0	0.0%	154	20.7%	35	4.7%	3	0.4%	70	9.4%	51	6.9%	15	2.0%	415	55.9%	354	47.6%	389	52.4%	743
Dogwood	2	0.3%	67	11.5%	101	17.4%	0	0.0%	280	48.1%	34	5.8%	2	0.3%	96	16.5%	300	51.5%	282	48.5%	582
Dranesville	3	0.5%	84	12.8%	37	5.6%	0	0.0%	156	23.7%	40	6.1%	2	0.3%	336	51.1%	304	46.2%	354	53.8%	658
Eagle View	2	0.3%	256	37.3%	107	15.6%	1	0.1%	60	8.7%	61	8.9%	5	0.7%	195	28.4%	308	44.8%	379	55.2%	687

FAIRFAX COUNTY PUBLIC SCHOOLS
STUDENT MEMBERSHIP BY
ETHNIC GROUP AND GENDER
SEPTEMBER 2007

	AMER INDIAN/ ALASKAN		ASIAN/PACIFIC ISLANDER		BLACK		HAWAIIAN		HISPANIC		MULTIRACIAL		UNDESIGNATED		WHITE		FEMALE		MALE		TOTAL
	No.	Percent	No.	Percent	No.	Percent	No.	Percent	No.	Percent	No.	Percent	No.	Percent	No.	Percent	No.	Percent	No.	Percent	
Fairfax Villa	1	0.3%	100	26.1%	51	13.3%	1	0.3%	36	9.4%	18	4.7%	1	0.3%	175	45.7%	178	46.5%	205	53.5%	383
Fairhill	0	0.0%	205	37.1%	36	6.5%	1	0.2%	69	12.5%	47	8.5%	3	0.5%	192	34.7%	274	49.5%	279	50.5%	553
Fairview	1	0.2%	81	14.0%	35	6.0%	0	0.0%	42	7.2%	32	5.5%	1	0.2%	388	66.9%	289	49.8%	291	50.2%	580
Flint Hill	1	0.1%	69	10.2%	17	2.5%	2	0.3%	35	5.2%	53	7.8%	0	0.0%	501	73.9%	325	47.9%	353	52.1%	678
Floris	0	0.0%	347	42.8%	32	3.9%	3	0.4%	33	4.1%	41	5.1%	0	0.0%	355	43.8%	397	49.0%	414	51.0%	811
Forest Edge	1	0.1%	151	19.2%	129	16.4%	0	0.0%	72	9.2%	52	6.6%	6	0.8%	375	47.7%	340	43.3%	446	56.7%	786
Forestdale	0	0.0%	110	26.3%	63	15.0%	1	0.2%	116	27.7%	29	6.9%	0	0.0%	100	23.9%	194	46.3%	225	53.7%	419
Forestville	3	0.4%	109	14.4%	11	1.5%	0	0.0%	20	2.6%	30	4.0%	0	0.0%	583	77.1%	361	47.8%	395	52.2%	756
Fort Belvoir	8	0.6%	12	0.9%	360	27.8%	8	0.6%	103	8.0%	184	14.2%	0	0.0%	619	47.8%	629	48.6%	665	51.4%	1294
Fort Hunt	2	0.4%	27	4.7%	102	17.9%	0	0.0%	57	10.0%	63	11.0%	1	0.2%	319	55.9%	293	51.3%	278	48.7%	571
Fox Mill	1	0.1%	128	18.0%	12	1.7%	0	0.0%	29	4.1%	98	13.8%	4	0.6%	438	61.7%	341	48.0%	369	52.0%	710
Franconia	1	0.2%	99	21.1%	71	15.1%	0	0.0%	90	19.1%	41	8.7%	1	0.2%	167	35.5%	227	48.3%	243	51.7%	470
Freedom Hill	0	0.0%	165	31.1%	19	3.6%	0	0.0%	108	20.3%	32	6.0%	2	0.4%	205	38.6%	263	49.5%	268	50.5%	531
Garfield	0	0.0%	132	41.1%	37	11.5%	0	0.0%	59	18.4%	13	4.0%	1	0.3%	79	24.6%	157	48.9%	164	51.1%	321
Glen Forest	1	0.1%	109	13.6%	153	19.1%	1	0.1%	282	35.3%	31	3.9%	4	0.5%	218	27.3%	365	45.7%	434	54.3%	799
Graham Road	0	0.0%	58	16.3%	49	13.8%	0	0.0%	221	62.1%	8	2.2%	3	0.8%	17	4.8%	191	53.7%	165	46.3%	356
Great Falls	2	0.3%	59	10.2%	2	0.3%	0	0.0%	18	3.1%	42	7.2%	0	0.0%	458	78.8%	296	50.9%	285	49.1%	581
Greenbriar East	3	0.5%	190	30.8%	62	10.1%	0	0.0%	70	11.4%	59	9.6%	4	0.6%	228	37.0%	305	49.5%	311	50.5%	616
Greenbriar West	0	0.0%	323	41.9%	35	4.5%	0	0.0%	31	4.0%	67	8.7%	5	0.6%	310	40.2%	379	49.2%	392	50.8%	771
Groveton	0	0.0%	78	13.1%	213	35.8%	4	0.7%	181	30.4%	30	5.0%	5	0.8%	84	14.1%	289	48.6%	306	51.4%	595
Gunston	0	0.0%	87	13.4%	154	23.8%	3	0.5%	143	22.1%	53	8.2%	0	0.0%	208	32.1%	308	47.5%	340	52.5%	648
Halley	0	0.0%	114	17.8%	89	13.9%	2	0.3%	100	15.6%	50	7.8%	1	0.2%	284	44.4%	307	48.0%	333	52.0%	640
Haycock	0	0.0%	114	16.0%	13	1.8%	1	0.1%	32	4.5%	66	9.2%	4	0.6%	484	67.8%	349	48.9%	365	51.1%	714
Hayfield	0	0.0%	65	12.1%	95	17.6%	3	0.6%	41	7.6%	43	8.0%	0	0.0%	292	54.2%	256	47.5%	283	52.5%	539
Herndon	1	0.1%	90	12.6%	88	12.3%	0	0.0%	207	29.0%	59	8.3%	1	0.1%	269	37.6%	337	47.1%	378	52.9%	715
Hollin Meadows	2	0.3%	62	10.6%	202	34.6%	1	0.2%	108	18.5%	45	7.7%	1	0.2%	162	27.8%	272	46.7%	311	53.3%	583
Hunt Valley	0	0.0%	92	15.5%	42	7.1%	0	0.0%	53	8.9%	36	6.1%	0	0.0%	370	62.4%	291	49.1%	302	50.9%	593
Hunters Woods	1	0.1%	254	25.3%	120	12.0%	0	0.0%	58	5.8%	71	7.1%	2	0.2%	498	49.6%	485	48.3%	519	51.7%	1004
Hutchison	0	0.0%	110	18.6%	74	12.5%	1	0.2%	292	49.4%	28	4.7%	6	1.0%	80	13.5%	278	47.0%	313	53.0%	591
Hybla Valley	0	0.0%	33	4.8%	186	27.0%	0	0.0%	421	61.0%	29	4.2%	2	0.3%	19	2.8%	360	52.2%	330	47.8%	690
Island Creek	3	0.4%	92	12.1%	148	19.5%	1	0.1%	80	10.5%	74	9.7%	5	0.7%	357	47.0%	340	44.7%	420	55.3%	760
Keene Mill	2	0.3%	132	21.7%	28	4.6%	2	0.3%	129	21.2%	55	9.0%	2	0.3%	259	42.5%	292	47.9%	317	52.1%	609
Kent Gardens	0	0.0%	163	17.8%	26	2.8%	0	0.0%	51	5.6%	69	7.5%	1	0.1%	607	66.2%	489	53.3%	428	46.7%	917
Kings Glen	2	0.4%	87	17.4%	27	5.4%	1	0.2%	115	23.0%	29	5.8%	0	0.0%	239	47.8%	240	48.0%	260	52.0%	500
Kings Park	0	0.0%	137	19.3%	36	5.1%	1	0.1%	150	21.1%	53	7.5%	5	0.7%	329	46.3%	342	48.1%	369	51.9%	711
Lake Anne	1	0.2%	55	9.8%	112	20.0%	0	0.0%	123	21.9%	78	13.9%	2	0.4%	190	33.9%	285	50.8%	276	49.2%	561
Lane	4	0.6%	131	18.2%	158	22.0%	1	0.1%	82	11.4%	66	9.2%	11	1.5%	266	37.0%	350	48.7%	369	51.3%	719
Laurel Ridge	0	0.0%	107	13.1%	36	4.4%	0	0.0%	102	12.5%	85	10.4%	17	2.1%	468	57.4%	393	48.2%	422	51.8%	815
Lees Corner	2	0.3%	182	26.7%	22	3.2%	0	0.0%	54	7.9%	37	5.4%	0	0.0%	385	56.5%	326	47.8%	356	52.2%	682

FAIRFAX COUNTY PUBLIC SCHOOLS
STUDENT MEMBERSHIP BY
ETHNIC GROUP AND GENDER
SEPTEMBER 2007

	AMER INDIAN/ ALASKAN		ASIAN/PACIFIC ISLANDER		BLACK		HAWAIIAN		HISPANIC		MULTIRACIAL		UNDESIGNATED		WHITE		FEMALE		MALE		TOTAL
	No.	Percent	No.	Percent	No.	Percent	No.	Percent	No.	Percent	No.	Percent	No.	Percent	No.	Percent	No.	Percent	No.	Percent	
Lemon Road	2	0.7%	46	15.9%	16	5.5%	0	0.0%	81	28.0%	15	5.2%	2	0.7%	127	43.9%	142	49.1%	147	50.9%	289
Little Run	2	0.5%	61	16.3%	15	4.0%	0	0.0%	78	20.9%	29	7.8%	0	0.0%	189	50.5%	188	50.3%	186	49.7%	374
London Towne	3	0.4%	93	11.1%	105	12.6%	1	0.1%	299	35.8%	90	10.8%	3	0.4%	241	28.9%	407	48.7%	428	51.3%	835
Lorton Station	0	0.0%	235	22.4%	315	30.0%	2	0.2%	166	15.8%	55	5.2%	9	0.9%	269	25.6%	510	48.5%	541	51.5%	1051
Lynbrook	0	0.0%	65	15.8%	36	8.7%	0	0.0%	249	60.4%	15	3.6%	2	0.5%	45	10.9%	196	47.6%	216	52.4%	412
Mantua	0	0.0%	215	25.6%	28	3.3%	0	0.0%	64	7.6%	43	5.1%	1	0.1%	489	58.2%	402	47.9%	438	52.1%	840
Marshall Road	1	0.2%	124	23.3%	16	3.0%	0	0.0%	38	7.1%	34	6.4%	3	0.6%	316	59.4%	240	45.1%	292	54.9%	532
McNair	0	0.0%	261	27.7%	191	20.3%	3	0.3%	273	29.0%	67	7.1%	3	0.3%	143	15.2%	468	49.7%	473	50.3%	941
Mosby Woods	3	0.5%	190	29.1%	76	11.6%	0	0.0%	101	15.4%	45	6.9%	1	0.2%	238	36.4%	334	51.1%	320	48.9%	654
Mount Eagle	1	0.4%	18	6.8%	57	21.4%	0	0.0%	161	60.5%	11	4.1%	0	0.0%	18	6.8%	130	48.9%	136	51.1%	266
Mount Vernon Woods	0	0.0%	28	5.1%	165	29.8%	0	0.0%	326	59.0%	12	2.2%	2	0.4%	20	3.6%	267	48.3%	286	51.7%	553
Navy	0	0.0%	218	26.0%	34	4.0%	0	0.0%	38	4.5%	44	5.2%	2	0.2%	504	60.0%	391	46.5%	449	53.5%	840
Newington Forest	1	0.2%	70	11.3%	81	13.0%	0	0.0%	114	18.4%	57	9.2%	0	0.0%	298	48.0%	275	44.3%	346	55.7%	621
North Springfield	0	0.0%	129	23.5%	48	8.8%	1	0.2%	138	25.2%	47	8.6%	1	0.2%	184	33.6%	241	44.0%	307	56.0%	548
Oak Hill	0	0.0%	342	35.3%	33	3.4%	0	0.0%	43	4.4%	47	4.8%	1	0.1%	504	52.0%	441	45.5%	529	54.5%	970
Oak View	0	0.0%	105	15.3%	35	5.1%	0	0.0%	46	6.7%	51	7.4%	2	0.3%	448	65.2%	334	48.6%	353	51.4%	687
Oakton	0	0.0%	109	17.8%	14	2.3%	0	0.0%	34	5.6%	47	7.7%	0	0.0%	408	66.7%	278	45.4%	334	54.6%	612
Olde Creek	2	0.5%	81	21.0%	30	7.8%	0	0.0%	56	14.5%	12	3.1%	0	0.0%	205	53.1%	177	45.9%	209	54.1%	386
Orange Hunt	5	0.6%	63	7.7%	37	4.5%	0	0.0%	39	4.8%	40	4.9%	0	0.0%	637	77.6%	409	49.8%	412	50.2%	821
Parklawn	0	0.0%	80	13.1%	175	28.6%	1	0.2%	245	40.0%	23	3.8%	0	0.0%	88	14.4%	297	48.5%	315	51.5%	612
Pine Spring	1	0.2%	110	22.1%	27	5.4%	0	0.0%	194	39.0%	35	7.0%	2	0.4%	128	25.8%	238	47.9%	259	52.1%	497
Poplar Tree	7	0.9%	148	19.7%	26	3.5%	0	0.0%	78	10.4%	61	8.1%	1	0.1%	430	57.3%	359	47.8%	392	52.2%	751
Powell	2	0.2%	471	51.8%	63	6.9%	0	0.0%	52	5.7%	39	4.3%	1	0.1%	282	31.0%	426	46.8%	484	53.2%	910
Providence	4	0.5%	138	17.3%	48	6.0%	1	0.1%	218	27.4%	56	7.0%	2	0.3%	330	41.4%	403	50.6%	394	49.4%	797
Ravensthorpe	2	0.4%	75	14.5%	16	3.1%	0	0.0%	84	16.2%	53	10.3%	0	0.0%	287	55.5%	247	47.8%	270	52.2%	517
Riverside	2	0.4%	35	6.4%	217	39.4%	0	0.0%	173	31.4%	29	5.3%	3	0.5%	92	16.7%	293	53.2%	258	46.8%	551
Rolling Valley	2	0.4%	123	24.8%	52	10.5%	1	0.2%	54	10.9%	45	9.1%	3	0.6%	216	43.5%	233	47.0%	263	53.0%	496
Rose Hill	3	0.4%	85	10.7%	98	12.3%	0	0.0%	329	41.2%	59	7.4%	0	0.0%	224	28.1%	402	50.4%	396	49.6%	798
Sangster	1	0.1%	102	13.6%	26	3.5%	0	0.0%	34	4.5%	50	6.7%	5	0.7%	532	70.9%	368	49.1%	382	50.9%	750
Saratoga	0	0.0%	129	17.0%	148	19.6%	0	0.0%	143	18.9%	56	7.4%	1	0.1%	280	37.0%	365	48.2%	392	51.8%	757
Sherman	0	0.0%	62	16.5%	8	2.1%	0	0.0%	14	3.7%	21	5.6%	0	0.0%	271	72.1%	184	48.9%	192	51.1%	376
Shreveewood	0	0.0%	130	28.4%	40	8.8%	0	0.0%	78	17.1%	25	5.5%	1	0.2%	183	40.0%	231	50.5%	226	49.5%	457
Silverbrook	11	0.9%	244	20.0%	131	10.7%	1	0.1%	54	4.4%	62	5.1%	41	3.4%	676	55.4%	620	50.8%	600	49.2%	1220
Sleepy Hollow	0	0.0%	35	9.4%	13	3.5%	0	0.0%	150	40.2%	20	5.4%	1	0.3%	154	41.3%	178	47.7%	195	52.3%	373
Spring Hill	1	0.1%	203	23.1%	13	1.5%	0	0.0%	33	3.8%	44	5.0%	0	0.0%	585	66.6%	435	49.5%	444	50.5%	879
Springfield Estates	2	0.3%	162	23.5%	127	18.5%	0	0.0%	140	20.3%	33	4.8%	15	2.2%	209	30.4%	319	46.4%	369	53.6%	688
Stenwood	1	0.2%	97	21.0%	23	5.0%	1	0.2%	26	5.6%	23	5.0%	0	0.0%	290	62.9%	220	47.7%	241	52.3%	461
Stratford Landing	1	0.1%	39	5.2%	94	12.6%	0	0.0%	49	6.5%	34	4.5%	19	2.5%	513	68.5%	364	48.6%	385	51.4%	749
Sunrise Valley	1	0.2%	116	21.2%	13	2.4%	0	0.0%	22	4.0%	42	7.7%	3	0.5%	349	63.9%	277	50.7%	269	49.3%	546

FAIRFAX COUNTY PUBLIC SCHOOLS
STUDENT MEMBERSHIP BY
ETHNIC GROUP AND GENDER
SEPTEMBER 2007

	AMER INDIAN/ ALASKAN		ASIAN/PACIFIC ISLANDER		BLACK		HAWAIIAN		HISPANIC		MULTIRACIAL		UNDESIGNATED		WHITE		FEMALE		MALE		TOTAL
	No.	Percent	No.	Percent	No.	Percent	No.	Percent	No.	Percent	No.	Percent	No.	Percent	No.	Percent	No.	Percent	No.	Percent	
Terra-Centre	5	0.8%	82	13.7%	32	5.4%	0	0.0%	87	14.5%	51	8.5%	9	1.5%	332	55.5%	257	43.0%	341	57.0%	598
Terraset	0	0.0%	27	6.9%	87	22.4%	0	0.0%	96	24.7%	29	7.5%	2	0.5%	148	38.0%	179	46.0%	210	54.0%	389
Timber Lane	0	0.0%	89	18.5%	51	10.6%	0	0.0%	211	44.0%	26	5.4%	0	0.0%	103	21.5%	229	47.7%	251	52.3%	480
Union Mill	1	0.1%	118	15.1%	24	3.1%	1	0.1%	32	4.1%	42	5.4%	6	0.8%	558	71.4%	367	46.9%	415	53.1%	782
Vienna	1	0.3%	50	13.9%	14	3.9%	0	0.0%	22	6.1%	26	7.2%	11	3.1%	236	65.6%	176	48.9%	184	51.1%	360
Virginia Run	1	0.1%	74	9.2%	17	2.1%	1	0.1%	46	5.7%	49	6.1%	5	0.6%	611	76.0%	392	48.8%	412	51.2%	804
Wakefield Forest	0	0.0%	61	12.3%	8	1.6%	0	0.0%	32	6.4%	48	9.7%	0	0.0%	348	70.0%	233	46.9%	264	53.1%	497
Waples Mill	5	0.6%	156	18.9%	17	2.1%	0	0.0%	44	5.3%	55	6.7%	3	0.4%	545	66.1%	385	46.7%	440	53.3%	825
Washington Mill	0	0.0%	50	9.3%	148	27.6%	4	0.7%	131	24.4%	39	7.3%	0	0.0%	164	30.6%	238	44.4%	298	55.6%	536
Waynewood	0	0.0%	9	1.5%	3	0.5%	0	0.0%	9	1.5%	27	4.4%	4	0.6%	568	91.6%	275	44.4%	345	55.6%	620
West Springfield	0	0.0%	51	11.8%	34	7.9%	0	0.0%	24	5.5%	40	9.2%	1	0.2%	283	65.4%	214	49.4%	219	50.6%	433
Westbriar	0	0.0%	77	17.4%	8	1.8%	0	0.0%	21	4.8%	29	6.6%	2	0.5%	305	69.0%	220	49.8%	222	50.2%	442
Westgate	3	0.9%	79	23.9%	40	12.1%	0	0.0%	70	21.1%	18	5.4%	2	0.6%	119	36.0%	157	47.4%	174	52.6%	331
Westlawn	1	0.2%	151	24.3%	21	3.4%	0	0.0%	320	51.4%	27	4.3%	8	1.3%	94	15.1%	283	45.5%	339	54.5%	622
Weyanoke	0	0.0%	117	22.8%	148	28.8%	0	0.0%	163	31.7%	26	5.1%	2	0.4%	58	11.3%	247	48.1%	267	51.9%	514
White Oaks	1	0.1%	160	21.4%	58	7.7%	0	0.0%	100	13.4%	74	9.9%	1	0.1%	355	47.4%	368	49.1%	381	50.9%	749
Willow Springs	1	0.2%	163	25.2%	21	3.2%	1	0.2%	30	4.6%	34	5.3%	0	0.0%	397	61.4%	317	49.0%	330	51.0%	647
Wolftrap	1	0.2%	42	6.6%	4	0.6%	0	0.0%	10	1.6%	32	5.0%	0	0.0%	545	86.0%	313	49.4%	321	50.6%	634
Woodburn	0	0.0%	132	29.0%	52	11.4%	1	0.2%	96	21.1%	29	6.4%	1	0.2%	144	31.6%	207	45.5%	248	54.5%	455
Woodlawn	2	0.4%	35	7.3%	162	33.6%	1	0.2%	193	40.0%	32	6.6%	0	0.0%	57	11.8%	245	50.8%	237	49.2%	482
Woodley Hills	0	0.0%	25	4.5%	149	26.7%	0	0.0%	217	38.8%	32	5.7%	0	0.0%	136	24.3%	289	51.7%	270	48.3%	559
ELEM TOTALS	171	0.2%	15,661	18.3%	8,890	10.4%	76	0.1%	15,365	18.0%	5,899	6.9%	393	0.5%	39,131	45.7%	41,245	48.2%	44,341	51.8%	85,586

FAIRFAX COUNTY PUBLIC SCHOOLS
STUDENT MEMBERSHIP BY
ETHNIC GROUP AND GENDER
SEPTEMBER 2007

	AMER INDIAN/ ALASKAN		ASIAN/PACIFIC ISLANDER		BLACK		HAWAIIAN		HISPANIC		MULTIRACIAL		UNDESIGNATED		WHITE		FEMALE		MALE		TOTAL
	No.	Percent	No.	Percent	No.	Percent	No.	Percent	No.	Percent	No.	Percent	No.	Percent	No.	Percent	No.	Percent	No.	Percent	
Carson Middle	2	0.2%	309	26.3%	74	6.3%	0	0.0%	56	4.8%	67	5.7%	3	0.3%	666	56.6%	557	47.3%	620	52.7%	1177
Cooper Middle	3	0.3%	123	13.6%	20	2.2%	0	0.0%	26	2.9%	41	4.5%	0	0.0%	691	76.4%	457	50.6%	447	49.4%	904
Franklin Middle	4	0.4%	184	19.4%	54	5.7%	0	0.0%	85	9.0%	49	5.2%	1	0.1%	570	60.2%	477	50.4%	470	49.6%	947
Frost Middle	2	0.2%	214	20.4%	34	3.2%	0	0.0%	60	5.7%	60	5.7%	0	0.0%	678	64.7%	487	46.5%	561	53.5%	1048
Glasgow Middle	1	0.1%	178	16.3%	120	11.0%	0	0.0%	435	39.9%	37	3.4%	9	0.8%	310	28.4%	521	47.8%	569	52.2%	1090
Hayfield Middle	1	0.1%	127	12.8%	255	25.8%	2	0.2%	178	18.0%	64	6.5%	6	0.6%	357	36.1%	487	49.2%	503	50.8%	990
Herndon Middle	3	0.3%	122	12.0%	90	8.8%	0	0.0%	252	24.7%	59	5.8%	3	0.3%	491	48.1%	456	44.7%	564	55.3%	1020
Holmes Middle	1	0.1%	151	19.6%	163	21.2%	0	0.0%	220	28.6%	35	4.6%	2	0.3%	197	25.6%	368	47.9%	401	52.1%	769
Hughes Middle	4	0.5%	114	13.6%	150	17.9%	0	0.0%	148	17.7%	51	6.1%	2	0.2%	369	44.0%	404	48.2%	434	51.8%	838
Irving Middle	3	0.3%	138	13.0%	64	6.0%	0	0.0%	100	9.5%	48	4.5%	3	0.3%	702	66.4%	499	47.2%	559	52.8%	1058
Jackson Middle	0	0.0%	220	23.8%	88	9.5%	0	0.0%	301	32.5%	36	3.9%	3	0.3%	278	30.0%	437	47.2%	489	52.8%	926
Key Middle	5	0.6%	202	24.6%	124	15.1%	0	0.0%	246	30.0%	21	2.6%	0	0.0%	222	27.1%	395	48.2%	425	51.8%	820
Kilmer Middle	0	0.0%	238	22.4%	50	4.7%	0	0.0%	95	8.9%	51	4.8%	3	0.3%	627	58.9%	508	47.7%	556	52.3%	1064
Lake Braddock Middle	5	0.4%	253	19.2%	82	6.2%	0	0.0%	170	12.9%	70	5.3%	2	0.2%	735	55.8%	670	50.9%	647	49.1%	1317
Lanier Middle	1	0.1%	237	23.3%	94	9.3%	1	0.1%	164	16.1%	59	5.8%	1	0.1%	459	45.2%	509	50.1%	507	49.9%	1016
Liberty Middle	4	0.4%	296	26.4%	124	11.0%	1	0.1%	125	11.1%	44	3.9%	4	0.4%	525	46.7%	522	46.5%	601	53.5%	1123
Longfellow Middle	5	0.5%	204	19.3%	25	2.4%	3	0.3%	71	6.7%	54	5.1%	2	0.2%	694	65.6%	482	45.6%	576	54.4%	1058
Poe Middle	3	0.3%	273	23.7%	145	12.6%	0	0.0%	414	35.9%	37	3.2%	3	0.3%	279	24.2%	562	48.7%	592	51.3%	1154
Robinson Middle	5	0.4%	194	15.7%	72	5.8%	2	0.2%	136	11.0%	67	5.4%	2	0.2%	760	61.4%	607	49.0%	631	51.0%	1238
Rocky Run Middle	10	1.2%	214	26.3%	35	4.3%	3	0.4%	60	7.4%	43	5.3%	0	0.0%	449	55.2%	383	47.1%	431	52.9%	814
Sandburg Middle	5	0.4%	86	7.5%	281	24.4%	1	0.1%	235	20.4%	56	4.9%	2	0.2%	487	42.2%	559	48.5%	594	51.5%	1153
South County Middle	1	0.1%	149	16.8%	139	15.7%	0	0.0%	84	9.5%	58	6.6%	4	0.5%	450	50.8%	412	46.6%	473	53.4%	885
Stone Middle	4	0.4%	126	13.4%	56	6.0%	1	0.1%	129	13.7%	51	5.4%	0	0.0%	574	61.0%	447	47.5%	494	52.5%	941
Thoreau Middle	6	0.8%	100	12.9%	17	2.2%	1	0.1%	48	6.2%	53	6.8%	5	0.6%	547	70.4%	375	48.3%	402	51.7%	777
Twain Middle	2	0.2%	116	13.9%	157	18.8%	0	0.0%	200	23.9%	49	5.9%	1	0.1%	312	37.3%	388	46.4%	449	53.6%	837
Whitman Middle	3	0.3%	42	4.5%	318	34.4%	1	0.1%	271	29.3%	55	6.0%	0	0.0%	234	25.3%	447	48.4%	477	51.6%	924
MIDDLE TOTALS	83	0.3%	4,610	17.8%	2,831	10.9%	16	0.1%	4,309	16.6%	1,315	5.1%	61	0.2%	12,663	48.9%	12,416	48.0%	13,472	52.0%	25,888

FAIRFAX COUNTY PUBLIC SCHOOLS
STUDENT MEMBERSHIP BY
ETHNIC GROUP AND GENDER
SEPTEMBER 2007

	AMER INDIAN/ ALASKAN		ASIAN/PACIFIC ISLANDER		BLACK		HAWAIIAN		HISPANIC		MULTIRACIAL		UNDESIGNATED		WHITE		FEMALE		MALE		TOTAL
	No.	Percent	No.	Percent	No.	Percent	No.	Percent	No.	Percent	No.	Percent	No.	Percent	No.	Percent	No.	Percent	No.	Percent	
Annandale High	8	0.3%	533	22.4%	351	14.7%	2	0.1%	671	28.2%	72	3.0%	3	0.1%	743	31.2%	1148	48.2%	1235	51.8%	2383
Centreville High	7	0.3%	654	28.7%	225	9.9%	1	0.0%	233	10.2%	90	3.9%	1	0.0%	1071	46.9%	1129	49.5%	1153	50.5%	2282
Chantilly High	14	0.5%	618	21.8%	176	6.2%	1	0.0%	220	7.8%	86	3.0%	5	0.2%	1718	60.5%	1376	48.5%	1462	51.5%	2838
Edison High	6	0.3%	221	12.4%	363	20.4%	2	0.1%	451	25.4%	79	4.4%	3	0.2%	651	36.7%	875	49.3%	901	50.7%	1776
Fairfax High	4	0.2%	549	25.8%	193	9.1%	0	0.0%	296	13.9%	88	4.1%	1	0.0%	994	46.8%	1037	48.8%	1088	51.2%	2125
Falls Church High	2	0.2%	283	21.5%	105	8.0%	0	0.0%	478	36.3%	42	3.2%	1	0.1%	407	30.9%	641	48.6%	677	51.4%	1318
Hayfield High	5	0.3%	225	14.2%	377	23.8%	3	0.2%	238	15.0%	87	5.5%	16	1.0%	631	39.9%	793	50.1%	789	49.9%	1582
Herndon High	6	0.3%	265	12.1%	200	9.1%	1	0.0%	438	20.0%	74	3.4%	3	0.1%	1203	54.9%	1021	46.6%	1169	53.4%	2190
Jefferson Sci/Tech Hig	5	0.3%	685	38.0%	33	1.8%	1	0.1%	46	2.5%	97	5.4%	3	0.2%	935	51.8%	843	46.7%	962	53.3%	1805
Lake Braddock High	13	0.5%	506	20.2%	137	5.5%	0	0.0%	348	13.9%	115	4.6%	5	0.2%	1386	55.2%	1183	47.1%	1327	52.9%	2510
Langley High	4	0.2%	367	17.6%	30	1.4%	0	0.0%	68	3.3%	74	3.6%	3	0.1%	1537	73.8%	971	46.6%	1112	53.4%	2083
Lee High	6	0.3%	477	25.4%	302	16.1%	2	0.1%	467	24.9%	58	3.1%	4	0.2%	559	29.8%	898	47.9%	977	52.1%	1875
Madison High	8	0.4%	226	11.8%	61	3.2%	0	0.0%	121	6.3%	76	4.0%	6	0.3%	1412	73.9%	937	49.1%	973	50.9%	1910
Marshall High	3	0.2%	266	20.1%	100	7.5%	0	0.0%	182	13.7%	46	3.5%	0	0.0%	728	54.9%	644	48.6%	681	51.4%	1325
McLean High	10	0.6%	332	18.8%	58	3.3%	1	0.1%	154	8.7%	77	4.4%	0	0.0%	1136	64.3%	852	48.2%	916	51.8%	1768
Mount Vernon High	5	0.3%	107	6.1%	596	33.9%	2	0.1%	411	23.4%	91	5.2%	7	0.4%	539	30.7%	871	49.5%	887	50.5%	1758
Oakton High	4	0.2%	437	18.6%	120	5.1%	1	0.0%	162	6.9%	106	4.5%	3	0.1%	1517	64.6%	1131	48.1%	1219	51.9%	2350
Robinson High	7	0.3%	501	18.2%	161	5.9%	1	0.0%	275	10.0%	132	4.8%	10	0.4%	1665	60.5%	1371	49.8%	1381	50.2%	2752
South County High	7	0.3%	365	17.9%	311	15.2%	1	0.0%	193	9.4%	84	4.1%	5	0.2%	1078	52.7%	991	48.5%	1053	51.5%	2044
South Lakes High	3	0.2%	166	11.5%	301	20.9%	1	0.1%	247	17.1%	82	5.7%	5	0.3%	638	44.2%	697	48.3%	746	51.7%	1443
Stuart High	0	0.0%	289	18.7%	188	12.2%	2	0.1%	605	39.1%	35	2.3%	10	0.6%	417	27.0%	761	49.2%	785	50.8%	1546
West Potomac High	7	0.4%	154	7.8%	496	25.0%	1	0.1%	384	19.4%	80	4.0%	0	0.0%	859	43.4%	1002	50.6%	979	49.4%	1981
West Springfield High	5	0.2%	371	16.7%	161	7.3%	3	0.1%	249	11.2%	127	5.7%	2	0.1%	1299	58.6%	1126	50.8%	1091	49.2%	2217
Westfield High	7	0.2%	575	18.1%	243	7.7%	3	0.1%	320	10.1%	136	4.3%	5	0.2%	1882	59.4%	1559	49.2%	1612	50.8%	3171
Woodson High	8	0.4%	464	21.9%	77	3.6%	1	0.0%	129	6.1%	82	3.9%	2	0.1%	1352	63.9%	1020	48.2%	1095	51.8%	2115
HIGH TOTALS	154	0.3%	9,636	18.8%	5,365	10.5%	30	0.1%	7,386	14.4%	2,116	4.1%	103	0.2%	26,357	51.5%	24,877	48.6%	26,270	51.4%	51,147

FAIRFAX COUNTY PUBLIC SCHOOLS
STUDENT MEMBERSHIP BY
ETHNIC GROUP AND GENDER
SEPTEMBER 2007

	AMER INDIAN/ ALASKAN		ASIAN/PACIFIC ISLANDER		BLACK		HAWAIIAN		HISPANIC		MULTIRACIAL		UNDESIGNATED		WHITE		FEMALE		MALE		TOTAL
	No.	Percent	No.	Percent	No.	Percent	No.	Percent	No.	Percent	No.	Percent	No.	Percent	No.	Percent	No.	Percent	No.	Percent	
Camelot		0.0%	8	13.3%	3	5.0%	0	0.0%	17	28.3%	5	8.3%		0.0%	27	45.0%	28	46.7%	32	53.3%	60
ELEM TOTALS			8	13.3%	3	5.0%	0	0.0%	17	28.3%	5	8.3%		0.0%	27	45.0%	28	46.7%	32	53.3%	60
Burke	1	1.6%	1	1.6%	22	34.9%	0	0.0%	10	15.9%	2	3.2%	0	0.0%	27	42.9%	10	15.9%	53	84.1%	63
Key	0	0.0%	16	14.2%	26	23.0%	0	0.0%	23	20.4%	5	4.4%	1	0.9%	42	37.2%	39	34.5%	74	65.5%	113
Kilmer	0	0.0%	15	19.5%	11	14.3%	0	0.0%	11	14.3%	1	1.3%	1	1.3%	38	49.4%	32	41.6%	45	58.4%	77
MIDDLE TOTALS	1	0.4%	32	12.6%	59	23.3%	0	0.0%	44	17.4%	8	3.2%	2	0.8%	107	42.3%	81	32.0%	172	68.0%	253
Cedar Lane	0	0.0%	2	2.7%	22	30.1%	0	0.0%	10	13.7%	3	4.1%	0	0.0%	36	49.3%	16	21.9%	57	78.1%	73
Davis	0	0.0%	21	16.4%	17	13.3%	0	0.0%	14	10.9%	2	1.6%	0	0.0%	74	57.8%	44	34.4%	84	65.6%	128
Pulley	1	1.0%	13	13.1%	21	21.2%	0	0.0%	13	13.1%	3	3.0%	0	0.0%	48	48.5%	38	38.4%	61	61.6%	99
Quander Road	0	0.0%	5	5.7%	21	24.1%	0	0.0%	10	11.5%	5	5.7%	2	2.3%	44	50.6%	28	32.2%	59	67.8%	87
HIGH TOTALS	1	0.3%	41	10.6%	81	20.9%	0	0.0%	47	12.1%	13	3.4%	2	0.5%	202	52.2%	126	32.6%	261	67.4%	387
SPEC ED TOTALS	2	0.3%	81	11.6%	143	20.4%	0	0.0%	108	15.4%	26	3.7%	4	0.6%	336	48.0%	235	33.6%	465	66.4%	700

FAIRFAX COUNTY PUBLIC SCHOOLS
STUDENT MEMBERSHIP BY
ETHNIC GROUP AND GENDER
SEPTEMBER 2007

	AMER INDIAN/ ALASKAN		ASIAN/PACIFIC ISLANDER		BLACK		HAWAIIAN		HISPANIC		MULTIRACIAL		UNDESIGNATED		WHITE		FEMALE		MALE		TOTAL	
	No.	Percent	No.	Percent	No.	Percent	No.	Percent	No.	Percent	No.	Percent	No.	Percent	No.	Percent	No.	Percent	No.	Percent		
ALT EDUCATION																						
Achieve, Integ. & Maturity	0	0.0%	7	14.9%	14	29.8%	0	0.0%	18	38.3%	1	2.1%	0	0.0%	7	14.9%	3	6.4%	44	93.6%	47	
ALC at Bryant	0	0.0%	1	2.2%	20	43.5%	0	0.0%	17	37.0%	0	0.0%	0	0.0%	8	17.4%	8	17.4%	38	82.6%	46	
ALC at Burke		0.0%	2	7.7%	10	38.5%		0.0%	9	34.6%	1	3.8%		0.0%	4	15.4%	5	19.2%	21	80.8%	26	
ALC at Dunn Loring	0	0.0%	8	16.0%	9	18.0%	0	0.0%	22	44.0%	3	6.0%	0	0.0%	8	16.0%	11	22.0%	39	78.0%	50	
ALC at Mountain View	0	0.0%	4	14.3%	7	25.0%	0	0.0%	11	39.3%	2	7.1%	0	0.0%	4	14.3%	5	17.9%	23	82.1%	28	
Annandale Trans ESOL	0	0.0%	4	5.6%	12	16.7%	0	0.0%	55	76.4%	0	0.0%	0	0.0%	1	1.4%	36	50.0%	36	50.0%	72	
Bryant Alternative High	0	0.0%	21	7.2%	86	29.6%	0	0.0%	142	48.8%	6	2.1%	0	0.0%	36	12.4%	169	58.1%	122	41.9%	291	
Falls Church Trans ESOL	0	0.0%	7	7.2%	3	3.1%	0	0.0%	86	88.7%	1	1.0%	0	0.0%	0	0.0%	49	50.5%	48	49.5%	97	
Interagency Alt Sec	2	0.5%	25	6.5%	94	24.3%	0	0.0%	121	31.3%	16	4.1%	1	0.3%	128	33.1%	116	30.0%	271	70.0%	387	
Landmark Career	0	0.0%	1	5.6%	1	5.6%	0	0.0%	8	44.4%	4	22.2%	0	0.0%	4	22.2%	4	22.2%	14	77.8%	18	
Lee Trans ESOL	0	0.0%	23	18.3%	3	2.4%	0	0.0%	96	76.2%	0	0.0%	0	0.0%	4	3.2%	69	54.8%	57	45.2%	126	
Mountain View School	1	0.4%	37	15.7%	26	11.0%	0	0.0%	104	44.1%	6	2.5%	1	0.4%	61	25.8%	97	41.1%	139	58.9%	236	
Pimmit Alternative High	0	0.0%	51	20.7%	43	17.5%	0	0.0%	120	48.8%	4	1.6%	0	0.0%	28	11.4%	115	46.7%	131	53.3%	246	
South Lakes Trans ESOL	0	0.0%	1	0.8%	16	12.2%	0	0.0%	112	85.5%	0	0.0%	0	0.0%	2	1.5%	67	51.1%	64	48.9%	131	
Woodson Adult Ed	1	0.3%	52	16.4%	41	12.9%	1	0.3%	162	51.1%	3	0.9%	0	0.0%	57	18.0%	151	47.6%	166	52.4%	317	
ALT ED TOTALS	4	0.2%	244	11.5%	385	18.2%	1	0.0%	1,083	51.1%	47	2.2%	2	0.1%	352	16.6%	905	42.7%	1,213	57.3%	2,118	