



STATISTICAL REPORT

FAIRFAX COUNTY PUBLIC SCHOOLS  FAIRFAX, VIRGINIA

REPORT OF STUDENT MEMBERSHIP BY ETHNIC GROUP AND GENDER September 30, 2005

Purpose

This report has been prepared as an annual review of student ethnic groups for the 2005-2006 school year. It provides management information for Fairfax County Public Schools.

Contents

Page

Preface:

Introduction.....	2
2005 – 2006 Student Ethnic and Gender Membership.....	3
1985 to 2005 Ethnic Membership at Five-Year Intervals.....	4
2001 to 2005 Change in Minority Membership.....	6
1985 and 2005 Change in Minority Membership.....	7

List of Data Tables:

Elementary School Membership by Ethnic Group and Gender.....	8
Middle School Membership by Ethnic Group and Gender.....	12
High School Membership by Ethnic Group and Gender.....	13
Special Education Centers Membership by Ethnic Group and Gender.....	14
Alternative Education by Ethnic Group and Gender.....	15

Date of Publication:
October 2005

INTRODUCTION

The Report of Student Membership by Ethnic Group and Gender is based on student membership data as of September 30, 2005. Ethnic student data are collected from the parents/guardians at the time of initial Fairfax County Public School (FCPS) registration. No student is counted in more than one category.

FCPS uses the ethnic classifications established by the United States Department of Education pursuant to Title VI of the Civil Rights Act of 1964, Title IX of the Education Amendments of 1972, and under section 504 of the Rehabilitation Act of 1973. These classifications include the categories American Indian or Alaskan Native, Asian or Pacific Islander, Hispanic, Black, and White. A local code titled "Undesignated" is used when the parent/guardian of a student refuses to identify the student with one of the five federal classifications. Beginning with the 1994-95 school year, FCPS added "Multiracial" to the list of ethnic classifications. The term Multiracial is defined as "persons whose parents have origins in two or more racial or ethnic groups." Beginning with the 2003-04 school year, the Virginia Department of Education and FCPS added "Hawaiian" to the list of ethnic classifications.

For local reporting purposes, there are eight ethnic classifications: the six classifications prescribed for federal and state reporting, Undesignated, and Multiracial. The term minorities includes the categories American Indian or Alaskan Native, Asian or Pacific Islander, Hawaiian, Hispanic, Black, and Multiracial.

Membership is reported by elementary, middle and high schools, special education centers, and alternative education schools and centers.

- As of September 30, 2005, Fairfax County Public School student membership was 163,534. Table I displays the number and percentage of students in each ethnic and gender category and level.

TABLE I

2005 - 2006 STUDENT ETHNIC AND GENDER MEMBERSHIP

	Amer. Indian/Alaskan		Asian/Pacific Islander		Black		Hawaiian		Hispanic		Multiracial		Undesignated		White		Female		Male		Total
	No.	%	No.	%	No.	%	No.	%	No.	%	No.	%	No.	%	No.	%	No.	%	No.	%	No.
Elementary	245	0.3%	14,429	17.2%	8,795	10.5%	36	0.0%	14,300	17.0%	5,193	6.2%	387	0.5%	40,729	48.4%	40,380	48.0%	43,734	52.0%	84,114
Middle	95	0.4%	4,581	17.7%	2,897	11.2%	2	0.0%	4,012	15.5%	1,190	4.6%	46	0.2%	13,048	50.4%	12,425	48.0%	13,446	52.0%	25,871
High	141	0.3%	9,199	18.1%	5,435	10.7%	17	0.0%	6,794	13.3%	1,629	3.2%	129	0.3%	27,564	54.1%	24,751	48.6%	26,157	51.4%	50,908
Special Ed. Centers	3	0.4%	55	8.0%	147	21.4%	0	0.0%	99	14.4%	26	3.8%	4	0.6%	352	51.3%	205	29.9%	481	70.1%	686
Alternative Education	5	0.3%	252	12.9%	329	16.8%	1	0.1%	964	49.3%	31	1.6%	4	0.2%	369	18.9%	856	43.8%	1,099	56.2%	1,955
County Totals	489	0.3%	28,516	17.4%	17,603	10.8%	56	0.0%	26,169	16.0%	8,069	4.9%	570	0.3%	82,062	50.2%	78,617	48.1%	84,917	51.9%	163,534

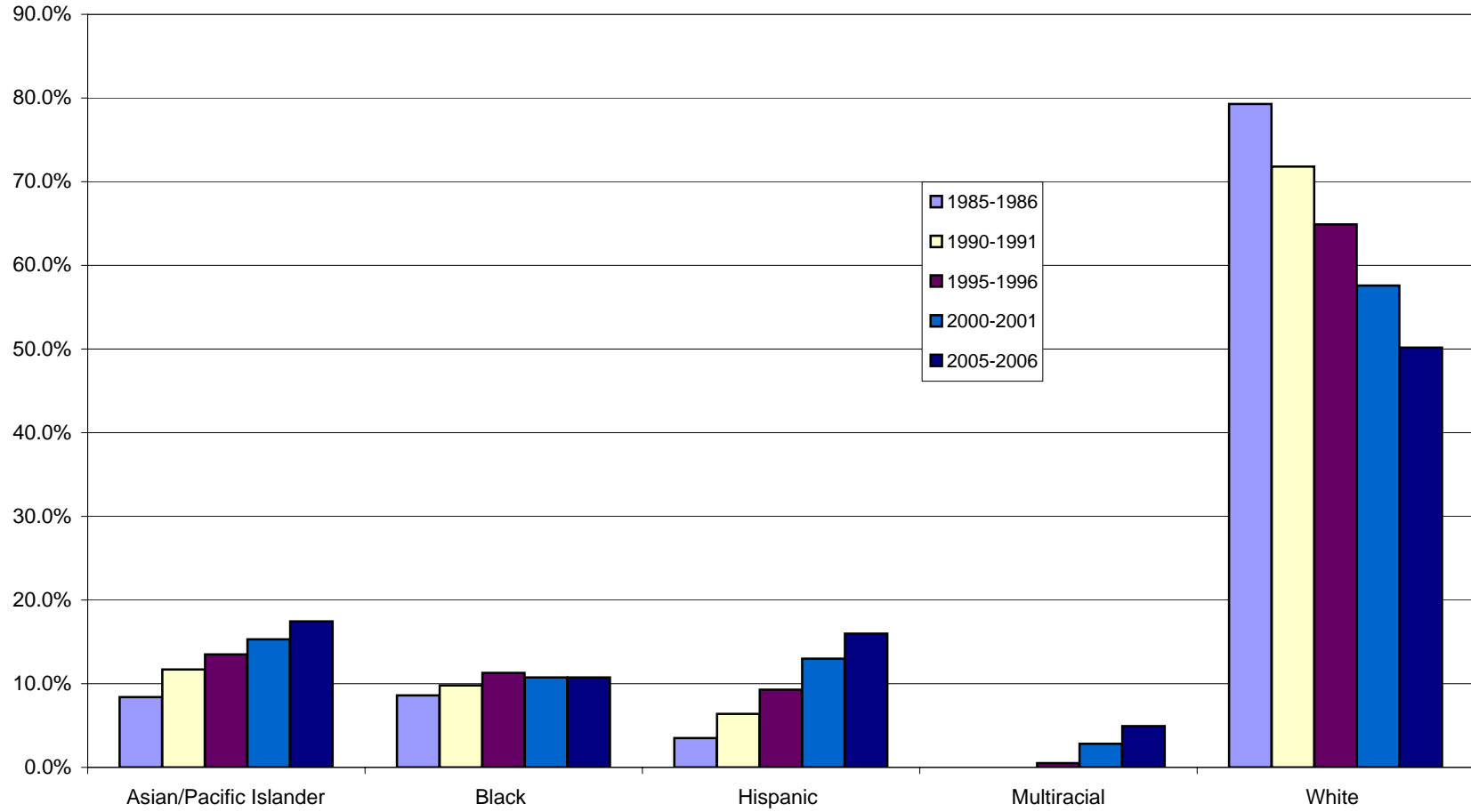
- Table II displays the number and percentage of students in each ethnic category for the past twenty-one year period using five-year intervals. Please refer to Figure 1 for a graphical representation of this data and Table IV for the percentage change for each ethnic group.

TABLE II

1985 TO 2005 ETHNIC MEMBERSHIP AT FIVE-YEAR INTERVALS

	Amer. Indian/ Alaskan		Asian/Pacific Islander		Black		Hawaiian		Hispanic		Multiracial		Undesignated		White		Total
1985-1986	210	0.2%	10,625	8.4%	10,824	8.6%	-	-	4,358	3.5%	-	-	40	0.0%	99,873	79.3%	125,930
1990-1991	335	0.3%	15,167	11.7%	12,760	9.8%	-	-	8,280	6.4%	-	-	94	0.1%	93,171	71.8%	129,807
1995-1996	345	0.2%	19,218	13.5%	16,047	11.3%	-	-	13,305	9.3%	762	0.5%	257	0.2%	92,429	64.9%	142,363
2000-2001	558	0.4%	24,193	15.3%	16,951	10.7%	-	-	20,538	13.0%	4,450	2.8%	278	0.2%	90,959	57.6%	157,927
2005-2006	489	0.3%	28,516	17.4%	17,603	10.8%	56	0.0%	26,169	16.0%	8,069	4.9%	570	0.3%	82,062	50.2%	163,534

FIGURE I
FCPS 1985-2005 ETHNIC DISTRIBUTION AT FIVE-YEAR INTERVALS



FAIRFAX COUNTY PUBLIC SCHOOLS
STUDENT MEMBERSHIP BY
ETHNIC GROUP AND GENDER
SEPTEMBER 2005

	AMER INDIAN/ ALASKAN		ASIAN/PACIFIC ISLANDER		BLACK		HAWAIIAN		HISPANIC		MULTIRACIAL		UNDESIGNATED		WHITE		FEMALE		MALE		TOTAL
	No.	Percent	No.	Percent	No.	Percent	No.	Percent	No.	Percent	No.	Percent	No.	Percent	No.	Percent	No.	Percent	No.	Percent	
Aldrin	2	0.4%	89	16.0%	48	8.6%	1	0.2%	37	6.7%	45	8.1%	5	0.9%	328	59.1%	266	47.9%	289	52.1%	555
Annandale Terrace	2	0.3%	192	28.6%	86	12.8%	0	0.0%	269	40.1%	21	3.1%	0	0.0%	101	15.1%	358	53.4%	313	46.6%	671
Archer	2	0.3%	115	16.7%	25	3.6%	0	0.0%	32	4.7%	50	7.3%	18	2.6%	446	64.8%	332	48.3%	356	51.7%	688
Armstrong	0	0.0%	27	6.3%	30	7.0%	0	0.0%	26	6.1%	28	6.5%	0	0.0%	317	74.1%	195	45.6%	233	54.4%	428
Baileys	1	0.1%	122	13.7%	47	5.3%	1	0.1%	450	50.6%	55	6.2%	0	0.0%	213	24.0%	446	50.2%	443	49.8%	889
Beech Tree	1	0.2%	95	21.2%	32	7.1%	0	0.0%	186	41.5%	24	5.4%	1	0.2%	109	24.3%	226	50.4%	222	49.6%	448
Belle View	4	1.0%	29	7.0%	59	14.2%	0	0.0%	91	21.9%	31	7.5%	3	0.7%	198	47.7%	175	42.2%	240	57.8%	415
Belvedere	2	0.4%	59	12.6%	36	7.7%	0	0.0%	181	38.7%	19	4.1%	7	1.5%	164	35.0%	210	44.9%	258	55.1%	468
Bonnie Brae	0	0.0%	165	21.0%	55	7.0%	1	0.1%	101	12.9%	76	9.7%	0	0.0%	387	49.3%	372	47.4%	413	52.6%	785
Braddock	1	0.2%	197	32.0%	34	5.5%	0	0.0%	248	40.3%	26	4.2%	2	0.3%	107	17.4%	300	48.8%	315	51.2%	615
Bren Mar Park	1	0.3%	83	21.8%	75	19.7%	0	0.0%	133	34.9%	16	4.2%	2	0.5%	71	18.6%	198	52.0%	183	48.0%	381
Brookfield	8	0.9%	204	24.1%	118	13.9%	1	0.1%	196	23.1%	26	3.1%	1	0.1%	293	34.6%	400	47.2%	447	52.8%	847
Bryant Headstart	0	0.0%	7	21.2%	3	9.1%	0	0.0%	19	57.6%	0	0.0%	1	3.0%	3	9.1%	18	54.5%	15	45.5%	33
Bucknell	2	0.7%	15	5.2%	70	24.5%	0	0.0%	155	54.2%	10	3.5%	0	0.0%	34	11.9%	144	50.3%	142	49.7%	286
Bull Run	3	0.3%	230	23.9%	122	12.7%	0	0.0%	107	11.1%	55	5.7%	1	0.1%	443	46.1%	441	45.9%	520	54.1%	961
Bush Hill	2	0.4%	83	18.4%	77	17.1%	0	0.0%	52	11.6%	22	4.9%	0	0.0%	214	47.6%	198	44.0%	252	56.0%	450
Camelot	0	0.0%	71	15.2%	53	11.3%	0	0.0%	120	25.7%	31	6.6%	1	0.2%	191	40.9%	232	49.7%	235	50.3%	467
Cameron	2	0.3%	36	6.1%	155	26.3%	0	0.0%	256	43.5%	33	5.6%	0	0.0%	107	18.2%	295	50.1%	294	49.9%	589
Canterbury Woods	2	0.3%	141	19.8%	19	2.7%	0	0.0%	45	6.3%	41	5.8%	0	0.0%	464	65.2%	343	48.2%	369	51.8%	712
Cardinal Forest	0	0.0%	120	18.9%	51	8.0%	0	0.0%	103	16.2%	38	6.0%	2	0.3%	322	50.6%	291	45.8%	345	54.2%	636
Centre Ridge	1	0.1%	238	26.6%	120	13.4%	0	0.0%	186	20.8%	68	7.6%	3	0.3%	279	31.2%	436	48.7%	459	51.3%	895
Centreville	3	0.3%	241	27.1%	115	12.9%	1	0.1%	106	11.9%	43	4.8%	2	0.2%	379	42.6%	437	49.1%	453	50.9%	890
Cherry Run	3	0.6%	69	14.4%	24	5.0%	0	0.0%	28	5.8%	34	7.1%	0	0.0%	321	67.0%	239	49.9%	240	50.1%	479
Chesterbrook	2	0.4%	40	7.6%	4	0.8%	0	0.0%	16	3.0%	42	7.9%	2	0.4%	423	80.0%	273	51.6%	256	48.4%	529
Churchill Road	0	0.0%	139	19.3%	7	1.0%	0	0.0%	14	1.9%	38	5.3%	1	0.1%	523	72.4%	350	48.5%	372	51.5%	722
Clearview	1	0.2%	72	13.0%	39	7.1%	1	0.2%	158	28.6%	27	4.9%	1	0.2%	253	45.8%	227	41.1%	325	58.9%	552
Clermont	1	0.3%	36	9.5%	24	6.3%	0	0.0%	59	15.5%	26	6.8%	2	0.5%	232	61.1%	184	48.4%	196	51.6%	380
Clifton	3	0.8%	24	6.1%	4	1.0%	1	0.3%	10	2.5%	25	6.3%	8	2.0%	319	81.0%	183	46.4%	211	53.6%	394
Columbia	1	0.3%	72	20.2%	65	18.2%	0	0.0%	53	14.8%	33	9.2%	0	0.0%	133	37.3%	181	50.7%	176	49.3%	357
Colvin Run	3	0.3%	132	14.9%	15	1.7%	0	0.0%	20	2.3%	54	6.1%	0	0.0%	663	74.7%	406	45.8%	481	54.2%	887
Crestwood	0	0.0%	97	20.4%	14	2.9%	0	0.0%	252	53.1%	20	4.2%	5	1.1%	87	18.3%	237	49.9%	238	50.1%	475
Crossfield	3	0.4%	98	12.8%	17	2.2%	0	0.0%	20	2.6%	30	3.9%	1	0.1%	597	77.9%	371	48.4%	395	51.6%	766
Cub Run	0	0.0%	96	17.3%	43	7.7%	1	0.2%	48	8.6%	35	6.3%	0	0.0%	333	59.9%	260	46.8%	296	53.2%	556
Cunningham Park	0	0.0%	40	11.7%	11	3.2%	0	0.0%	64	18.7%	20	5.8%	1	0.3%	206	60.2%	150	43.9%	192	56.1%	342
Daniels Run	4	0.5%	119	15.5%	57	7.4%	1	0.1%	154	20.1%	67	8.7%	11	1.4%	354	46.2%	395	51.5%	372	48.5%	767
Deer Park	0	0.0%	126	17.1%	41	5.6%	0	0.0%	64	8.7%	43	5.8%	12	1.6%	450	61.1%	359	48.8%	377	51.2%	736
Dogwood	0	0.0%	70	11.0%	123	19.3%	0	0.0%	323	50.6%	16	2.5%	0	0.0%	106	16.6%	312	48.9%	326	51.1%	638
Dranesville	6	0.8%	96	12.9%	55	7.4%	0	0.0%	136	18.3%	48	6.5%	3	0.4%	398	53.6%	354	47.7%	388	52.3%	742

FAIRFAX COUNTY PUBLIC SCHOOLS
 STUDENT MEMBERSHIP BY
 ETHNIC GROUP AND GENDER
 SEPTEMBER 2005

	AMER INDIAN/ ALASKAN		ASIAN/PACIFIC ISLANDER		BLACK		HAWAIIAN		HISPANIC		MULTIRACIAL		UNDESIGNATED		WHITE		FEMALE		MALE		TOTAL
Fairfax Villa	1	0.3%	95	24.3%	32	8.2%	0	0.0%	44	11.3%	22	5.6%	1	0.3%	196	50.1%	196	50.1%	195	49.9%	391
Fairhill	0	0.0%	185	37.4%	26	5.3%	0	0.0%	63	12.7%	42	8.5%	2	0.4%	177	35.8%	224	45.3%	271	54.7%	495
Fairview	1	0.2%	87	14.9%	22	3.8%	0	0.0%	34	5.8%	26	4.5%	2	0.3%	411	70.5%	287	49.2%	296	50.8%	583
Flint Hill	3	0.4%	60	8.6%	17	2.4%	1	0.1%	30	4.3%	47	6.7%	1	0.1%	542	77.3%	336	47.9%	365	52.1%	701
Floris	0	0.0%	294	35.6%	40	4.8%	0	0.0%	25	3.0%	43	5.2%	0	0.0%	424	51.3%	378	45.8%	448	54.2%	826
Forest Edge	1	0.1%	169	22.3%	103	13.6%	0	0.0%	97	12.8%	48	6.3%	4	0.5%	337	44.4%	347	45.7%	412	54.3%	759
Forestdale	0	0.0%	141	32.8%	64	14.9%	0	0.0%	113	26.3%	15	3.5%	0	0.0%	97	22.6%	221	51.4%	209	48.6%	430
Forestville	3	0.4%	92	12.1%	8	1.1%	0	0.0%	23	3.0%	36	4.7%	0	0.0%	599	78.7%	381	50.1%	380	49.9%	761
Fort Belvoir	12	1.0%	20	1.6%	363	28.9%	5	0.4%	113	9.0%	152	12.1%	2	0.2%	591	47.0%	605	48.1%	653	51.9%	1258
Fort Hunt	2	0.4%	26	4.6%	87	15.4%	0	0.0%	57	10.1%	57	10.1%	1	0.2%	335	59.3%	298	52.7%	267	47.3%	565
Fox Mill	0	0.0%	137	18.3%	17	2.3%	0	0.0%	29	3.9%	75	10.0%	1	0.1%	491	65.5%	367	48.9%	383	51.1%	750
Franconia	2	0.4%	99	20.6%	81	16.8%	0	0.0%	81	16.8%	31	6.4%	0	0.0%	187	38.9%	232	48.2%	249	51.8%	481
Freedom Hill	0	0.0%	118	24.1%	20	4.1%	0	0.0%	107	21.8%	40	8.2%	2	0.4%	203	41.4%	223	45.5%	267	54.5%	490
Garfield	0	0.0%	143	40.9%	31	8.9%	0	0.0%	62	17.7%	13	3.7%	1	0.3%	100	28.6%	173	49.4%	177	50.6%	350
Glen Forest	2	0.3%	107	14.0%	149	19.4%	0	0.0%	299	39.0%	25	3.3%	4	0.5%	181	23.6%	349	45.5%	418	54.5%	767
Graham Road	0	0.0%	52	15.2%	41	12.0%	0	0.0%	212	62.0%	5	1.5%	0	0.0%	32	9.4%	169	49.4%	173	50.6%	342
Great Falls	3	0.5%	44	7.6%	6	1.0%	0	0.0%	17	2.9%	40	6.9%	0	0.0%	471	81.1%	280	48.2%	301	51.8%	581
Greenbriar East	0	0.0%	206	26.5%	120	15.5%	0	0.0%	87	11.2%	54	7.0%	4	0.5%	305	39.3%	398	51.3%	378	48.7%	776
Greenbriar West	5	0.7%	272	36.0%	34	4.5%	0	0.0%	29	3.8%	56	7.4%	7	0.9%	352	46.6%	379	50.2%	376	49.8%	755
Groveton	3	0.6%	79	15.2%	155	29.8%	2	0.4%	159	30.6%	30	5.8%	1	0.2%	91	17.5%	250	48.1%	270	51.9%	520
Gunston	0	0.0%	77	13.5%	146	25.5%	0	0.0%	123	21.5%	37	6.5%	0	0.0%	189	33.0%	254	44.4%	318	55.6%	572
Halley	0	0.0%	88	15.0%	100	17.1%	0	0.0%	77	13.2%	34	5.8%	0	0.0%	286	48.9%	288	49.2%	297	50.8%	585
Haycock	0	0.0%	86	13.0%	10	1.5%	1	0.2%	35	5.3%	53	8.0%	2	0.3%	477	71.8%	305	45.9%	359	54.1%	664
Hayfield	2	0.3%	69	11.8%	102	17.4%	2	0.3%	32	5.5%	60	10.3%	2	0.3%	316	54.0%	289	49.4%	296	50.6%	585
Herndon	1	0.1%	111	15.3%	62	8.6%	0	0.0%	206	28.5%	45	6.2%	0	0.0%	299	41.3%	353	48.8%	371	51.2%	724
Hollin Meadows	0	0.0%	61	10.9%	211	37.8%	1	0.2%	98	17.6%	30	5.4%	3	0.5%	154	27.6%	255	45.7%	303	54.3%	558
Hunt Valley	1	0.2%	80	13.0%	46	7.5%	1	0.2%	41	6.7%	43	7.0%	2	0.3%	401	65.2%	310	50.4%	305	49.6%	615
Hunters Woods	1	0.1%	225	22.4%	125	12.4%	0	0.0%	51	5.1%	83	8.3%	0	0.0%	521	51.8%	516	51.3%	490	48.7%	1006
Hutchison	0	0.0%	111	19.1%	66	11.3%	0	0.0%	278	47.8%	24	4.1%	6	1.0%	97	16.7%	271	46.6%	311	53.4%	582
Hybla Valley	0	0.0%	30	4.5%	159	23.7%	0	0.0%	441	65.7%	22	3.3%	0	0.0%	19	2.8%	342	51.0%	329	49.0%	671
Island Creek	4	0.6%	88	12.3%	136	19.1%	0	0.0%	66	9.3%	63	8.8%	7	1.0%	349	48.9%	322	45.2%	391	54.8%	713
Keene Mill	5	0.9%	131	23.2%	32	5.7%	1	0.2%	99	17.5%	38	6.7%	1	0.2%	258	45.7%	278	49.2%	287	50.8%	565
Kent Gardens	0	0.0%	155	16.6%	20	2.1%	2	0.2%	49	5.2%	58	6.2%	1	0.1%	650	69.5%	483	51.7%	452	48.3%	935
Kings Glen	1	0.2%	88	17.6%	31	6.2%	0	0.0%	107	21.4%	23	4.6%	0	0.0%	250	50.0%	255	51.0%	245	49.0%	500
Kings Park	2	0.3%	116	17.1%	33	4.9%	1	0.1%	123	18.2%	51	7.5%	0	0.0%	351	51.8%	302	44.6%	375	55.4%	677
Lake Anne	2	0.3%	57	9.8%	125	21.6%	0	0.0%	121	20.9%	57	9.8%	2	0.3%	215	37.1%	280	48.4%	299	51.6%	579
Lane	4	0.6%	121	17.7%	144	21.1%	0	0.0%	82	12.0%	66	9.7%	17	2.5%	249	36.5%	332	48.6%	351	51.4%	683
Laurel Ridge	3	0.4%	91	11.0%	42	5.1%	0	0.0%	92	11.1%	75	9.0%	15	1.8%	513	61.7%	399	48.0%	432	52.0%	831
Lees Corner	1	0.1%	181	26.6%	26	3.8%	0	0.0%	51	7.5%	24	3.5%	0	0.0%	398	58.4%	325	47.7%	356	52.3%	681

FAIRFAX COUNTY PUBLIC SCHOOLS
STUDENT MEMBERSHIP BY
ETHNIC GROUP AND GENDER
SEPTEMBER 2005

	AMER INDIAN/ ALASKAN		ASIAN/PACIFIC ISLANDER		BLACK		HAWAIIAN		HISPANIC		MULTIRACIAL		UNDESIGNATED		WHITE		FEMALE		MALE		TOTAL
Lemon Road	2	0.7%	58	20.1%	16	5.5%	0	0.0%	79	27.3%	11	3.8%	4	1.4%	119	41.2%	129	44.6%	160	55.4%	289
Little Run	2	0.5%	70	18.2%	22	5.7%	0	0.0%	77	20.1%	21	5.5%	1	0.3%	191	49.7%	181	47.1%	203	52.9%	384
London Towne	5	0.6%	97	12.5%	110	14.1%	0	0.0%	263	33.8%	71	9.1%	2	0.3%	230	29.6%	384	49.4%	394	50.6%	778
Lorton Station	0	0.0%	183	18.6%	291	29.6%	1	0.1%	146	14.8%	57	5.8%	2	0.2%	304	30.9%	476	48.4%	508	51.6%	984
Lynbrook	0	0.0%	65	15.8%	41	10.0%	0	0.0%	239	58.2%	12	2.9%	0	0.0%	54	13.1%	192	46.7%	219	53.3%	411
Mantua	3	0.3%	194	22.3%	28	3.2%	0	0.0%	60	6.9%	42	4.8%	0	0.0%	543	62.4%	402	46.2%	468	53.8%	870
Marshall Road	2	0.4%	122	22.8%	24	4.5%	0	0.0%	34	6.3%	38	7.1%	4	0.7%	312	58.2%	237	44.2%	299	55.8%	536
McNair	5	0.6%	207	24.6%	152	18.1%	0	0.0%	252	30.0%	67	8.0%	4	0.5%	153	18.2%	398	47.4%	442	52.6%	840
Mosby Woods	0	0.0%	163	26.7%	85	13.9%	0	0.0%	107	17.5%	45	7.4%	1	0.2%	209	34.3%	314	51.5%	296	48.5%	610
Mount Eagle	2	0.6%	30	9.3%	89	27.6%	0	0.0%	176	54.5%	6	1.9%	1	0.3%	19	5.9%	158	48.9%	165	51.1%	323
Mount Vernon Woods	0	0.0%	31	6.1%	163	32.1%	0	0.0%	288	56.7%	12	2.4%	0	0.0%	14	2.8%	239	47.0%	269	53.0%	508
Navy	0	0.0%	153	19.4%	30	3.8%	0	0.0%	20	2.5%	48	6.1%	0	0.0%	536	68.1%	351	44.6%	436	55.4%	787
Newington Forest	2	0.3%	71	11.3%	90	14.3%	0	0.0%	76	12.1%	68	10.8%	0	0.0%	322	51.2%	273	43.4%	356	56.6%	629
North Springfield	1	0.2%	104	21.1%	43	8.7%	1	0.2%	121	24.5%	35	7.1%	3	0.6%	186	37.7%	223	45.1%	271	54.9%	494
Oak Hill	4	0.4%	309	32.1%	40	4.1%	0	0.0%	37	3.8%	38	3.9%	1	0.1%	535	55.5%	461	47.8%	503	52.2%	964
Oak View	0	0.0%	103	14.1%	40	5.5%	0	0.0%	51	7.0%	55	7.5%	2	0.3%	479	65.6%	341	46.7%	389	53.3%	730
Oakton	0	0.0%	100	16.1%	24	3.9%	0	0.0%	35	5.6%	34	5.5%	1	0.2%	429	68.9%	287	46.1%	336	53.9%	623
Olde Creek	1	0.3%	71	18.9%	27	7.2%	0	0.0%	47	12.5%	15	4.0%	1	0.3%	213	56.8%	177	47.2%	198	52.8%	375
Orange Hunt	4	0.5%	85	9.6%	39	4.4%	0	0.0%	30	3.4%	63	7.1%	0	0.0%	663	75.0%	450	50.9%	434	49.1%	884
Parklawn	2	0.3%	89	14.3%	171	27.5%	0	0.0%	249	40.0%	16	2.6%	0	0.0%	95	15.3%	311	50.0%	311	50.0%	622
Pine Spring	1	0.2%	86	18.9%	35	7.7%	0	0.0%	187	41.1%	29	6.4%	6	1.3%	111	24.4%	217	47.7%	238	52.3%	455
Poplar Tree	12	1.5%	146	18.6%	24	3.0%	0	0.0%	75	9.5%	52	6.6%	2	0.3%	476	60.5%	374	47.5%	413	52.5%	787
Powell	1	0.1%	428	46.2%	73	7.9%	0	0.0%	52	5.6%	50	5.4%	34	3.7%	288	31.1%	417	45.0%	509	55.0%	926
Providence	2	0.3%	135	17.7%	42	5.5%	0	0.0%	199	26.1%	50	6.6%	4	0.5%	331	43.4%	378	49.5%	385	50.5%	763
Ravensworth	7	1.2%	78	13.9%	14	2.5%	0	0.0%	76	13.5%	53	9.4%	1	0.2%	334	59.3%	276	49.0%	287	51.0%	563
Riverside	1	0.2%	42	8.6%	190	39.0%	0	0.0%	147	30.2%	18	3.7%	0	0.0%	89	18.3%	252	51.7%	235	48.3%	487
Rolling Valley	1	0.2%	106	21.3%	61	12.2%	1	0.2%	44	8.8%	50	10.0%	3	0.6%	232	46.6%	245	49.2%	253	50.8%	498
Rose Hill	1	0.1%	64	8.4%	106	13.9%	0	0.0%	294	38.5%	50	6.6%	0	0.0%	248	32.5%	361	47.3%	402	52.7%	763
Sangster	1	0.1%	74	9.8%	23	3.0%	0	0.0%	36	4.8%	43	5.7%	12	1.6%	567	75.0%	355	47.0%	401	53.0%	756
Saratoga	7	0.9%	130	16.8%	163	21.1%	0	0.0%	137	17.7%	46	6.0%	0	0.0%	290	37.5%	373	48.3%	400	51.7%	773
Sherman	0	0.0%	61	16.4%	11	2.9%	0	0.0%	13	3.5%	17	4.6%	0	0.0%	271	72.7%	189	50.7%	184	49.3%	373
Shrevewood	0	0.0%	118	28.9%	32	7.8%	0	0.0%	69	16.9%	29	7.1%	5	1.2%	155	38.0%	194	47.5%	214	52.5%	408
Silverbrook	11	1.0%	208	18.7%	97	8.7%	1	0.1%	37	3.3%	58	5.2%	29	2.6%	672	60.4%	548	49.2%	565	50.8%	1113
Sleepy Hollow	1	0.3%	35	9.7%	14	3.9%	0	0.0%	128	35.5%	17	4.7%	0	0.0%	166	46.0%	178	49.3%	183	50.7%	361
Spring Hill	2	0.2%	160	18.9%	17	2.0%	0	0.0%	29	3.4%	43	5.1%	0	0.0%	595	70.3%	424	50.1%	422	49.9%	846
Springfield Estates	5	0.8%	143	23.7%	95	15.8%	0	0.0%	117	19.4%	34	5.6%	18	3.0%	191	31.7%	278	46.1%	325	53.9%	603
Stenwood	2	0.5%	76	18.7%	35	8.6%	0	0.0%	20	4.9%	23	5.7%	0	0.0%	250	61.6%	192	47.3%	214	52.7%	406
Stratford Landing	5	0.7%	35	5.0%	107	15.3%	0	0.0%	34	4.9%	39	5.6%	13	1.9%	467	66.7%	319	45.6%	381	54.4%	700
Sunrise Valley	1	0.2%	83	16.6%	18	3.6%	0	0.0%	29	5.8%	32	6.4%	1	0.2%	336	67.2%	281	56.2%	219	43.8%	500

FAIRFAX COUNTY PUBLIC SCHOOLS
STUDENT MEMBERSHIP BY
ETHNIC GROUP AND GENDER
SEPTEMBER 2005

	AMER INDIAN/ ALASKAN		ASIAN/PACIFIC ISLANDER		BLACK		HAWAIIAN		HISPANIC		MULTIRACIAL		UNDESIGNATED		WHITE		FEMALE		MALE		TOTAL
Terra-Centre	0	0.0%	79	14.4%	26	4.8%	0	0.0%	81	14.8%	52	9.5%	0	0.0%	309	56.5%	248	45.3%	299	54.7%	547
Terraset	1	0.3%	27	6.8%	93	23.3%	0	0.0%	86	21.6%	24	6.0%	1	0.3%	167	41.9%	188	47.1%	211	52.9%	399
Timber Lane	1	0.2%	91	19.6%	48	10.3%	0	0.0%	209	45.0%	24	5.2%	0	0.0%	91	19.6%	215	46.3%	249	53.7%	464
Union Mill	2	0.2%	116	13.6%	19	2.2%	2	0.2%	22	2.6%	36	4.2%	5	0.6%	651	76.3%	416	48.8%	437	51.2%	853
Vienna	0	0.0%	51	14.0%	11	3.0%	0	0.0%	25	6.9%	20	5.5%	12	3.3%	245	67.3%	179	49.2%	185	50.8%	364
Virginia Run	0	0.0%	93	10.6%	17	1.9%	0	0.0%	42	4.8%	31	3.5%	3	0.3%	689	78.7%	403	46.1%	472	53.9%	875
Wakefield Forest	0	0.0%	35	7.8%	9	2.0%	0	0.0%	23	5.1%	37	8.2%	0	0.0%	345	76.8%	213	47.4%	236	52.6%	449
Waples Mill	6	0.7%	144	16.9%	24	2.8%	0	0.0%	40	4.7%	44	5.2%	1	0.1%	594	69.6%	420	49.2%	433	50.8%	853
Washington Mill	0	0.0%	47	9.1%	150	28.9%	3	0.6%	122	23.5%	26	5.0%	0	0.0%	171	32.9%	221	42.6%	298	57.4%	519
Waynewood	1	0.2%	10	1.6%	4	0.6%	0	0.0%	13	2.1%	26	4.2%	2	0.3%	570	91.1%	288	46.0%	338	54.0%	626
West Springfield	0	0.0%	47	11.0%	33	7.7%	0	0.0%	22	5.2%	31	7.3%	1	0.2%	293	68.6%	198	46.4%	229	53.6%	427
Westbriar	0	0.0%	63	16.4%	6	1.6%	0	0.0%	19	4.9%	17	4.4%	2	0.5%	278	72.2%	188	48.8%	197	51.2%	385
Westgate	2	0.6%	63	19.4%	30	9.2%	0	0.0%	71	21.8%	25	7.7%	1	0.3%	133	40.9%	159	48.9%	166	51.1%	325
Westlawn	1	0.2%	137	24.4%	12	2.1%	0	0.0%	287	51.1%	20	3.6%	8	1.4%	97	17.3%	262	46.6%	300	53.4%	562
Weyanoke	0	0.0%	101	20.0%	165	32.7%	0	0.0%	158	31.3%	17	3.4%	4	0.8%	59	11.7%	234	46.4%	270	53.6%	504
White Oaks	1	0.1%	161	21.6%	52	7.0%	0	0.0%	104	14.0%	58	7.8%	0	0.0%	368	49.5%	357	48.0%	387	52.0%	744
Willow Springs	1	0.1%	187	25.0%	25	3.3%	0	0.0%	34	4.5%	42	5.6%	0	0.0%	459	61.4%	357	47.7%	391	52.3%	748
Wolftrap	2	0.3%	39	6.5%	4	0.7%	0	0.0%	7	1.2%	29	4.9%	1	0.2%	515	86.3%	295	49.4%	302	50.6%	597
Woodburn	0	0.0%	90	23.5%	56	14.6%	0	0.0%	77	20.1%	19	5.0%	4	1.0%	137	35.8%	182	47.5%	201	52.5%	383
Woodlawn	0	0.0%	35	7.4%	181	38.4%	1	0.2%	156	33.1%	32	6.8%	0	0.0%	66	14.0%	208	44.2%	263	55.8%	471
Woodley Hills	0	0.0%	23	4.1%	143	25.6%	0	0.0%	221	39.5%	37	6.6%	0	0.0%	135	24.2%	268	47.9%	291	52.1%	559
ELEM TOTALS	245	0.3%	14,429	17.2%	8,795	10.5%	36	0.0%	14,300	17.0%	5,193	6.2%	387	0.5%	40,729	48.4%	40,380	48.0%	43,734	52.0%	84,114

FAIRFAX COUNTY PUBLIC SCHOOLS
STUDENT MEMBERSHIP BY
ETHNIC GROUP AND GENDER
SEPTEMBER 2005

	AMER INDIAN/ ALASKAN		ASIAN/PACIFIC ISLANDER		BLACK		HAWAIIAN		HISPANIC		MULTIRACIAL		UNDESIGNATED		WHITE		FEMALE		MALE		TOTAL
Carson	3	0.3%	261	24.2%	75	7.0%	0	0.0%	50	4.6%	52	4.8%	2	0.2%	635	58.9%	508	47.1%	570	52.9%	1078
Cooper	1	0.1%	133	13.8%	11	1.1%	0	0.0%	39	4.0%	42	4.3%	1	0.1%	739	76.5%	439	45.4%	527	54.6%	966
Franklin	6	0.6%	178	17.6%	54	5.4%	0	0.0%	57	5.6%	32	3.2%	1	0.1%	681	67.5%	477	47.3%	532	52.7%	1009
Frost	3	0.3%	235	21.1%	42	3.8%	0	0.0%	57	5.1%	52	4.7%	3	0.3%	724	64.9%	521	46.7%	595	53.3%	1116
Glasgow	1	0.1%	176	16.3%	127	11.8%	0	0.0%	457	42.4%	33	3.1%	6	0.6%	277	25.7%	551	51.2%	526	48.8%	1077
Hayfield	3	0.4%	102	13.4%	187	24.6%	0	0.0%	108	14.2%	52	6.9%	4	0.5%	303	39.9%	369	48.6%	390	51.4%	759
Herndon	4	0.4%	135	12.0%	130	11.6%	0	0.0%	240	21.4%	47	4.2%	1	0.1%	565	50.4%	497	44.3%	625	55.7%	1122
Holmes	1	0.1%	147	19.5%	159	21.1%	0	0.0%	190	25.2%	31	4.1%	1	0.1%	225	29.8%	346	45.9%	408	54.1%	754
Hughes	1	0.1%	98	11.2%	173	19.8%	0	0.0%	163	18.6%	54	6.2%	3	0.3%	383	43.8%	395	45.1%	480	54.9%	875
Irving	4	0.4%	163	15.1%	75	7.0%	0	0.0%	105	9.7%	66	6.1%	2	0.2%	663	61.5%	541	50.2%	537	49.8%	1078
Jackson	4	0.4%	229	25.0%	106	11.6%	0	0.0%	280	30.5%	36	3.9%	2	0.2%	260	28.4%	438	47.8%	479	52.2%	917
Key	3	0.4%	212	25.4%	128	15.3%	0	0.0%	214	25.6%	31	3.7%	0	0.0%	247	29.6%	405	48.5%	430	51.5%	835
Kilmer	3	0.3%	196	20.2%	44	4.5%	0	0.0%	98	10.1%	46	4.7%	1	0.1%	583	60.0%	482	49.6%	489	50.4%	971
Lake Braddock	5	0.4%	241	19.6%	69	5.6%	0	0.0%	164	13.4%	60	4.9%	2	0.2%	686	55.9%	584	47.6%	643	52.4%	1227
Lanier	4	0.4%	215	22.0%	83	8.5%	0	0.0%	138	14.1%	47	4.8%	2	0.2%	490	50.1%	452	46.2%	527	53.8%	979
Liberty	6	0.5%	305	26.8%	125	11.0%	0	0.0%	120	10.5%	46	4.0%	1	0.1%	535	47.0%	576	50.6%	562	49.4%	1138
Longfellow	6	0.6%	226	21.6%	27	2.6%	0	0.0%	69	6.6%	43	4.1%	0	0.0%	677	64.6%	488	46.6%	560	53.4%	1048
Poe	4	0.4%	262	23.5%	124	11.1%	1	0.1%	374	33.5%	33	3.0%	1	0.1%	317	28.4%	535	47.9%	581	52.1%	1116
Robinson	5	0.4%	219	17.0%	72	5.6%	0	0.0%	116	9.0%	66	5.1%	1	0.1%	810	62.8%	640	49.7%	649	50.3%	1289
Rocky Run	3	0.4%	193	24.4%	50	6.3%	0	0.0%	58	7.3%	37	4.7%	2	0.3%	447	56.6%	394	49.9%	396	50.1%	790
Sandburg	5	0.5%	80	7.4%	265	24.6%	1	0.1%	220	20.4%	46	4.3%	0	0.0%	461	42.8%	541	50.2%	537	49.8%	1078
South County	5	0.5%	158	15.3%	176	17.1%	0	0.0%	103	10.0%	52	5.0%	2	0.2%	536	51.9%	512	49.6%	520	50.4%	1032
Stone	3	0.3%	148	14.8%	63	6.3%	0	0.0%	109	10.9%	48	4.8%	1	0.1%	628	62.8%	495	49.5%	505	50.5%	1000
Thoreau	6	0.8%	74	10.2%	31	4.3%	0	0.0%	46	6.3%	29	4.0%	4	0.5%	538	73.9%	366	50.3%	362	49.7%	728
Twain	5	0.5%	134	14.0%	176	18.4%	0	0.0%	214	22.4%	54	5.6%	2	0.2%	371	38.8%	445	46.5%	511	53.5%	956
Whitman	1	0.1%	61	6.5%	325	34.8%	0	0.0%	223	23.9%	55	5.9%	1	0.1%	267	28.6%	428	45.9%	505	54.1%	933
MIDDLE TOTALS	95	0.4%	4,581	17.7%	2,897	11.2%	2	0.0%	4,012	15.5%	1,190	4.6%	46	0.2%	13,048	50.4%	12,425	48.0%	13,446	52.0%	25,871

FAIRFAX COUNTY PUBLIC SCHOOLS
STUDENT MEMBERSHIP BY
ETHNIC GROUP AND GENDER
SEPTEMBER 2005

	AMER INDIAN/ ALASKAN		ASIAN/PACIFIC ISLANDER		BLACK		HAWAIIAN		HISPANIC		MULTIRACIAL		UNDESIGNATED		WHITE		FEMALE		MALE		TOTAL
Annandale	6	0.3%	520	21.9%	383	16.1%	1	0.0%	641	27.0%	39	1.6%	6	0.3%	777	32.7%	1186	50.0%	1187	50.0%	2373
Centreville	5	0.2%	590	25.9%	247	10.9%	2	0.1%	236	10.4%	59	2.6%	0	0.0%	1136	49.9%	1092	48.0%	1183	52.0%	2275
Chantilly	9	0.3%	589	20.7%	179	6.3%	0	0.0%	197	6.9%	54	1.9%	7	0.2%	1806	63.6%	1399	49.2%	1442	50.8%	2841
Edison	13	0.7%	221	12.2%	364	20.1%	2	0.1%	420	23.2%	67	3.7%	2	0.1%	724	39.9%	891	49.1%	922	50.9%	1813
Fairfax	5	0.2%	515	24.9%	207	10.0%	2	0.1%	272	13.1%	61	2.9%	3	0.1%	1005	48.6%	1026	49.6%	1044	50.4%	2070
Falls Church	1	0.1%	313	22.2%	129	9.1%	0	0.0%	452	32.0%	40	2.8%	3	0.2%	474	33.6%	704	49.9%	708	50.1%	1412
Hayfield	6	0.4%	252	14.8%	357	21.0%	2	0.1%	230	13.5%	65	3.8%	22	1.3%	766	45.1%	774	45.5%	926	54.5%	1700
Herndon	9	0.4%	259	11.7%	217	9.8%	0	0.0%	396	17.8%	61	2.7%	3	0.1%	1276	57.5%	1069	48.1%	1152	51.9%	2221
Jefferson Sci/Tech	8	0.5%	586	33.7%	30	1.7%	0	0.0%	48	2.8%	81	4.7%	1	0.1%	984	56.6%	758	43.6%	980	56.4%	1738
Lake Braddock	13	0.5%	542	21.2%	145	5.7%	0	0.0%	282	11.0%	85	3.3%	7	0.3%	1487	58.1%	1228	48.0%	1333	52.0%	2561
Langley	3	0.2%	341	17.2%	41	2.1%	0	0.0%	42	2.1%	59	3.0%	3	0.2%	1494	75.3%	962	48.5%	1021	51.5%	1983
Lee	4	0.2%	498	25.1%	289	14.6%	2	0.1%	418	21.1%	49	2.5%	8	0.4%	714	36.0%	968	48.8%	1014	51.2%	1982
Madison	4	0.2%	215	11.4%	74	3.9%	0	0.0%	103	5.5%	64	3.4%	5	0.3%	1418	75.3%	913	48.5%	970	51.5%	1883
Marshall	3	0.2%	257	19.2%	111	8.3%	0	0.0%	176	13.1%	48	3.6%	1	0.1%	743	55.5%	643	48.0%	696	52.0%	1339
McLean	6	0.3%	337	19.0%	64	3.6%	0	0.0%	125	7.1%	58	3.3%	1	0.1%	1179	66.6%	867	49.0%	903	51.0%	1770
Mount Vernon	8	0.5%	111	6.3%	602	34.0%	1	0.1%	380	21.5%	88	5.0%	3	0.2%	576	32.6%	834	47.1%	935	52.9%	1769
Oakton	2	0.1%	386	16.6%	127	5.5%	0	0.0%	143	6.1%	77	3.3%	1	0.0%	1594	68.4%	1150	49.4%	1180	50.6%	2330
Robinson	4	0.1%	483	17.0%	171	6.0%	0	0.0%	245	8.6%	95	3.3%	18	0.6%	1824	64.2%	1383	48.7%	1457	51.3%	2840
South County	7	0.5%	236	16.5%	234	16.3%	0	0.0%	140	9.8%	57	4.0%	4	0.3%	754	52.7%	708	49.4%	724	50.6%	1432
South Lakes	4	0.3%	169	11.3%	300	20.1%	3	0.2%	240	16.1%	69	4.6%	6	0.4%	699	46.9%	733	49.2%	757	50.8%	1490
Stuart	2	0.1%	307	20.6%	154	10.3%	1	0.1%	612	41.0%	31	2.1%	7	0.5%	378	25.3%	686	46.0%	806	54.0%	1492
West Potomac	4	0.2%	173	8.4%	513	24.9%	0	0.0%	371	18.0%	54	2.6%	9	0.4%	937	45.5%	1053	51.1%	1008	48.9%	2061
West Springfield	4	0.2%	367	16.4%	155	6.9%	1	0.0%	219	9.8%	107	4.8%	0	0.0%	1384	61.9%	1114	49.8%	1123	50.2%	2237
Westfield	8	0.2%	515	16.0%	265	8.3%	0	0.0%	294	9.2%	104	3.2%	5	0.2%	2021	62.9%	1592	49.6%	1620	50.4%	3212
Woodson	3	0.1%	417	20.0%	77	3.7%	0	0.0%	112	5.4%	57	2.7%	4	0.2%	1414	67.9%	1018	48.8%	1066	51.2%	2084
HIGH TOTALS	141	0.3%	9,199	18.1%	5,435	10.7%	17	0.0%	6,794	13.3%	1,629	3.2%	129	0.3%	27,564	54.1%	24,751	48.6%	26,157	51.4%	50,908

FAIRFAX COUNTY PUBLIC SCHOOLS
STUDENT MEMBERSHIP BY
ETHNIC GROUP AND GENDER
SEPTEMBER 2005

	AMER INDIAN/ ALASKAN		ASIAN/PACIFIC ISLANDER		BLACK		HAWAIIAN		HISPANIC		MULTIRACIAL		UNDESIGNATED		WHITE		FEMALE		MALE		TOTAL
	No.	Percent	No.	Percent	No.	Percent	No.	Percent	No.	Percent	No.	Percent	No.	Percent	No.	Percent	No.	Percent	No.	Percent	
CENTERS																					
Brookfield	1	2.4%	1	2.4%	8	19.5%	0	0.0%	0	0.0%	5	12.2%		0.0%	26	63.4%	6	14.6%	35	85.4%	41
Camelot	0	0.0%	4	7.1%	8	14.3%	0	0.0%	13	23.2%	5	8.9%		0.0%	26	46.4%	32	57.1%	24	42.9%	56
Olde Creek	1	4.2%	0	0.0%	9	37.5%	0	0.0%	4	16.7%	1	4.2%		0.0%	9	37.5%	2	8.3%	22	91.7%	24
ELEM TOTALS	2	1.7%	5	4.1%	25	20.7%	0	0.0%	17	14.0%	11	9.1%		0.0%	61	50.4%	40	33.1%	81	66.9%	121
							0														
Burke	0	0.0%	2	3.3%	18	29.5%	0	0.0%	7	11.5%	2	3.3%	0	0.0%	32	52.5%	6	9.8%	55	90.2%	61
Key	1	1.0%	13	13.0%	29	29.0%	0	0.0%	19	19.0%	3	3.0%	1	1.0%	34	34.0%	38	38.0%	62	62.0%	100
Kilmer	0	0.0%	10	14.1%	9	12.7%	0	0.0%	11	15.5%	2	2.8%	2	2.8%	37	52.1%	26	36.6%	45	63.4%	71
MIDDLE TOTALS	1	0.4%	25	10.8%	56	24.1%	0	0.0%	37	15.9%	7	3.0%	3	1.3%	103	44.4%	70	30.2%	162	69.8%	232
							0														
Cedar Lane		0.0%	3	3.7%	24	29.6%	0	0.0%	9	11.1%	2	2.5%	0	0.0%	43	53.1%	24	29.6%	57	70.4%	81
Davis		0.0%	8	9.3%	11	12.8%	0	0.0%	11	12.8%	0	0.0%	1	1.2%	55	64.0%	29	33.7%	57	66.3%	86
Pulley		0.0%	12	15.6%	14	18.2%	0	0.0%	8	10.4%	3	3.9%	0	0.0%	40	51.9%	25	32.5%	52	67.5%	77
Quander Road		0.0%	2	2.2%	17	19.1%	0	0.0%	17	19.1%	3	3.4%	0	0.0%	50	56.2%	17	19.1%	72	80.9%	89
HIGH TOTALS		0.0%	25	7.5%	66	19.8%	0	0.0%	45	13.5%	8	2.4%	1	0.3%	188	56.5%	95	28.5%	238	71.5%	333
							0														
SPEC ED TOTALS	3	0.4%	55	8.0%	147	21.4%	0	0.0%	99	14.4%	26	3.8%	4	0.6%	352	51.3%	205	29.9%	481	70.1%	686

FAIRFAX COUNTY PUBLIC SCHOOLS
STUDENT MEMBERSHIP BY
ETHNIC GROUP AND GENDER
SEPTEMBER 2005

	AMER INDIAN/ ALASKAN		ASIAN/PACIFIC ISLANDER		BLACK		HAWAIIAN		HISPANIC		MULTIRACIAL		UNDESIGNATED		WHITE		FEMALE		MALE		TOTAL
	No.	Percent	No.	Percent	No.	Percent	No.	Percent	No.	Percent	No.	Percent	No.	Percent	No.	Percent	No.	Percent	No.	Percent	
ALT EDUCATION																					
ALC At Bryant	0	0.0%	2	5.6%	11	30.6%	0	0.0%	16	44.4%	3	8.3%	1	2.8%	3	8.3%	4	11.1%	32	88.9%	36
ALC At Burke	0	0.0%	0	0.0%	6	50.0%	0	0.0%	4	33.3%	0	0.0%	0	0.0%	2	16.7%	2	16.7%	10	83.3%	12
ALC At Dunn Loring	0	0.0%	3	11.1%	8	29.6%	0	0.0%	11	40.7%	1	3.7%	0	0.0%	4	14.8%	5	18.5%	22	81.5%	27
ALC At Eleven Oaks	0	0.0%	5	13.9%	7	19.4%	0	0.0%	14	38.9%	0	0.0%	1	2.8%	9	25.0%	10	27.8%	26	72.2%	36
Annandale Trans ESOL	0	0.0%	4	8.7%	11	23.9%	0	0.0%	30	65.2%	0	0.0%	0	0.0%	1	2.2%	25	54.3%	21	45.7%	46
Bryant Alternative High	1	0.3%	43	12.6%	95	27.9%	0	0.0%	157	46.2%	6	1.8%	0	0.0%	38	11.2%	194	57.1%	146	42.9%	340
Falls Church Trans ESOL	0	0.0%	5	6.8%	2	2.7%	0	0.0%	65	87.8%	1	1.4%	0	0.0%	1	1.4%	26	35.1%	48	64.9%	74
Interagency Alt Elem		0.0%		0.0%		0.0%		0.0%	1	33.3%		0.0%		0.0%	2	66.7%	2	66.7%	1	33.3%	3
Interagency Alt Sec	2	0.6%	22	7.1%	63	20.2%	0	0.0%	90	28.8%	14	4.5%	1	0.3%	120	38.5%	107	34.3%	205	65.7%	312
Landmark Career Academy	0	0.0%	2	16.7%	1	8.3%	0	0.0%	2	16.7%	0	0.0%	0	0.0%	7	58.3%	4	33.3%	8	66.7%	12
Lee Trans ESOL	0	0.0%	7	8.2%	8	9.4%	0	0.0%	68	80.0%	0	0.0%	0	0.0%	2	2.4%	45	52.9%	40	47.1%	85
Mountain View School	1	0.3%	49	16.9%	24	8.3%	0	0.0%	113	39.0%	5	1.7%	0	0.0%	98	33.8%	124	42.8%	166	57.2%	290
Pimmit Alternative High	0	0.0%	48	16.2%	45	15.2%	1	0.3%	170	57.2%	0	0.0%	1	0.3%	32	10.8%	128	43.1%	169	56.9%	297
South Lakes Trans ESOL	0	0.0%	0	0.0%	10	11.9%	0	0.0%	73	86.9%	0	0.0%	0	0.0%	1	1.2%	43	51.2%	41	48.8%	84
Woodson Adult Ed	1	0.3%	62	20.6%	38	12.6%	0	0.0%	150	49.8%	1	0.3%	0	0.0%	49	16.3%	137	45.5%	164	54.5%	301
ALT ED TOTALS	5	0.3%	252	12.9%	329	16.8%	1	0.1%	964	49.3%	31	1.6%	4	0.2%	369	18.9%	856	43.8%	1,099	56.2%	1,955