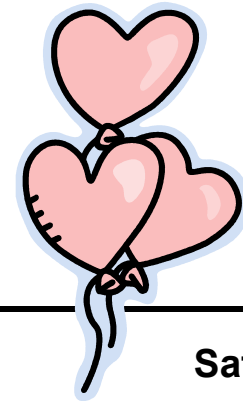


February 2009

National Black History Month



Sun	Mon	Tue	Wed	Thu	Fri	Sat
1	2 <i>After-School 2nd Semester Club Day</i>	3	4 <i>Spelling Bee 7—8 pm Lecture Hall</i>	5	6 <i>Movie Night at Poe 7—10 pm</i>	7 <i>Saturday School 9 am—12 noon</i>
8	9 <i>NAEP test for selected 8th graders (rescheduled from January 28th)</i>	10	11 <i>Spelling Bee 7—8 pm Lecture Hall Snow Date</i>	12 <i>Raven Day Valentine Dance 3:30—4:30 Pink/Red Spirit Day</i>	13 <i>4-hour early dismissal for Parent Mini Conferences 11:30 am dismissal</i>	14 <i>Valentine's Day</i>
15	16 <i>President's Day No School</i>	17 <i>Parent Open House for New Students to Poe next year 6:30 pm</i>	18	19	20	21 <i>Saturday School 9 am—12 noon</i>
22	23 <i>Honor Roll Assemblies Grade 7; 9 am Grade 8; 10:15 am Grade 6; 2 pm</i>	24	25	26 <i>Interims Sent Home</i>	27	28