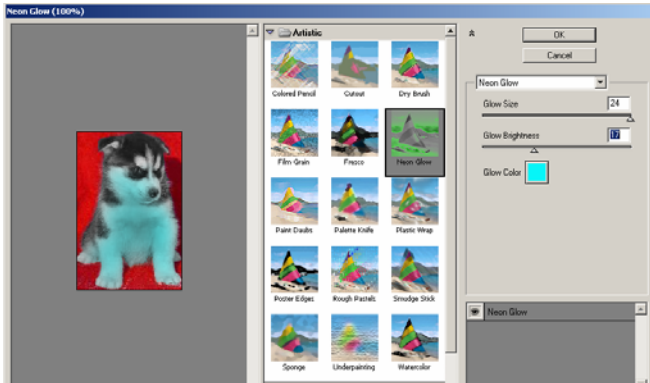


## How do I change the look of the filters?

Depending on what you set the level of each control as, one filter can change the appearance of a photo in many different ways.

When you select a filter, the screen shown below will come up. On the left panel is a preview of what the image will look like with the filter applied. In the middle, there is a list of all the filters that you can choose from. On the right panel, there are controls that you can change for a different look.



For example, the Neon Glow filter used above can make the image have a bright blue glow, a dark pink glow, or many other colors. You can experiment with each look by using the options in the right panel.

## What can I do to my photo with filters?

In this photo, we masked the entire dog's body:



Using the "Plastic Wrap" and "Halftone Pattern" filters, the image looked like this:



There is much more you can do with filters and effects in Adobe Photoshop. Have fun exploring what this software program has to offer!

## Adobe Photoshop: Masking & Filters

Tips & Techniques  
A Tutorial



*Prepared by*

**Laura Lyons**

Advanced Multimedia Productions  
Luther Jackson Middle School

## What does it mean to mask?

Before you do anything to a photo, you must first **open** the file.

- Open Adobe Photoshop.
- From the toolbar, select File, Open, and open the picture you want to alter.

### Masking is...

selecting an area of a photo on which alterations, or changes in appearance, can be made.

When masking, be sure to select the entire area that you want to alter or apply a filter to. If you missed a part, hold down **Shift** on the keyboard, and mask as usual.

You will know the photo has been masked when there is a light dotted line around the selected area.

## What do I use to mask a photo?



1. Rectangular/Basic Shapes  
- Use the rectangular marquee to select a square shaped area or a whole picture.

2. Lasso Tools  
- Freehand selects an area for masking. Right click for magnetic lasso, a very useful tool that 'sticks' to the edges of the object.



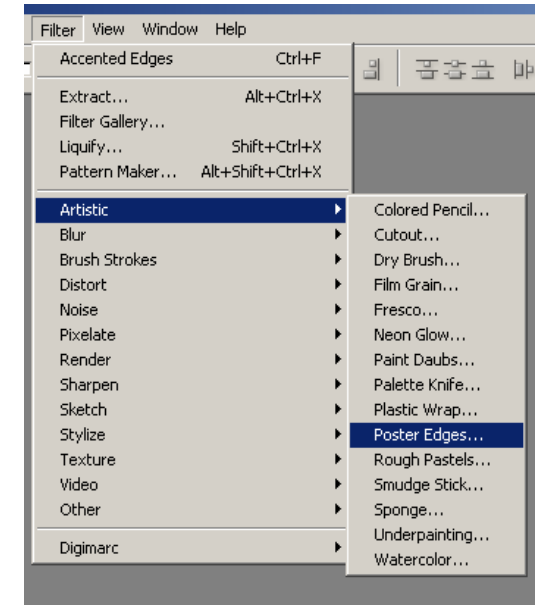
3. Magic Wand Tool  
- This tool selects all areas of a similar color. It's a useful tool when you want to select a larger area, like grass or a blue sky.

Now, you're ready to use a filter to **enhance** your photo!

## What are filters and how do I use them?

**Filters** are enhancing effects that you can apply to a selected or masked area, such as adding a neon glow to the photo.

You will find a variety of Filters by clicking on "Filter" on the toolbar at the top of the screen.



The "Filter" menu

The best way to find the right filter for your photo is just to experiment and have fun!