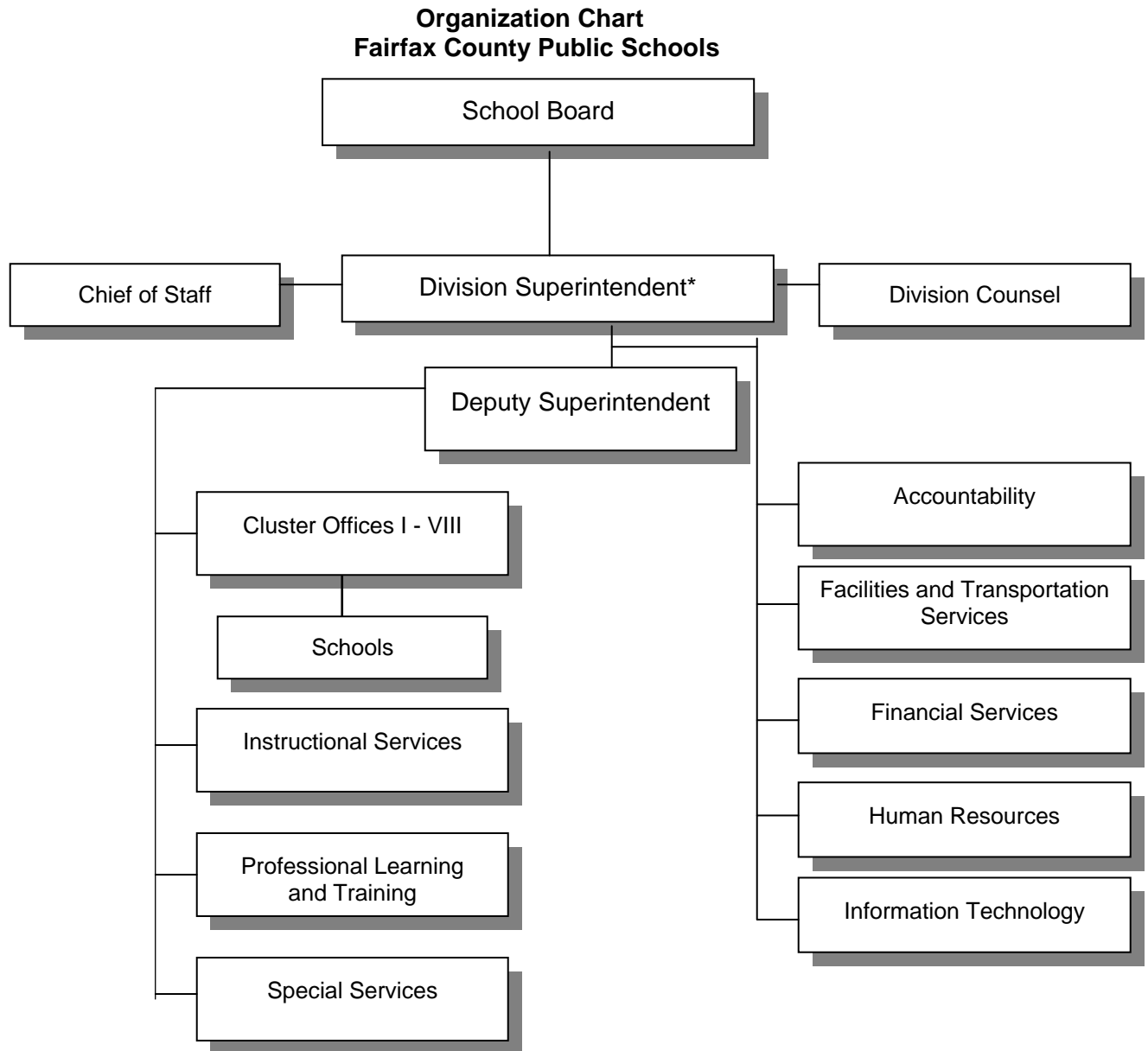


**ORGANIZATION, PHILOSOPHY, AND GOALS**

**Organizational Charts and Office Functions**

**Organization Chart for the School Division**

This policy supersedes Policy 1204.4.



\*The following offices report to the Superintendent's office: Business and Industry Relations, Community Relations, Government Relations, Hearings, Internal Audit, and Student Activities and Athletic Programs.

**Policy**

- Adopted: July 1, 1986
- Revised: December 16, 1993
- Revised: March 25, 1999
- Revised: June 13, 2003
- Revised: April 1, 2005
- Revised: June 21, 2007