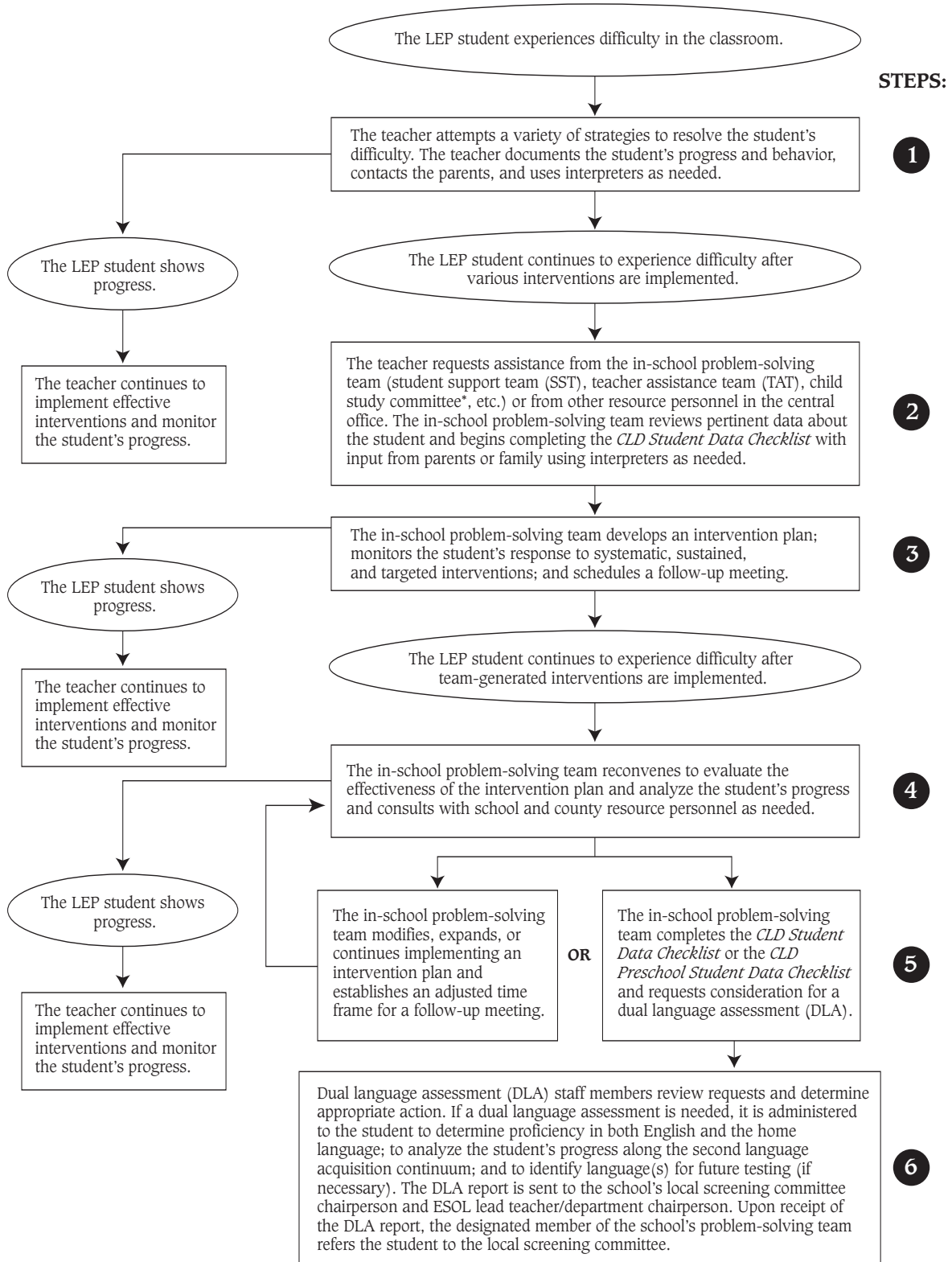
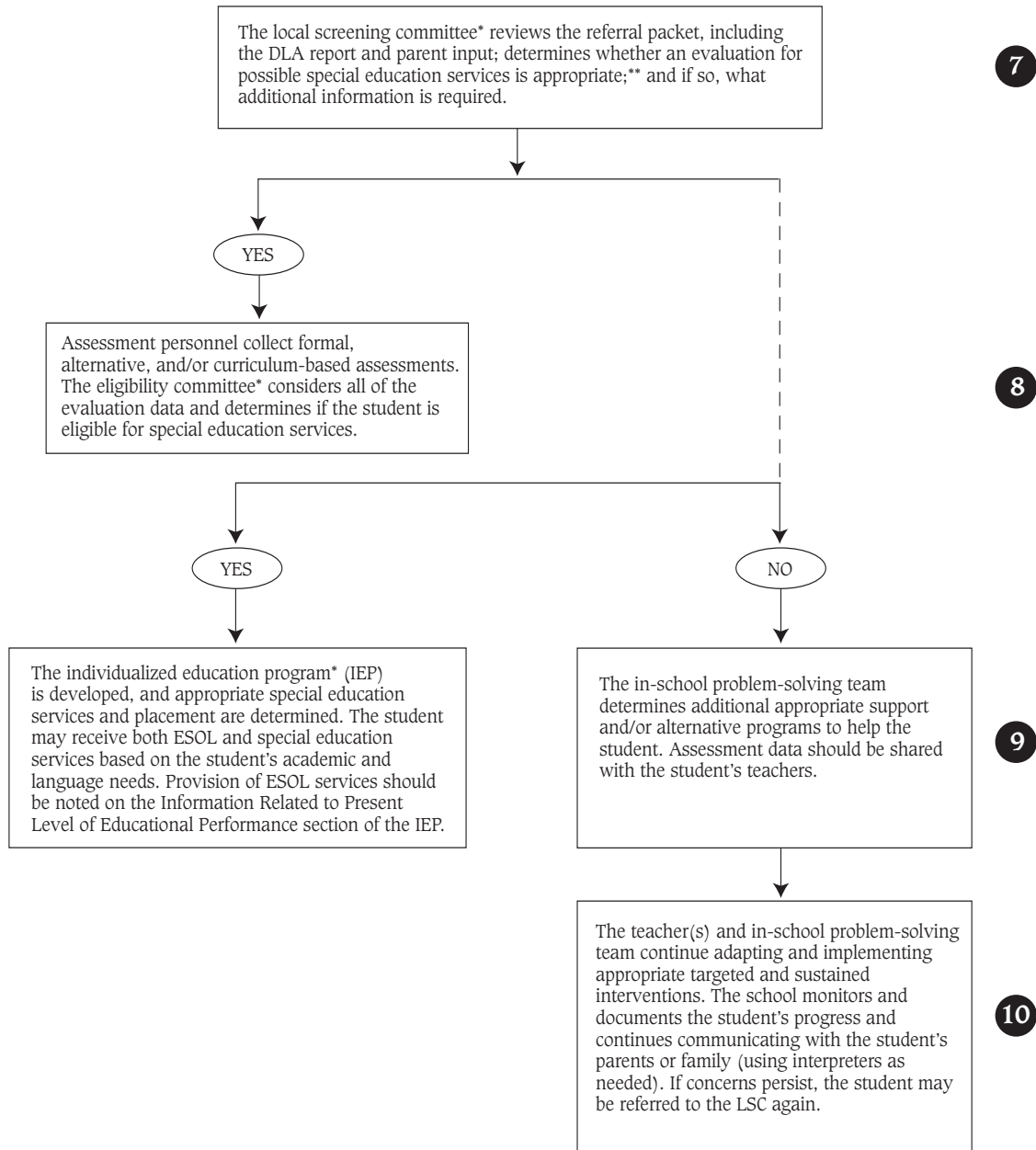




CLiDES FLOWCHART





* The in-school problem-solving team (SST, TAT, child study, etc.), local screening committee, eligibility committee, and IEP team should include the student's ESOL teacher or input from an individual with expertise in the second language acquisition process (FCPS Regulation 2217).

** Due process procedures as outlined in Regulation 2670 apply to the special education process.