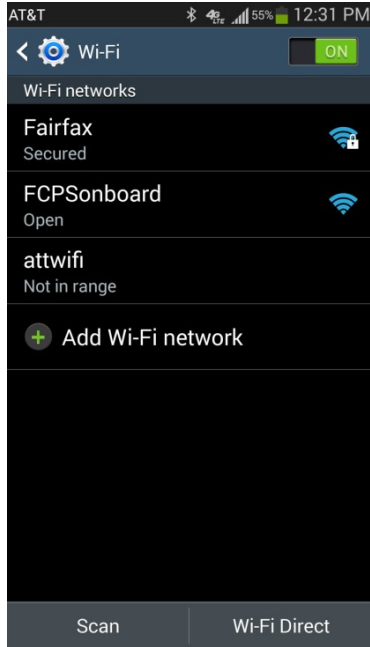


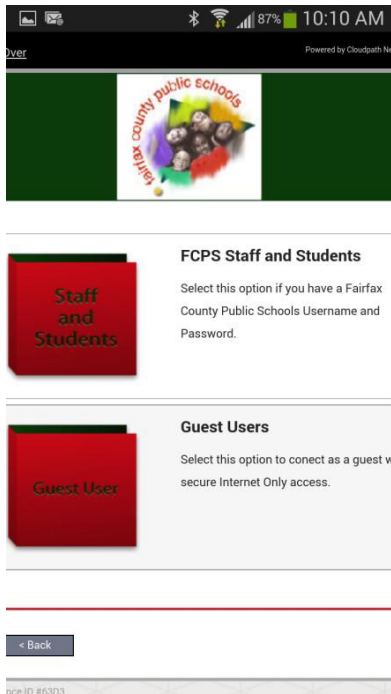
Configuring Android Devices for Fairfax County Public Schools Secure Wireless



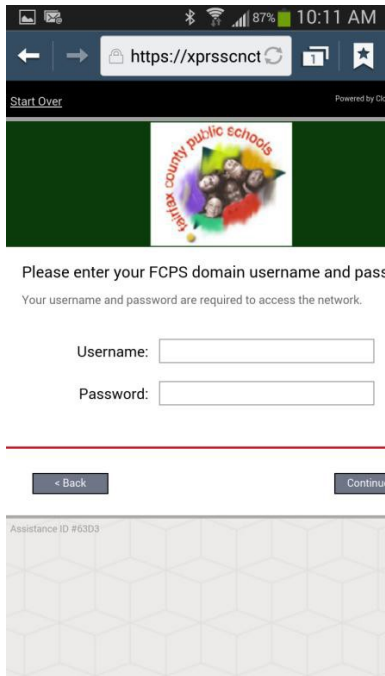
Go to your device settings and select Wi-Fi. Look for a Wi-Fi network named FCPSonboard and select it. Once it has connected open your internet browser manually and try to go to a website. (Sometimes the browser will try to use cached information so it is a good idea to try a site other than your default home page)



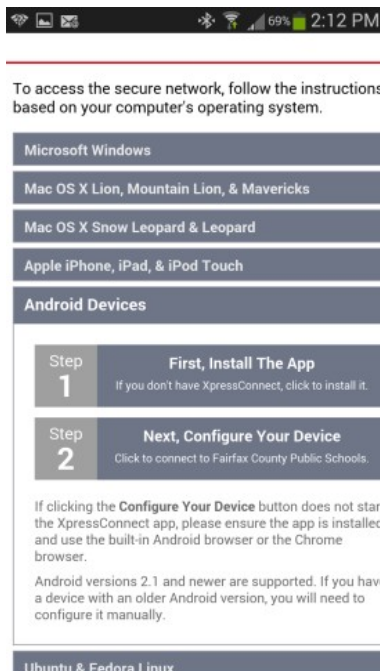
This is the main page for configuration. To continue click the box to agree to the Terms and Conditions and then select the start button.



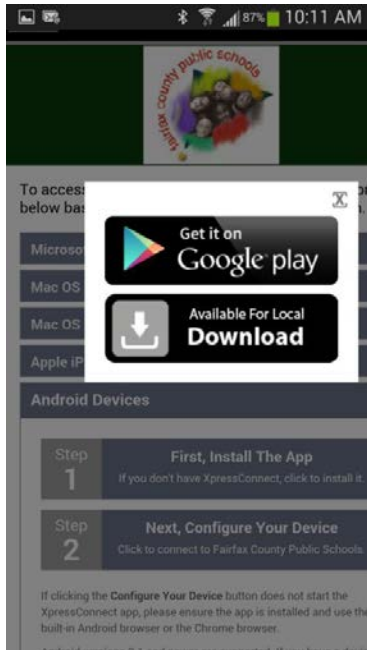
Select FCPS Staff and Students to use your Fairfax County Public Schools username and password for secure access on the wireless network. Select Guest User for Internet only access.



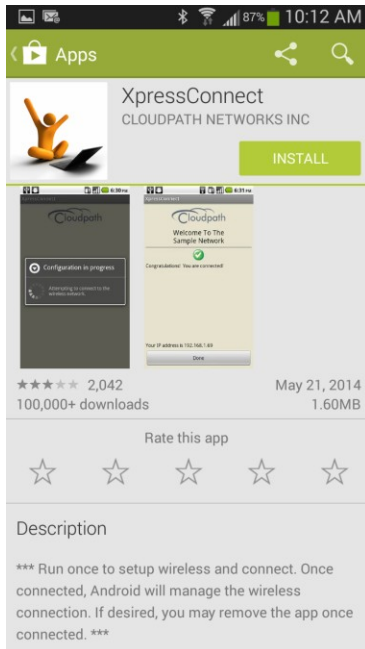
Type in your username (Note: Put your username only, system will populate the domain). Type in your password and select continue Guest Users will not get this prompt.



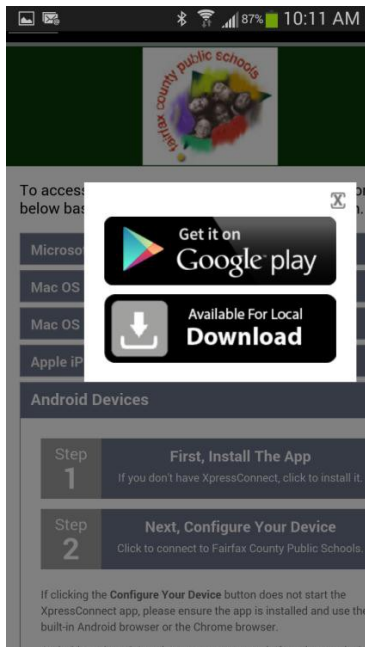
It is a two-step process to configure Android devices. Step 1 is to install the Xpressconnect application. If you do not already have Xpressconnect installed on the device click on Step 1. If you already have Xpressconnect installed on your device you can skip down to the instructions where it states Select Step 2.



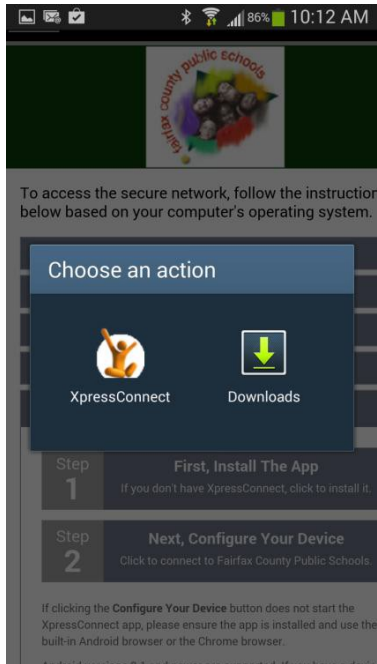
If your device supports Google Play store, you can select it and download the application. You can also directly download the application from the server. (If you have to do a Local Download, you may be required to allow applications from third party sites. The system will direct you to the settings on your device and step you through this process) Select Get it on Google play.



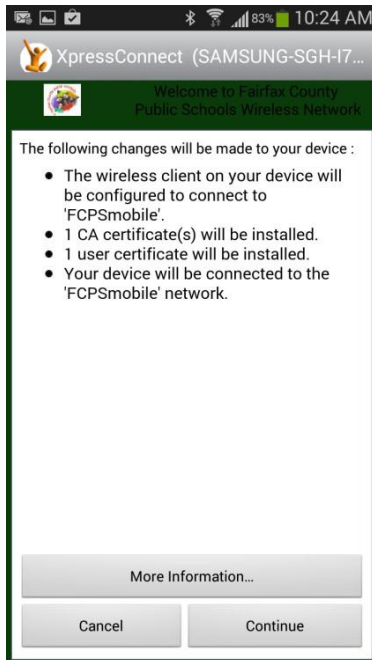
The system will open the app store and bring you to the XpressConnect application. Click install to download and install the application. After it has completed installing select the back button on your Android device to close out the app store and continue configuration.



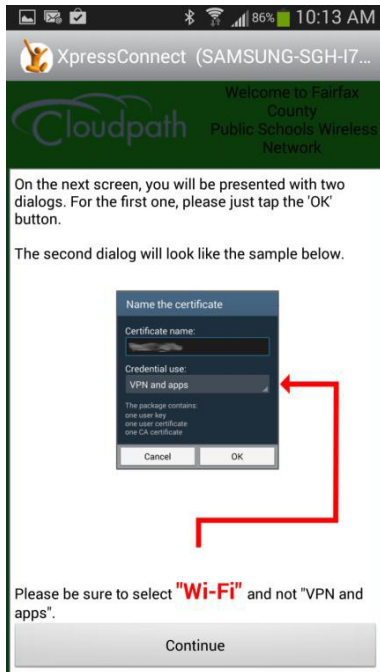
Click on the X in right corner of download option pop-up. Select Step 2 – Configure Your Device



Device might ask you to “Choose an action” Select XpressConnect.

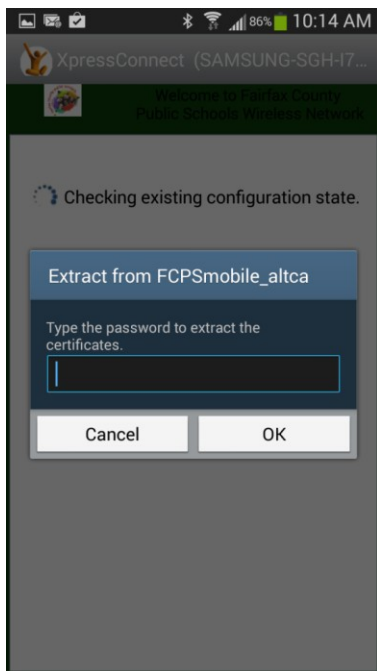


This screen shows what will be configured on the device. **It is very important to follow the instructions on your specific device from this point forward.** There are numerous versions of the Android OS and the system will give instructions specific to the device that is detected. **Carefully read the screens and follow the instructions through rest of the configuration.** Another feature is that newer versions of Android OS require a screen lock code be enabled on the device in order to install certificates. If the device does not have a screen lock code the system will direct them to configure one. (This is not a Cloudpath requirement. Android has updated the certificate store structure to require this) Click Continue to install profile. (Example device is version 4.3 without screen lock code enabled)

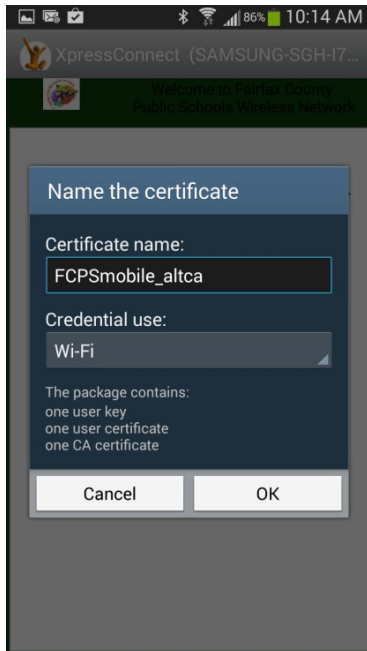


Follow the instructions for this specific device.

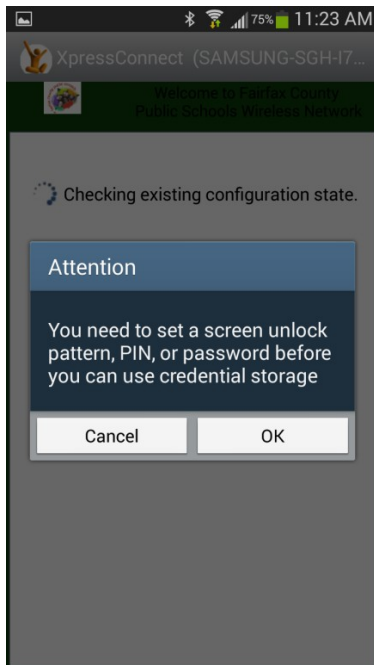
On the first dialog popup click OK. On the second dialog popup select "Wi-Fi" from dropdown. Click continue.



Just Click "OK" as instructions above stated



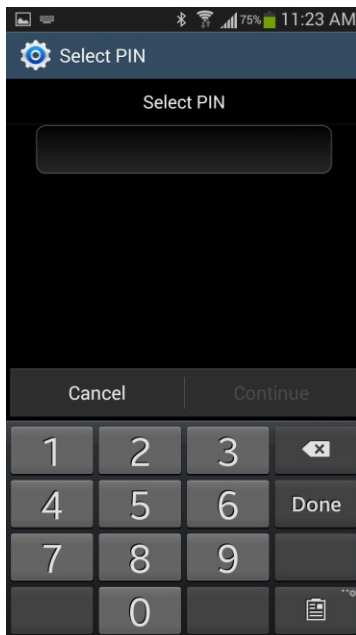
In dropdown for Credential use select “Wi-Fi” as instructions stated above. Click OK.



Since the example device does not have screen lock code, it will require you to use one. Select OK. If there is already a screen code on the device, it will start the configuration/migration process without intervention.



System directs user to location to put in Screen lock code. Select PIN.

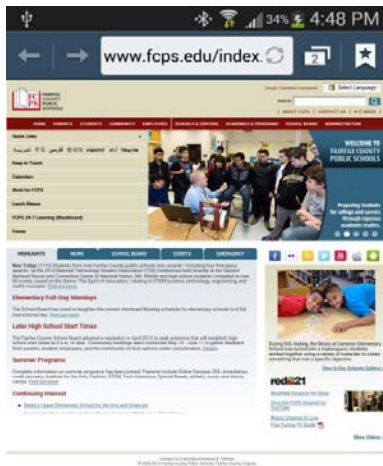


Enter PIN for device. The system will require you to confirm by entering it again.

It is very important to remember the PIN entered. The system will require the user to enter this to access device from now on.



Your device will now install the configuration and automatically move you to the network that was configured.



The device will open a new tab and redirect you to www.fcps.edu when the system has successfully configured and migrated the device to the Fairfax wireless network.