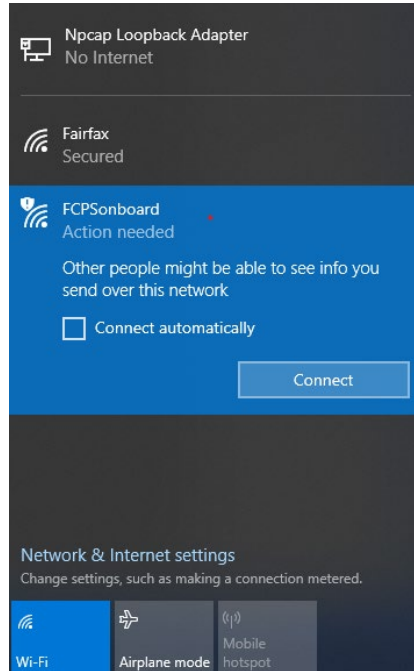


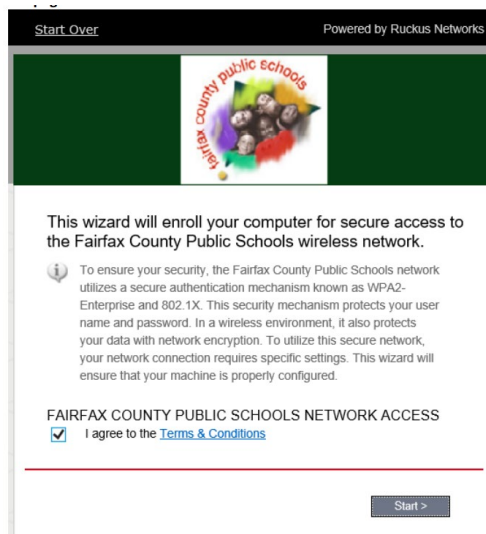
Windows 10 onboard WIFI procedure

1. Click on the Wi-Fi icon to the left of the time/date. Select the FCPSonboard Wi-Fi. Check the box that says connect automatically and hit Connect.

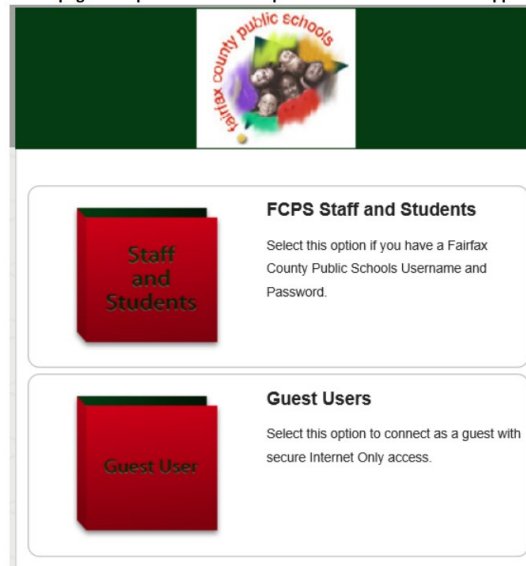


2. Browser will open and display the Cloudpath wizard. Check the box that says “I agree to the terms and conditions” and then click the Start button on the bottom right of the page.

(If the browser does not open and redirect to Cloudpath, open your browser and enter 2.2.2.2 in the URL bar to force the device to redirect to the Cloudpath Wizard)



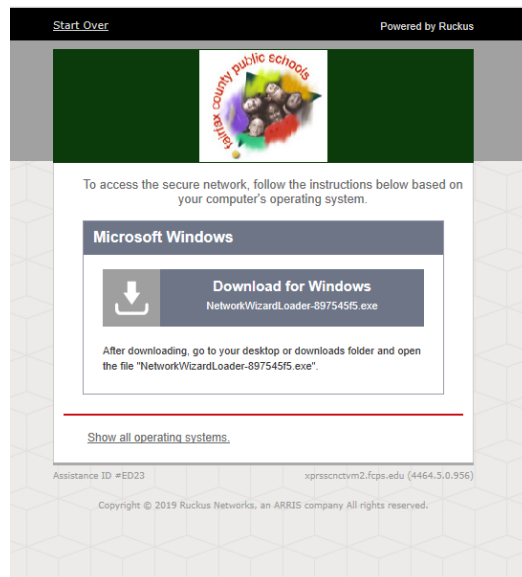
3. A new page will open that has two options -- choose the box that applies.



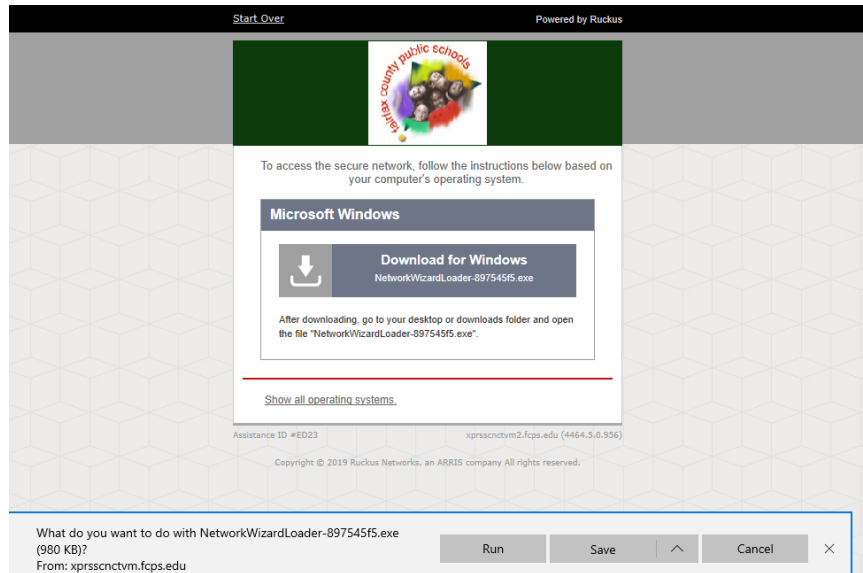
4. If you selected FCPS Staff and Students, a new page will open up where you will enter your FCPS credentials. Enter your Credentials and Click Continue.



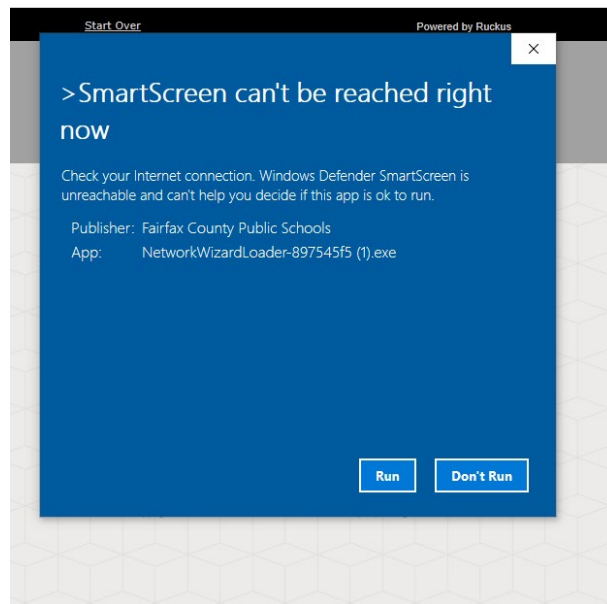
5. You should see the following screen. Click on "Download for Windows."



6. Depending on the Browser used the device will either download the file or ask you if you want to save or run the file. You can save the file and then navigate to where it is saved and run it, or if prompt like below run the file directly.

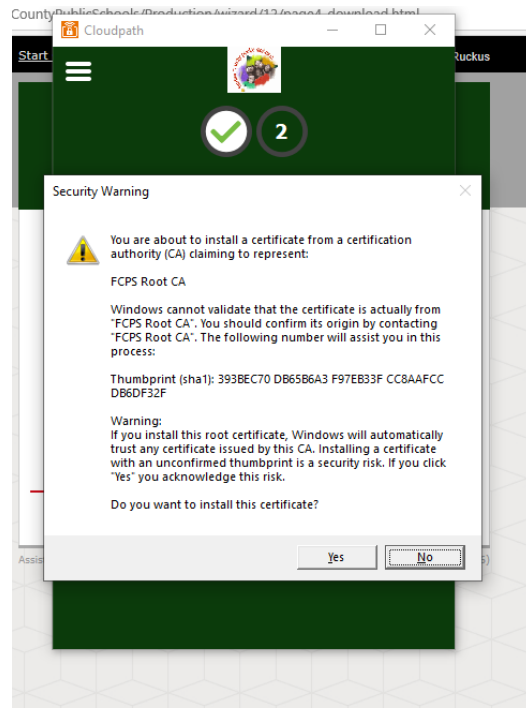


7. It will give you a message about Smartscreen, click Run if this is prompted.

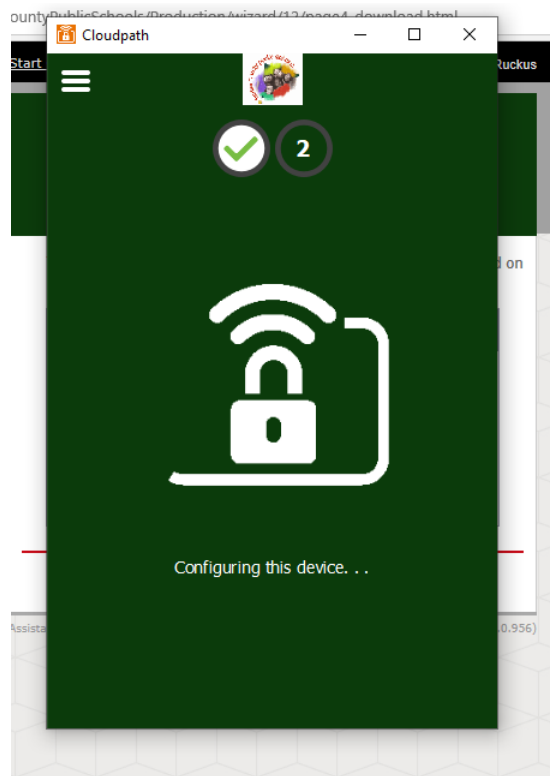


- Installation will start. If the device has never been onboarded before it will prompt you to install the FCPS Root CA for authentication. Click yes

(Note you will only get this prompt if the device has never been onboarded, and the Root Cert is not already on the device)



- The application will launch and start configuring the device for the network



10. Upon successful configuration the device will be migrated to the "Fairfax" wireless network. The app will show that the configuration has been completed and the browser will automatically redirect to the FCPS home page. You can close the application and enrollment is complete.

